

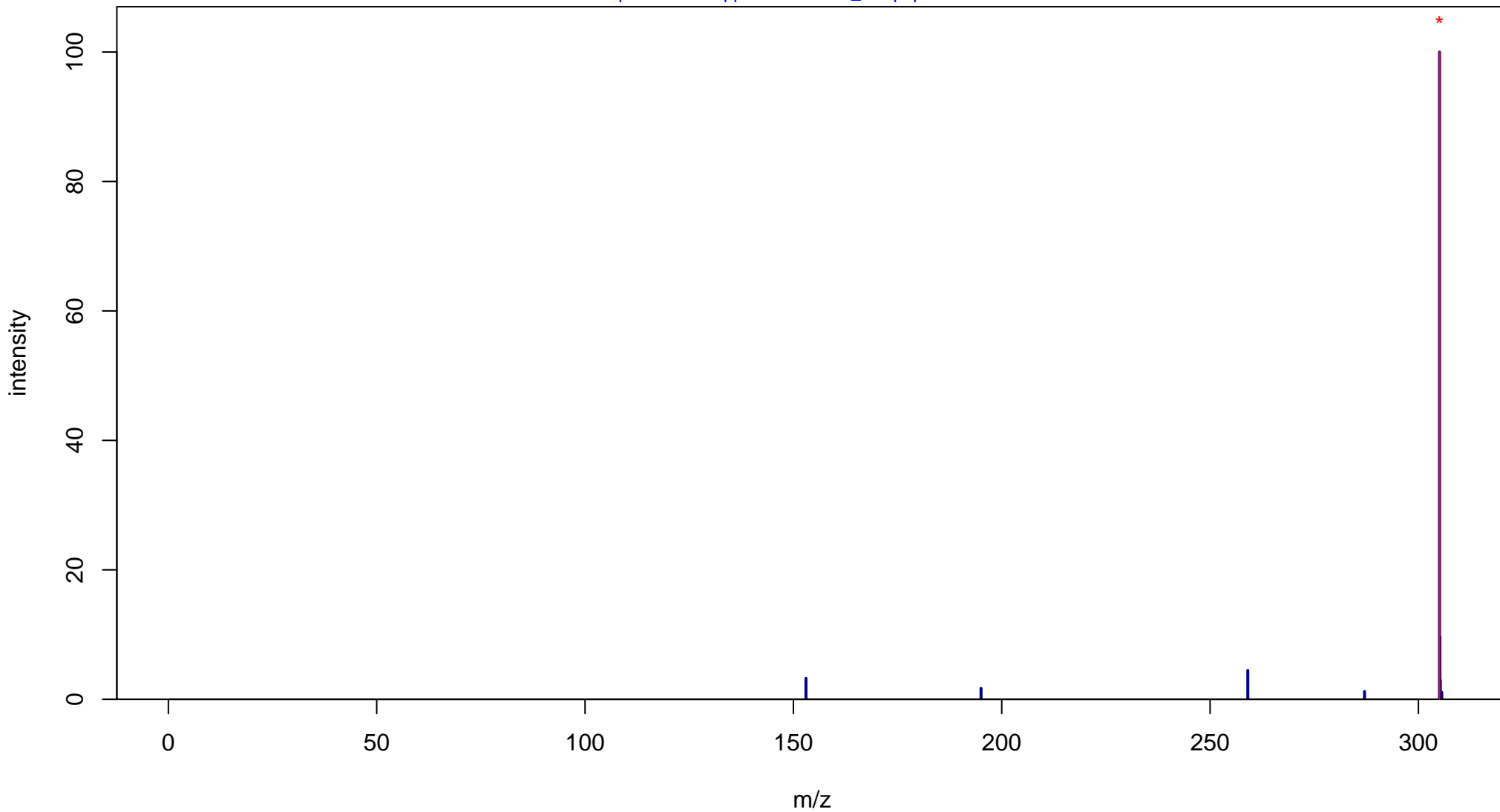
Dihydroquercetin

Mass: 304.0583 Formula: C₁₅H₁₂O₇

mode: + collisionE: 0V

METLIN ID: 3434 SIGMA Prod: 78666

http://metlin.scripps.edu/metabo_info.php?molid=3434



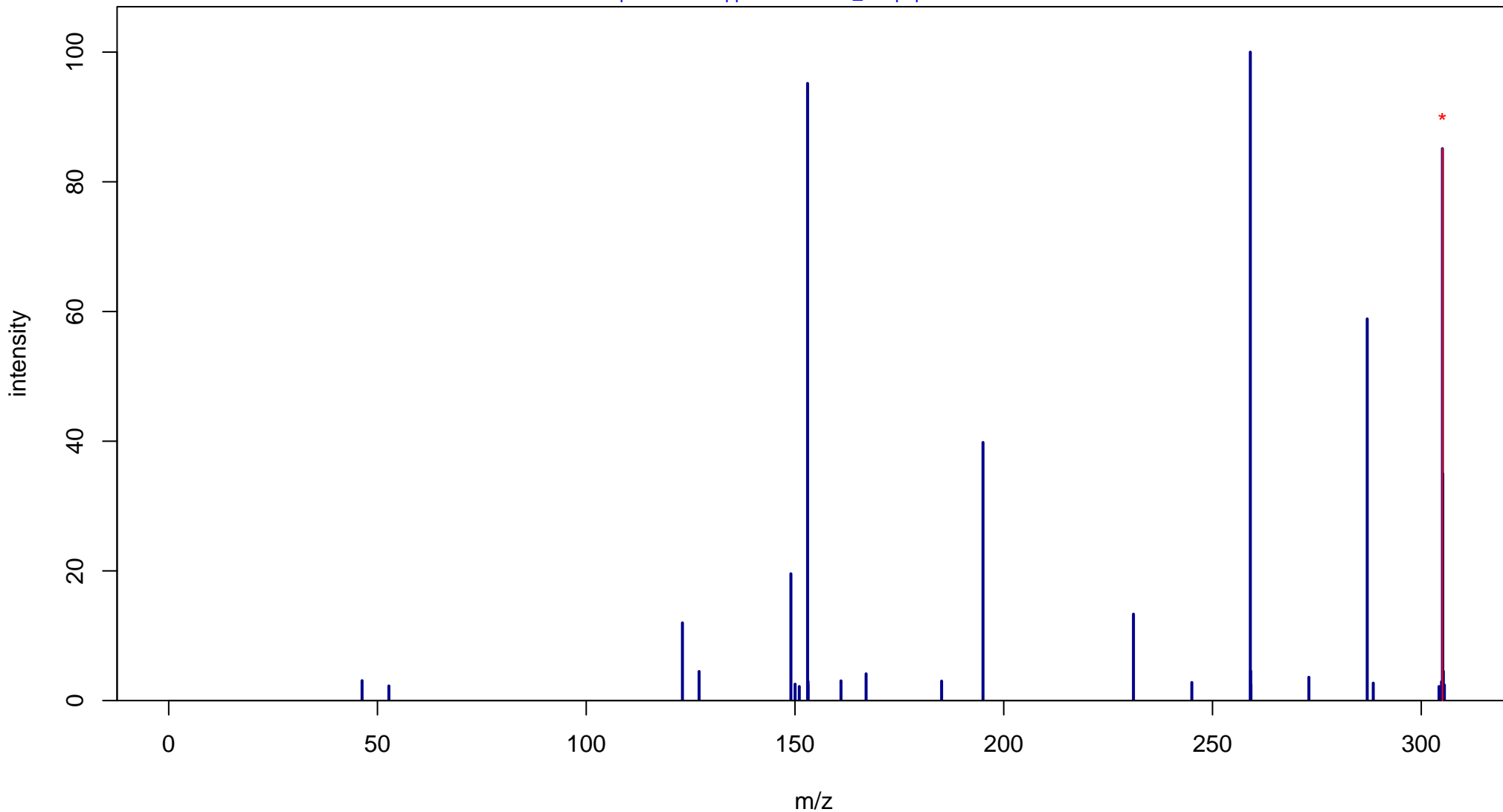
Dihydroquercetin

Mass: 304.0583 Formula: C₁₅H₁₂O₇

mode: + collisionE: 10V

METLIN ID: 3434 SIGMA Prod: 78666

http://metlin.scripps.edu/metabo_info.php?molid=3434



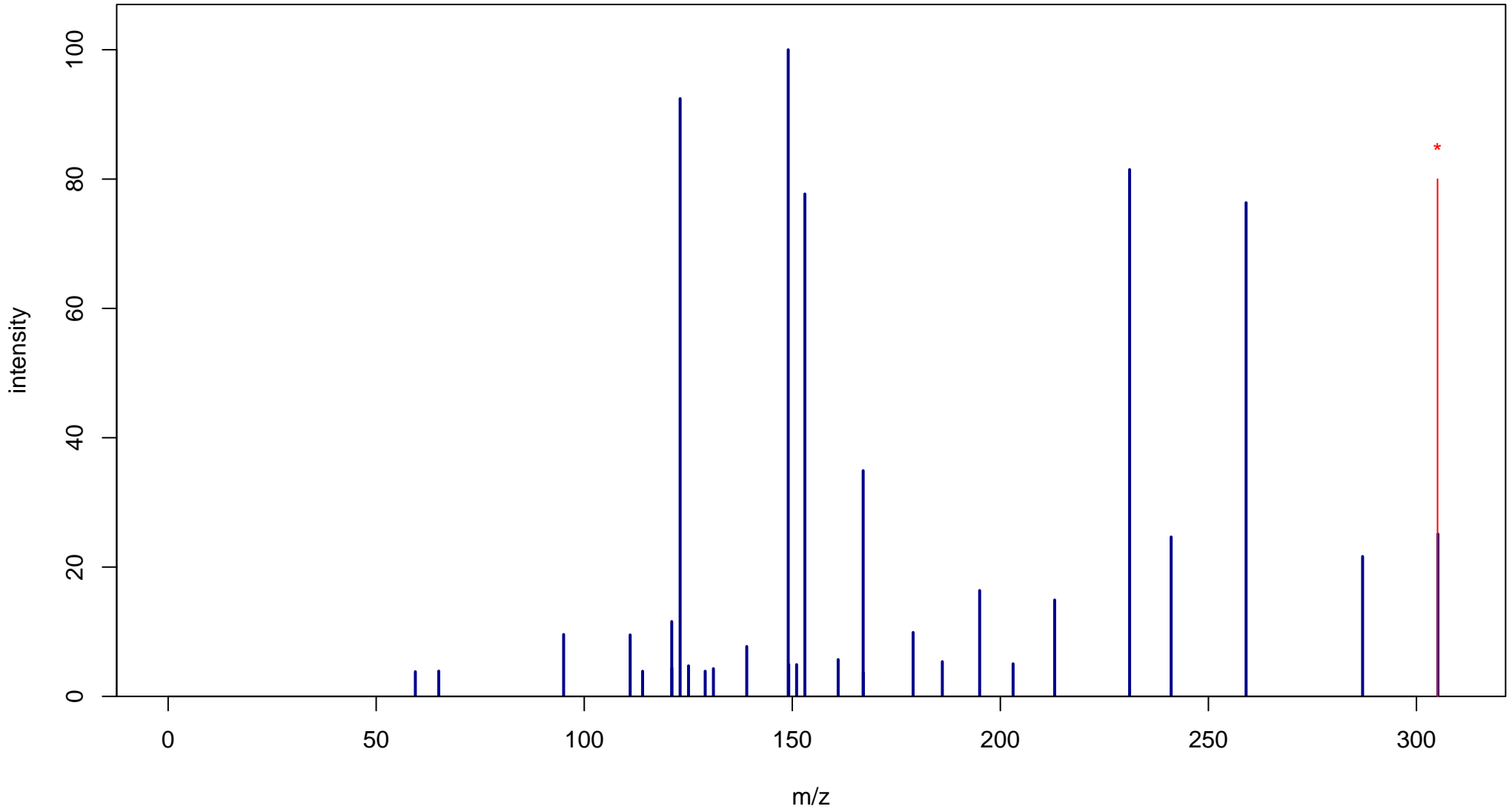
Dihydroquercetin

Mass: 304.0583 Formula: C₁₅H₁₂O₇

mode: + collisionE: 20V

METLIN ID: 3434 SIGMA Prod: 78666

http://metlin.scripps.edu/metabo_info.php?molid=3434



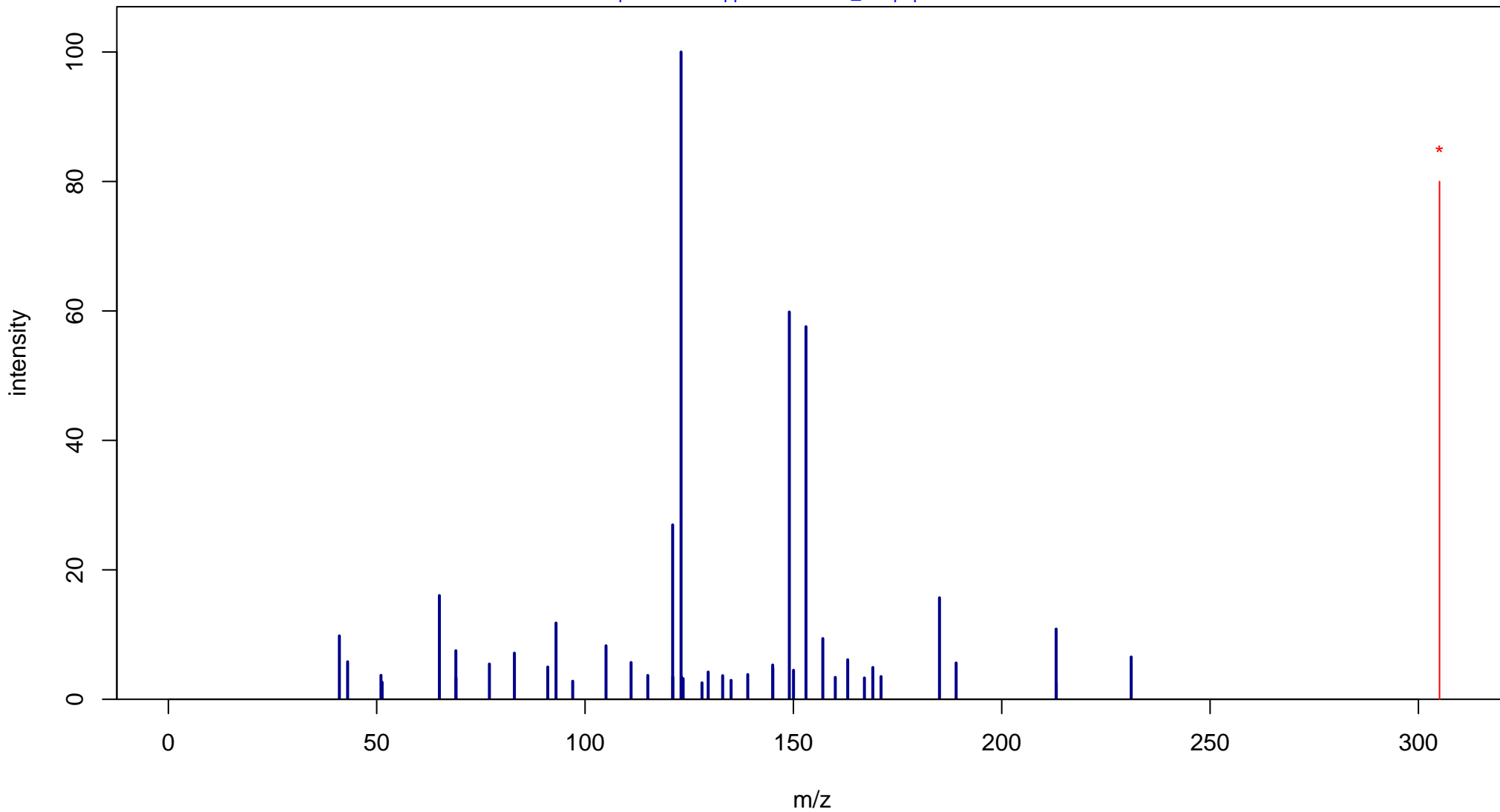
Dihydroquercetin

Mass: 304.0583 Formula: C₁₅H₁₂O₇

mode: + collisionE: 40V

METLIN ID: 3434 SIGMA Prod: 78666

http://metlin.scripps.edu/metabo_info.php?molid=3434



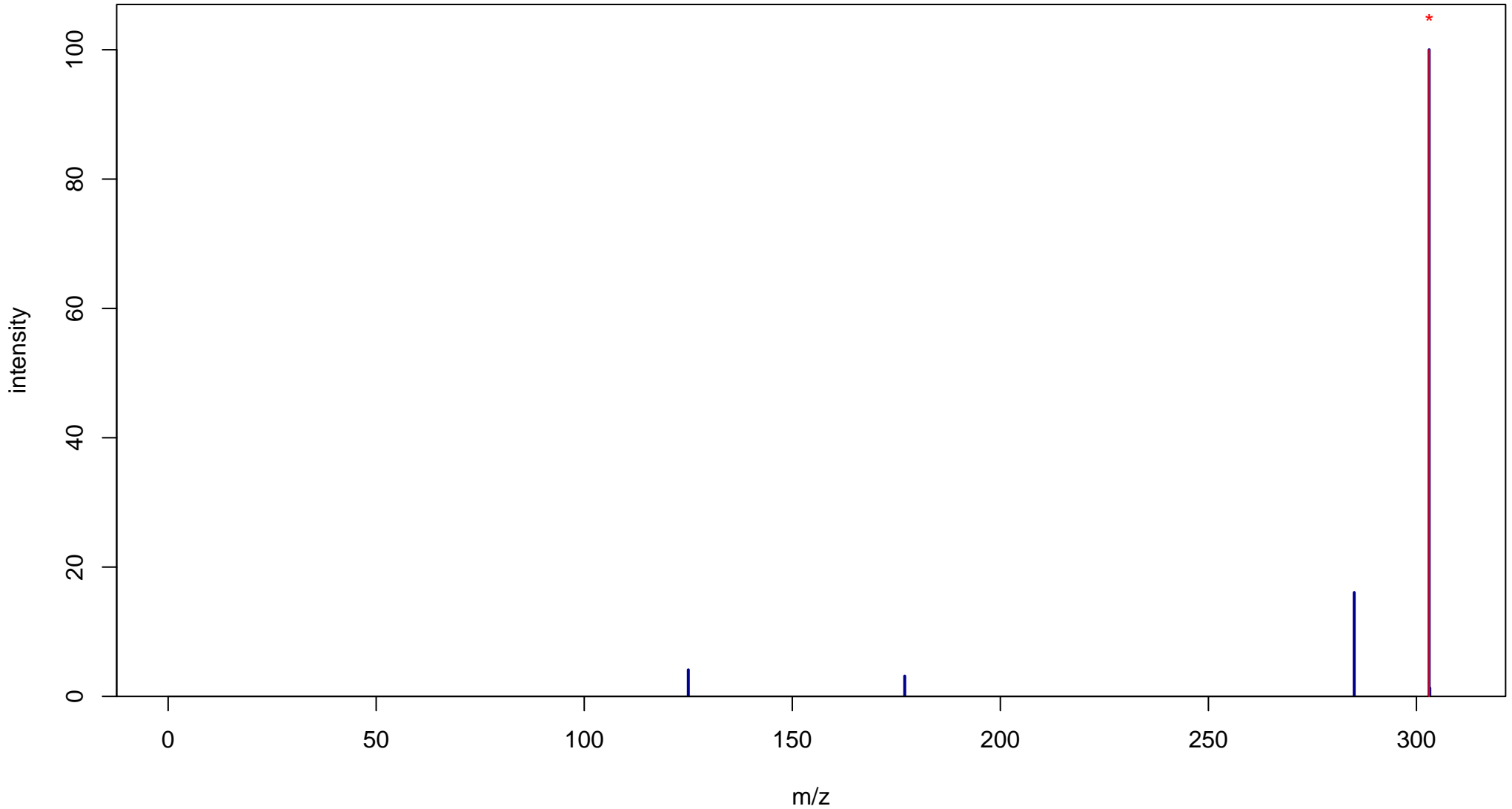
Dihydroquercetin

Mass: 304.0583 Formula: C₁₅H₁₂O₇

mode: - collisionE: 0V

METLIN ID: 3434 SIGMA Prod: 78666

http://metlin.scripps.edu/metabo_info.php?molid=3434



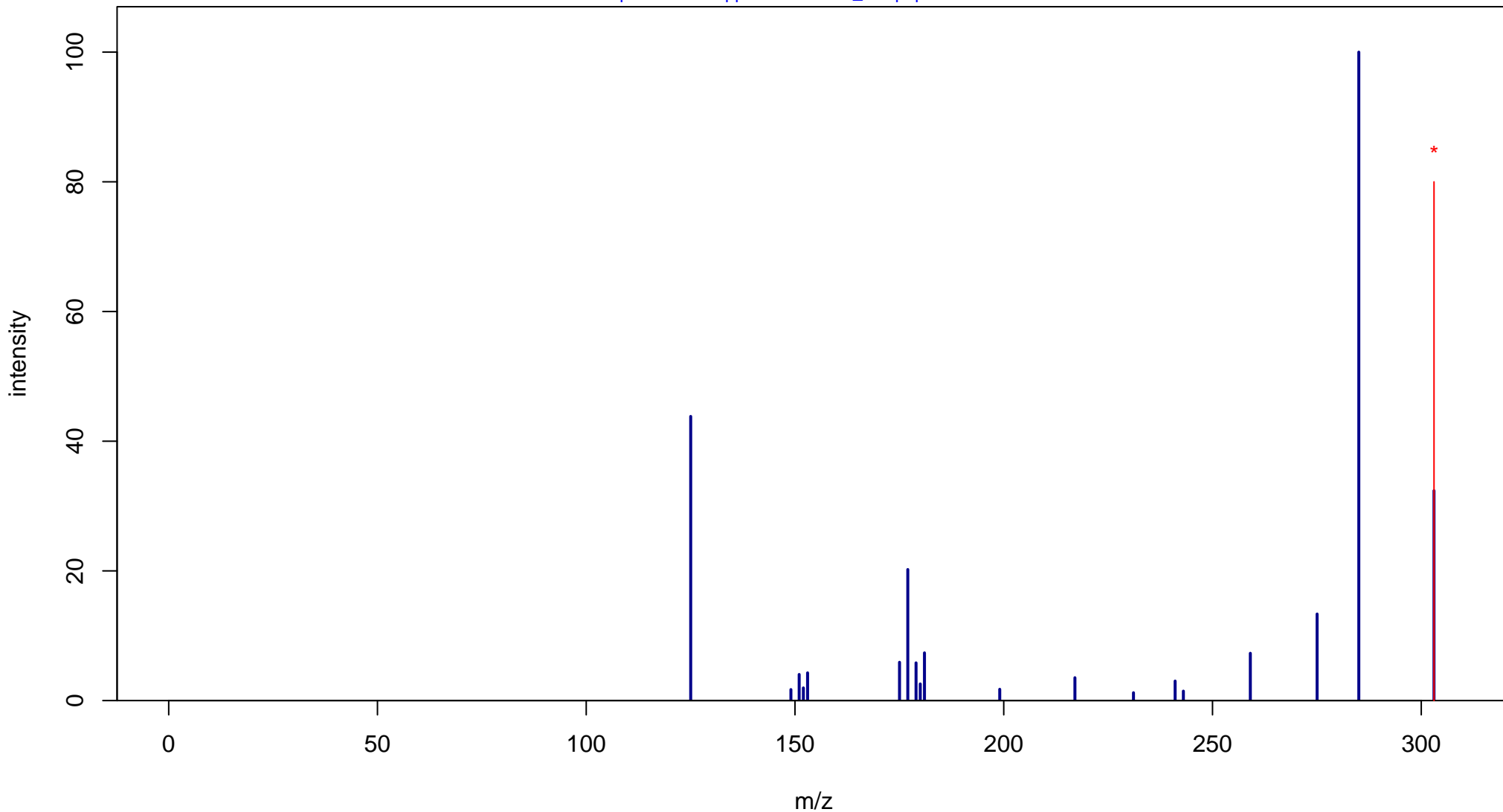
Dihydroquercetin

Mass: 304.0583 Formula: C₁₅H₁₂O₇

mode: - collisionE: 10V

METLIN ID: 3434 SIGMA Prod: 78666

http://metlin.scripps.edu/metabo_info.php?molid=3434



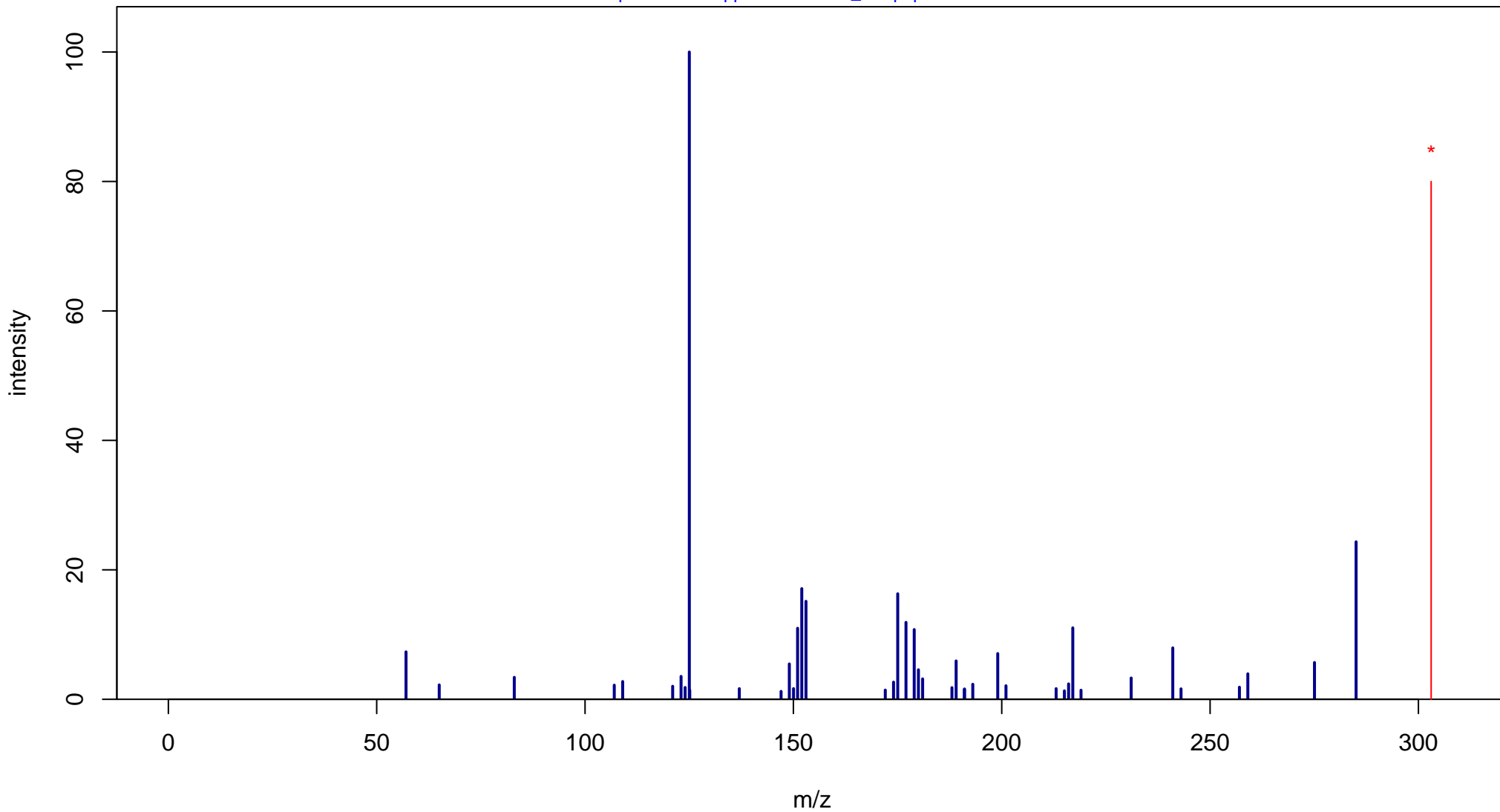
Dihydroquercetin

Mass: 304.0583 Formula: C₁₅H₁₂O₇

mode: - collisionE: 20V

METLIN ID: 3434 SIGMA Prod: 78666

http://metlin.scripps.edu/metabo_info.php?molid=3434



Dihydroquercetin

Mass: 304.0583 Formula: C₁₅H₁₂O₇

mode: - collisionE: 40V

METLIN ID: 3434 SIGMA Prod: 78666

http://metlin.scripps.edu/metabo_info.php?molid=3434

