

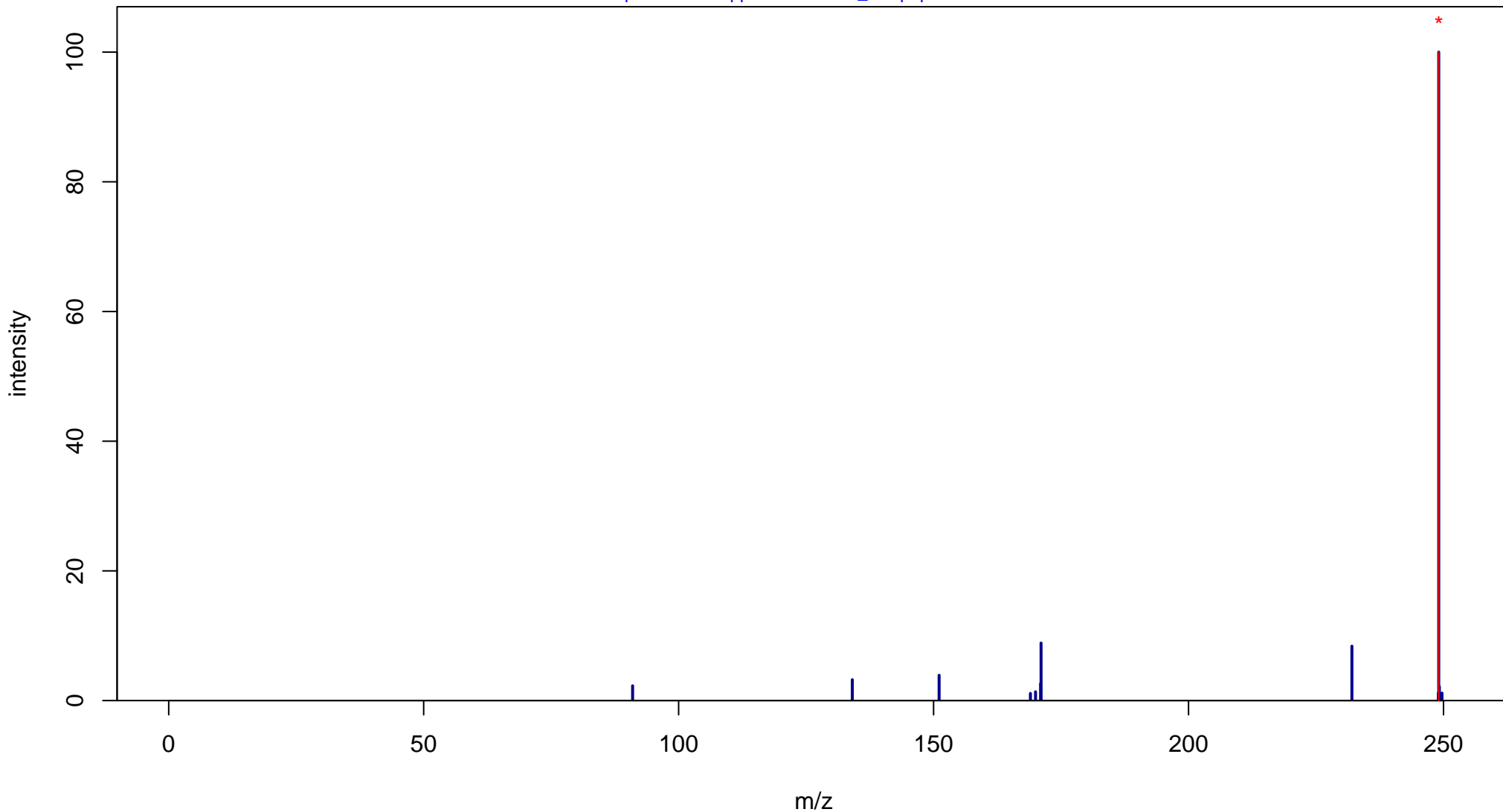
# Pyridoxamine-5'-Phosphate

Mass: 248.0562 Formula: C<sub>8</sub>H<sub>13</sub>N<sub>2</sub>O<sub>5</sub>P

mode: + collisionE: 0V

METLIN ID: 236 SIGMA Prod: 82890

[http://metlin.scripps.edu/metabo\\_info.php?molid=236](http://metlin.scripps.edu/metabo_info.php?molid=236)



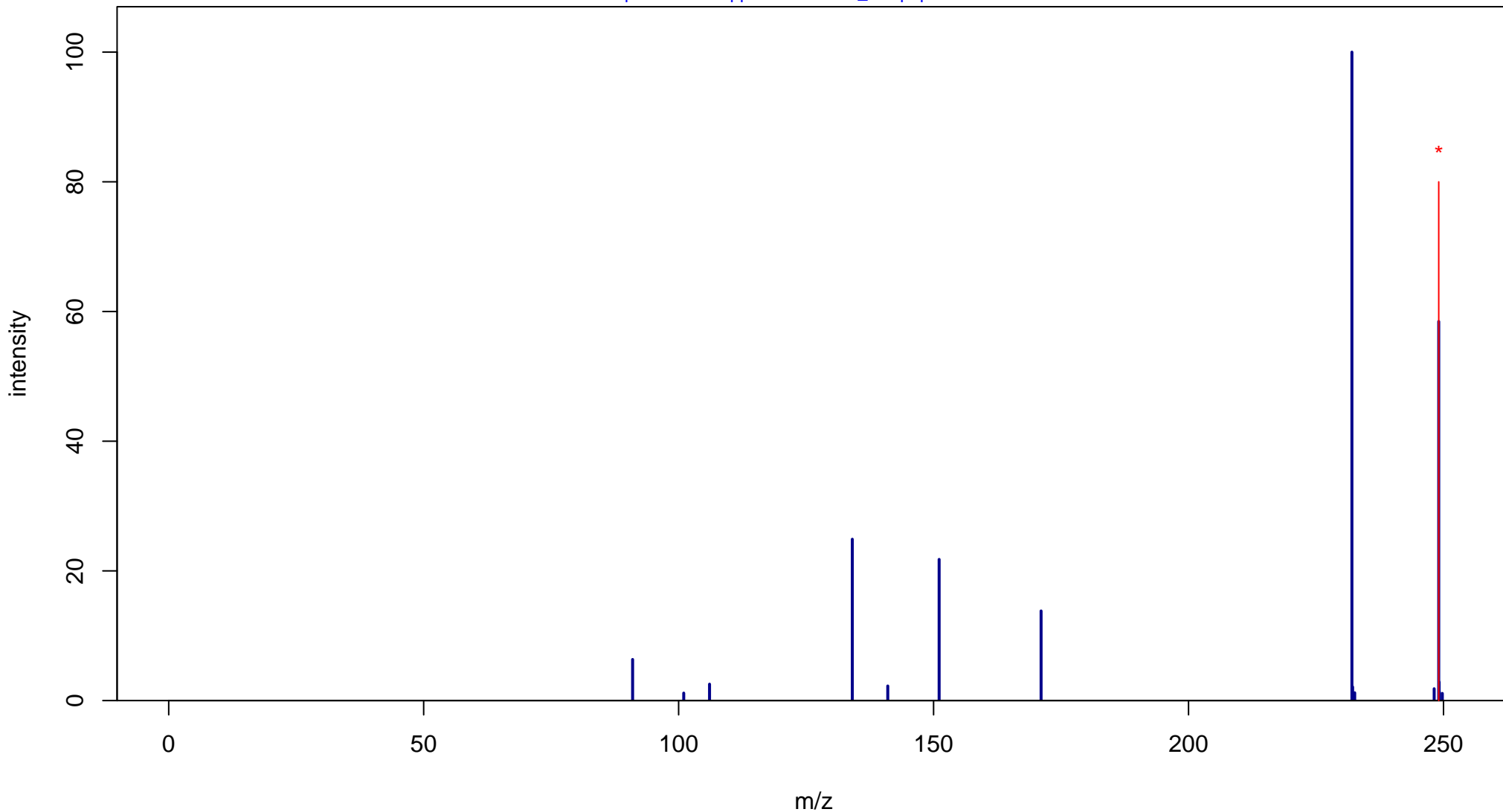
# Pyridoxamine-5'-Phosphate

Mass: 248.0562 Formula: C<sub>8</sub>H<sub>13</sub>N<sub>2</sub>O<sub>5</sub>P

mode: + collisionE: 10V

METLIN ID: 236 SIGMA Prod: 82890

[http://metlin.scripps.edu/metabo\\_info.php?molid=236](http://metlin.scripps.edu/metabo_info.php?molid=236)



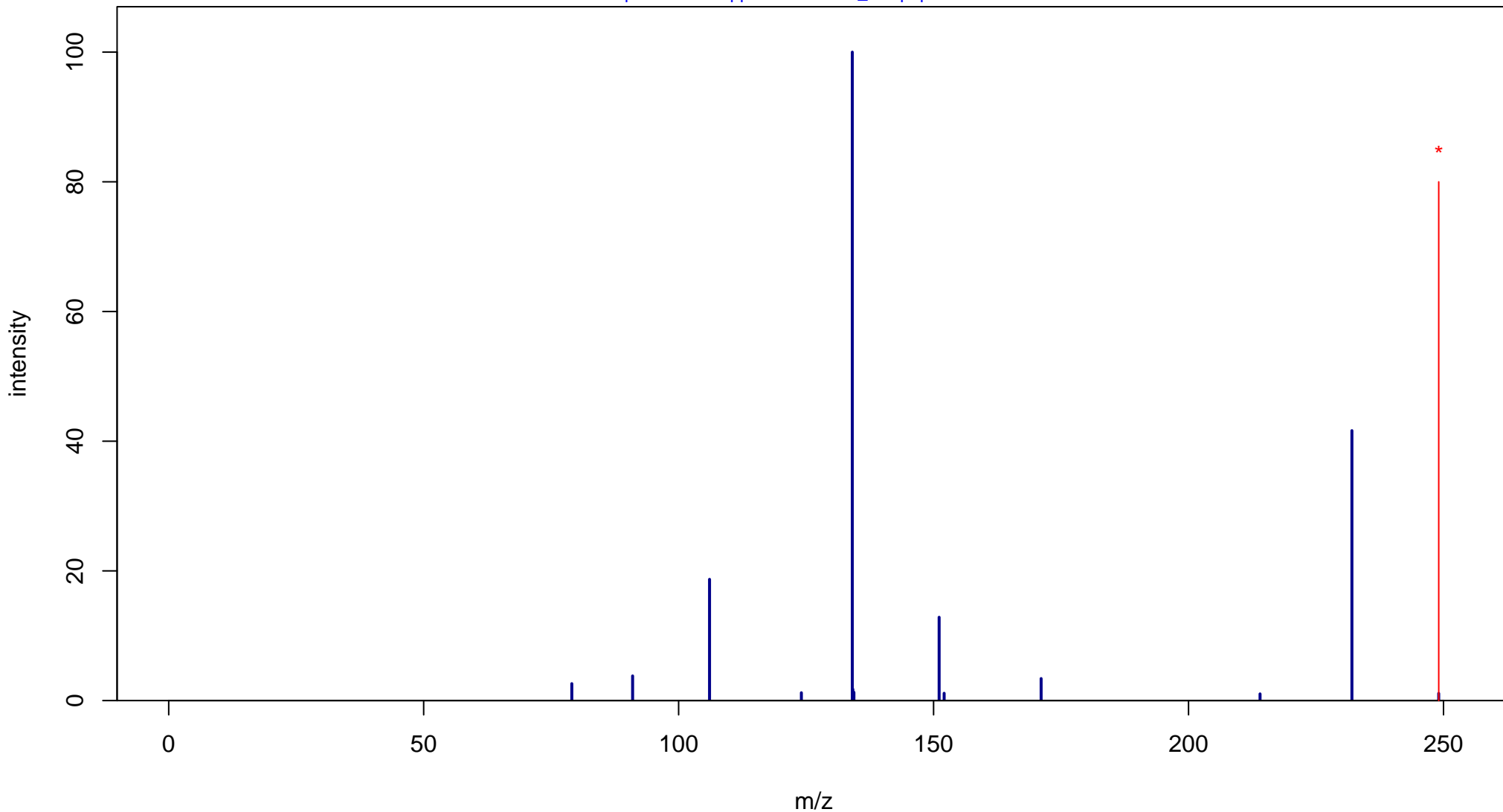
# Pyridoxamine-5'-Phosphate

Mass: 248.0562 Formula: C<sub>8</sub>H<sub>13</sub>N<sub>2</sub>O<sub>5</sub>P

mode: + collisionE: 20V

METLIN ID: 236 SIGMA Prod: 82890

[http://metlin.scripps.edu/metabo\\_info.php?molid=236](http://metlin.scripps.edu/metabo_info.php?molid=236)



# Pyridoxamine-5'-Phosphate

Mass: 248.0562 Formula: C<sub>8</sub>H<sub>13</sub>N<sub>2</sub>O<sub>5</sub>P

mode: + collisionE: 40V

METLIN ID: 236 SIGMA Prod: 82890

[http://metlin.scripps.edu/metabo\\_info.php?molid=236](http://metlin.scripps.edu/metabo_info.php?molid=236)

