

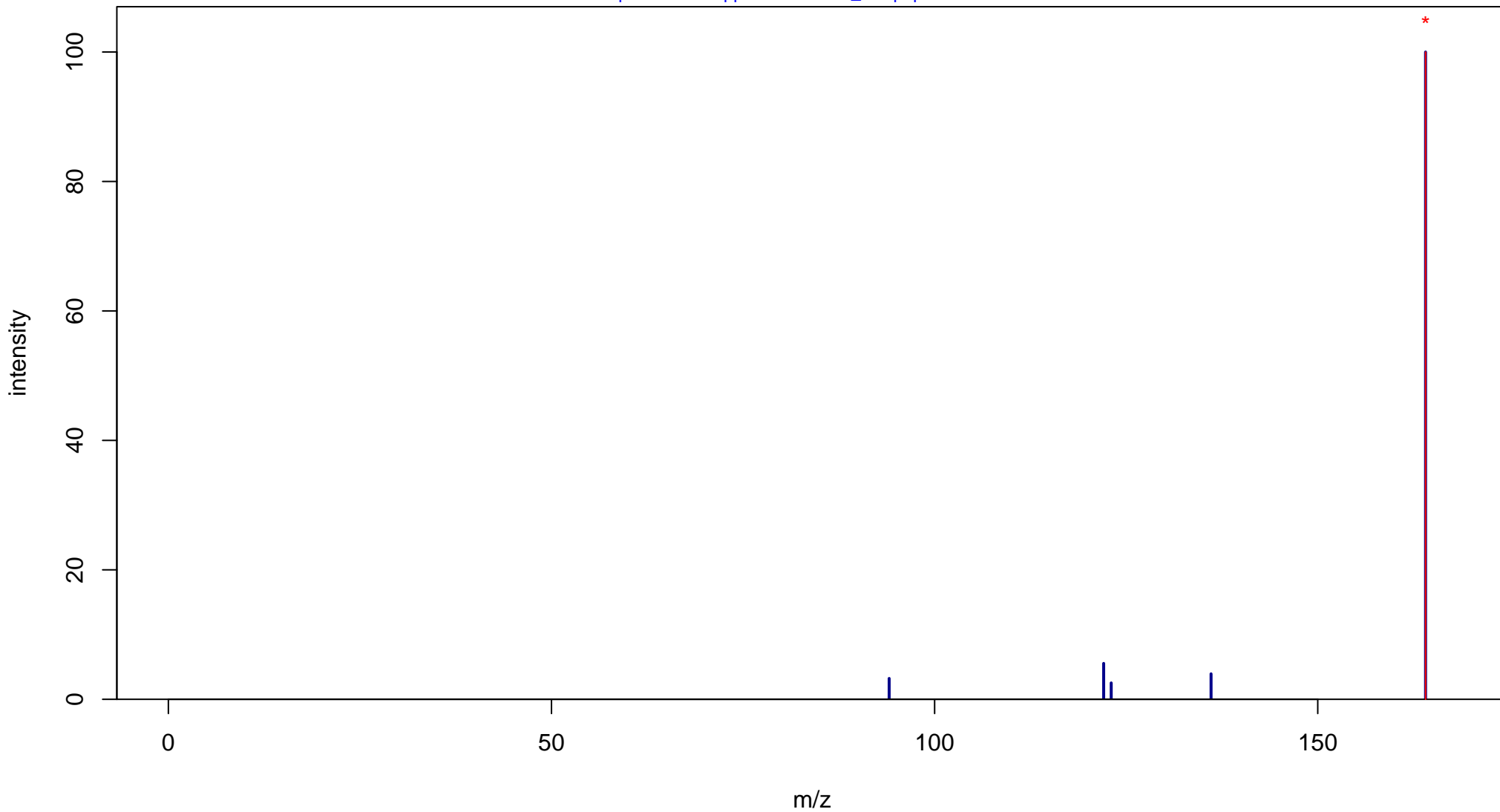
4-Acetamidobenzaldehyde

Mass: 163.0633 Formula: C₉H₉NO₂

mode: + collisionE: 0V

METLIN ID: 2829 SIGMA Prod: A1800

http://metlin.scripps.edu/metabo_info.php?molid=2829



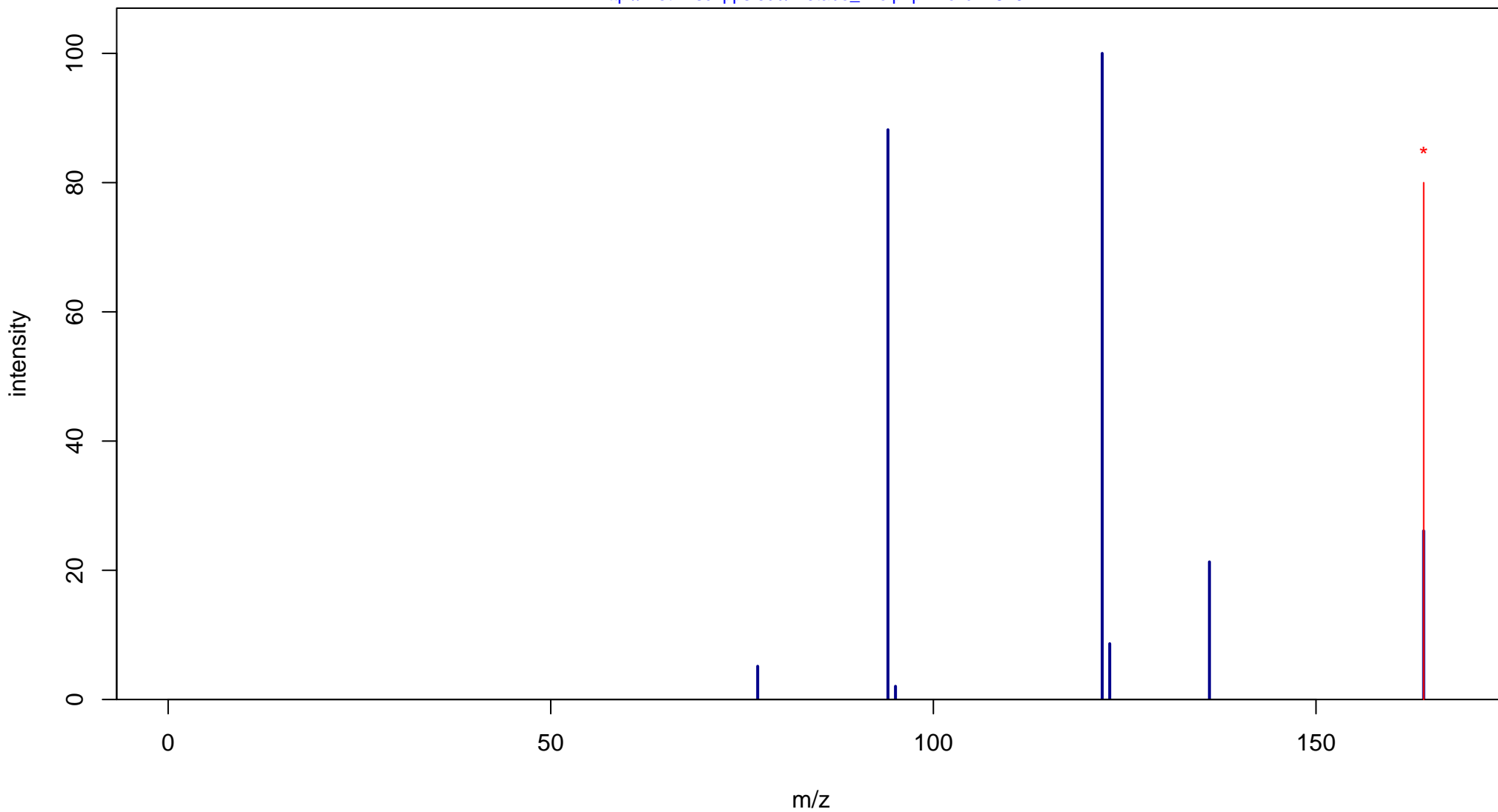
4-Acetamidobenzaldehyde

Mass: 163.0633 Formula: C₉H₉NO₂

mode: + collisionE: 10V

METLIN ID: 2829 SIGMA Prod: A1800

http://metlin.scripps.edu/metabo_info.php?molid=2829



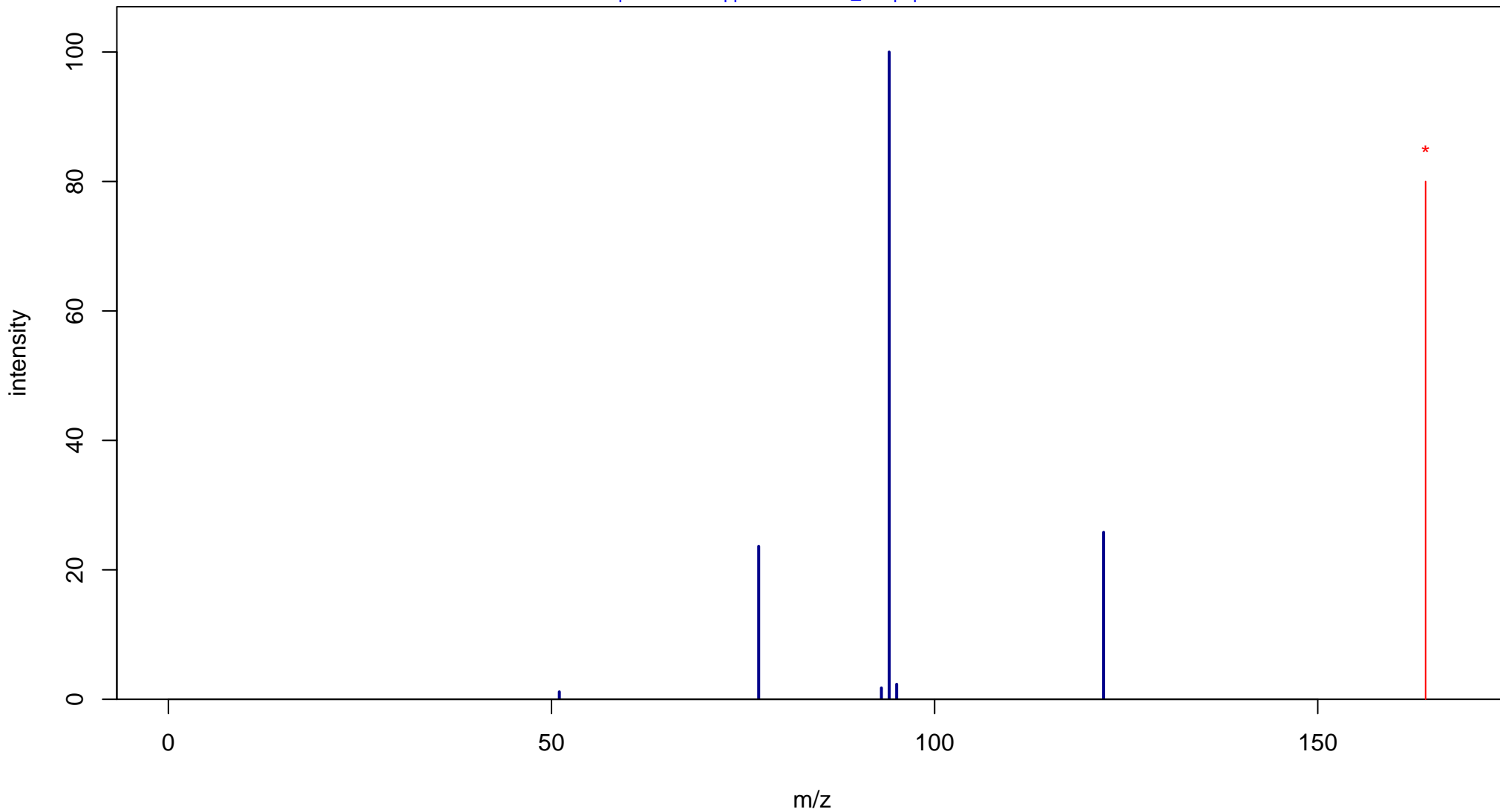
4-Acetamidobenzaldehyde

Mass: 163.0633 Formula: C₉H₉NO₂

mode: + collisionE: 20V

METLIN ID: 2829 SIGMA Prod: A1800

http://metlin.scripps.edu/metabo_info.php?molid=2829



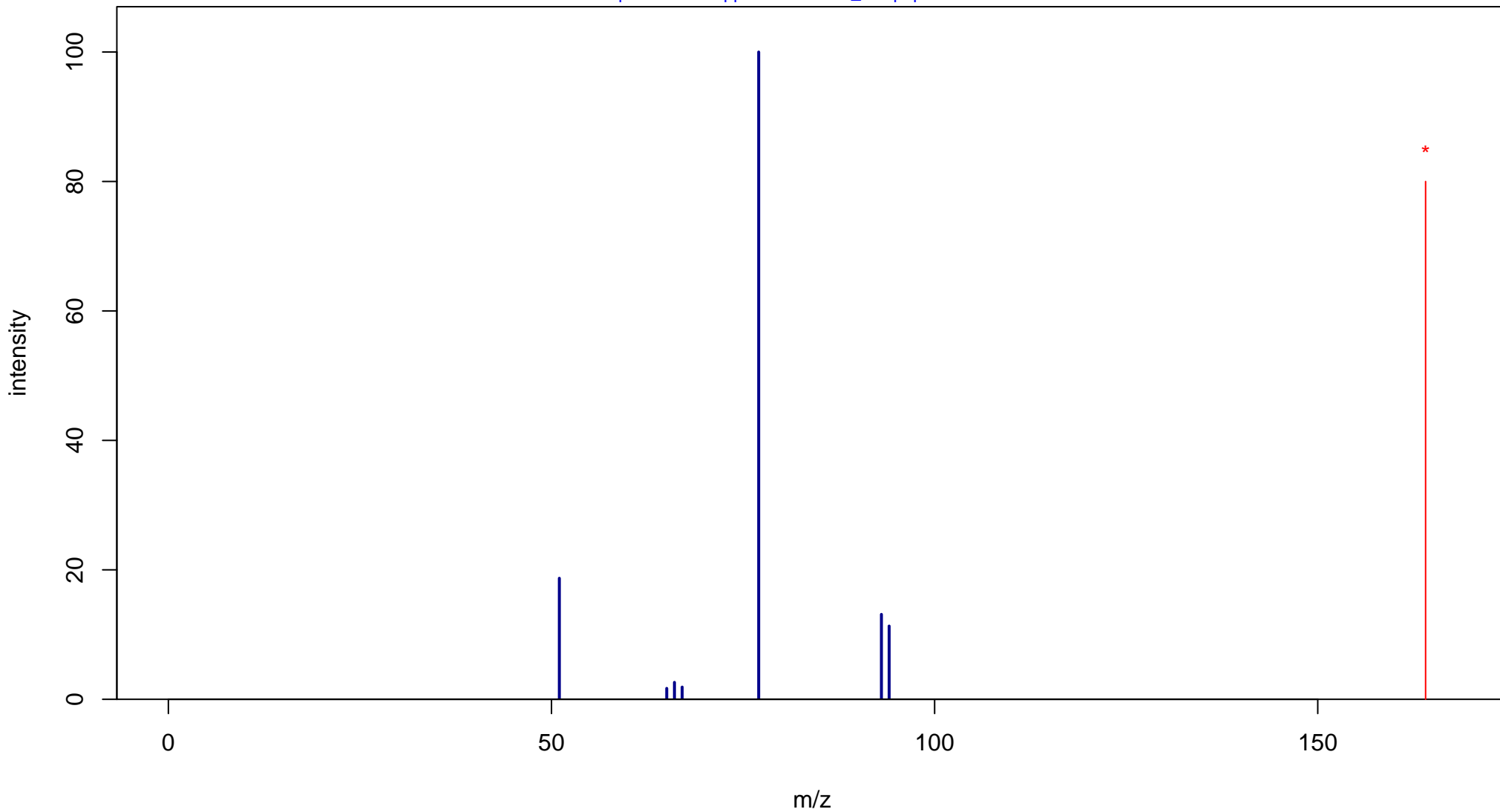
4-Acetamidobenzaldehyde

Mass: 163.0633 Formula: C₉H₉NO₂

mode: + collisionE: 40V

METLIN ID: 2829 SIGMA Prod: A1800

http://metlin.scripps.edu/metabo_info.php?molid=2829



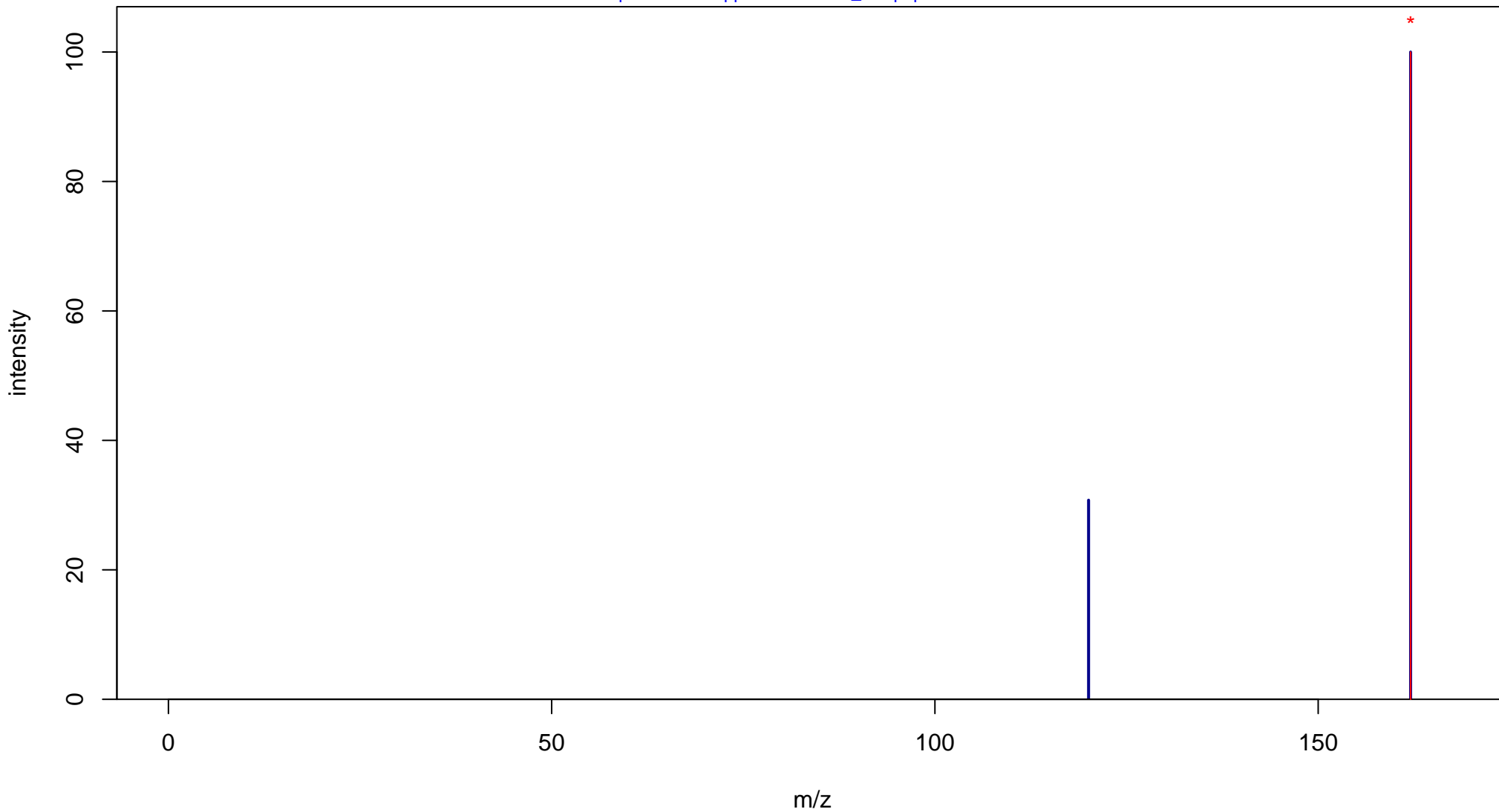
4-Acetamidobenzaldehyde

Mass: 163.0633 Formula: C₉H₉NO₂

mode: - collisionE: 0V

METLIN ID: 2829 SIGMA Prod: A1800

http://metlin.scripps.edu/metabo_info.php?molid=2829



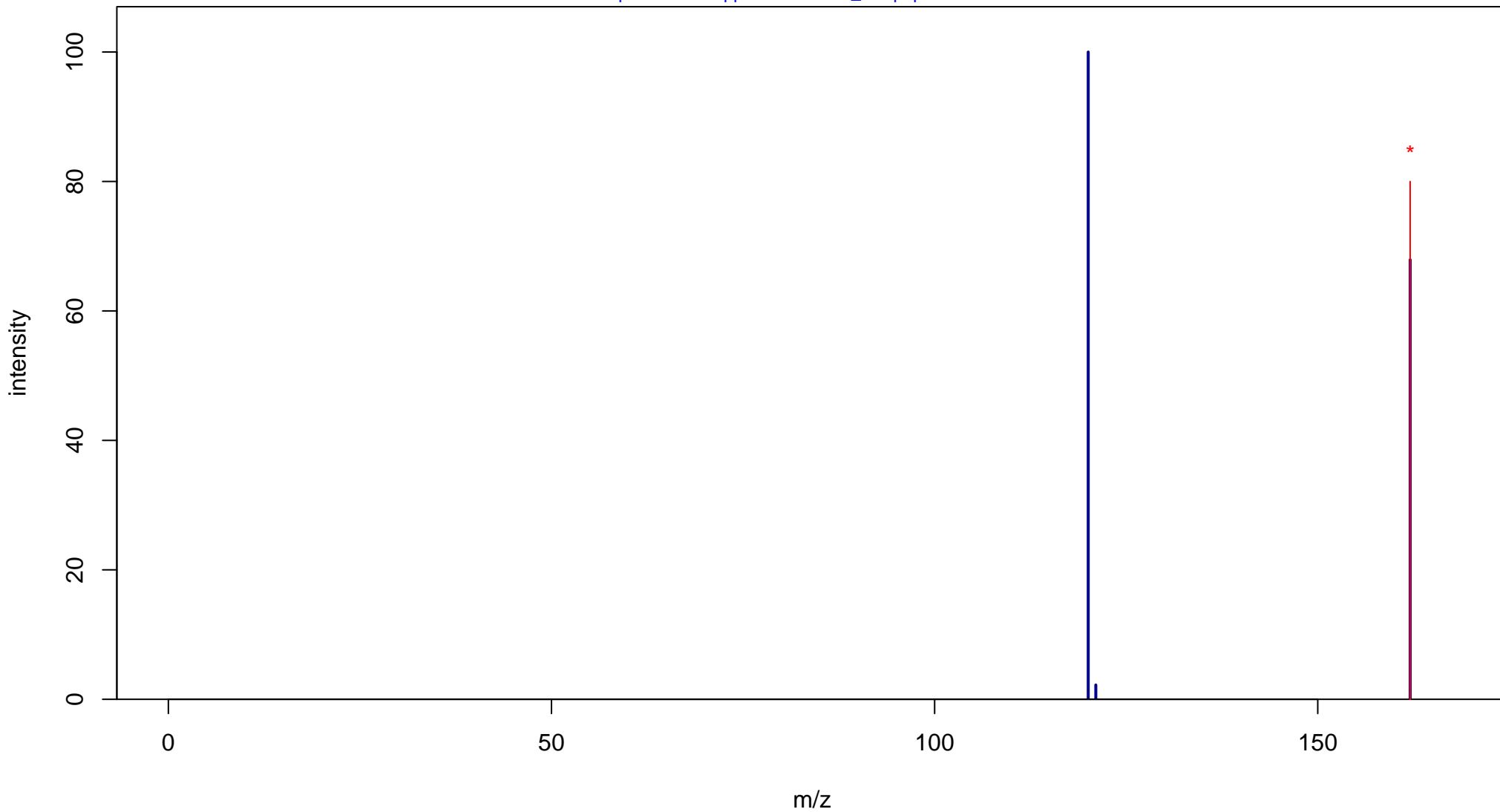
4-Acetamidobenzaldehyde

Mass: 163.0633 Formula: C₉H₉NO₂

mode: - collisionE: 10V

METLIN ID: 2829 SIGMA Prod: A1800

http://metlin.scripps.edu/metabo_info.php?molid=2829



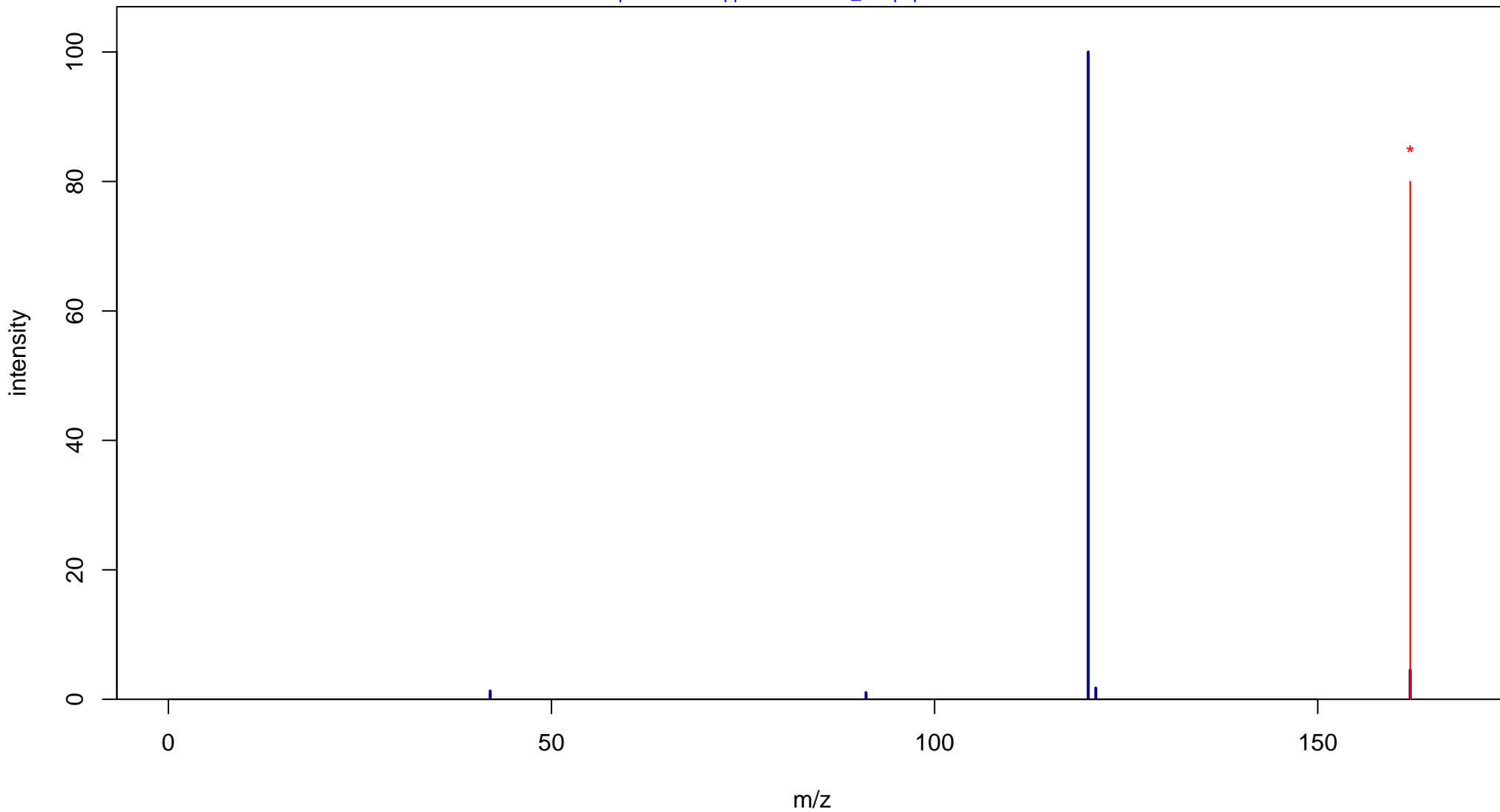
4-Acetamidobenzaldehyde

Mass: 163.0633 Formula: C₉H₉NO₂

mode: - collisionE: 20V

METLIN ID: 2829 SIGMA Prod: A1800

http://metlin.scripps.edu/metabo_info.php?molid=2829



4-Acetamidobenzaldehyde

Mass: 163.0633 Formula: C₉H₉NO₂

mode: - collisionE: 40V

METLIN ID: 2829 SIGMA Prod: A1800

http://metlin.scripps.edu/metabo_info.php?molid=2829

