

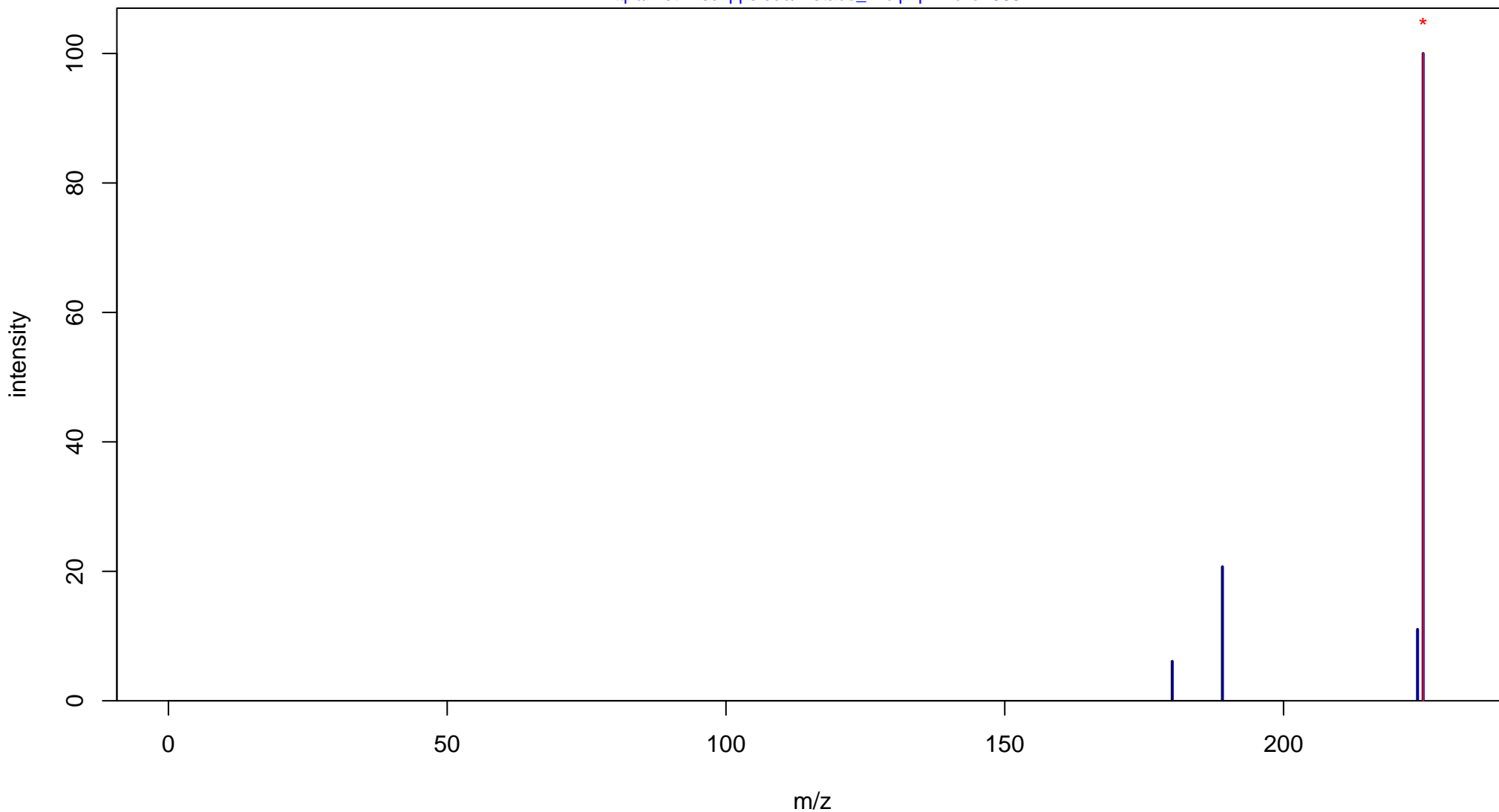
Chorismic acid from *Enterobacter aerogenes*

Mass: 226.0477 Formula: C₁₀H₁₀O₆

mode: - collisionE: 0V

METLIN ID: 368 SIGMA Prod: C1761

http://metlin.scripps.edu/metabo_info.php?molid=368



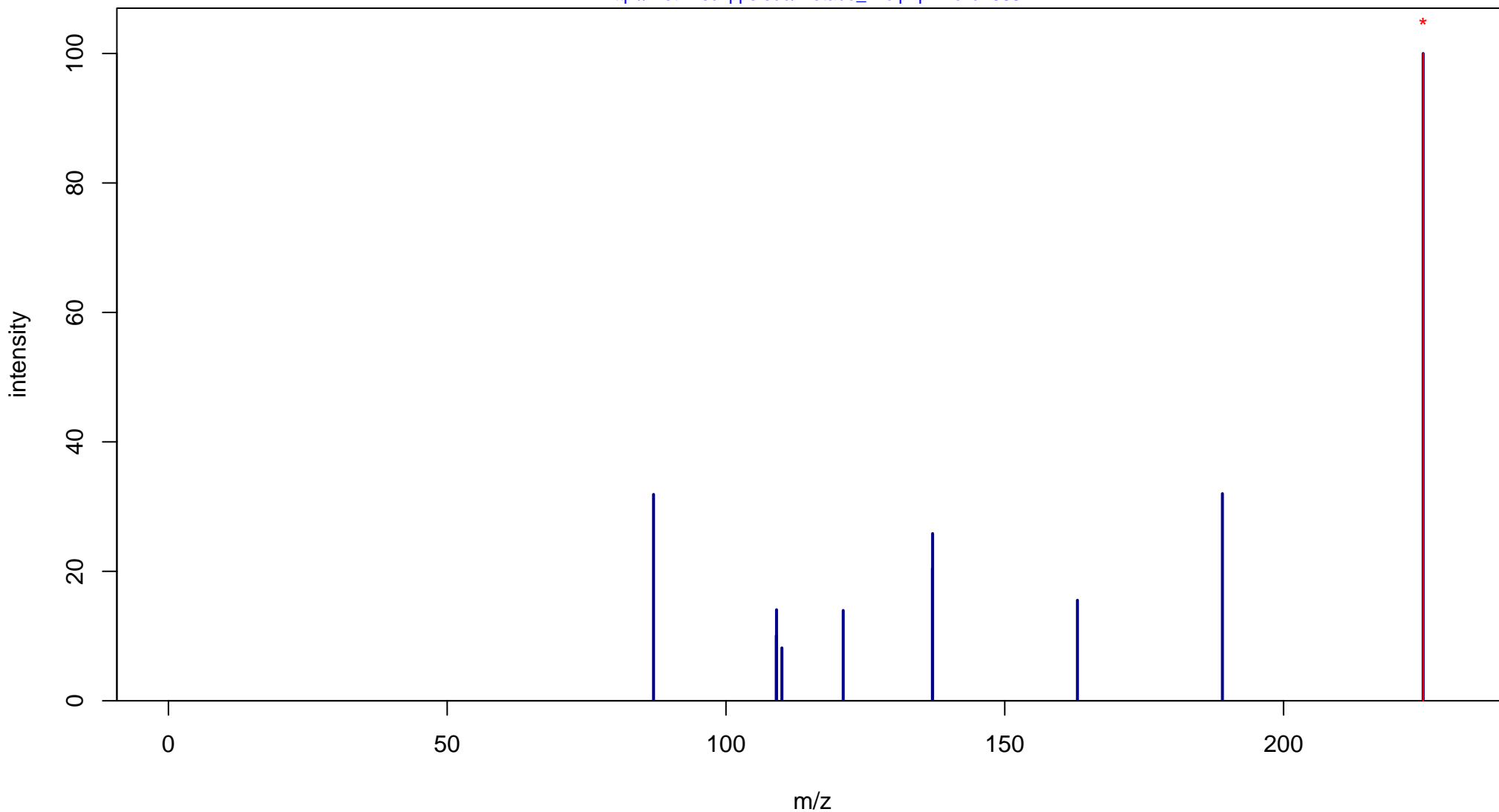
Chorismic acid from *Enterobacter aerogenes*

Mass: 226.0477 Formula: C₁₀H₁₀O₆

mode: - collisionE: 10V

METLIN ID: 368 SIGMA Prod: C1761

http://metlin.scripps.edu/metabo_info.php?molid=368



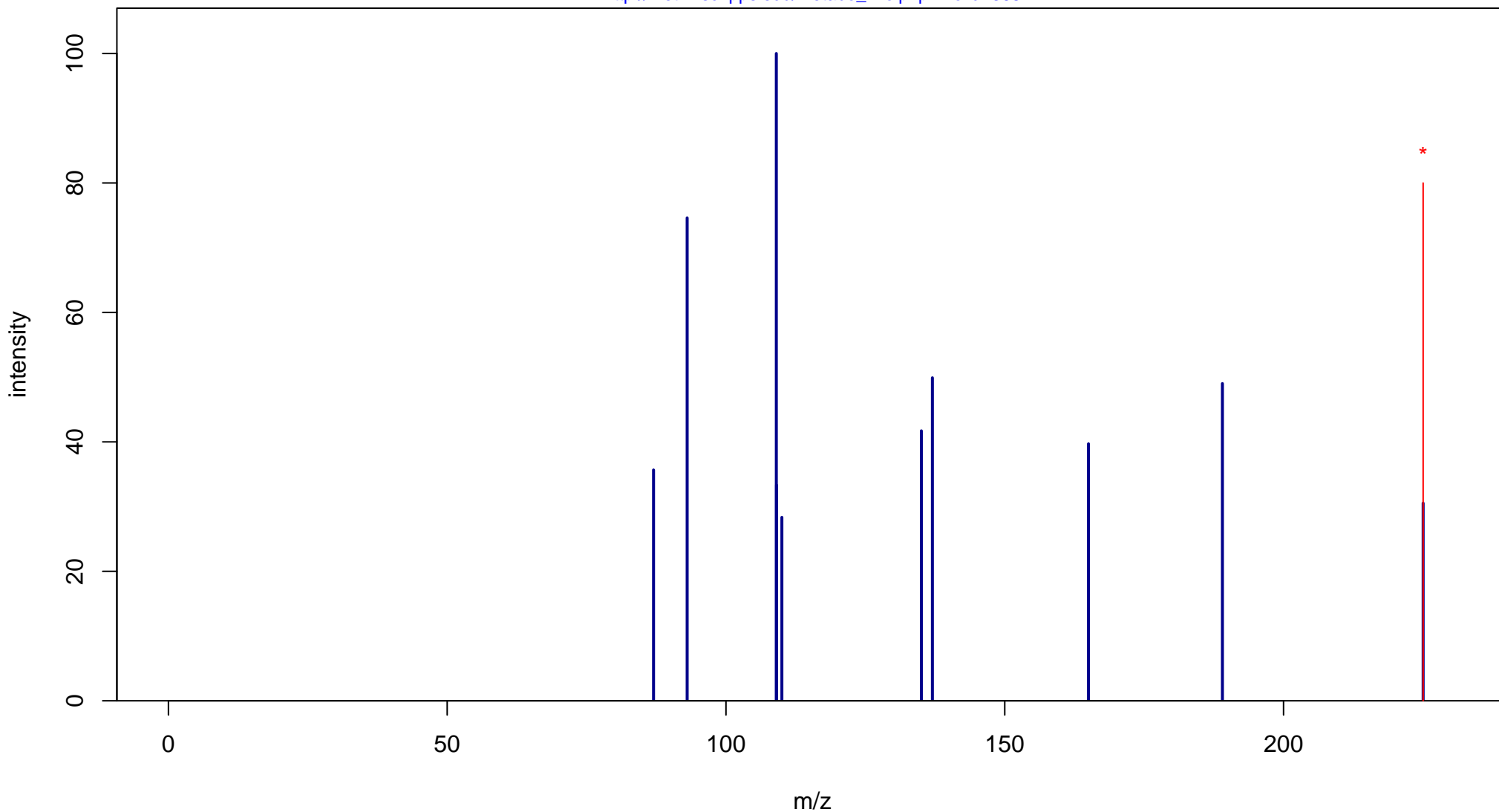
Chorismic acid from *Enterobacter aerogenes*

Mass: 226.0477 Formula: C₁₀H₁₀O₆

mode: - collisionE: 20V

METLIN ID: 368 SIGMA Prod: C1761

http://metlin.scripps.edu/metabo_info.php?molid=368



Chorismic acid from *Enterobacter aerogenes*

Mass: 226.0477 Formula: C₁₀H₁₀O₆

mode: - collisionE: 40V

METLIN ID: 368 SIGMA Prod: C1761

http://metlin.scripps.edu/metabo_info.php?molid=368

