

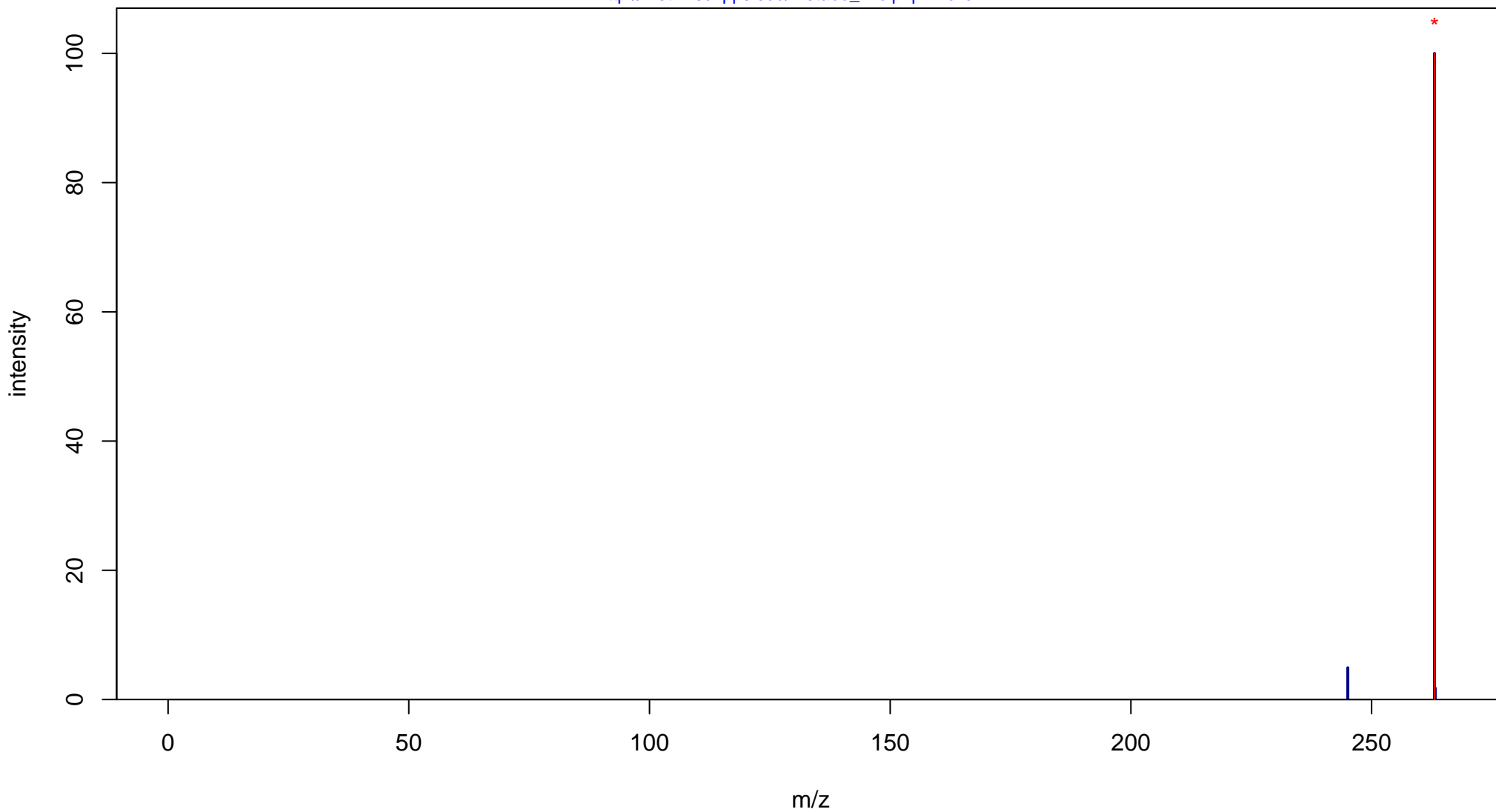
Cinoxacin

Mass: 262.059 Formula: C₁₂H₁₀N₂O₅

mode: + collisionE: 0V

METLIN ID: 1771 SIGMA Prod: C8645

http://metlin.scripps.edu/metabo_info.php?molid=1771



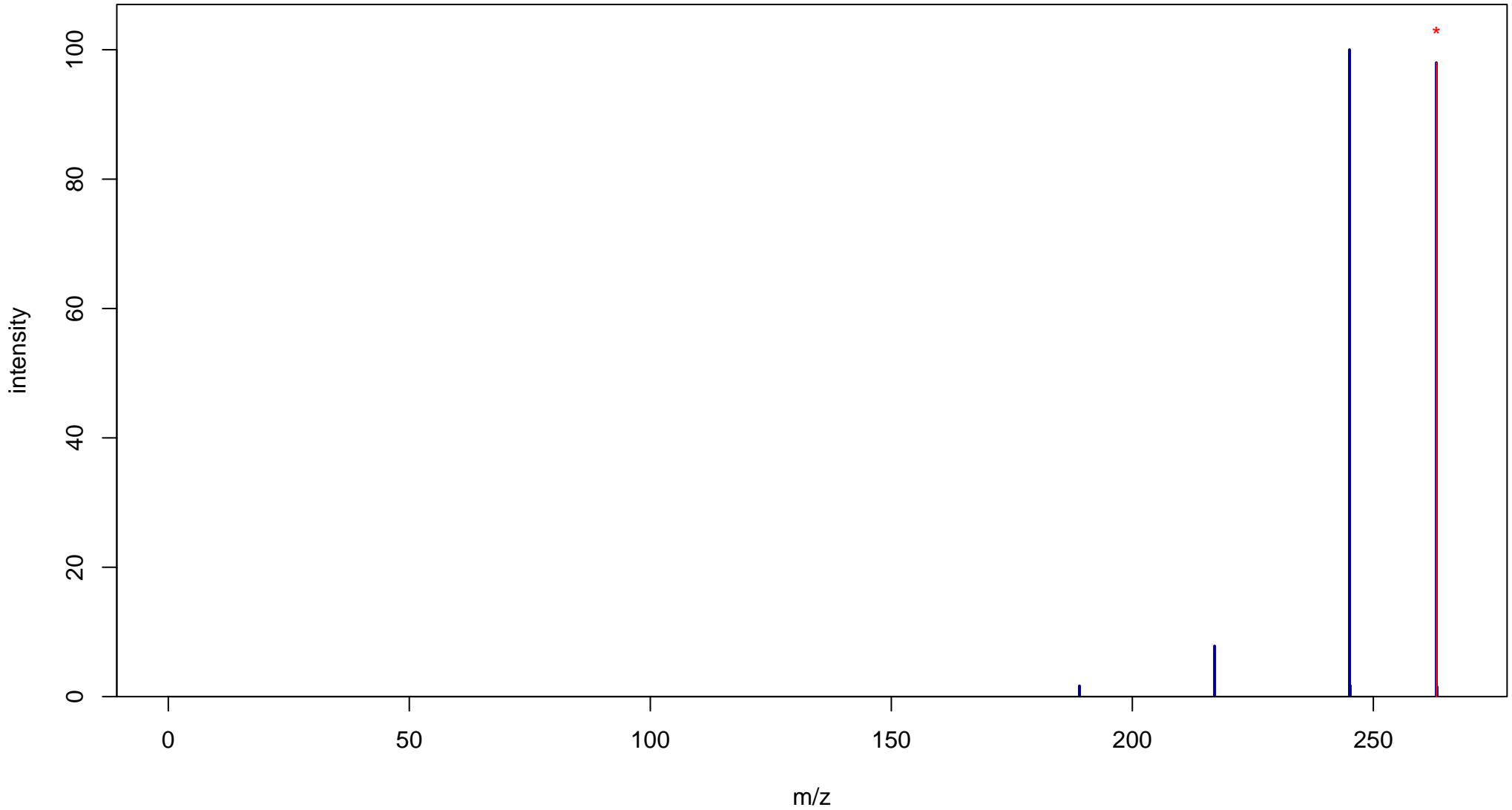
Cinoxacin

Mass: 262.059 Formula: C₁₂H₁₀N₂O₅

mode: + collisionE: 10V

METLIN ID: 1771 SIGMA Prod: C8645

http://metlin.scripps.edu/metabo_info.php?molid=1771



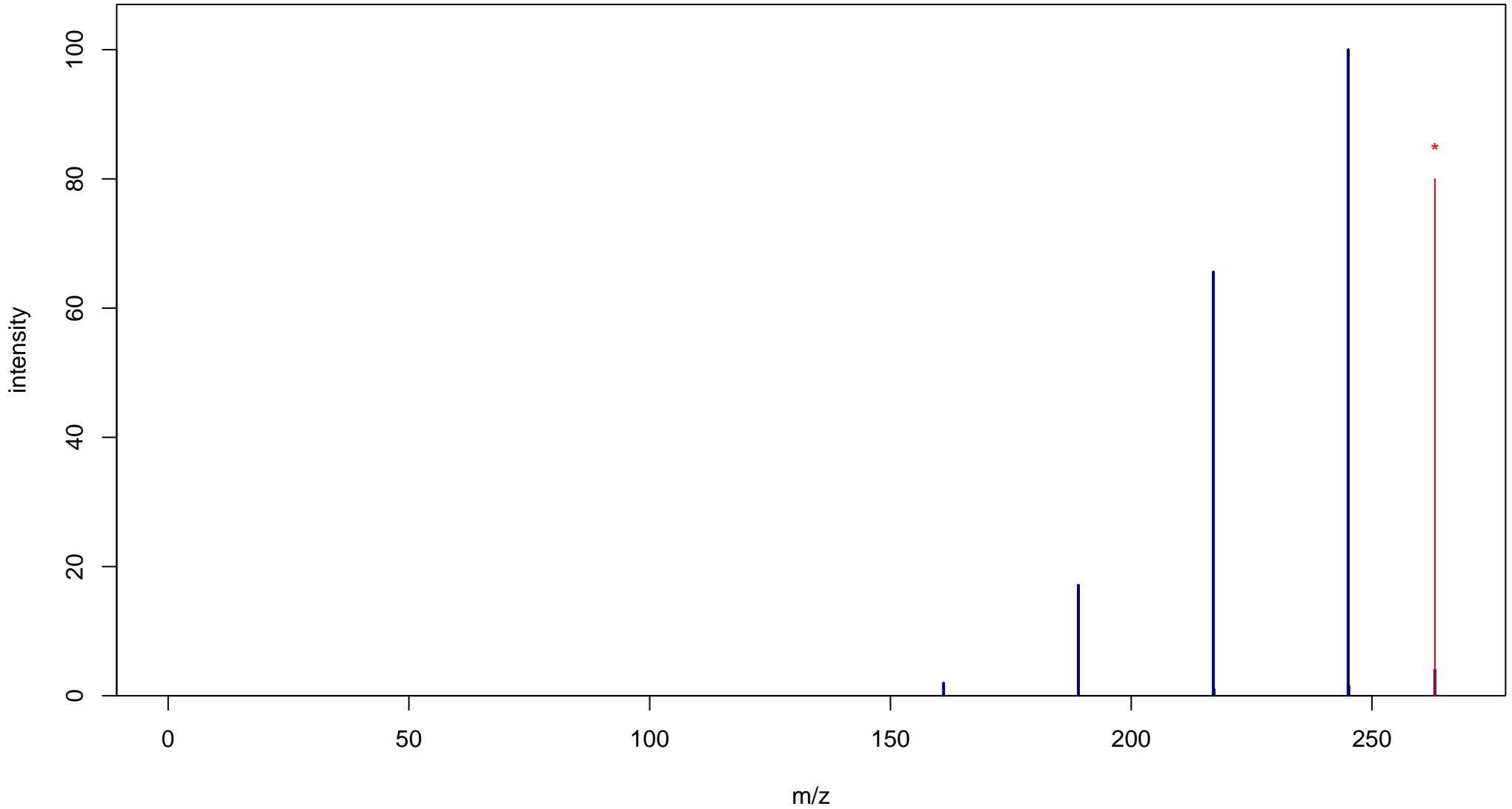
Cinoxacin

Mass: 262.059 Formula: C₁₂H₁₀N₂O₅

mode: + collisionE: 20V

METLIN ID: 1771 SIGMA Prod: C8645

http://metlin.scripps.edu/metabo_info.php?molid=1771



Cinoxacin

Mass: 262.059 Formula: C₁₂H₁₀N₂O₅

mode: + collisionE: 40V

METLIN ID: 1771 SIGMA Prod: C8645

http://metlin.scripps.edu/metabo_info.php?molid=1771

