

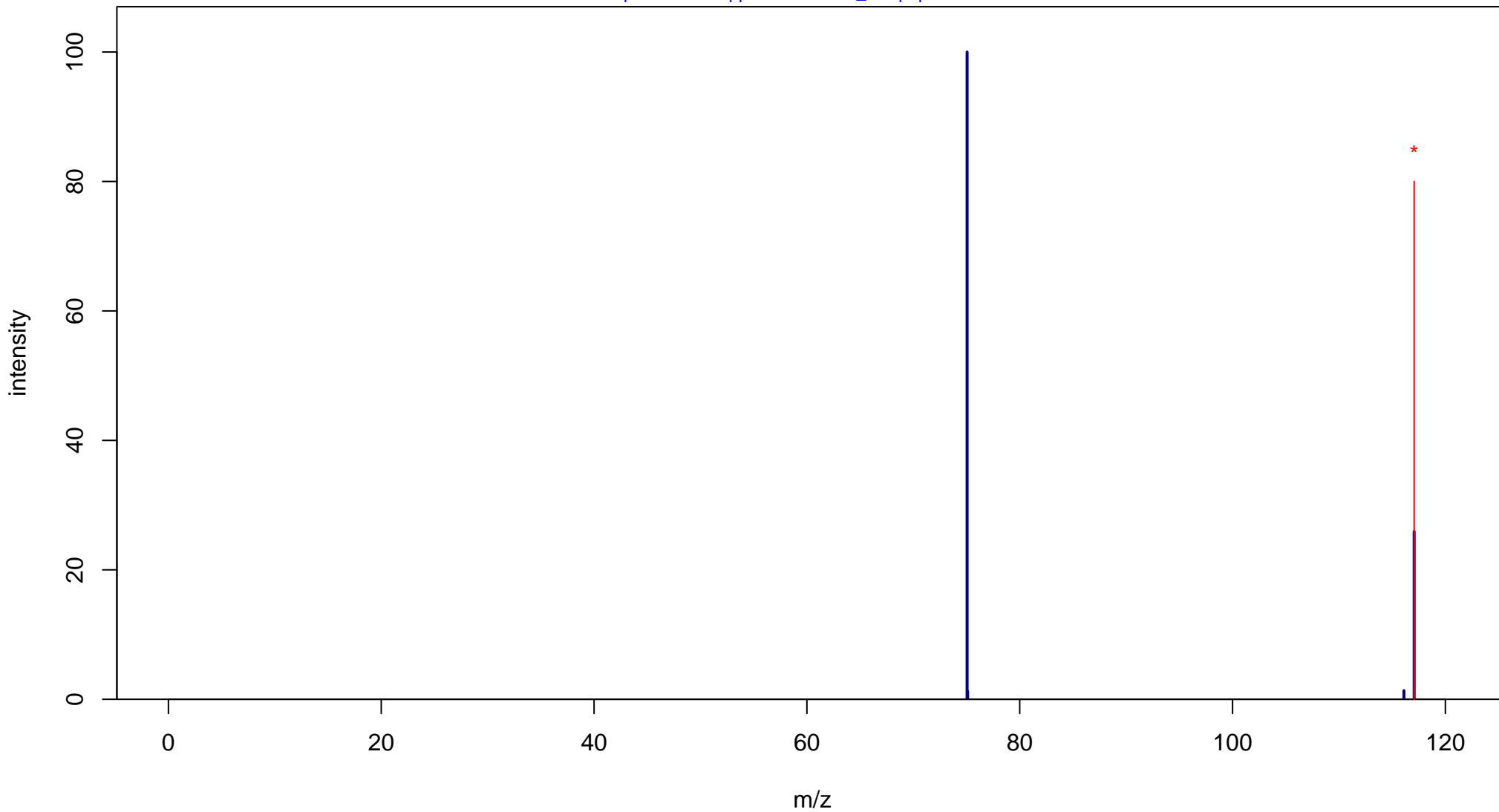
1,2-Diacetylhydrazine

Mass: 116.0586 Formula: C₄H₈N₂O₂

mode: + collisionE: 0V

METLIN ID: 851 SIGMA Prod: D8402

http://metlin.scripps.edu/metabo_info.php?molid=851



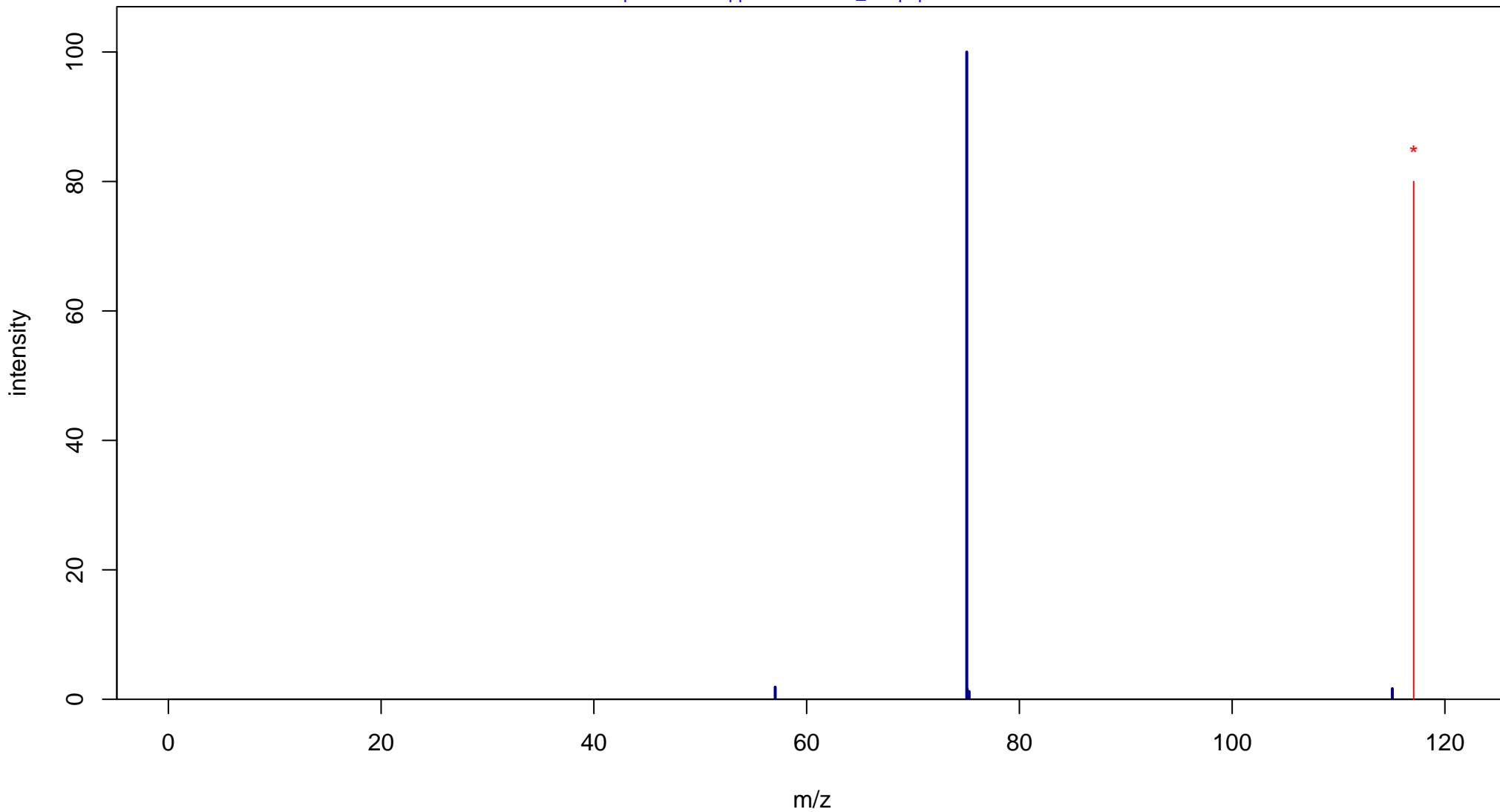
1,2-Diacetylhydrazine

Mass: 116.0586 Formula: C₄H₈N₂O₂

mode: + collisionE: 10V

METLIN ID: 851 SIGMA Prod: D8402

http://metlin.scripps.edu/metabo_info.php?molid=851



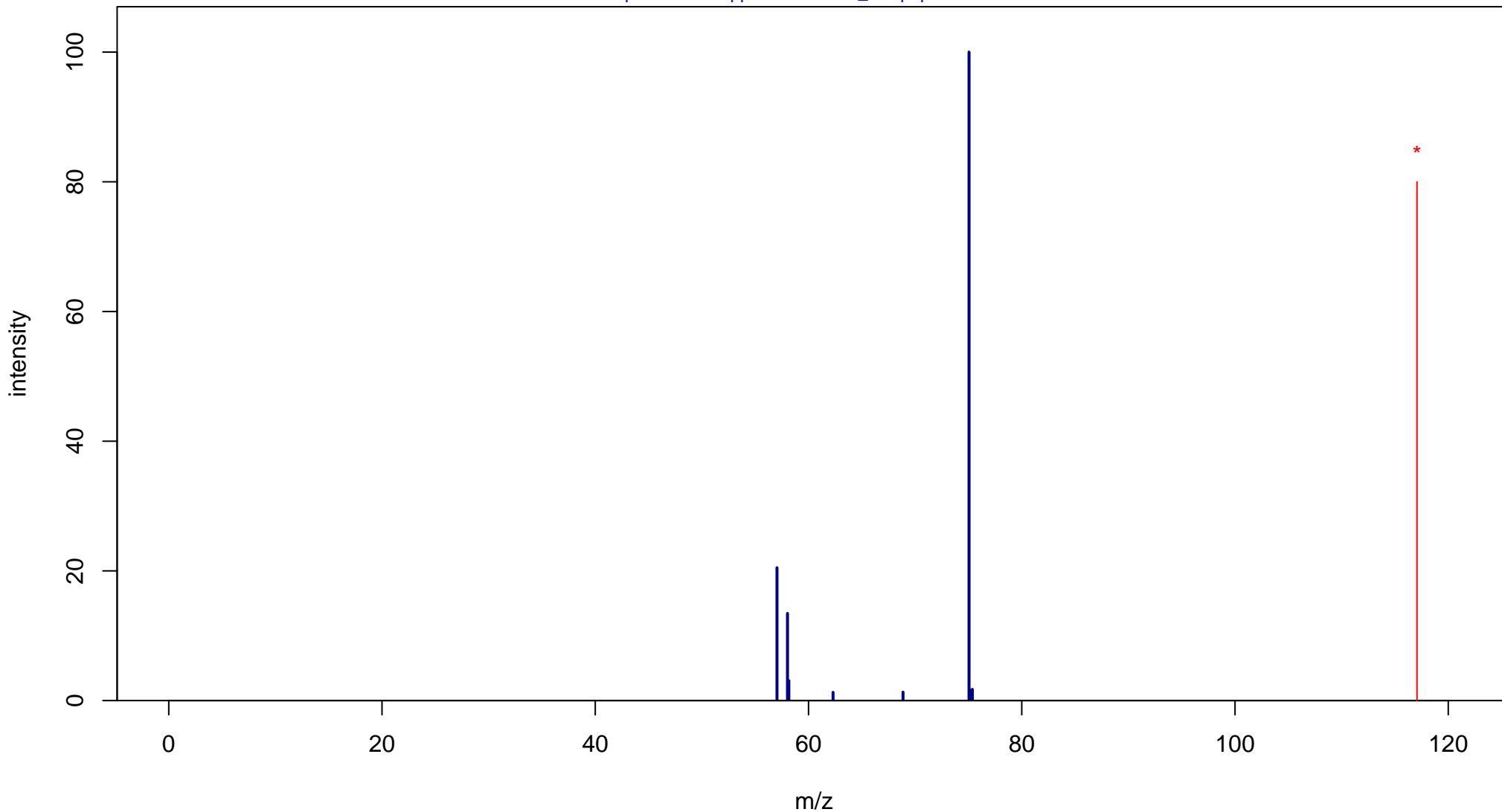
1,2-Diacetylhydrazine

Mass: 116.0586 Formula: C₄H₈N₂O₂

mode: + collisionE: 20V

METLIN ID: 851 SIGMA Prod: D8402

http://metlin.scripps.edu/metabo_info.php?molid=851



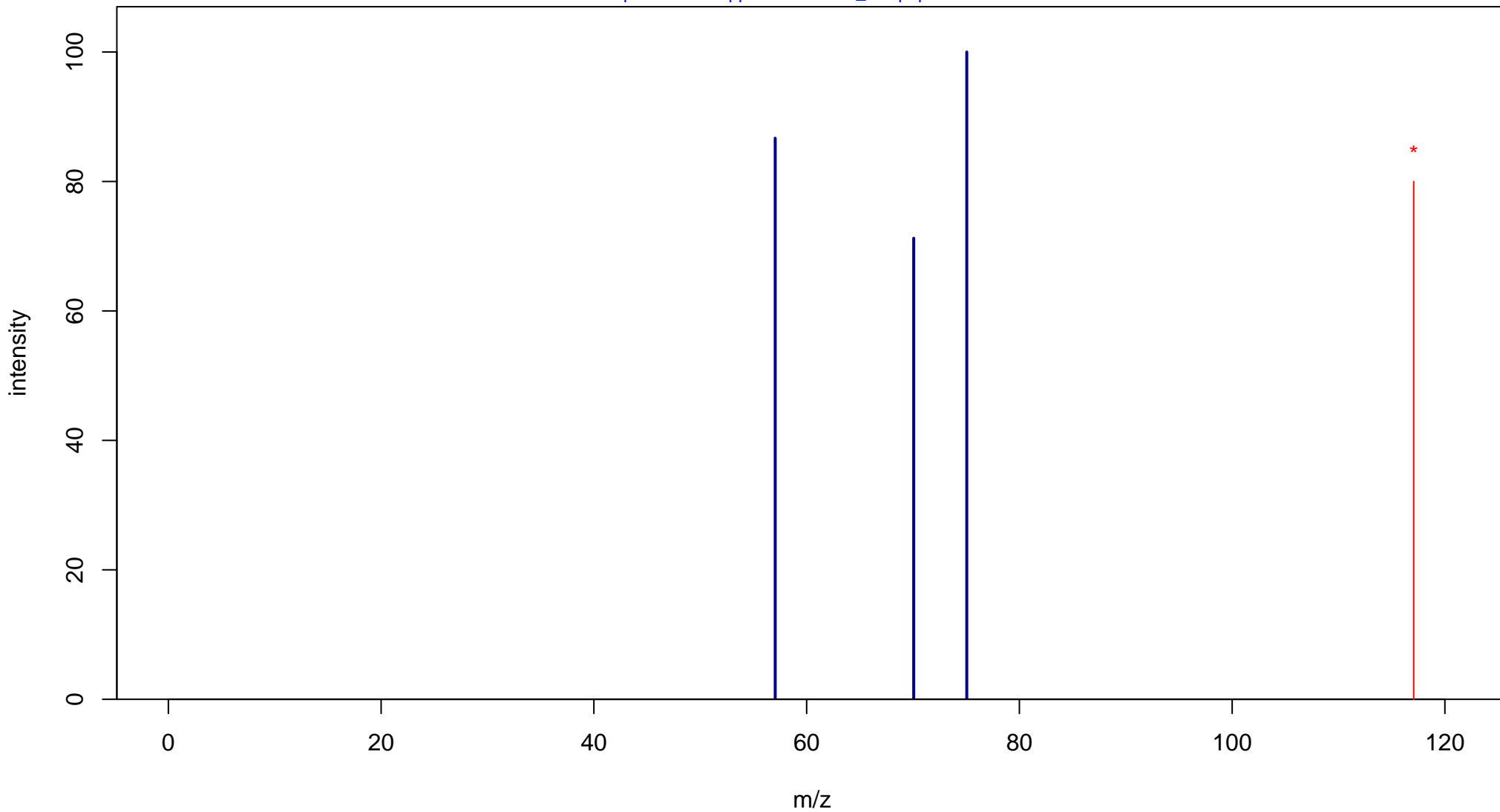
1,2-Diacetylhydrazine

Mass: 116.0586 Formula: C₄H₈N₂O₂

mode: + collisionE: 40V

METLIN ID: 851 SIGMA Prod: D8402

http://metlin.scripps.edu/metabo_info.php?molid=851



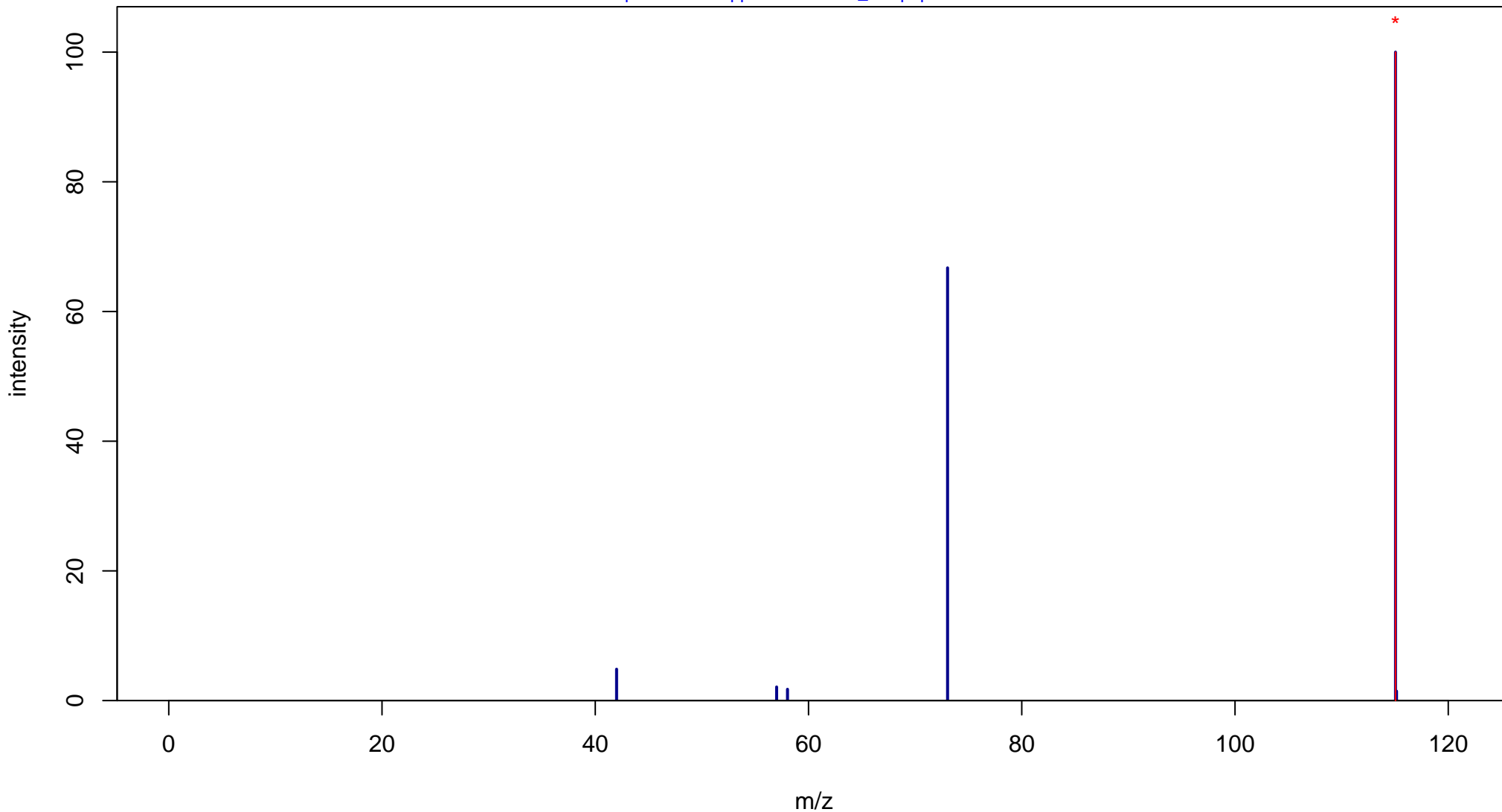
1,2-Diacetylhydrazine

Mass: 116.0586 Formula: C₄H₈N₂O₂

mode: - collisionE: 0V

METLIN ID: 851 SIGMA Prod: D8402

http://metlin.scripps.edu/metabo_info.php?molid=851



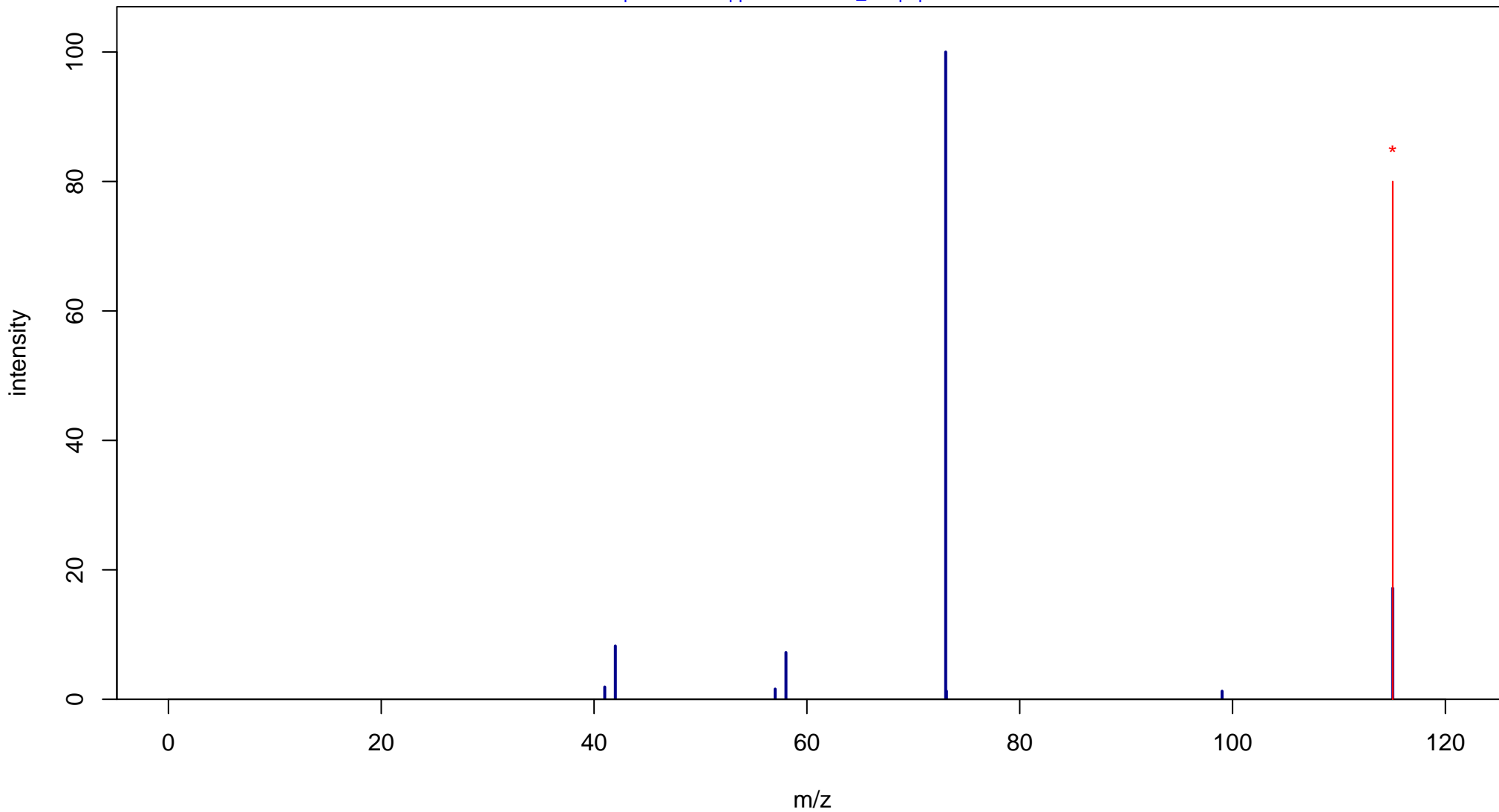
1,2-Diacetylhydrazine

Mass: 116.0586 Formula: C₄H₈N₂O₂

mode: - collisionE: 10V

METLIN ID: 851 SIGMA Prod: D8402

http://metlin.scripps.edu/metabo_info.php?molid=851



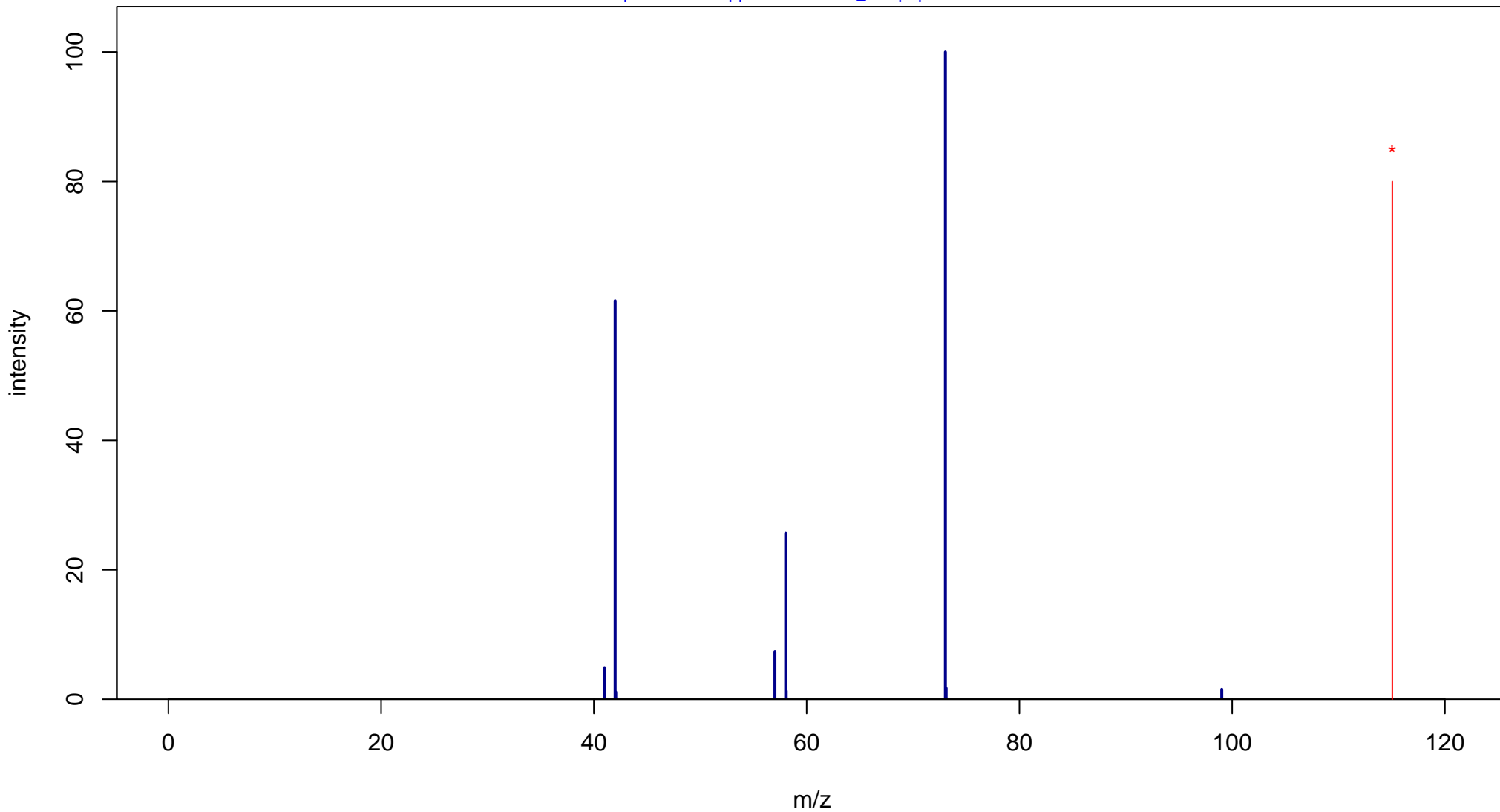
1,2-Diacetylhydrazine

Mass: 116.0586 Formula: C₄H₈N₂O₂

mode: - collisionE: 20V

METLIN ID: 851 SIGMA Prod: D8402

http://metlin.scripps.edu/metabo_info.php?molid=851



1,2-Diacetylhydrazine

Mass: 116.0586 Formula: C₄H₈N₂O₂

mode: - collisionE: 40V

METLIN ID: 851 SIGMA Prod: D8402

http://metlin.scripps.edu/metabo_info.php?molid=851

