

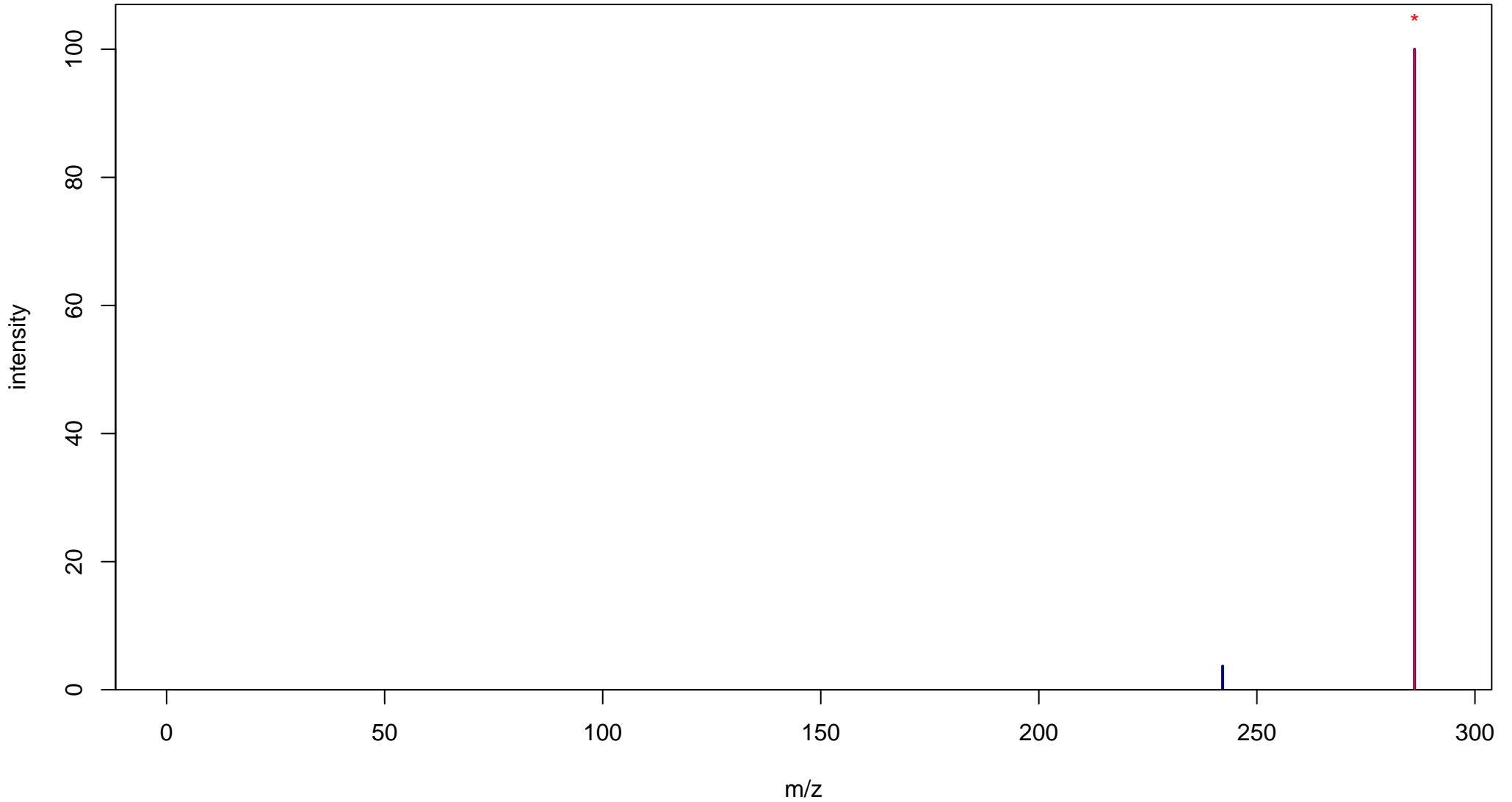
Etodolac

Mass: 287.1521 Formula: C₁₇H₂₁NO₃

mode: - collisionE: 0V

METLIN ID: 2630 SIGMA Prod: E0516

http://metlin.scripps.edu/metabo_info.php?molid=2630



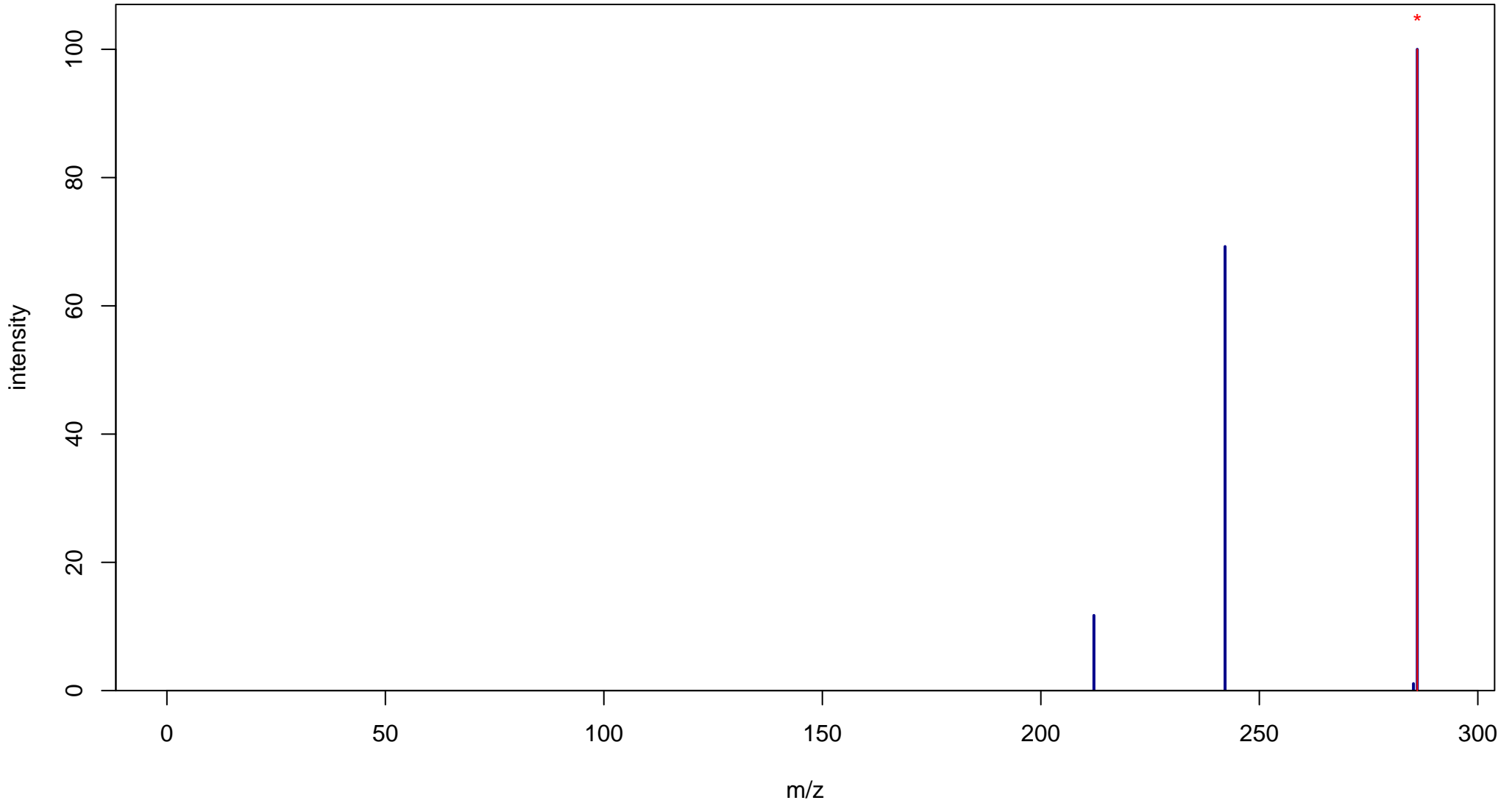
Etodolac

Mass: 287.1521 Formula: C₁₇H₂₁NO₃

mode: - collisionE: 10V

METLIN ID: 2630 SIGMA Prod: E0516

http://metlin.scripps.edu/metabo_info.php?molid=2630



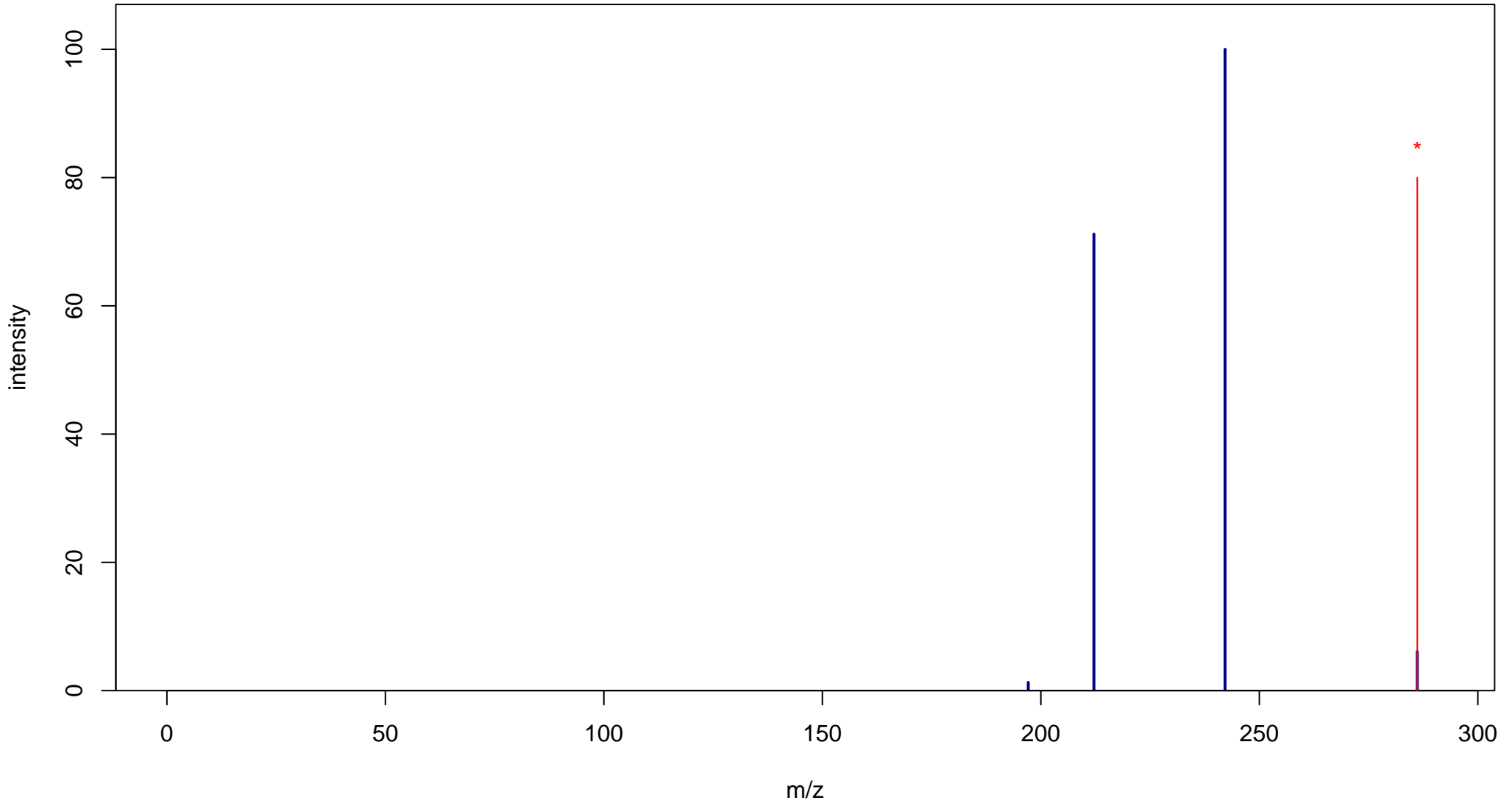
Etodolac

Mass: 287.1521 Formula: C₁₇H₂₁NO₃

mode: - collisionE: 20V

METLIN ID: 2630 SIGMA Prod: E0516

http://metlin.scripps.edu/metabo_info.php?molid=2630



Etodolac

Mass: 287.1521 Formula: C₁₇H₂₁NO₃

mode: - collisionE: 40V

METLIN ID: 2630 SIGMA Prod: E0516

http://metlin.scripps.edu/metabo_info.php?molid=2630

