

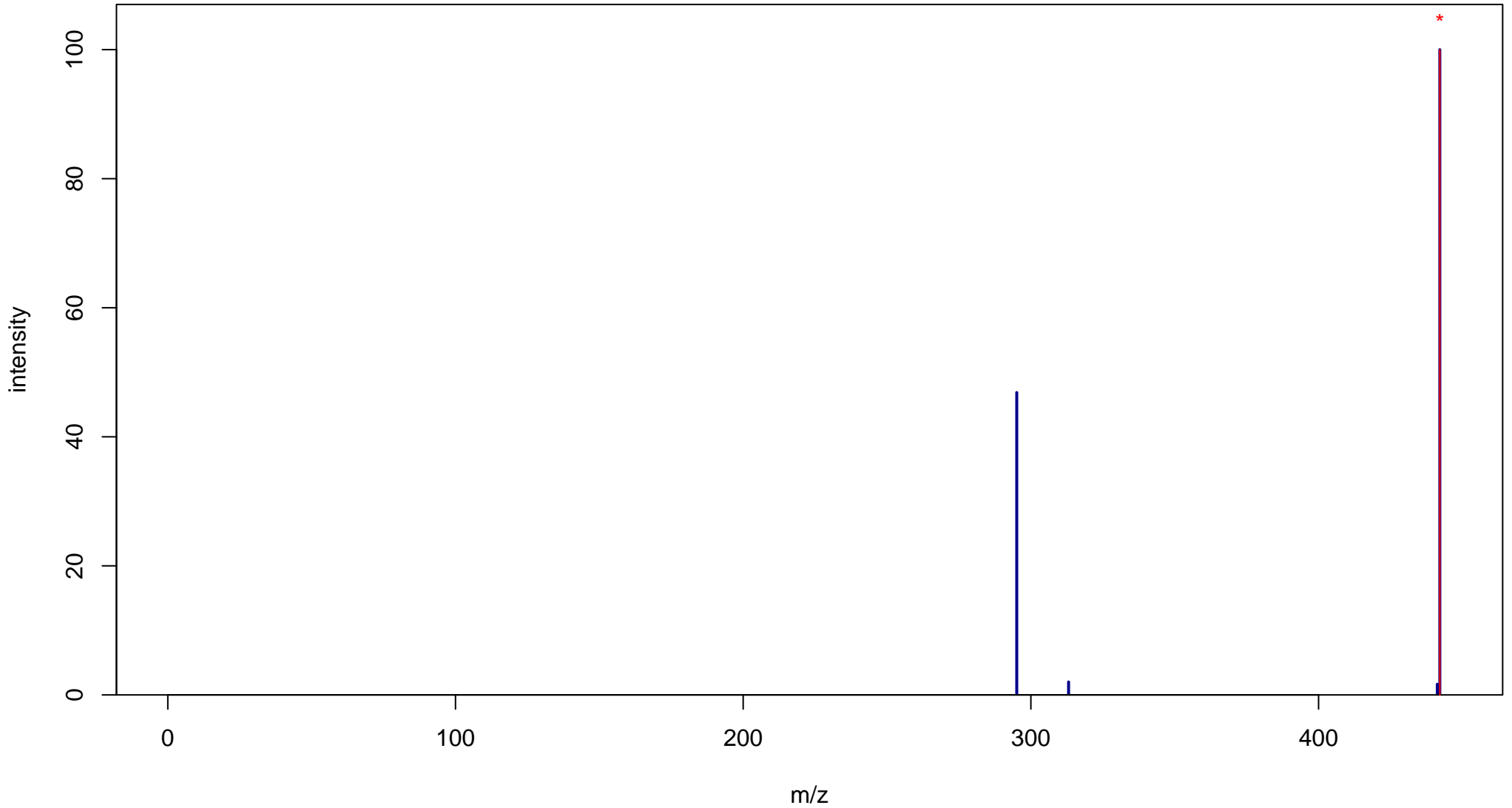
Folic acid

Mass: 441.1397 Formula: C₁₉H₁₉N₇O₆

mode: + collisionE: 0V

METLIN ID: 246 SIGMA Prod: F8758

http://metlin.scripps.edu/metabo_info.php?molid=246



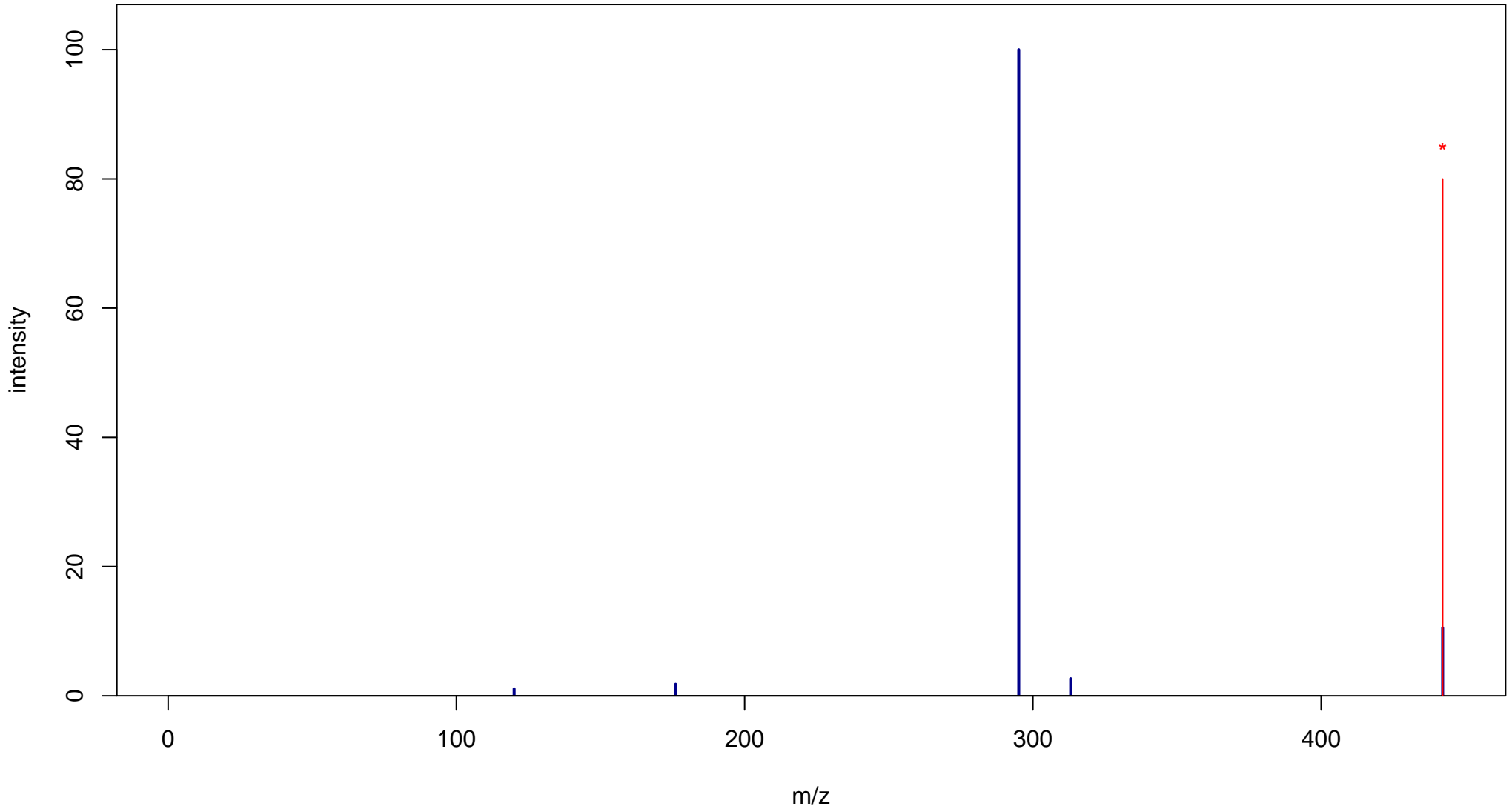
Folic acid

Mass: 441.1397 Formula: C₁₉H₁₉N₇O₆

mode: + collisionE: 10V

METLIN ID: 246 SIGMA Prod: F8758

http://metlin.scripps.edu/metabo_info.php?molid=246



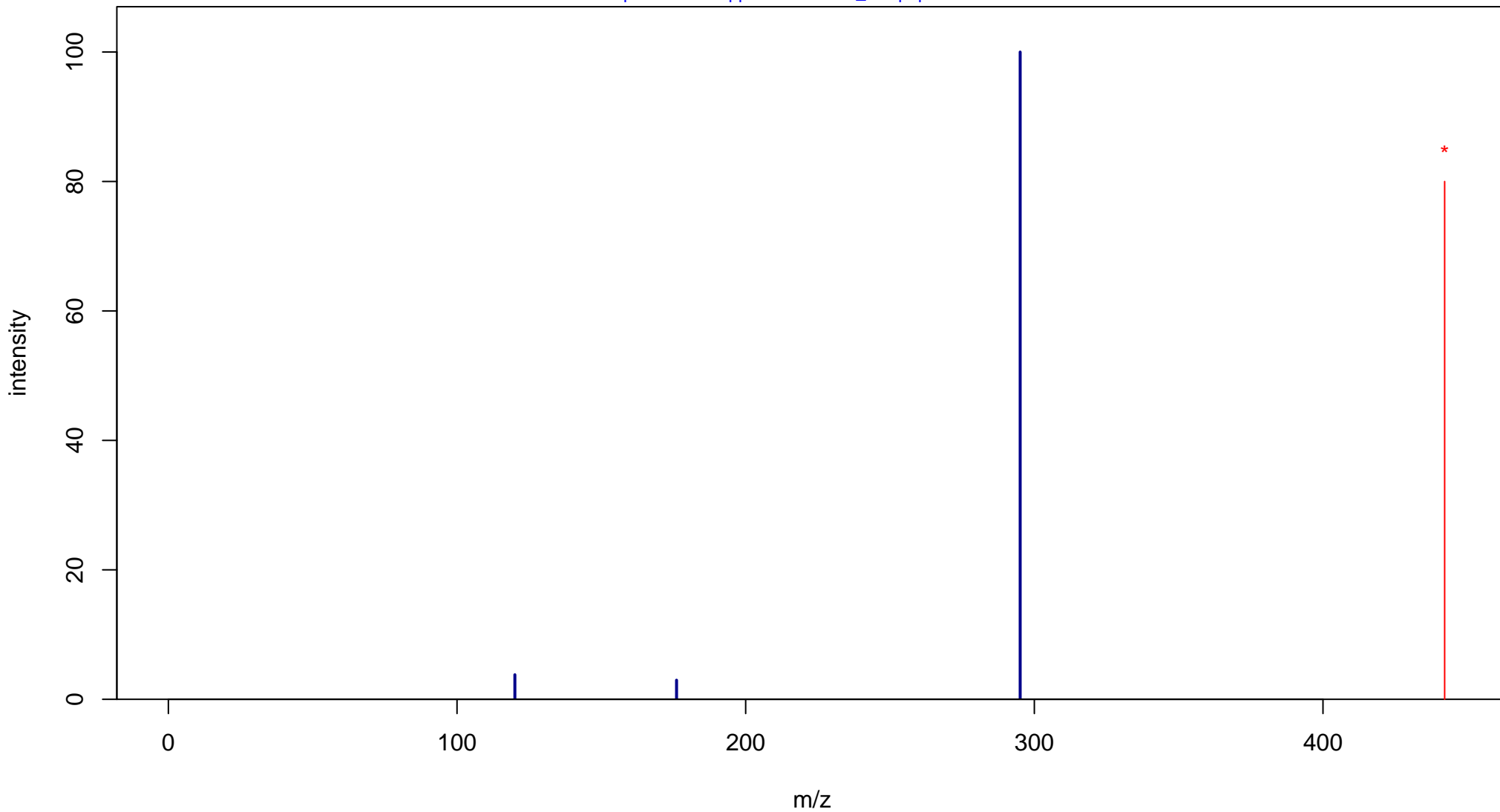
Folic acid

Mass: 441.1397 Formula: C₁₉H₁₉N₇O₆

mode: + collisionE: 20V

METLIN ID: 246 SIGMA Prod: F8758

http://metlin.scripps.edu/metabo_info.php?molid=246



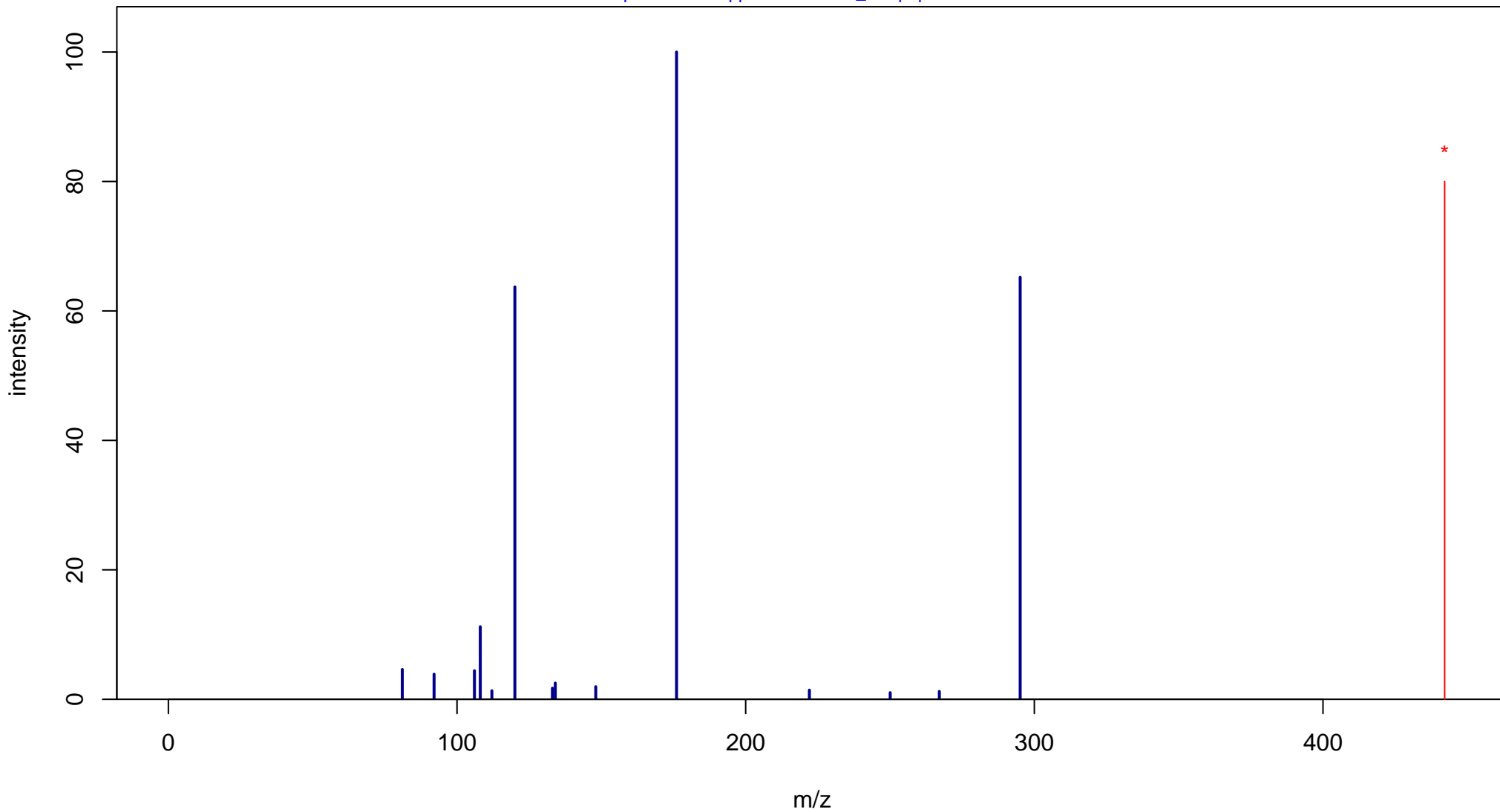
Folic acid

Mass: 441.1397 Formula: C₁₉H₁₉N₇O₆

mode: + collisionE: 40V

METLIN ID: 246 SIGMA Prod: F8758

http://metlin.scripps.edu/metabo_info.php?molid=246



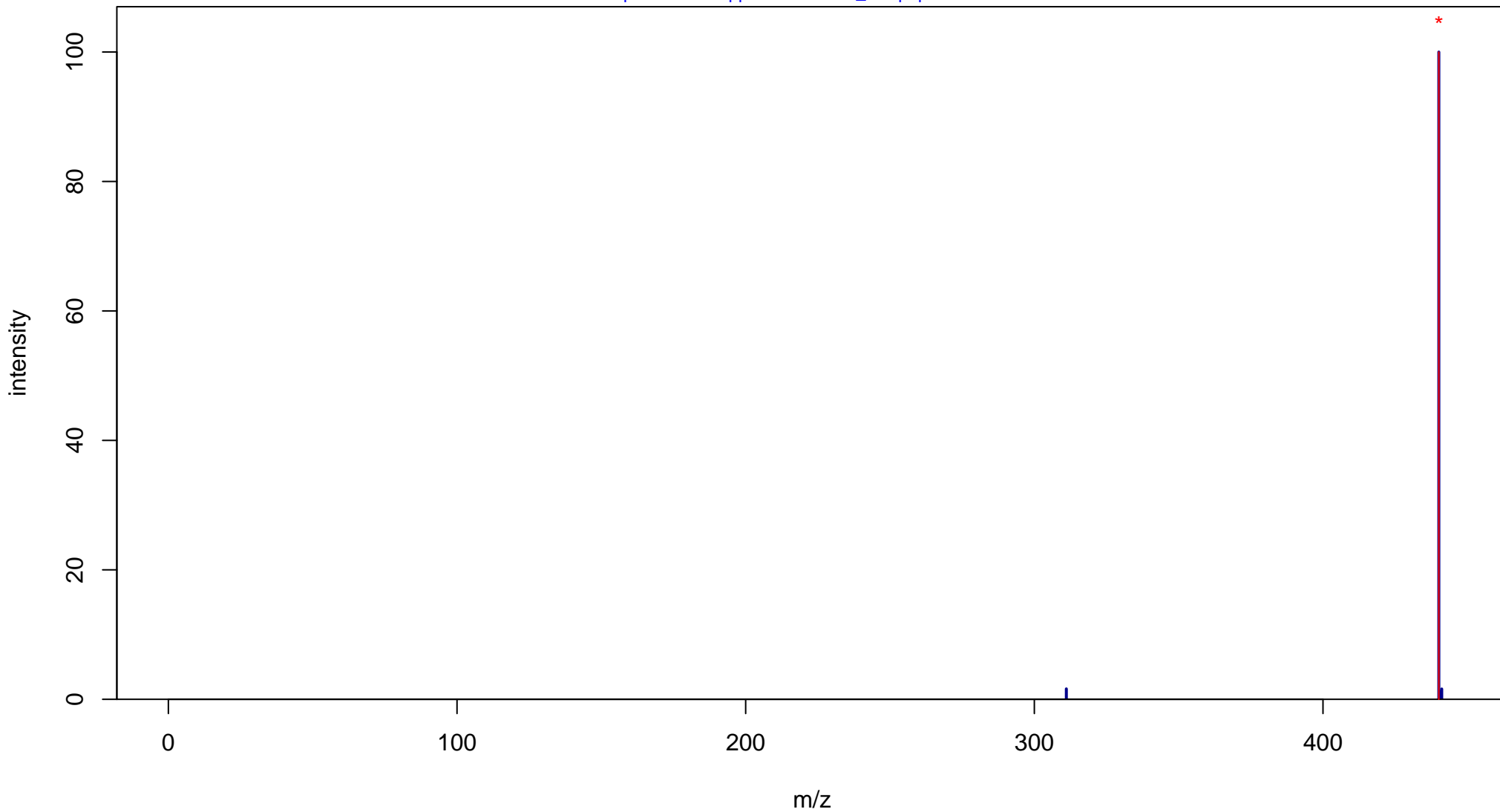
Folic acid

Mass: 441.1397 Formula: C₁₉H₁₉N₇O₆

mode: - collisionE: 0V

METLIN ID: 246 SIGMA Prod: F8758

http://metlin.scripps.edu/metabo_info.php?molid=246



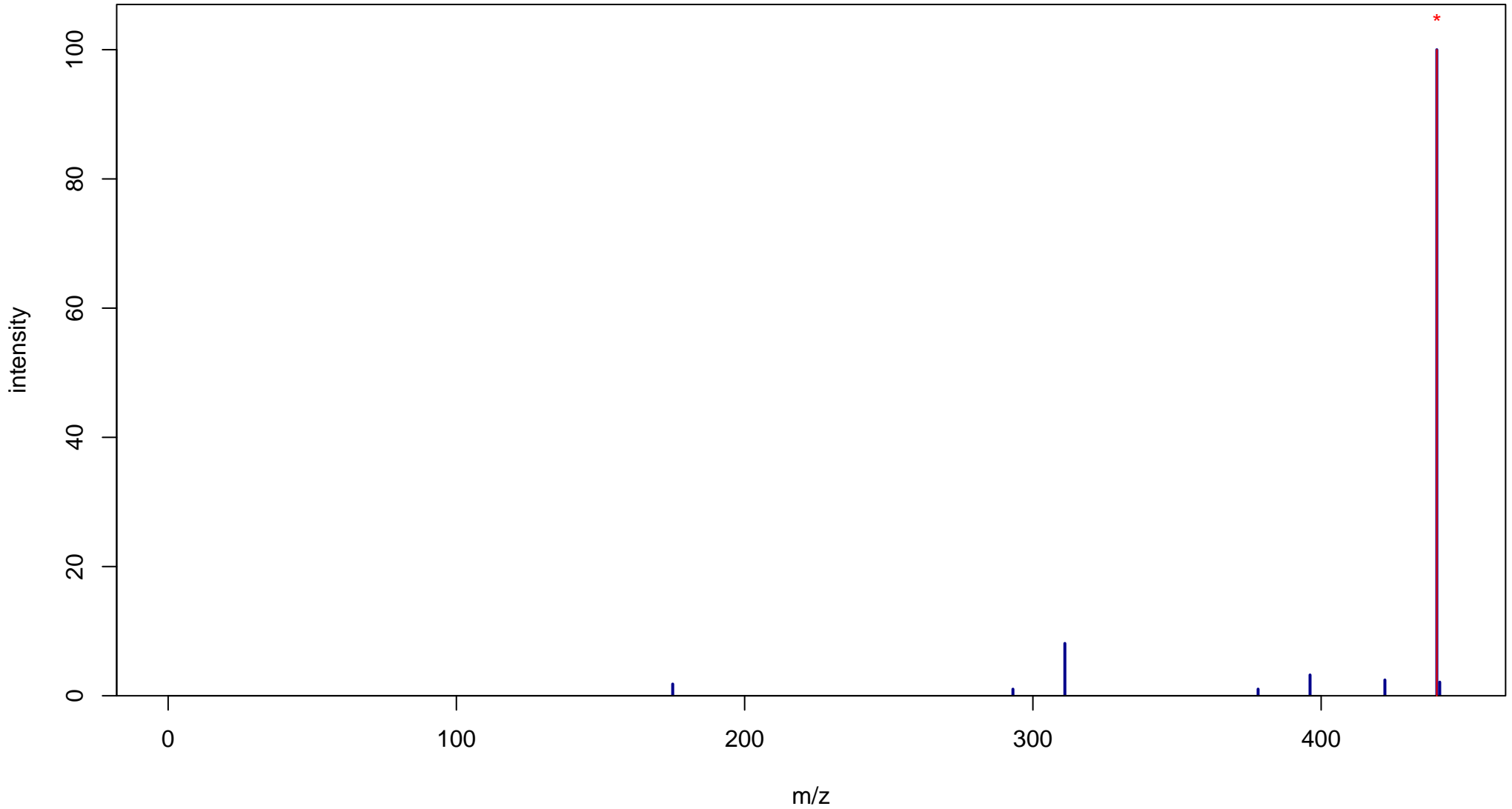
Folic acid

Mass: 441.1397 Formula: C₁₉H₁₉N₇O₆

mode: - collisionE: 10V

METLIN ID: 246 SIGMA Prod: F8758

http://metlin.scripps.edu/metabo_info.php?molid=246



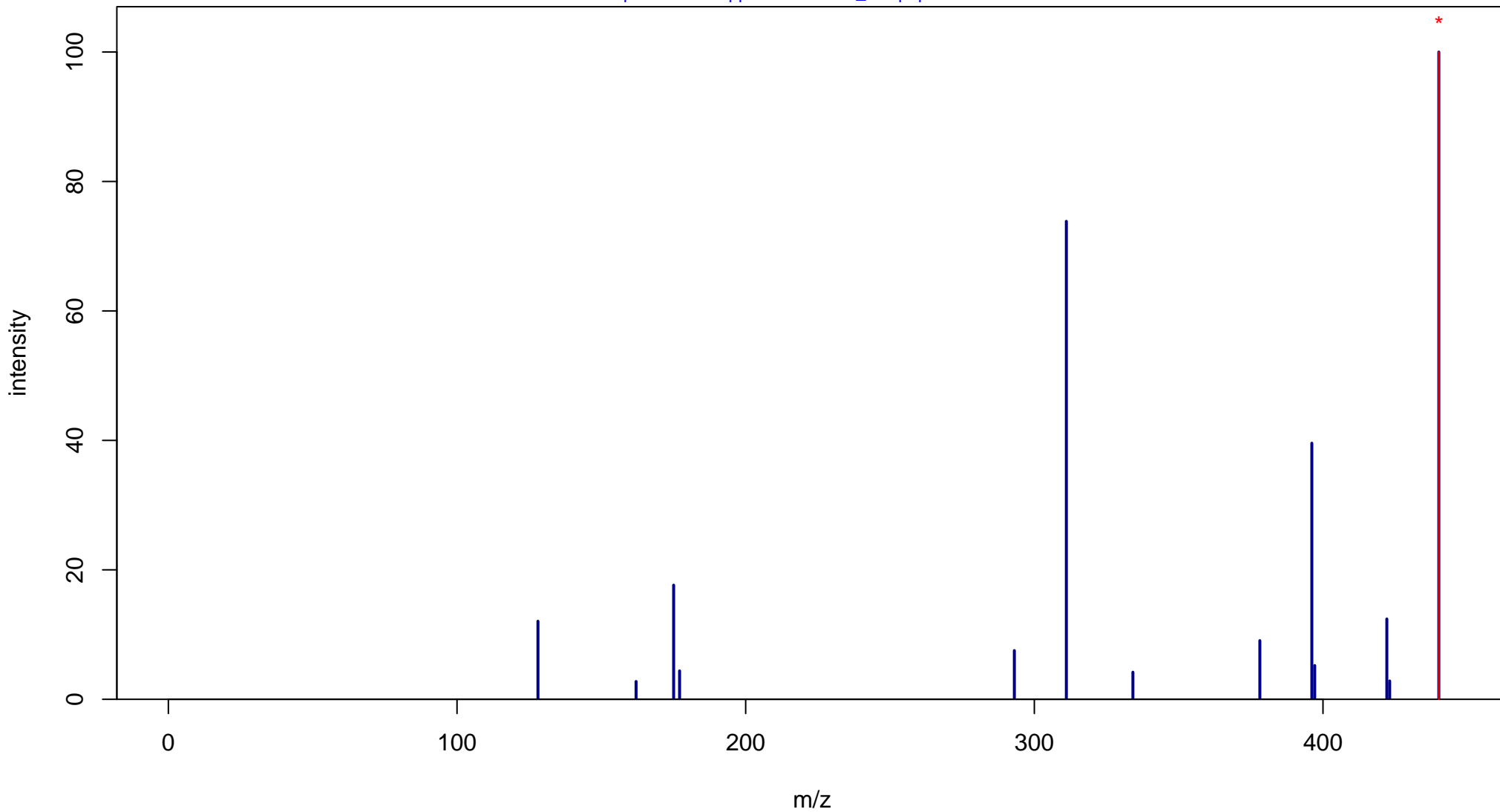
Folic acid

Mass: 441.1397 Formula: C₁₉H₁₉N₇O₆

mode: - collisionE: 20V

METLIN ID: 246 SIGMA Prod: F8758

http://metlin.scripps.edu/metabo_info.php?molid=246



Folic acid

Mass: 441.1397 Formula: C₁₉H₁₉N₇O₆

mode: - collisionE: 40V

METLIN ID: 246 SIGMA Prod: F8758

http://metlin.scripps.edu/metabo_info.php?molid=246

