

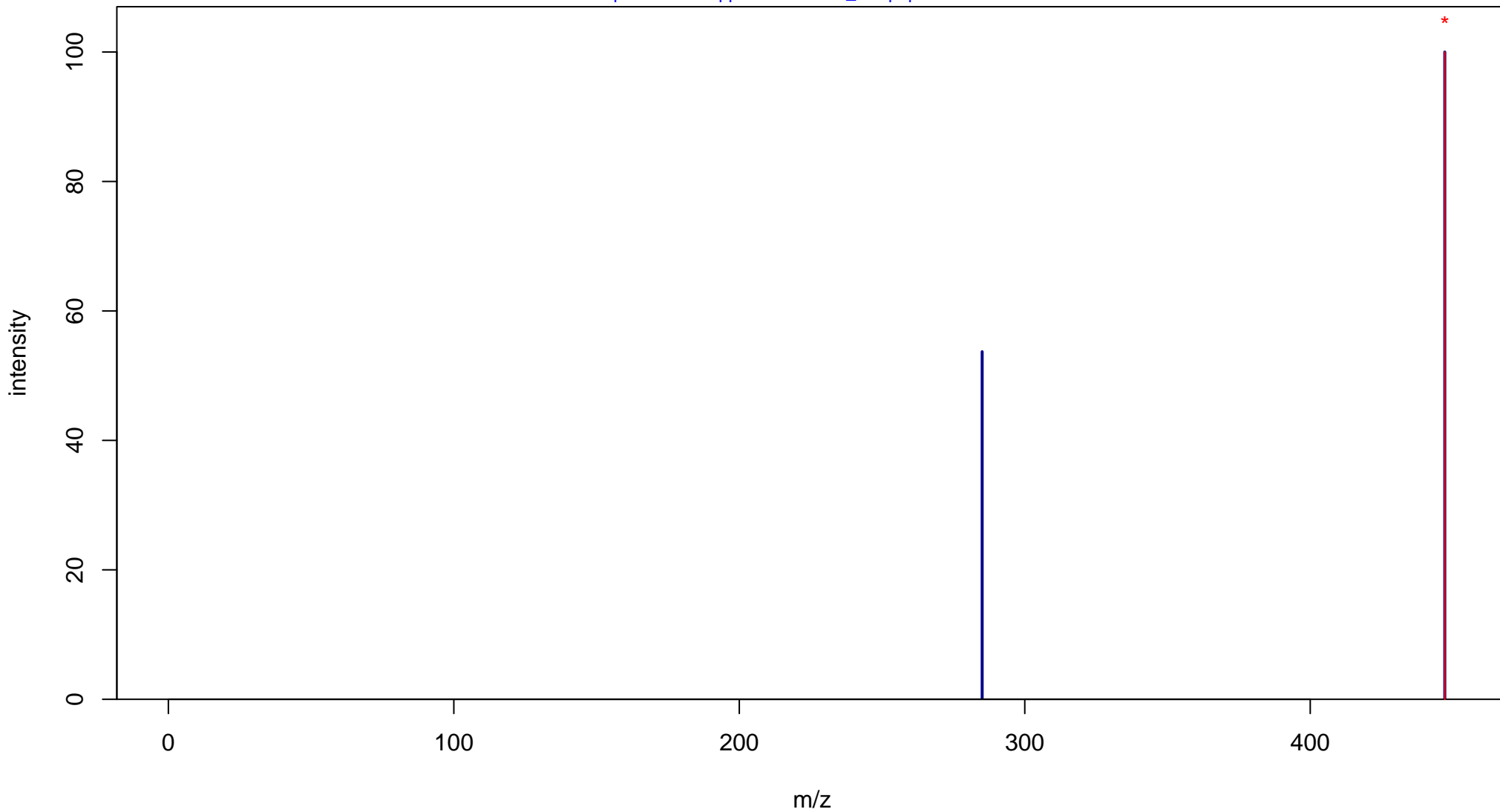
Glycitin

Mass: 446.1213 Formula: C₂₂H₂₂O₁₀

mode: + collisionE: 0V

METLIN ID: 64303 SIGMA Prod: G1296

http://metlin.scripps.edu/metabo_info.php?molid=64303



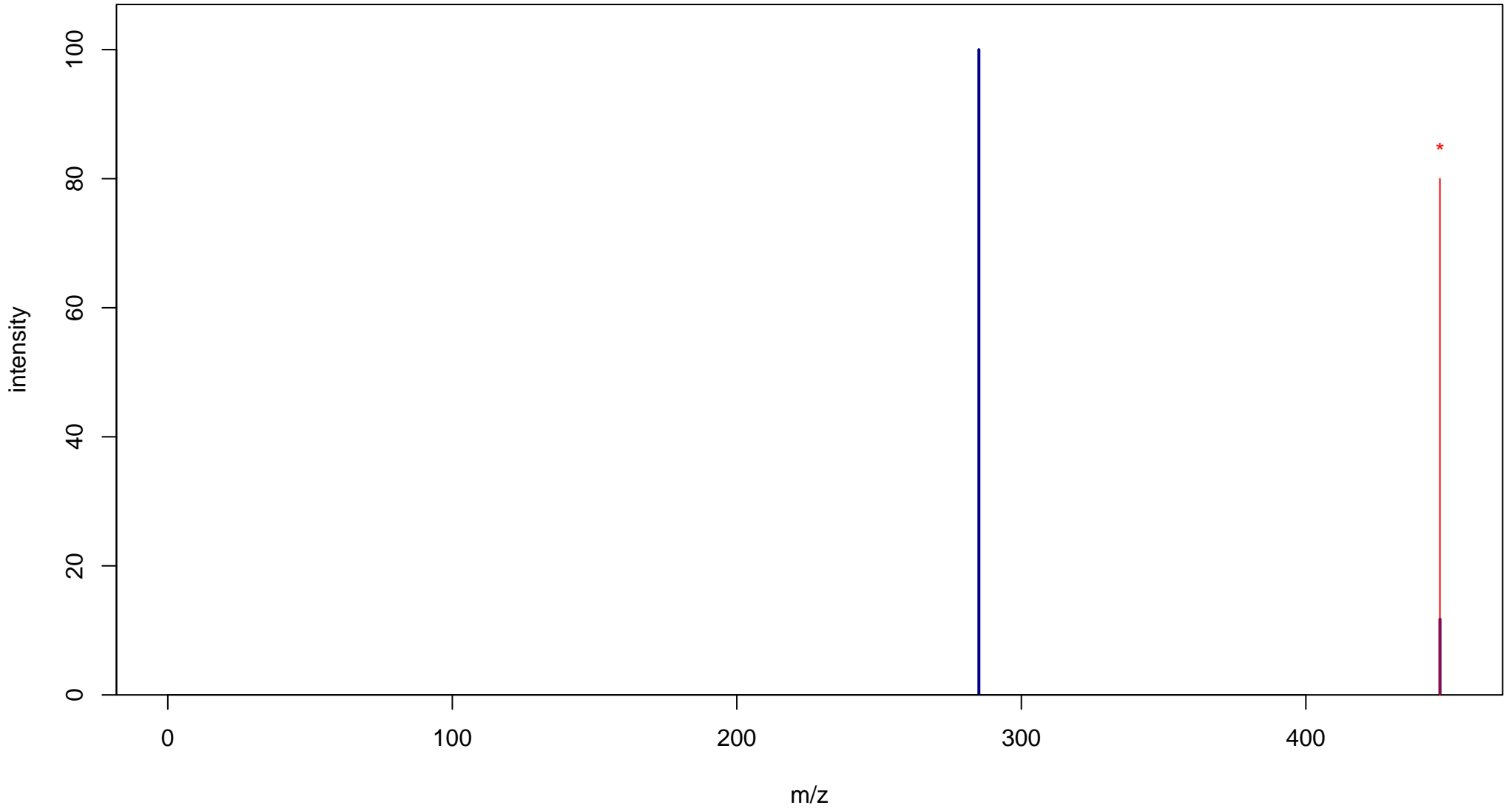
Glycitin

Mass: 446.1213 Formula: C₂₂H₂₂O₁₀

mode: + collisionE: 10V

METLIN ID: 64303 SIGMA Prod: G1296

http://metlin.scripps.edu/metabo_info.php?molid=64303



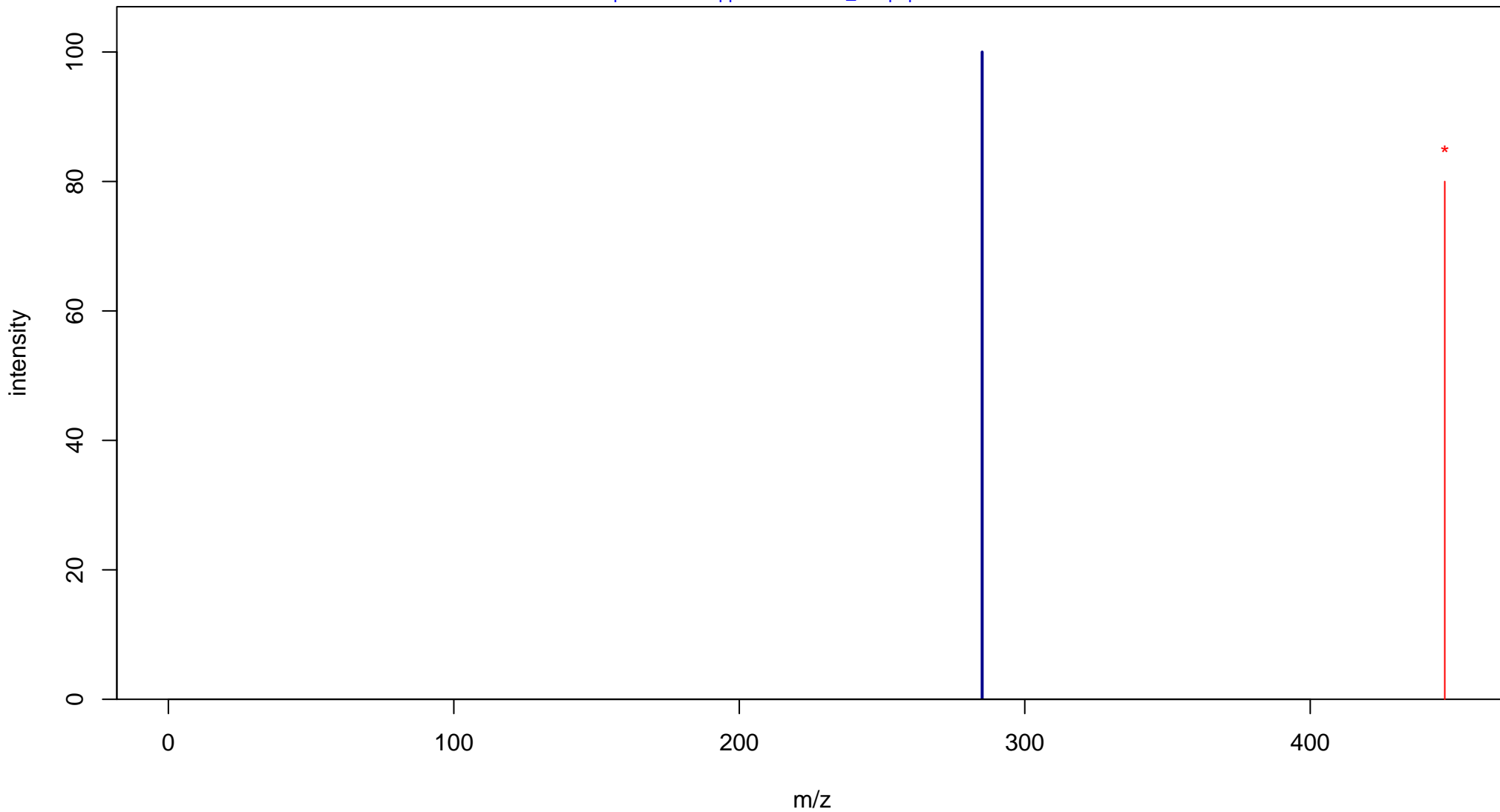
Glycitin

Mass: 446.1213 Formula: C₂₂H₂₂O₁₀

mode: + collisionE: 20V

METLIN ID: 64303 SIGMA Prod: G1296

http://metlin.scripps.edu/metabo_info.php?molid=64303



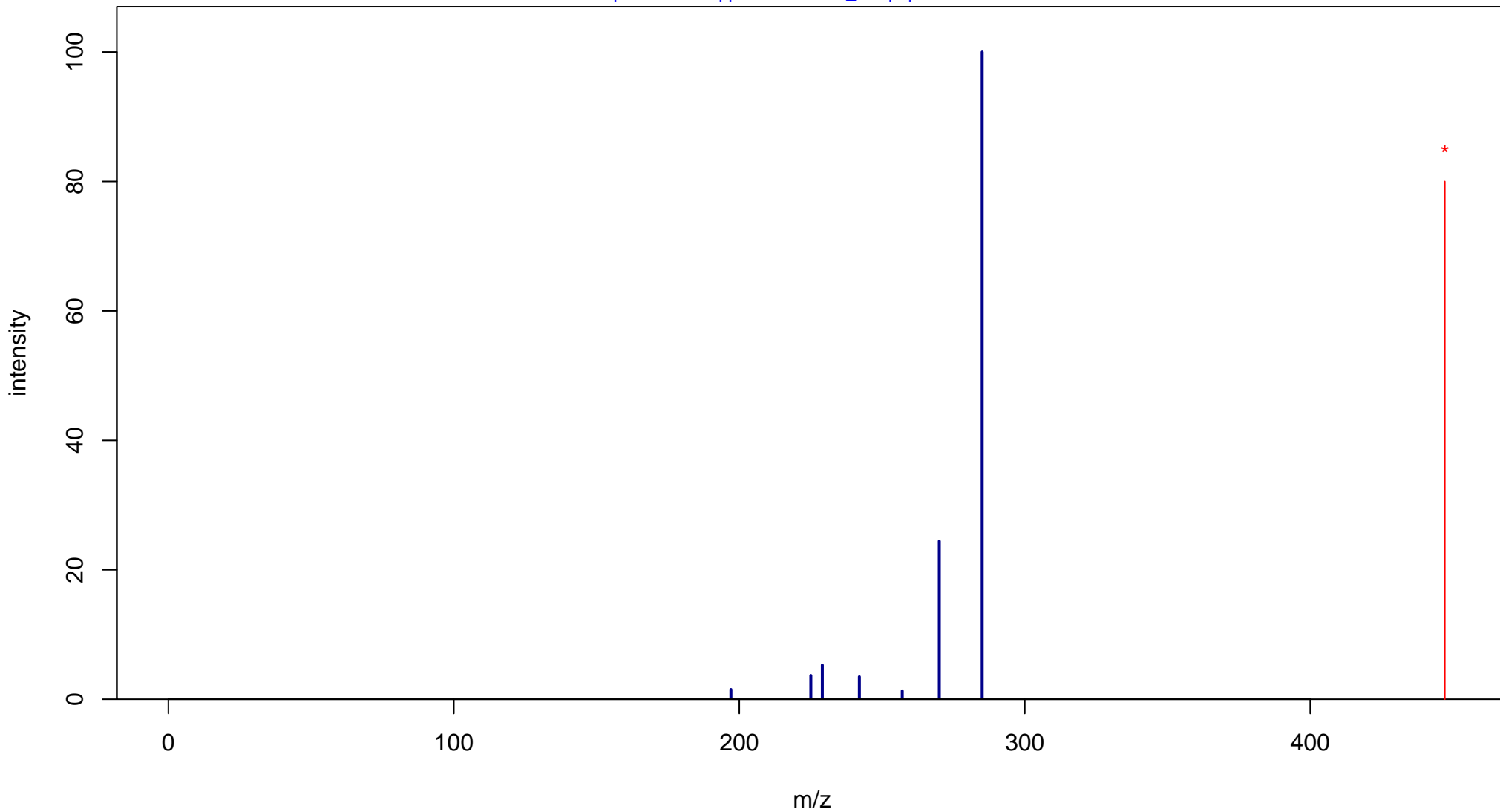
Glycitin

Mass: 446.1213 Formula: C₂₂H₂₂O₁₀

mode: + collisionE: 40V

METLIN ID: 64303 SIGMA Prod: G1296

http://metlin.scripps.edu/metabo_info.php?molid=64303



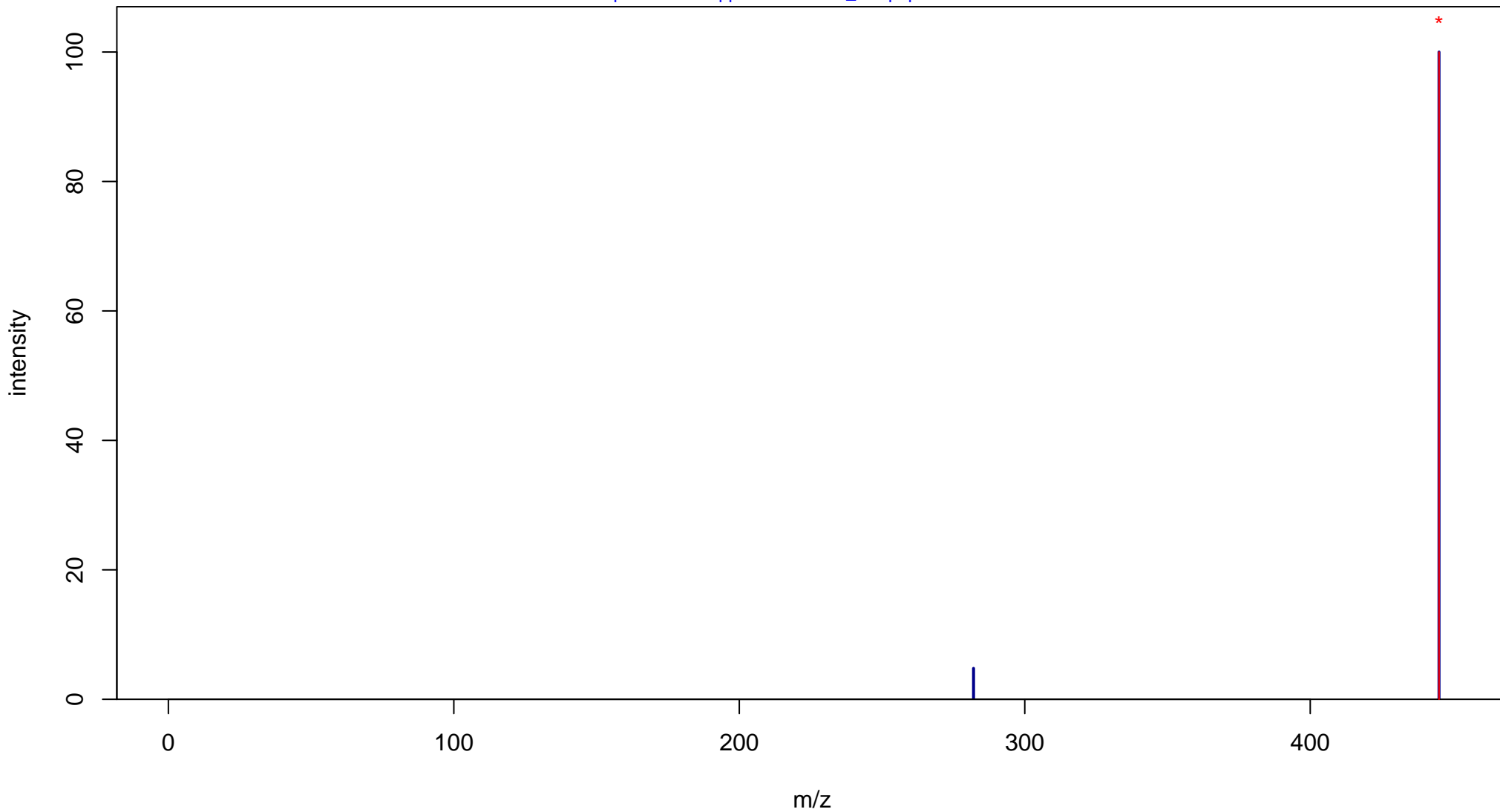
Glycitin

Mass: 446.1213 Formula: C₂₂H₂₂O₁₀

mode: - collisionE: 0V

METLIN ID: 64303 SIGMA Prod: G1296

http://metlin.scripps.edu/metabo_info.php?molid=64303



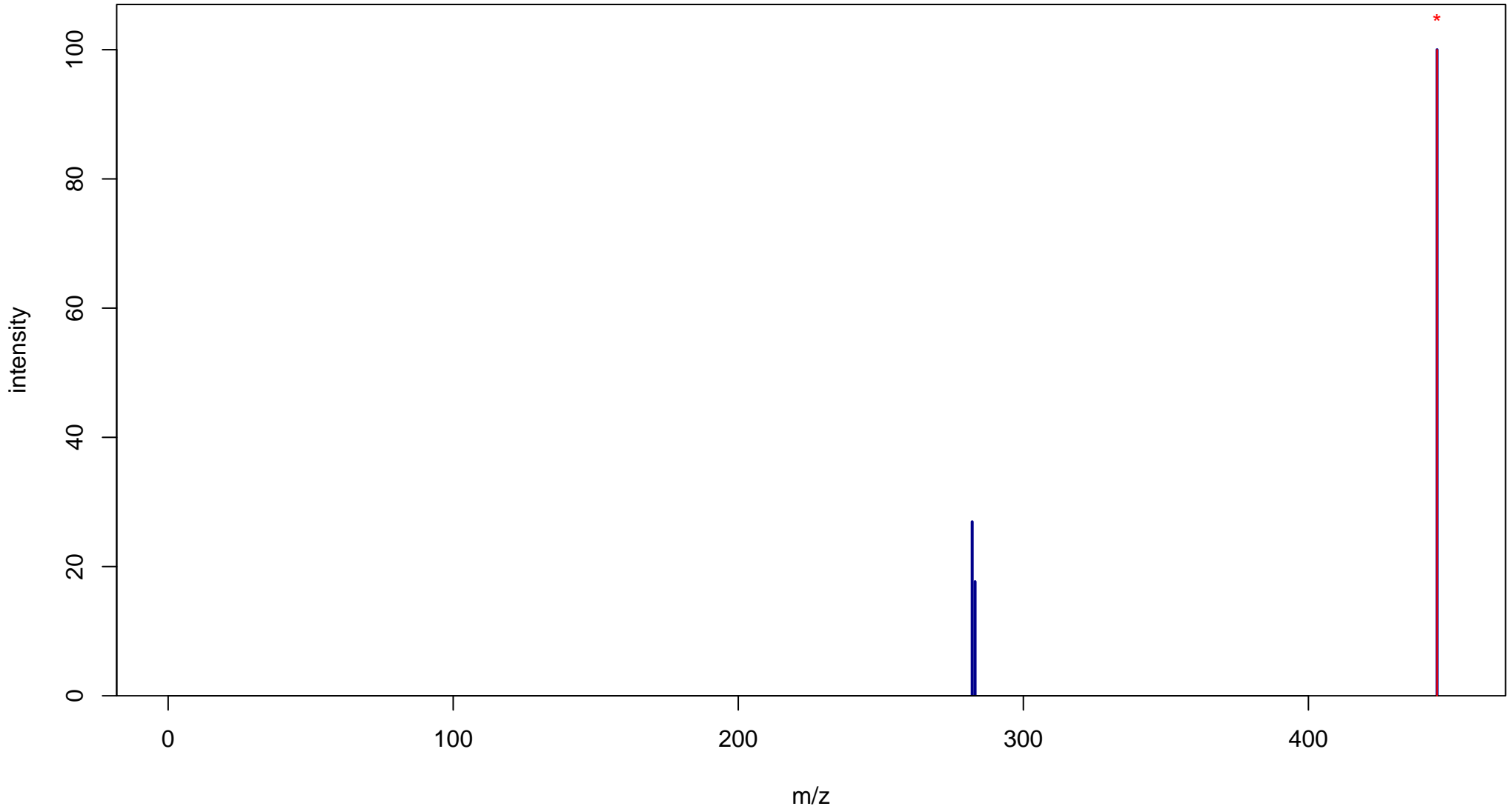
Glycitin

Mass: 446.1213 Formula: C₂₂H₂₂O₁₀

mode: - collisionE: 10V

METLIN ID: 64303 SIGMA Prod: G1296

http://metlin.scripps.edu/metabo_info.php?molid=64303



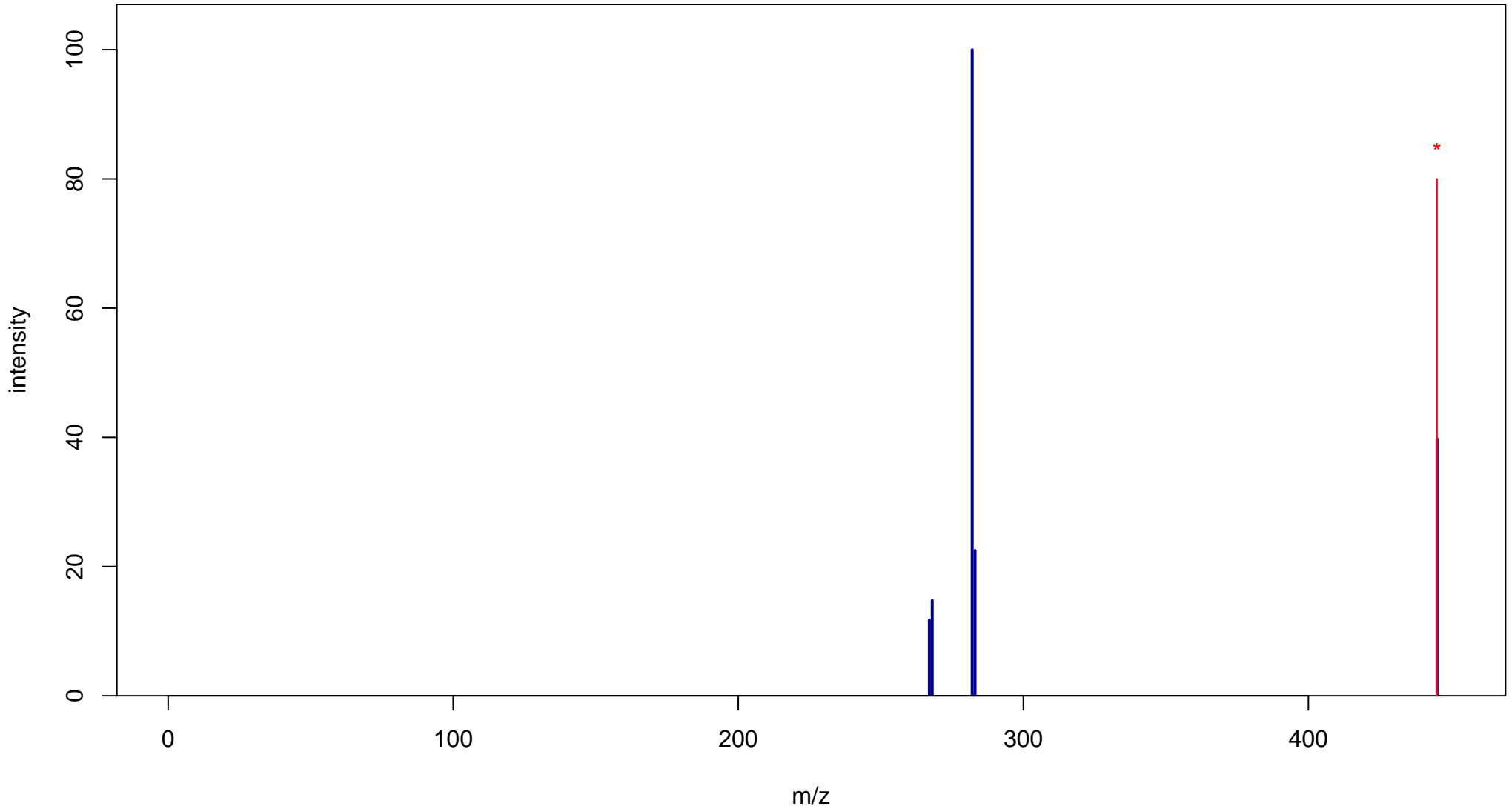
Glycitin

Mass: 446.1213 Formula: C₂₂H₂₂O₁₀

mode: - collisionE: 20V

METLIN ID: 64303 SIGMA Prod: G1296

http://metlin.scripps.edu/metabo_info.php?molid=64303



Glycitin

Mass: 446.1213 Formula: C₂₂H₂₂O₁₀

mode: - collisionE: 40V

METLIN ID: 64303 SIGMA Prod: G1296

http://metlin.scripps.edu/metabo_info.php?molid=64303

