

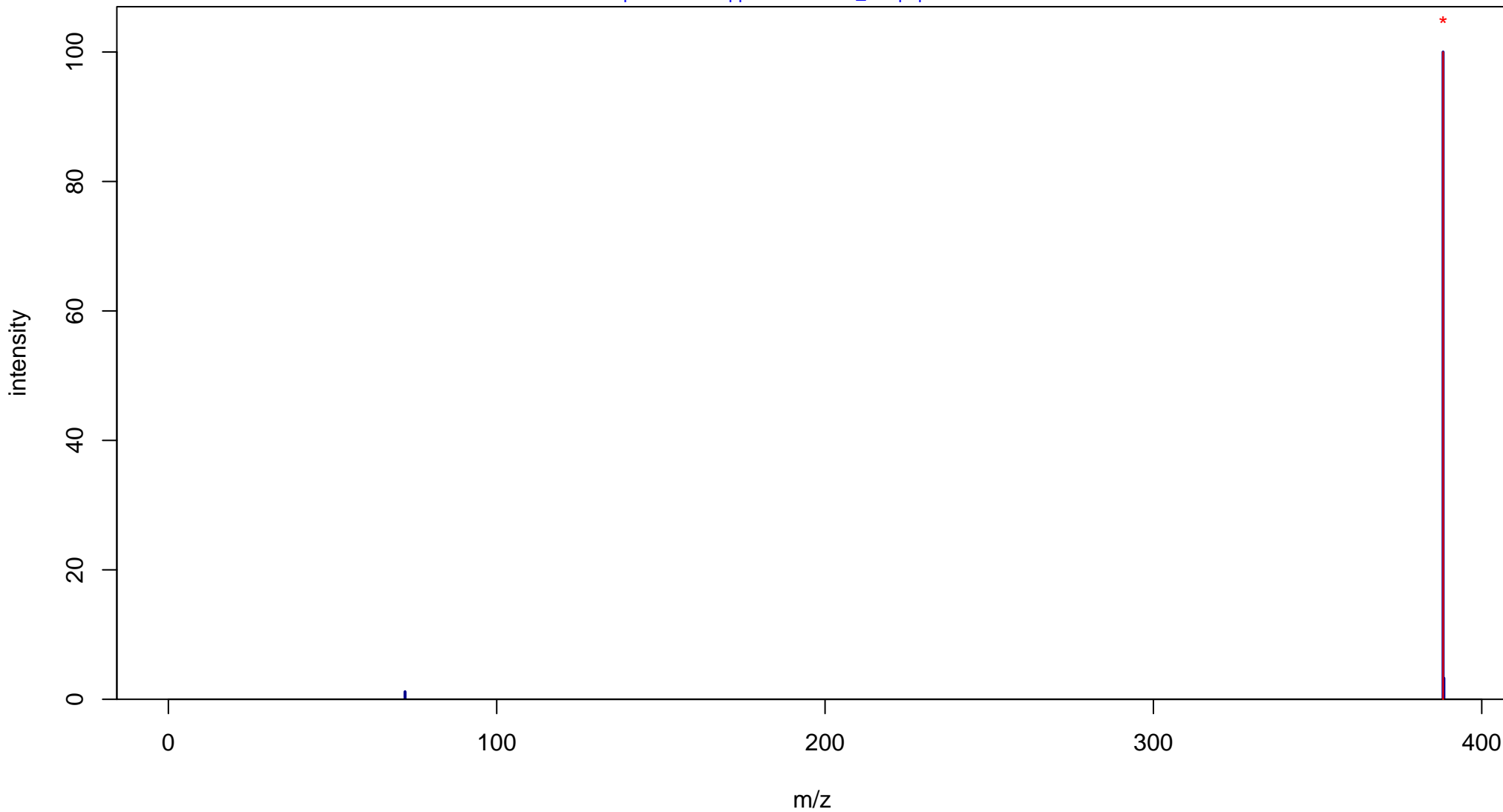
(Z)-4-Hydroxytamoxifen

Mass: 387.2198 Formula: C₂₆H₂₉NO₂

mode: + collisionE: 0V

METLIN ID: 708 SIGMA Prod: H7904

http://metlin.scripps.edu/metabo_info.php?molid=708



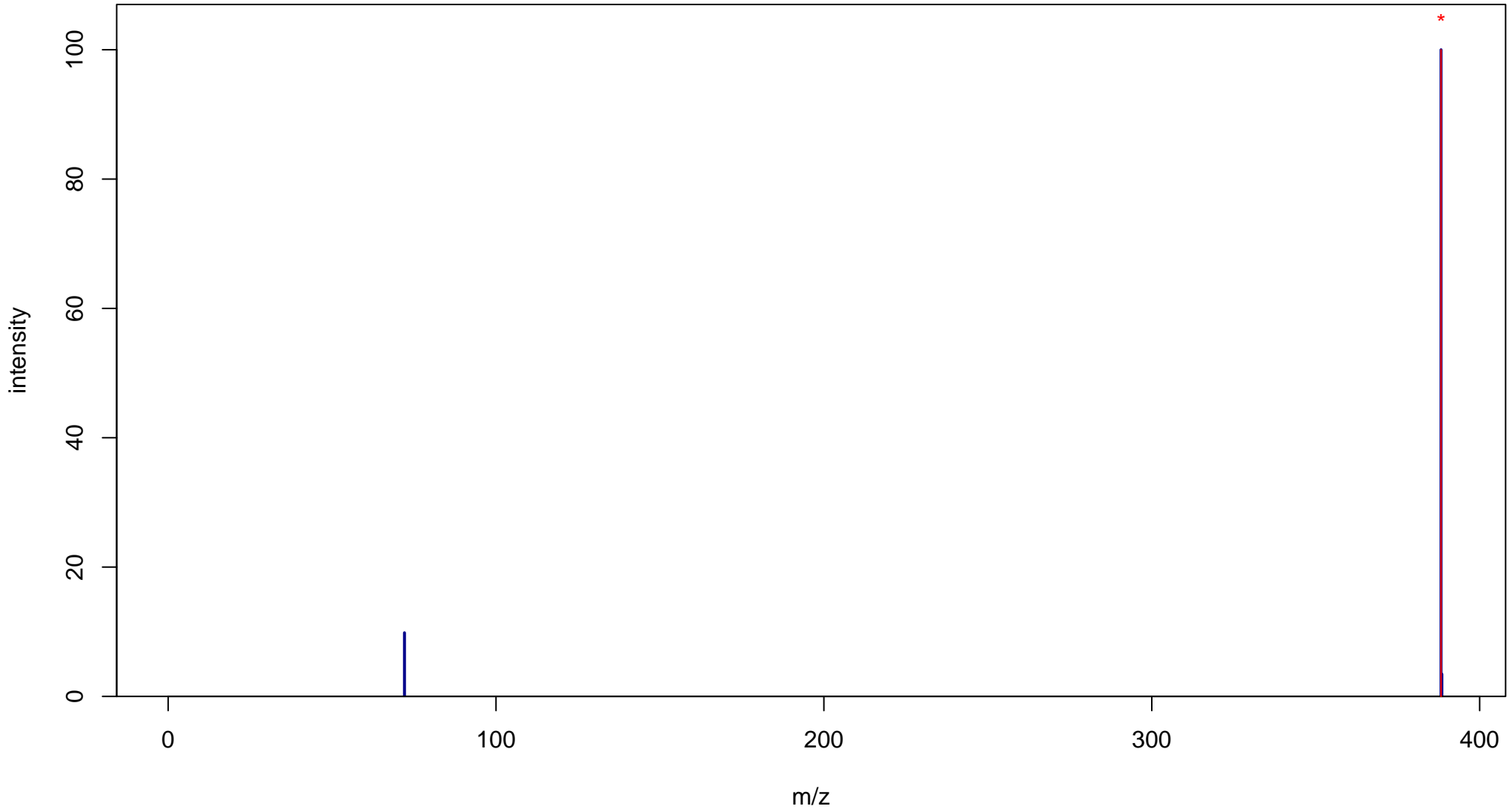
(Z)-4-Hydroxytamoxifen

Mass: 387.2198 Formula: C₂₆H₂₉NO₂

mode: + collisionE: 10V

METLIN ID: 708 SIGMA Prod: H7904

http://metlin.scripps.edu/metabo_info.php?molid=708



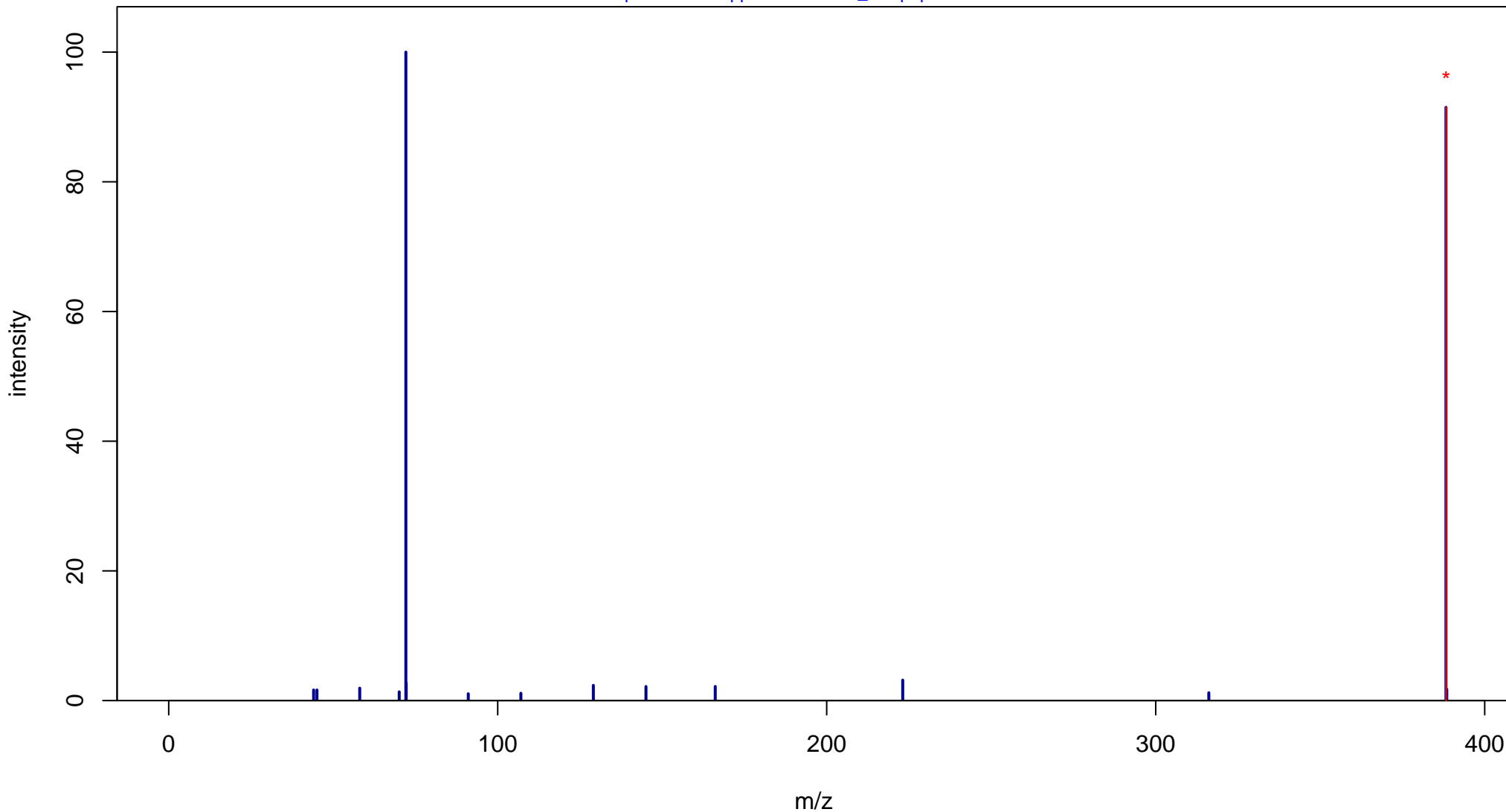
(Z)-4-Hydroxytamoxifen

Mass: 387.2198 Formula: C₂₆H₂₉NO₂

mode: + collisionE: 20V

METLIN ID: 708 SIGMA Prod: H7904

http://metlin.scripps.edu/metabo_info.php?molid=708



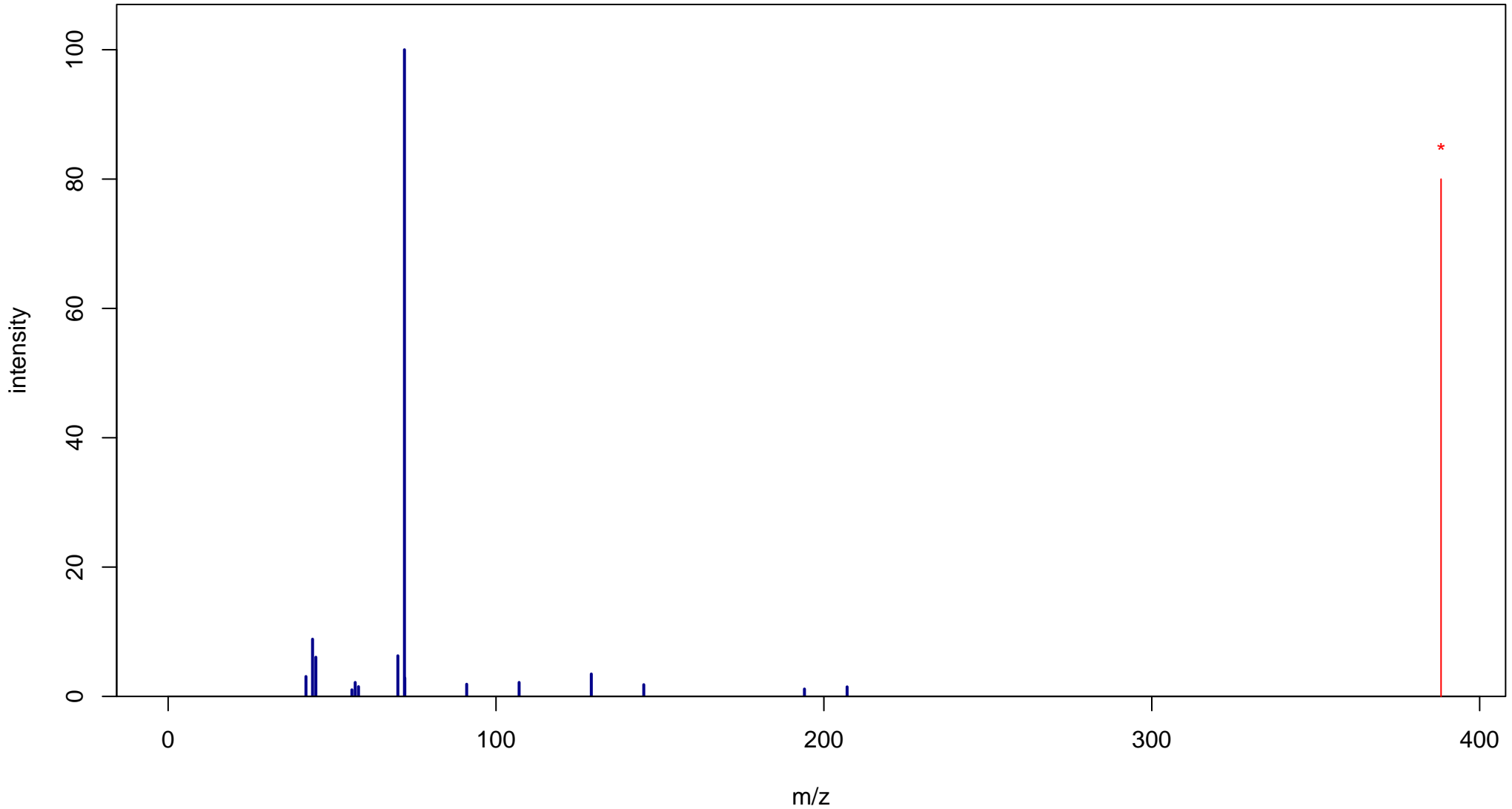
(Z)-4-Hydroxytamoxifen

Mass: 387.2198 Formula: C₂₆H₂₉NO₂

mode: + collisionE: 40V

METLIN ID: 708 SIGMA Prod: H7904

http://metlin.scripps.edu/metabo_info.php?molid=708



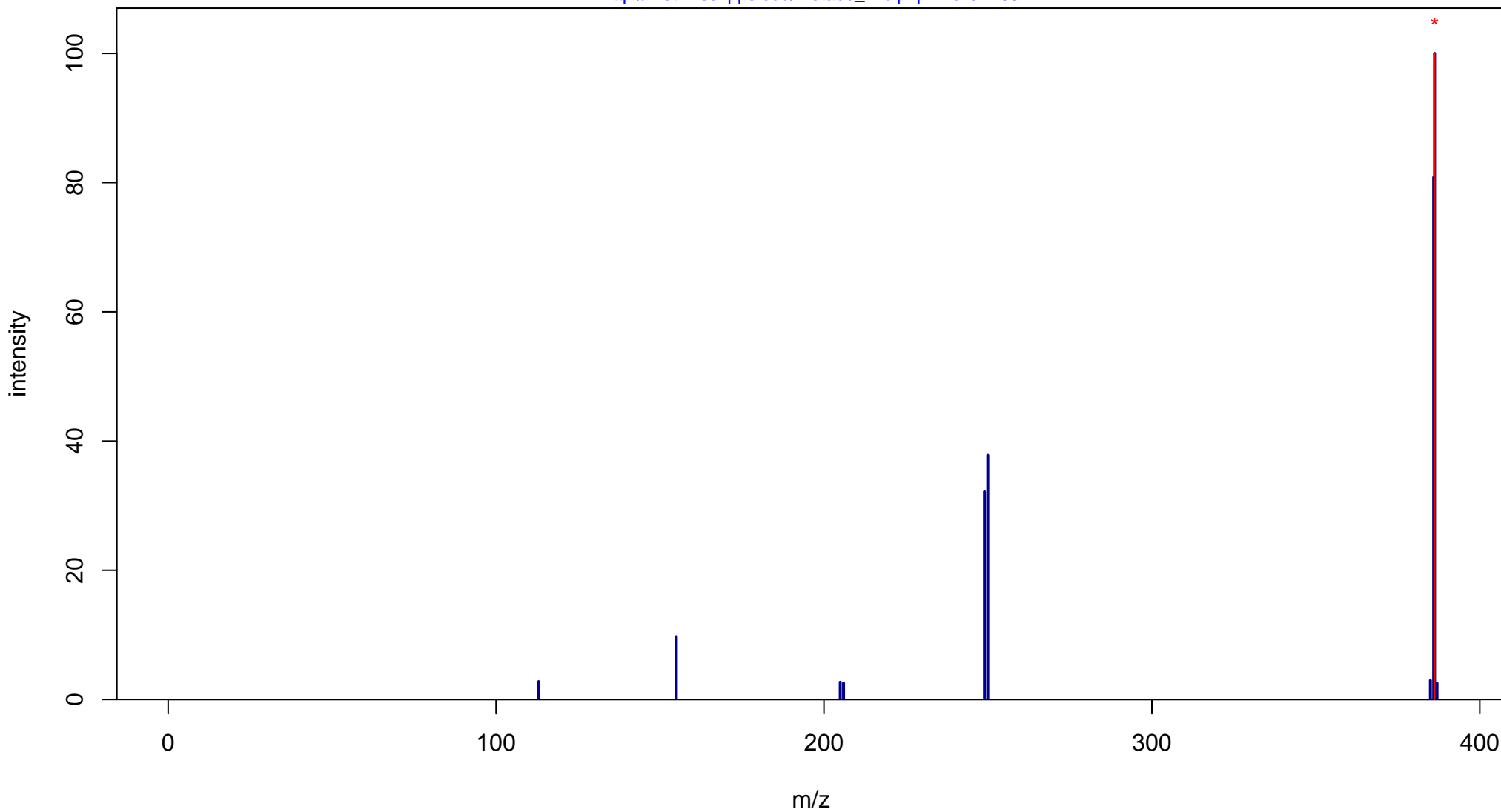
(Z)-4-Hydroxytamoxifen

Mass: 387.2198 Formula: C₂₆H₂₉NO₂

mode: - collisionE: 0V

METLIN ID: 708 SIGMA Prod: H7904

http://metlin.scripps.edu/metabo_info.php?molid=708



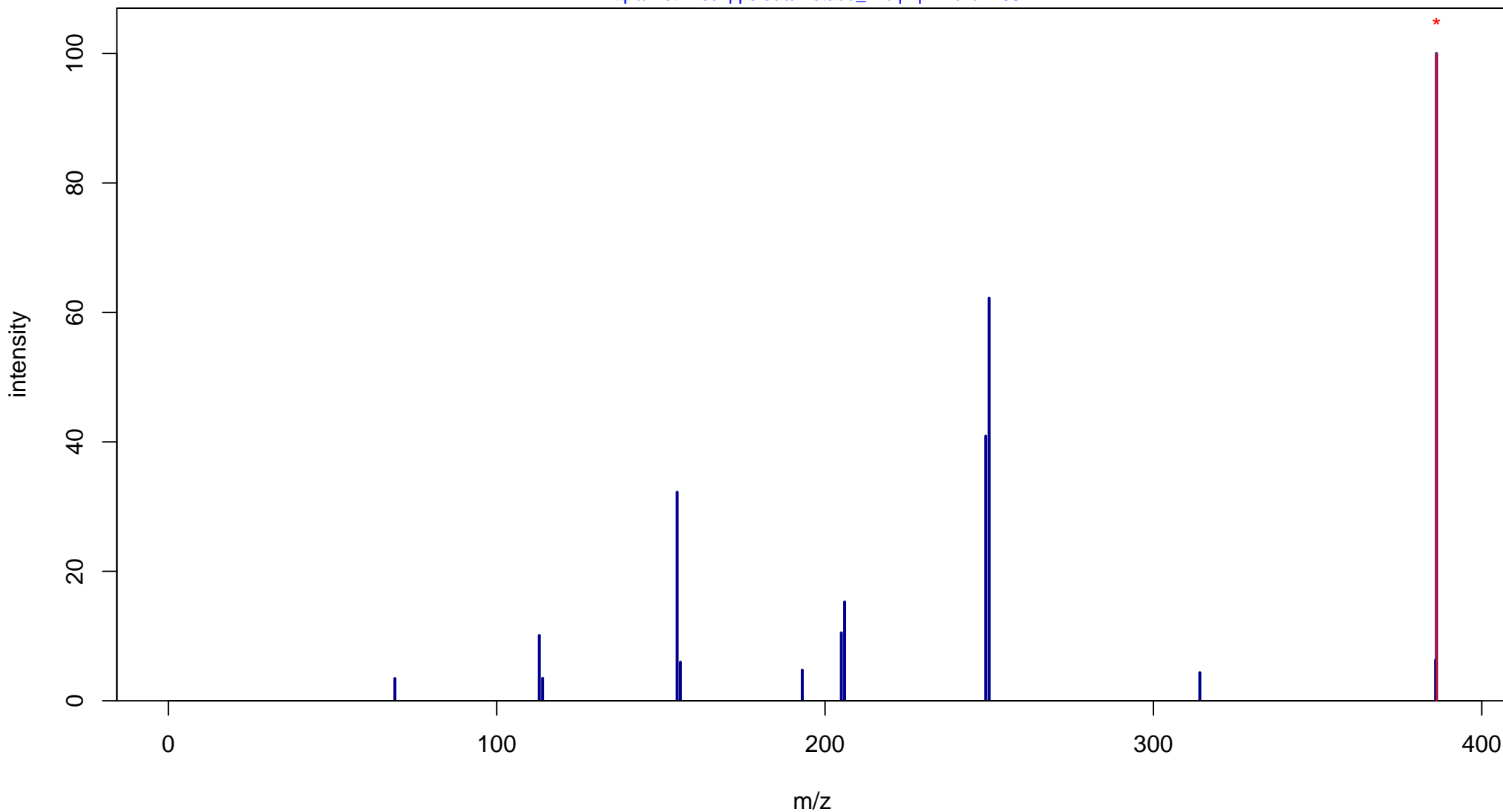
(Z)-4-Hydroxytamoxifen

Mass: 387.2198 Formula: C₂₆H₂₉NO₂

mode: - collisionE: 10V

METLIN ID: 708 SIGMA Prod: H7904

http://metlin.scripps.edu/metabo_info.php?molid=708



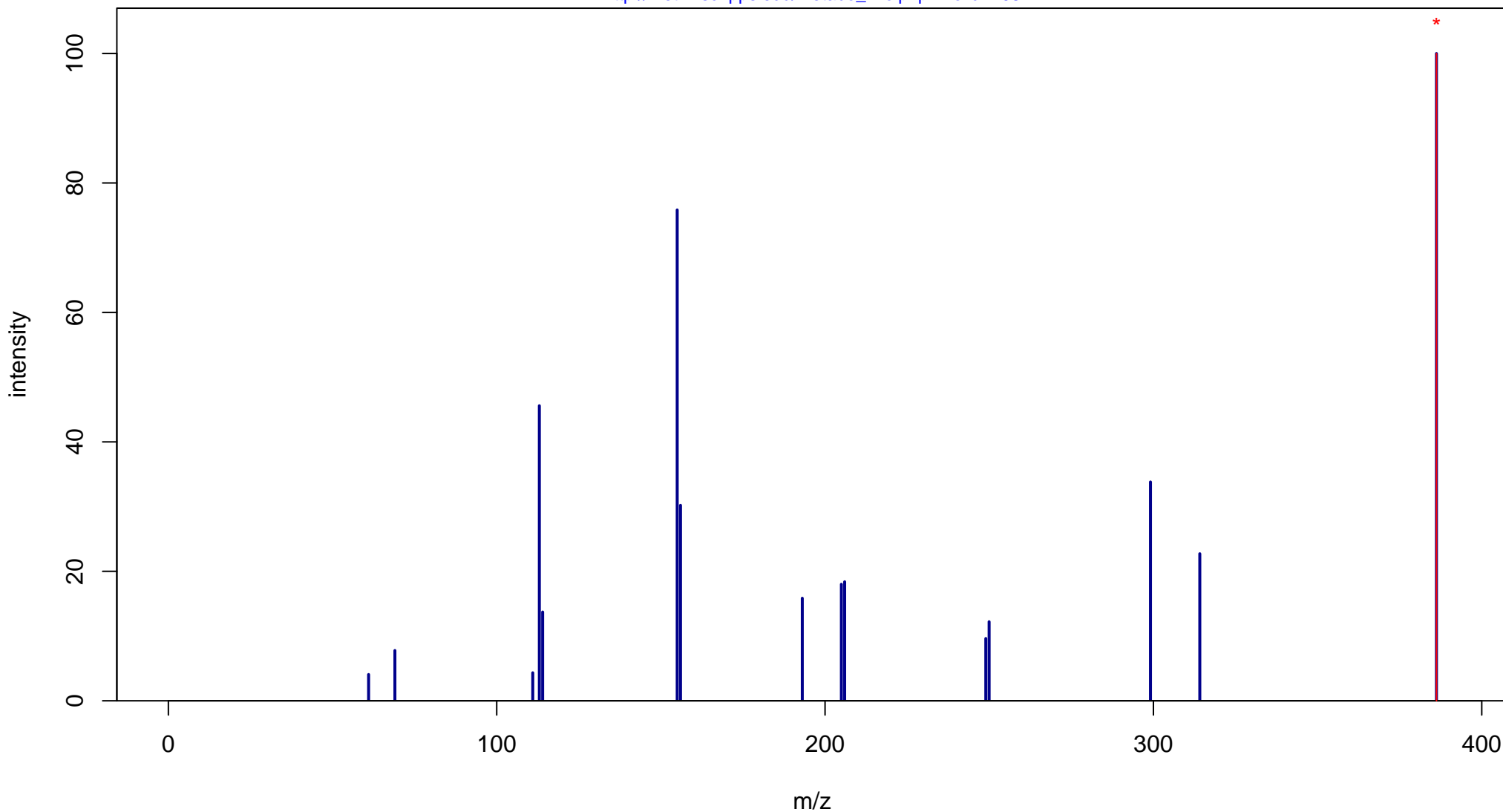
(Z)-4-Hydroxytamoxifen

Mass: 387.2198 Formula: C₂₆H₂₉NO₂

mode: - collisionE: 20V

METLIN ID: 708 SIGMA Prod: H7904

http://metlin.scripps.edu/metabo_info.php?molid=708



(Z)-4-Hydroxytamoxifen

Mass: 387.2198 Formula: C₂₆H₂₉NO₂

mode: - collisionE: 40V

METLIN ID: 708 SIGMA Prod: H7904

http://metlin.scripps.edu/metabo_info.php?molid=708

