

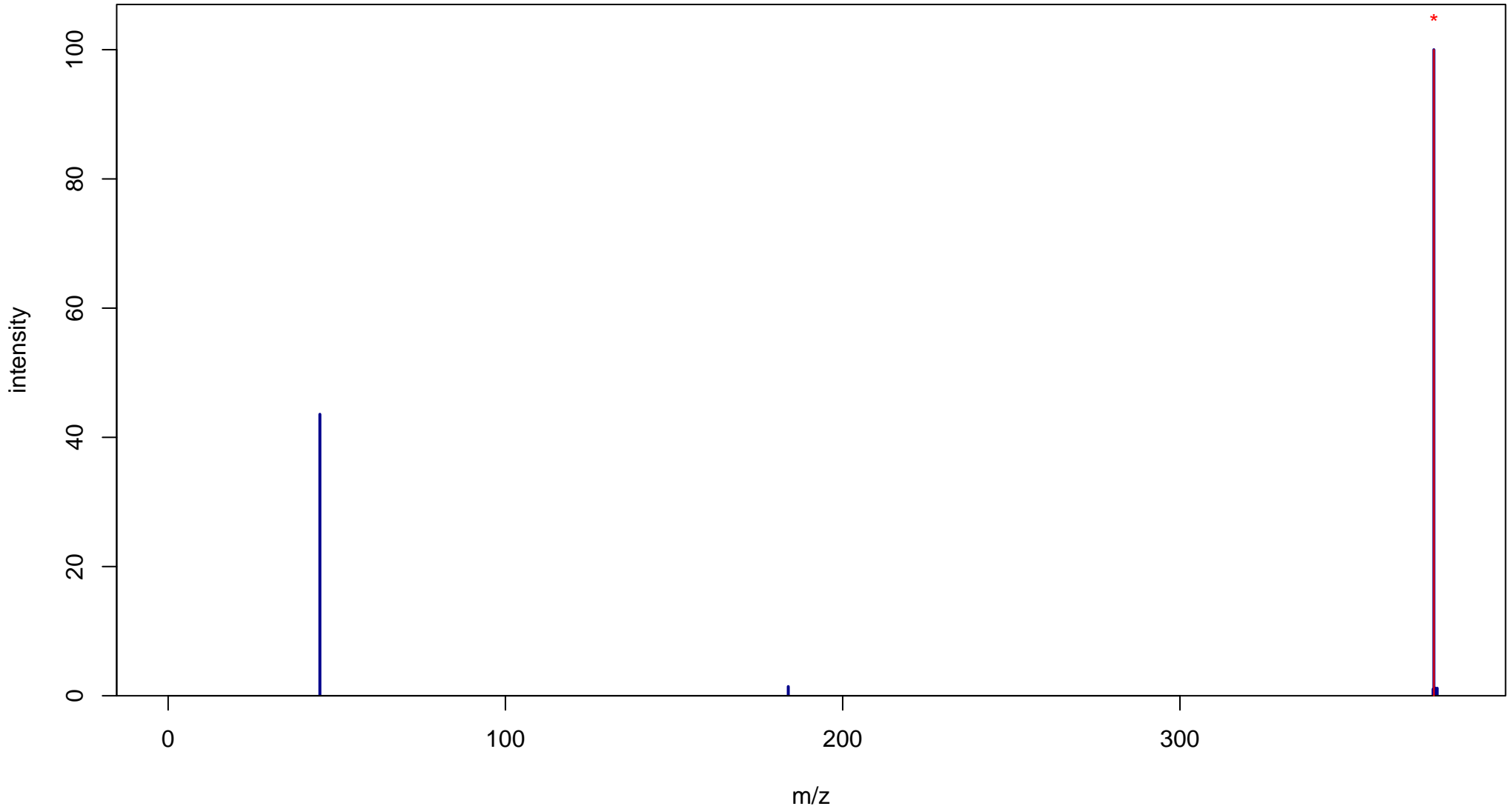
Lithocholic acid

Mass: 376.2977 Formula: C₂₄H₄₀O₃

mode: - collisionE: 0V

METLIN ID: 209 SIGMA Prod: L6250

http://metlin.scripps.edu/metabo_info.php?molid=209



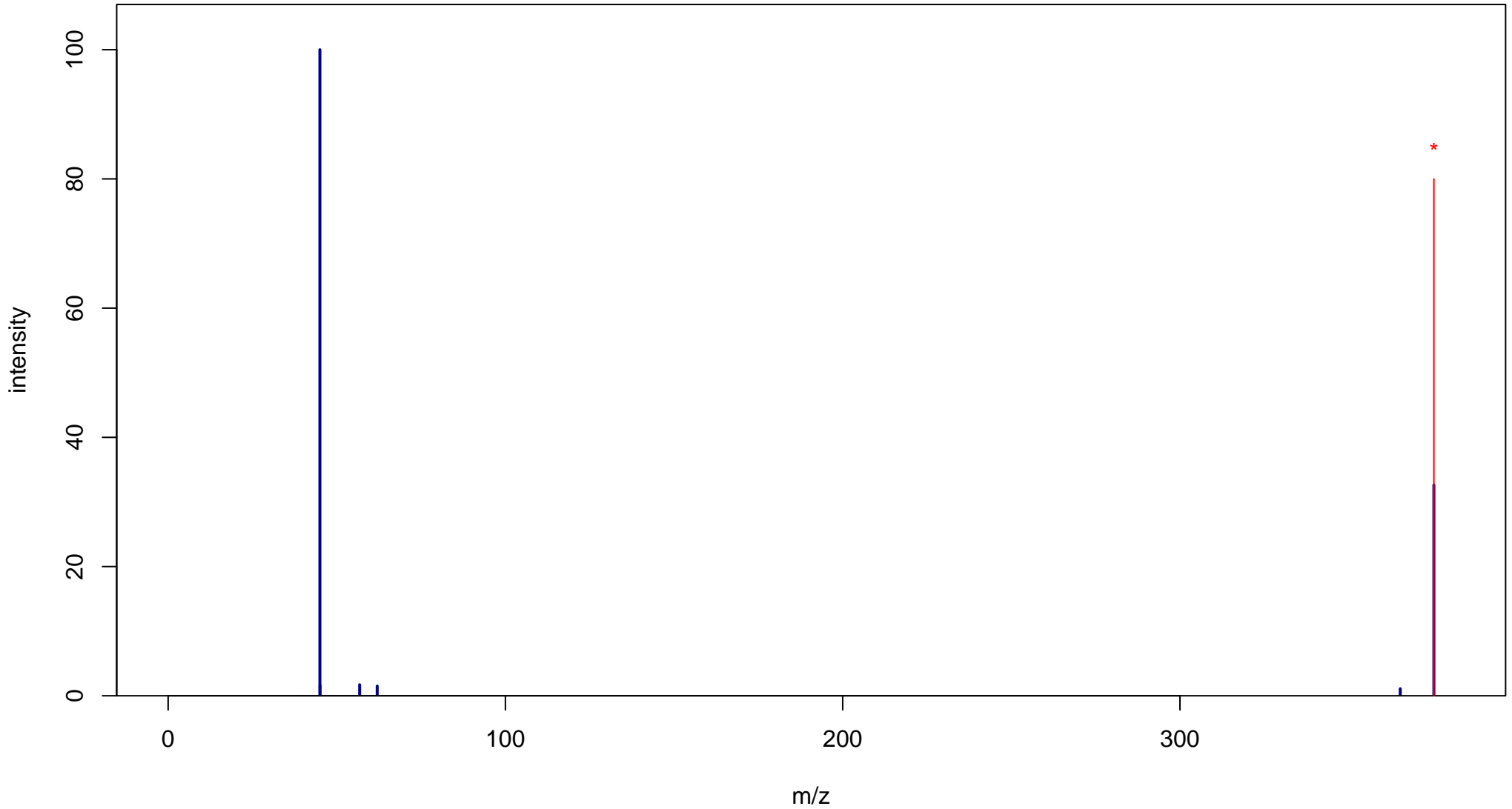
Lithocholic acid

Mass: 376.2977 Formula: C₂₄H₄₀O₃

mode: - collisionE: 10V

METLIN ID: 209 SIGMA Prod: L6250

http://metlin.scripps.edu/metabo_info.php?molid=209



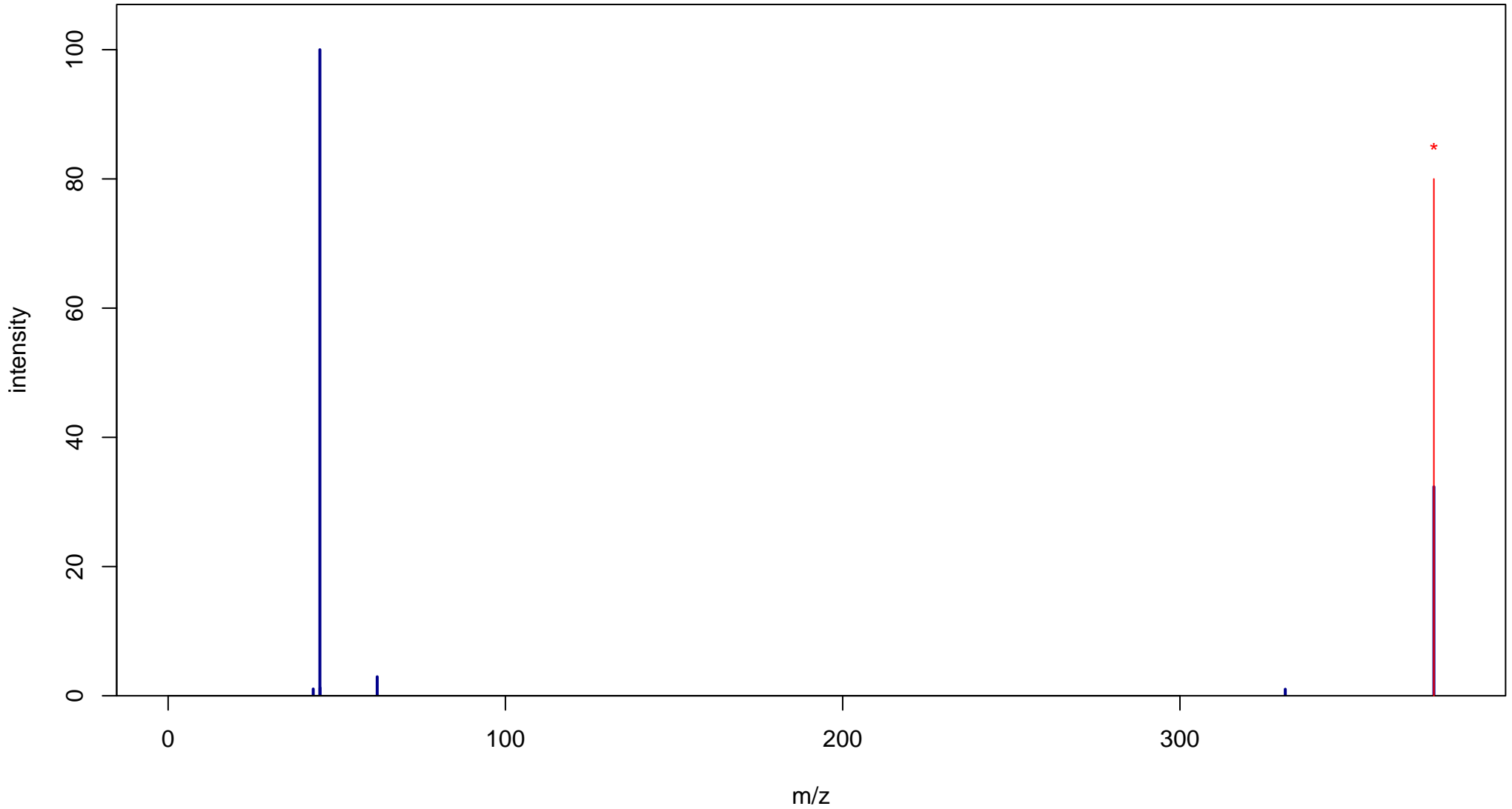
Lithocholic acid

Mass: 376.2977 Formula: C₂₄H₄₀O₃

mode: - collisionE: 20V

METLIN ID: 209 SIGMA Prod: L6250

http://metlin.scripps.edu/metabo_info.php?molid=209



Lithocholic acid

Mass: 376.2977 Formula: C₂₄H₄₀O₃

mode: - collisionE: 40V

METLIN ID: 209 SIGMA Prod: L6250

http://metlin.scripps.edu/metabo_info.php?molid=209

