

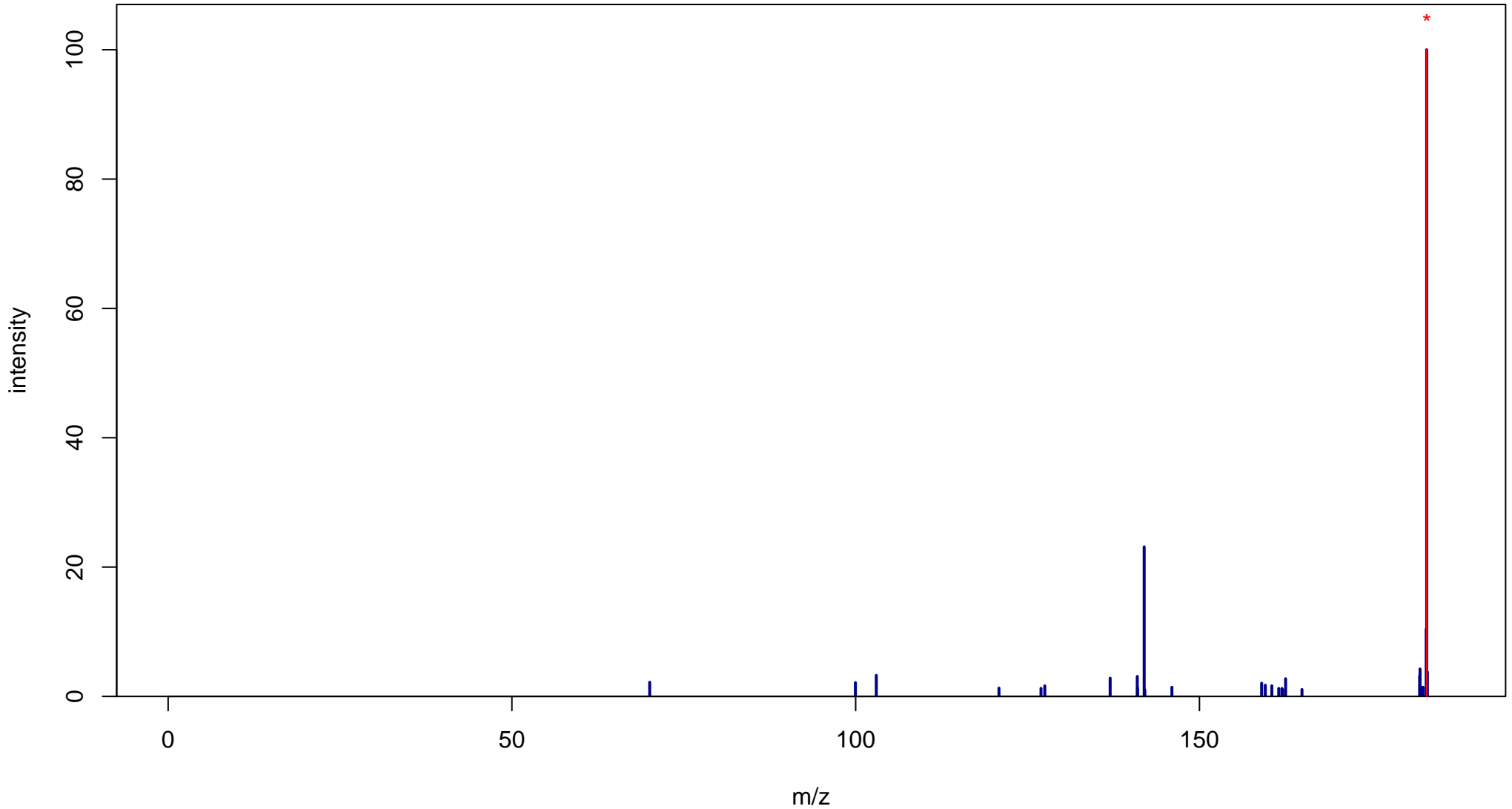
# 1-Methyluric acid

Mass: 182.044 Formula: C<sub>6</sub>H<sub>6</sub>N<sub>4</sub>O<sub>3</sub>

mode: + collisionE: 0V

METLIN ID: 2821 SIGMA Prod: M6885

[http://metlin.scripps.edu/metabo\\_info.php?molid=2821](http://metlin.scripps.edu/metabo_info.php?molid=2821)



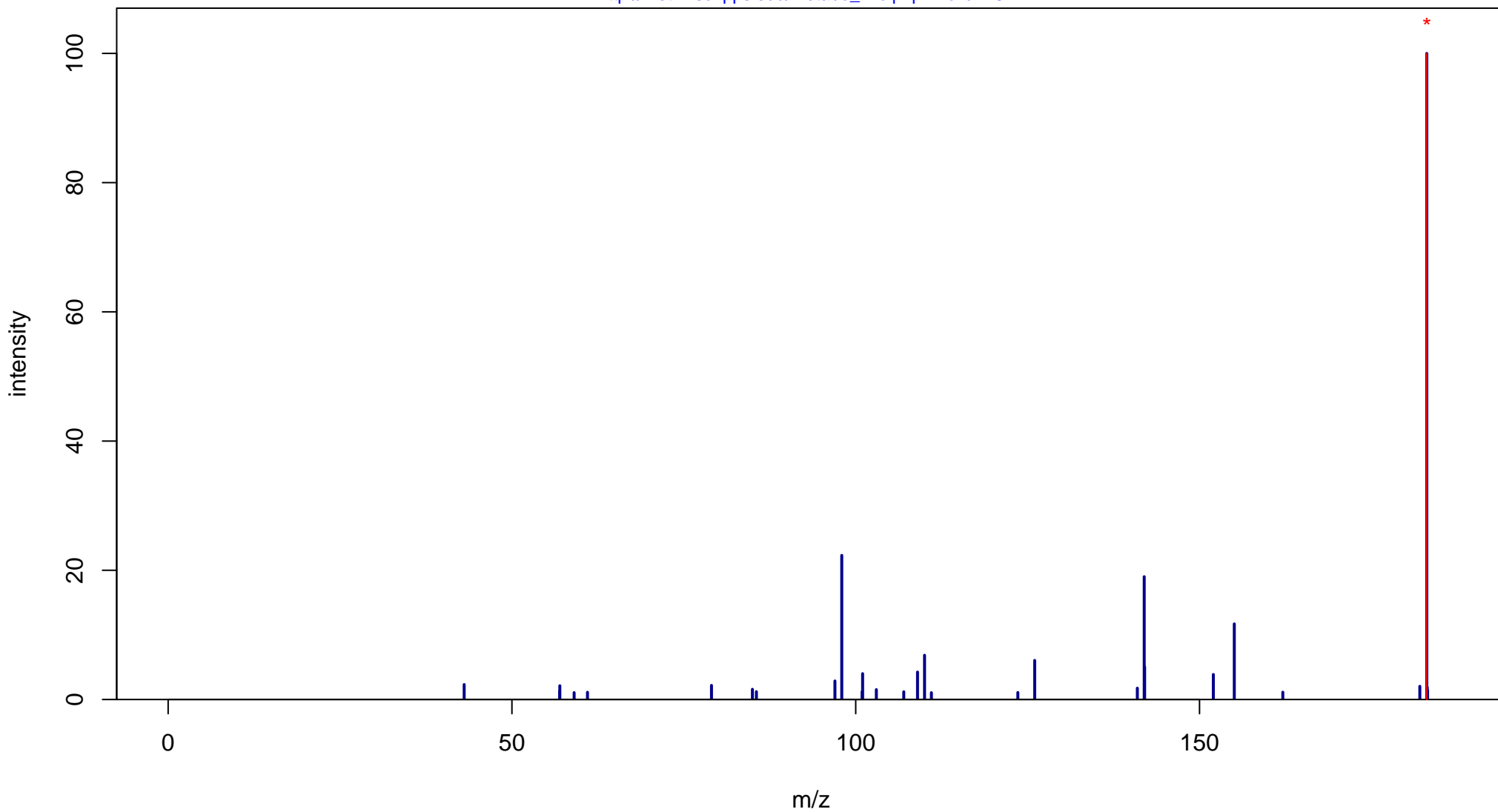
# 1-Methyluric acid

Mass: 182.044 Formula: C<sub>6</sub>H<sub>6</sub>N<sub>4</sub>O<sub>3</sub>

mode: + collisionE: 10V

METLIN ID: 2821 SIGMA Prod: M6885

[http://metlin.scripps.edu/metabo\\_info.php?molid=2821](http://metlin.scripps.edu/metabo_info.php?molid=2821)



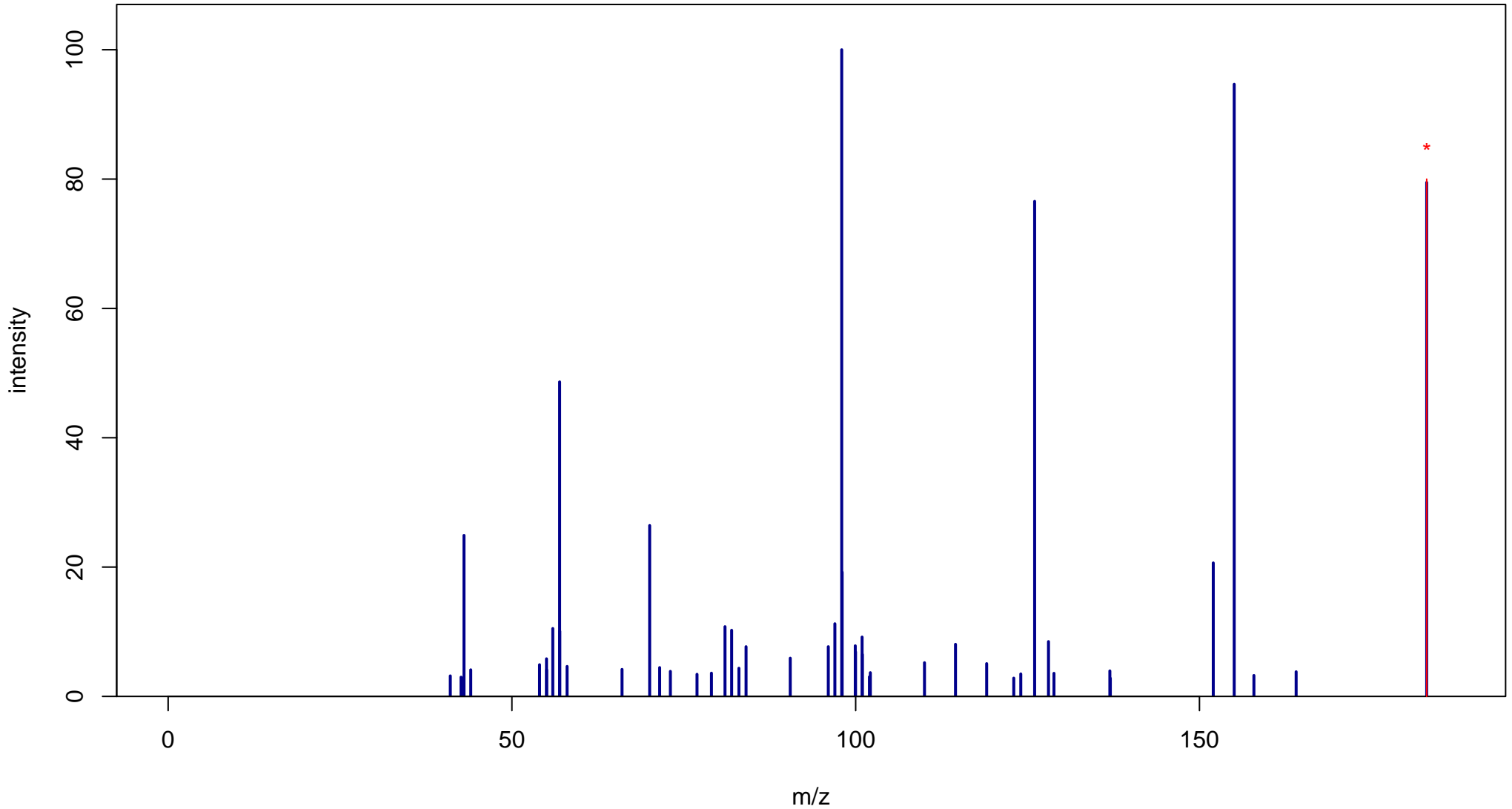
# 1-Methyluric acid

Mass: 182.044 Formula: C<sub>6</sub>H<sub>6</sub>N<sub>4</sub>O<sub>3</sub>

mode: + collisionE: 20V

METLIN ID: 2821 SIGMA Prod: M6885

[http://metlin.scripps.edu/metabo\\_info.php?molid=2821](http://metlin.scripps.edu/metabo_info.php?molid=2821)



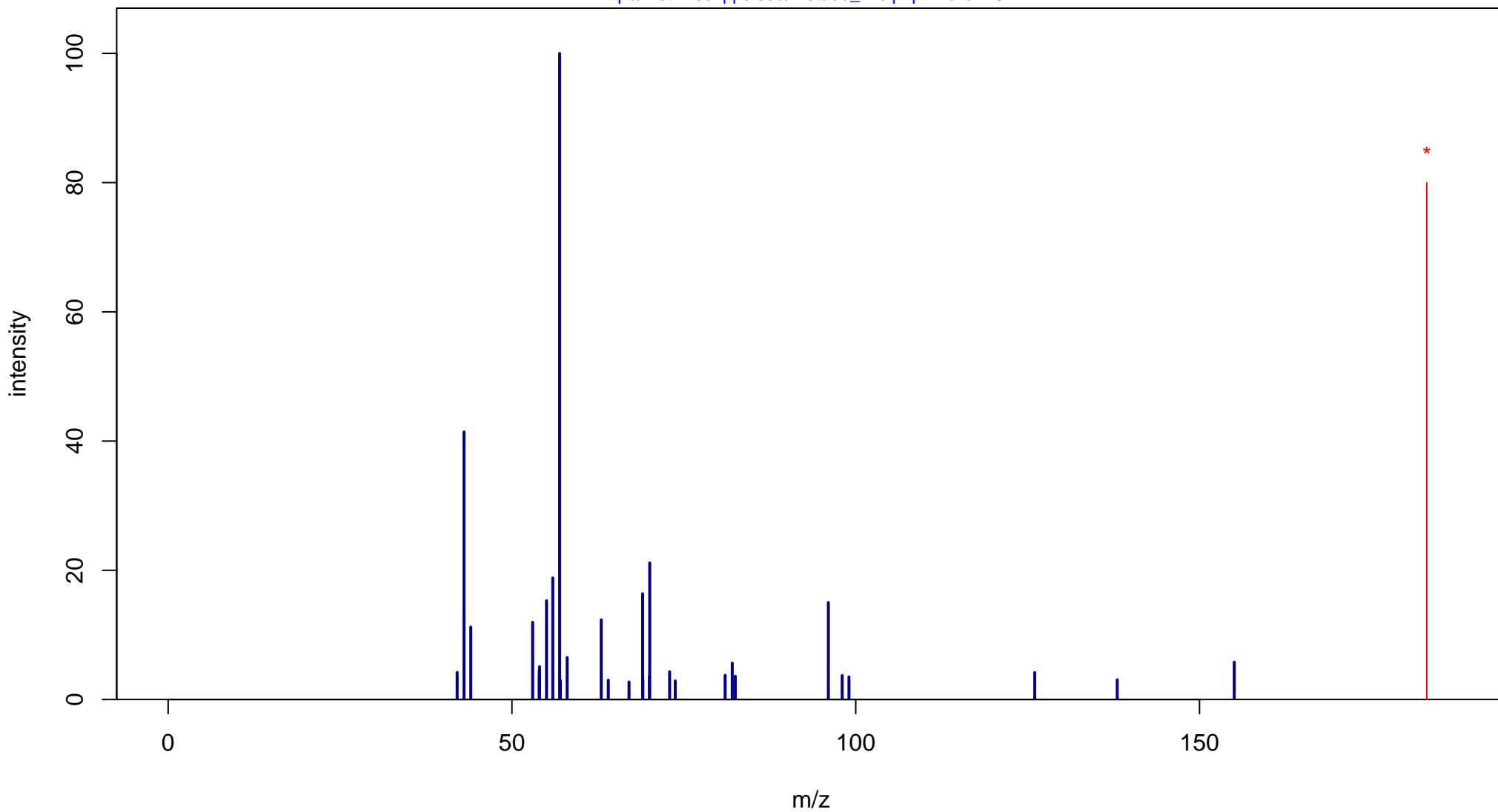
# 1-Methyluric acid

Mass: 182.044 Formula: C<sub>6</sub>H<sub>6</sub>N<sub>4</sub>O<sub>3</sub>

mode: + collisionE: 40V

METLIN ID: 2821 SIGMA Prod: M6885

[http://metlin.scripps.edu/metabo\\_info.php?molid=2821](http://metlin.scripps.edu/metabo_info.php?molid=2821)



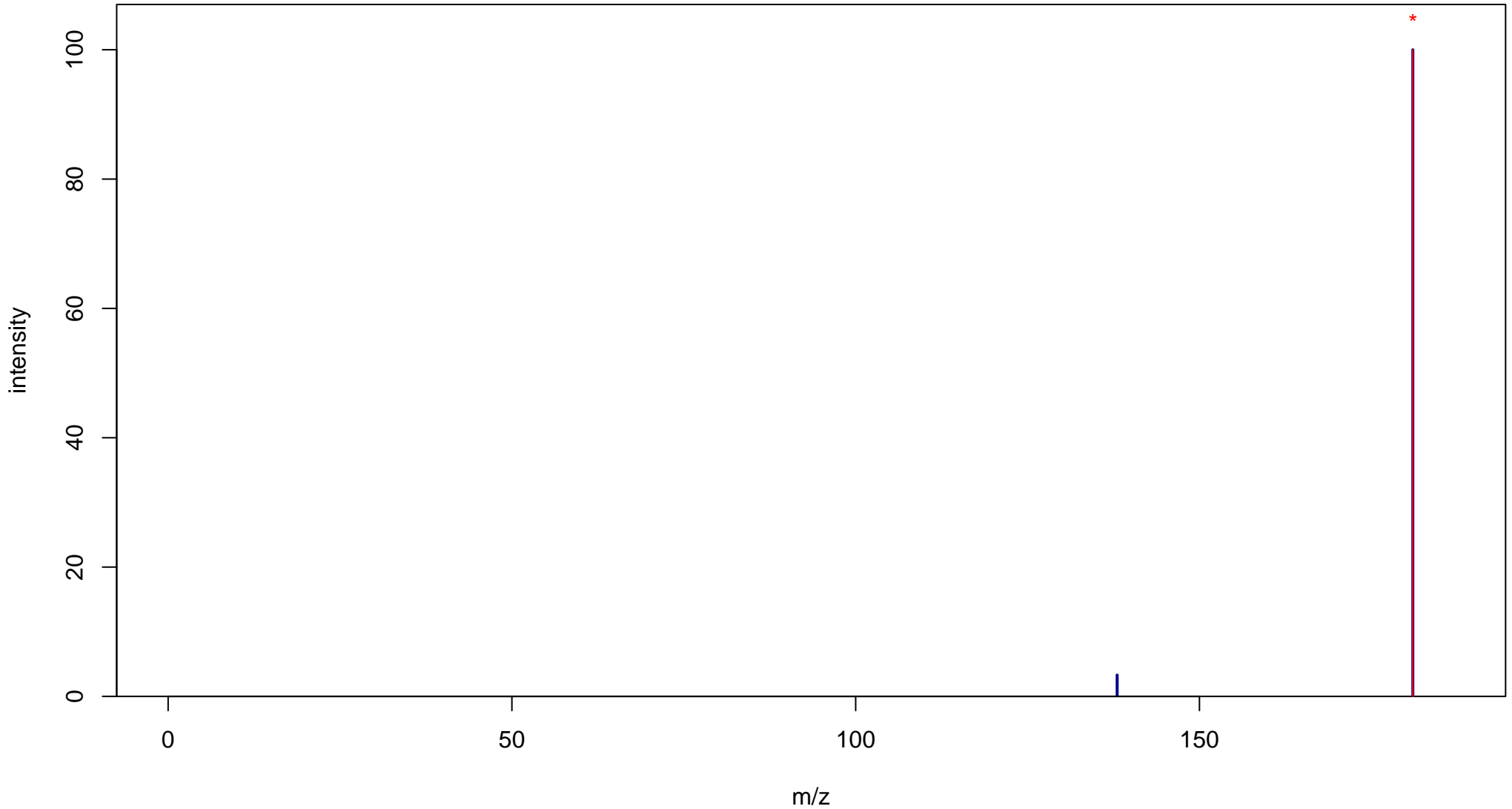
# 1-Methyluric acid

Mass: 182.044 Formula: C<sub>6</sub>H<sub>6</sub>N<sub>4</sub>O<sub>3</sub>

mode: - collisionE: 0V

METLIN ID: 2821 SIGMA Prod: M6885

[http://metlin.scripps.edu/metabo\\_info.php?molid=2821](http://metlin.scripps.edu/metabo_info.php?molid=2821)



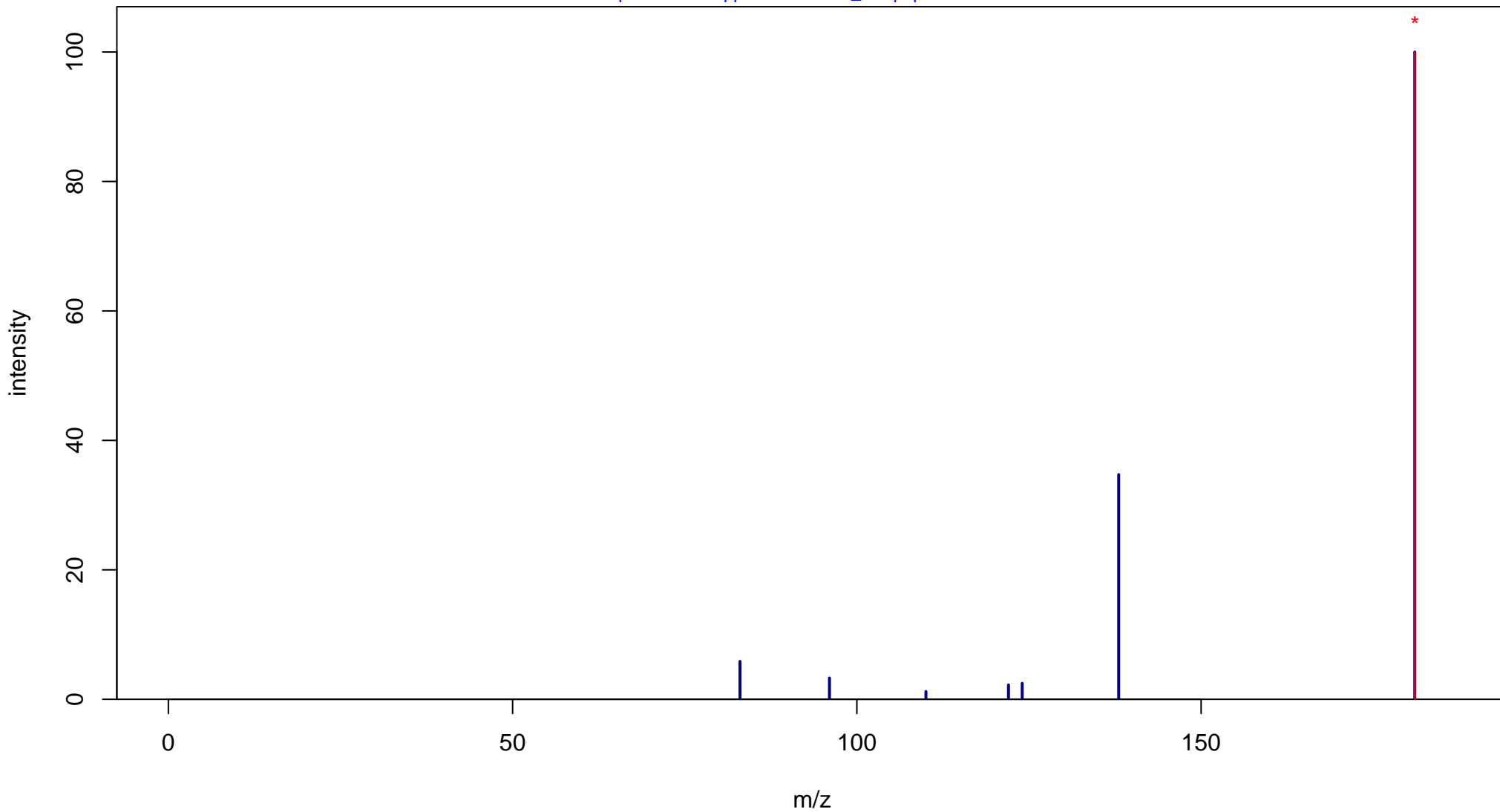
# 1-Methyluric acid

Mass: 182.044 Formula: C<sub>6</sub>H<sub>6</sub>N<sub>4</sub>O<sub>3</sub>

mode: - collisionE: 10V

METLIN ID: 2821 SIGMA Prod: M6885

[http://metlin.scripps.edu/metabo\\_info.php?molid=2821](http://metlin.scripps.edu/metabo_info.php?molid=2821)



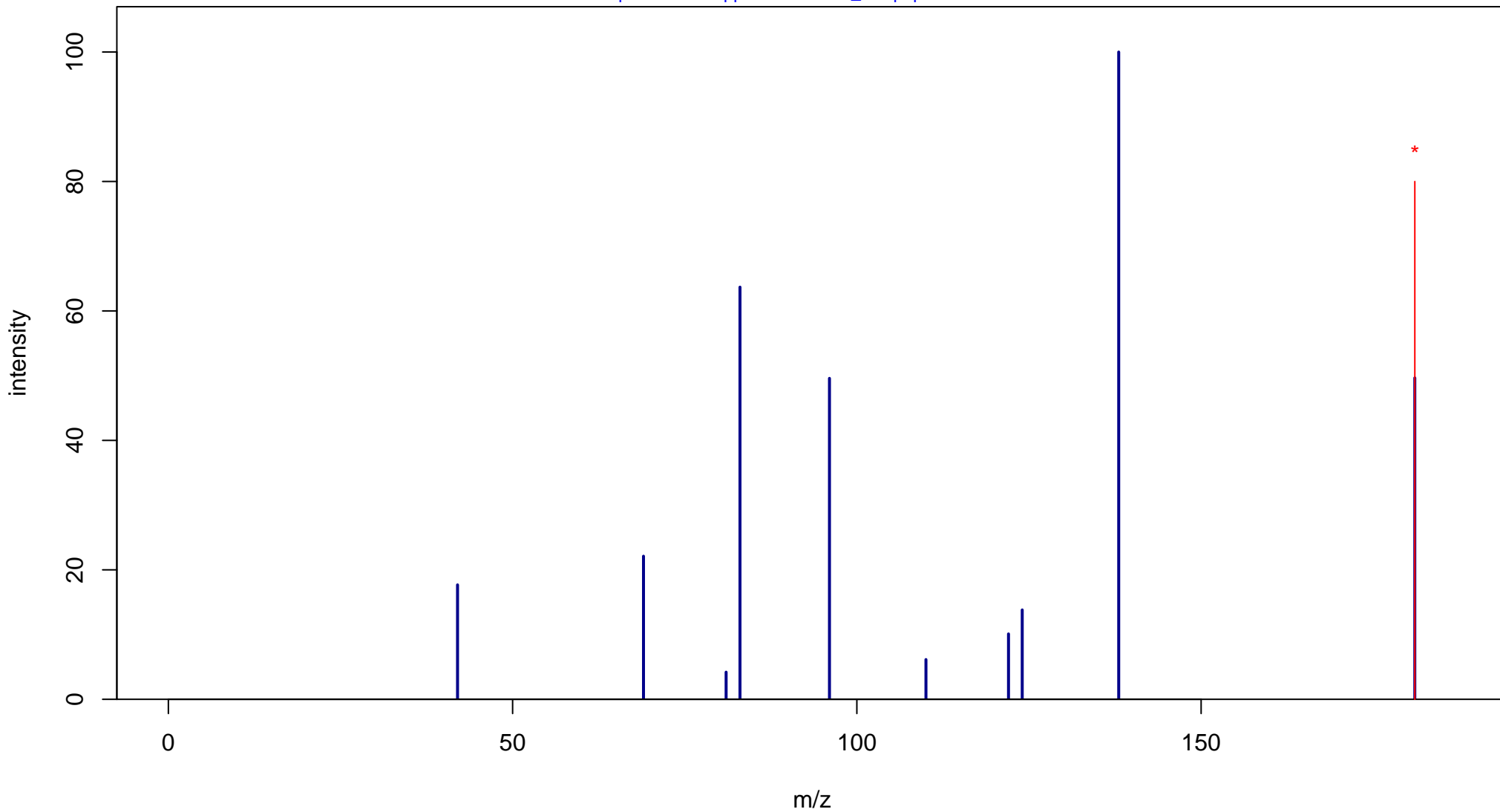
# 1-Methyluric acid

Mass: 182.044 Formula: C<sub>6</sub>H<sub>6</sub>N<sub>4</sub>O<sub>3</sub>

mode: - collisionE: 20V

METLIN ID: 2821 SIGMA Prod: M6885

[http://metlin.scripps.edu/metabo\\_info.php?molid=2821](http://metlin.scripps.edu/metabo_info.php?molid=2821)



# 1-Methyluric acid

Mass: 182.044 Formula: C<sub>6</sub>H<sub>6</sub>N<sub>4</sub>O<sub>3</sub>

mode: - collisionE: 40V

METLIN ID: 2821 SIGMA Prod: M6885

[http://metlin.scripps.edu/metabo\\_info.php?molid=2821](http://metlin.scripps.edu/metabo_info.php?molid=2821)

