

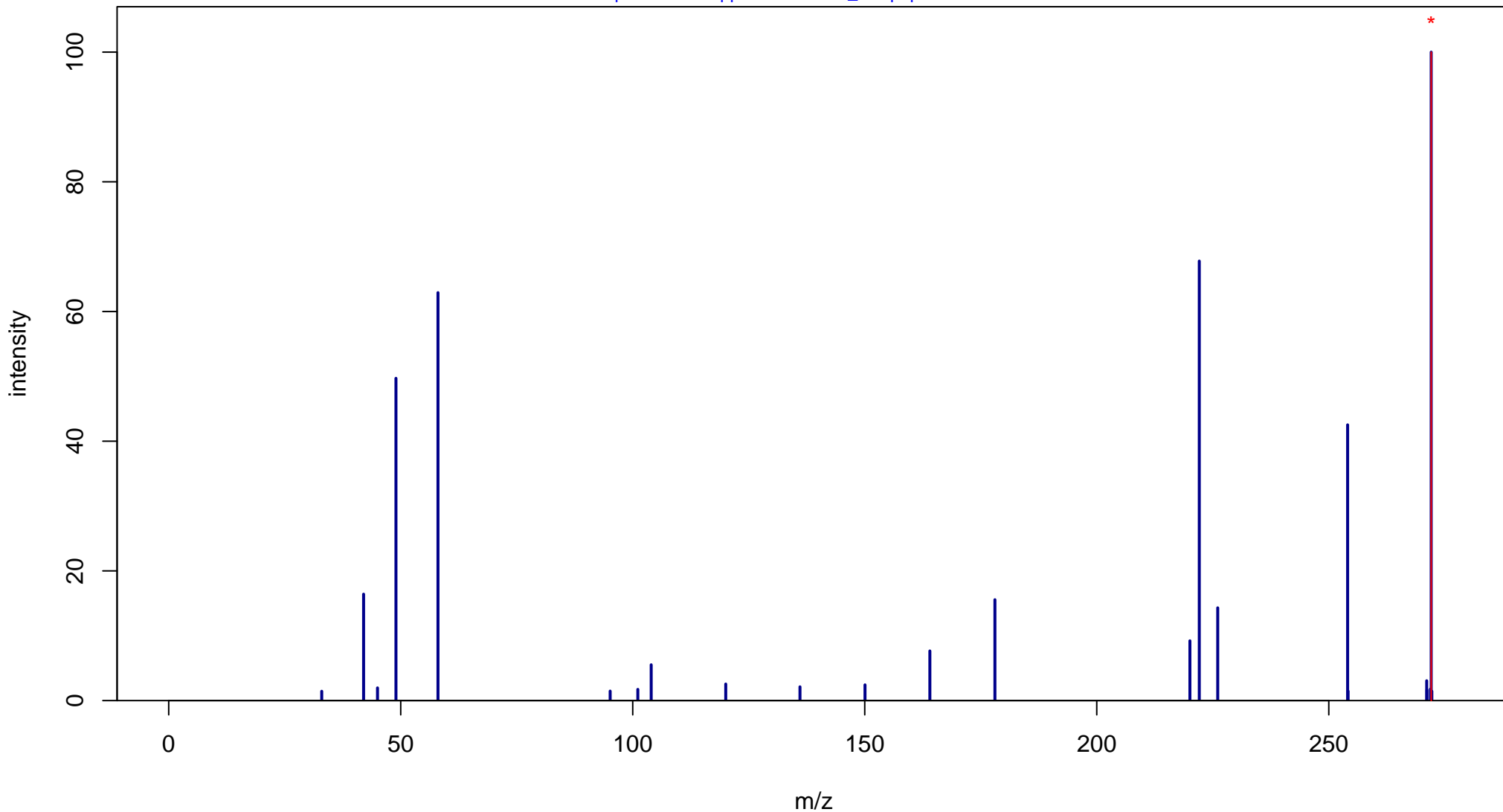
# Modafinil

Mass: 273.0823 Formula: C<sub>15</sub>H<sub>15</sub>NO<sub>2</sub>S

mode: - collisionE: 0V

METLIN ID: 44446 SIGMA Prod: M6940

[http://metlin.scripps.edu/metabo\\_info.php?molid=44446](http://metlin.scripps.edu/metabo_info.php?molid=44446)



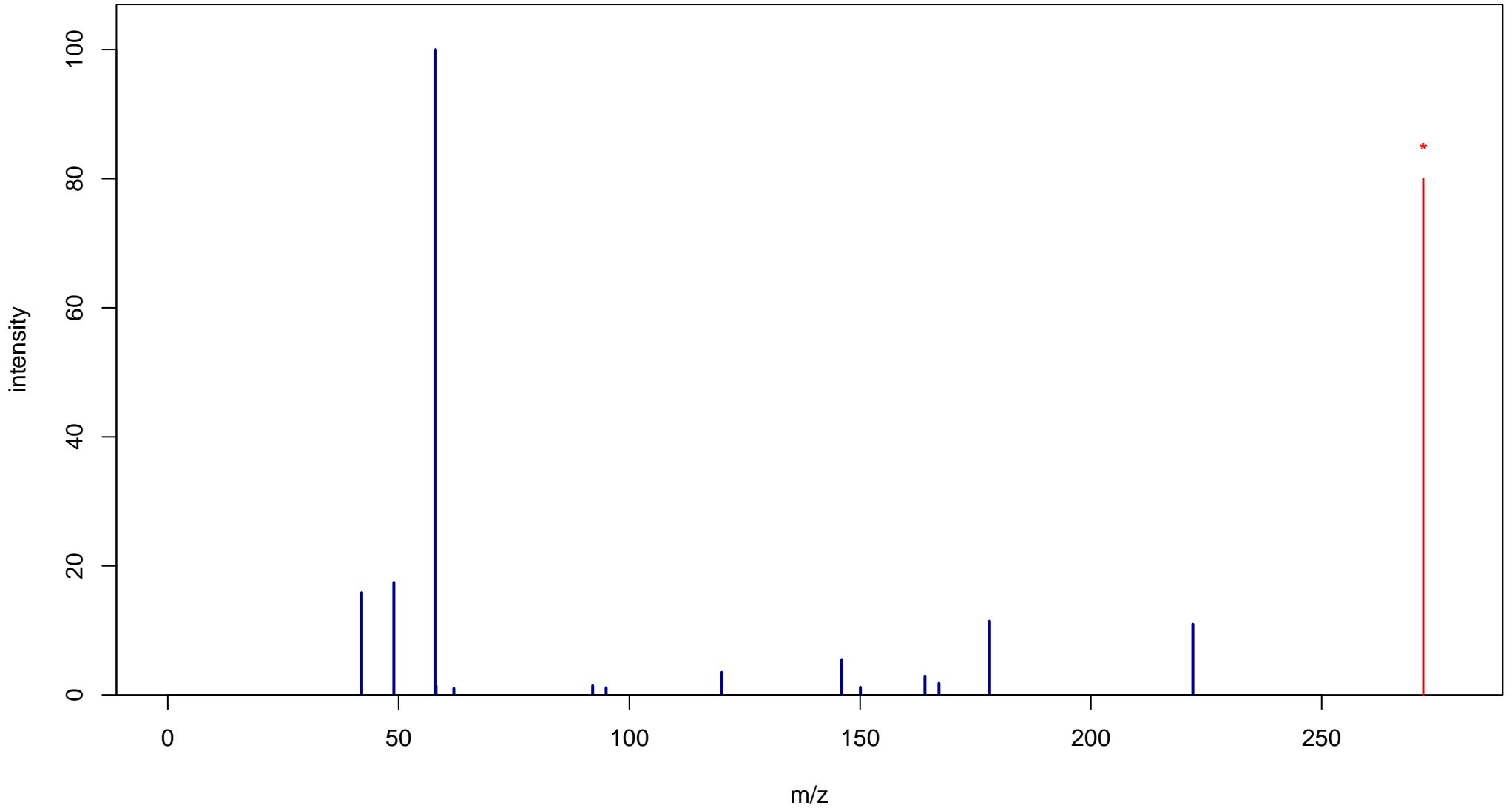
# Modafinil

Mass: 273.0823 Formula: C<sub>15</sub>H<sub>15</sub>NO<sub>2</sub>S

mode: - collisionE: 10V

METLIN ID: 44446 SIGMA Prod: M6940

[http://metlin.scripps.edu/metabo\\_info.php?molid=44446](http://metlin.scripps.edu/metabo_info.php?molid=44446)



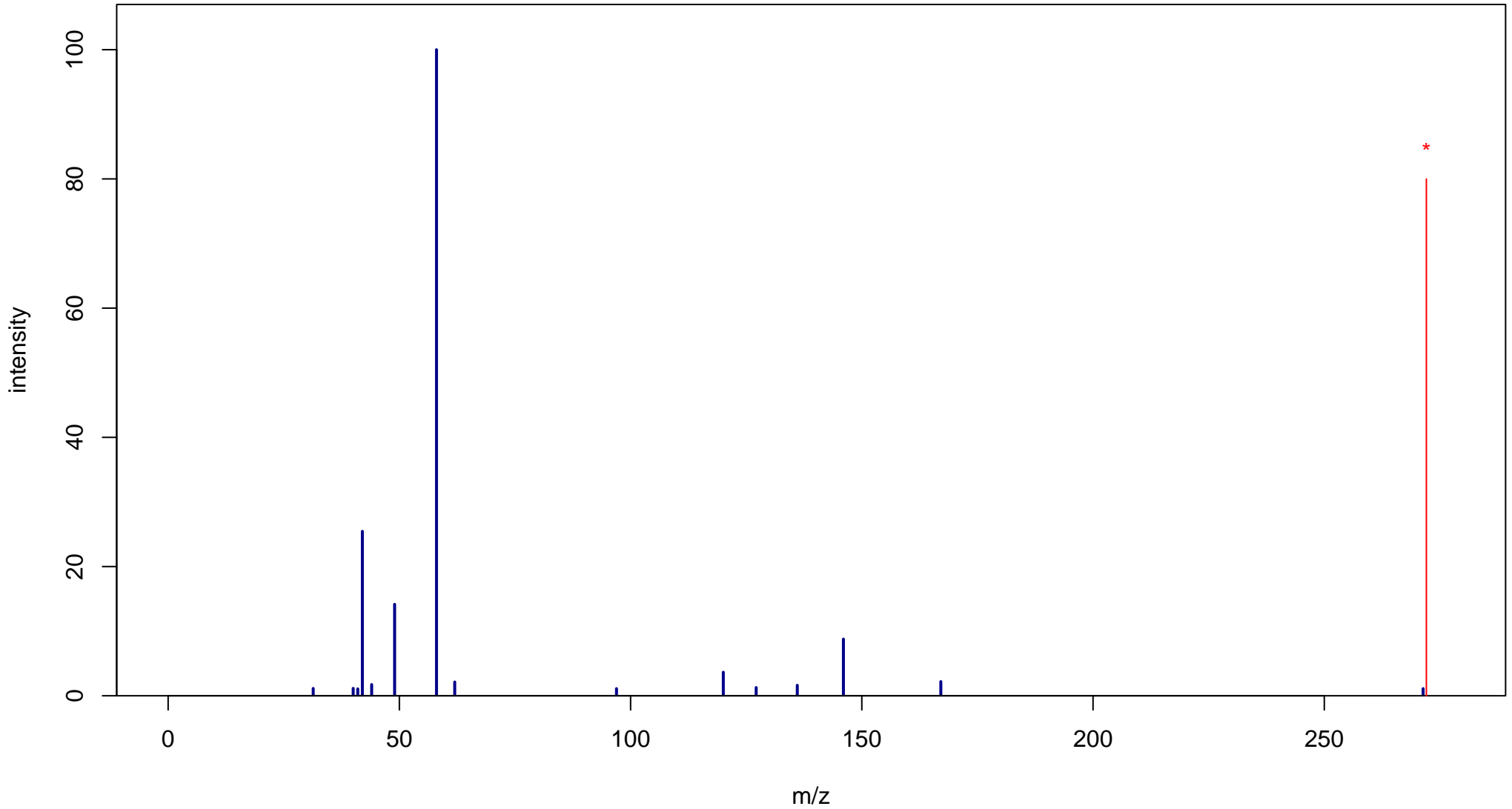
# Modafinil

Mass: 273.0823 Formula: C<sub>15</sub>H<sub>15</sub>NO<sub>2</sub>S

mode: - collisionE: 20V

METLIN ID: 44446 SIGMA Prod: M6940

[http://metlin.scripps.edu/metabo\\_info.php?molid=44446](http://metlin.scripps.edu/metabo_info.php?molid=44446)



# Modafinil

Mass: 273.0823 Formula: C<sub>15</sub>H<sub>15</sub>NO<sub>2</sub>S

mode: - collisionE: 40V

METLIN ID: 44446 SIGMA Prod: M6940

[http://metlin.scripps.edu/metabo\\_info.php?molid=44446](http://metlin.scripps.edu/metabo_info.php?molid=44446)

