

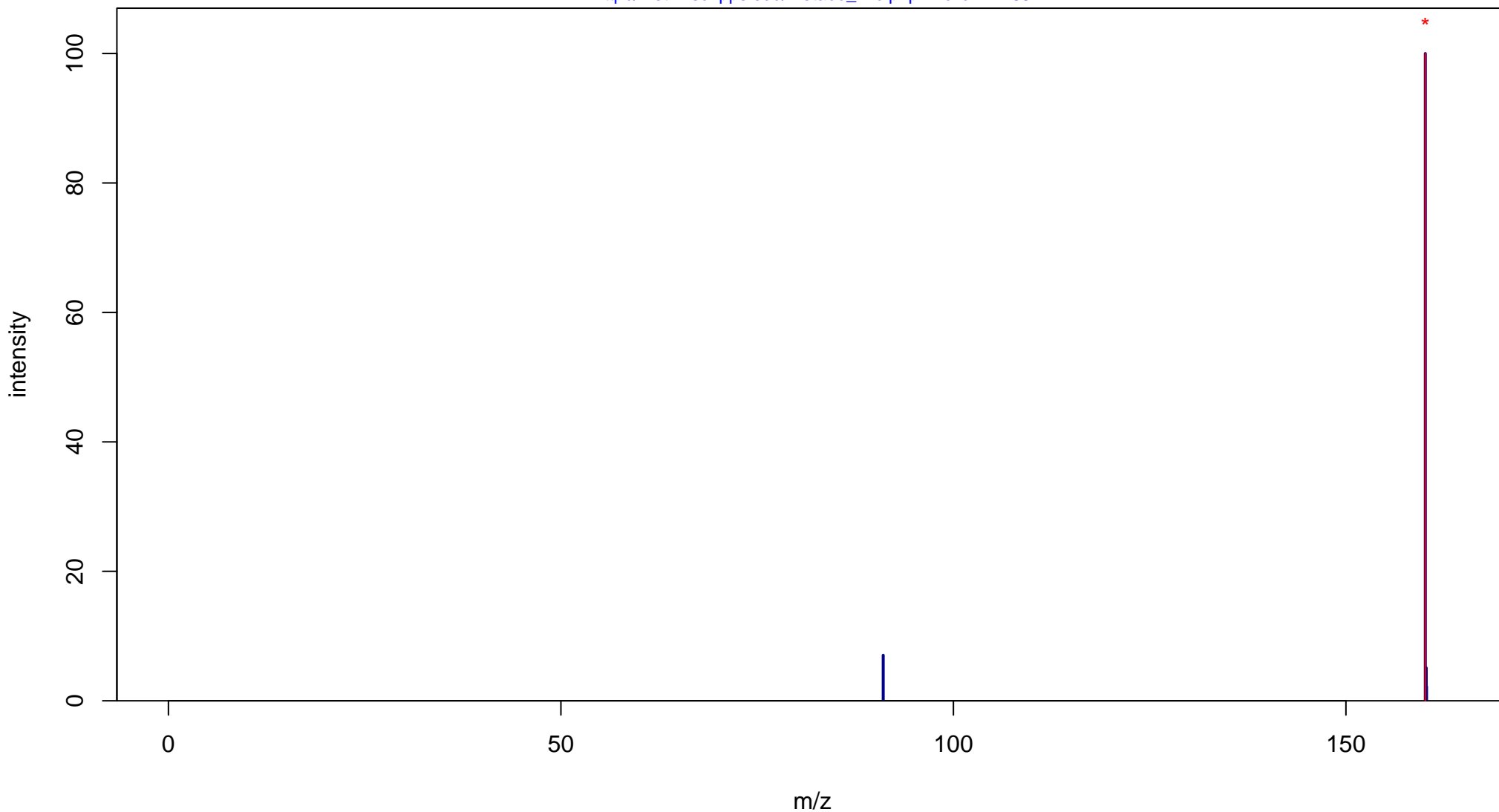
N-Methyl-N-propargylbenzylamine

Mass: 159.1048 Formula: C₁₁H₁₃N

mode: + collisionE: 0V

METLIN ID: 44165 SIGMA Prod: M74253

http://metlin.scripps.edu/metabo_info.php?molid=44165



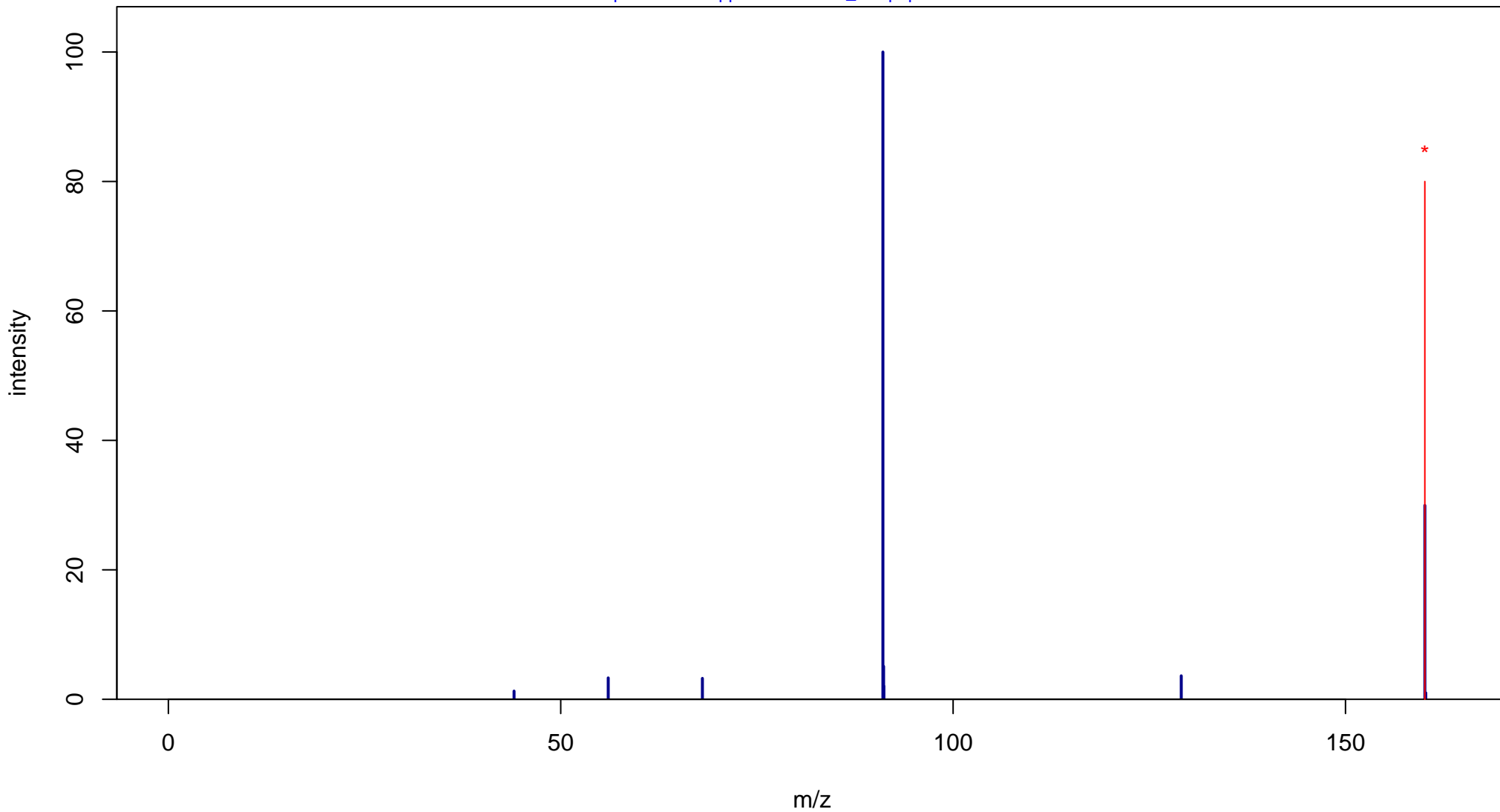
N-Methyl-N-propargylbenzylamine

Mass: 159.1048 Formula: C₁₁H₁₃N

mode: + collisionE: 10V

METLIN ID: 44165 SIGMA Prod: M74253

http://metlin.scripps.edu/metabo_info.php?molid=44165



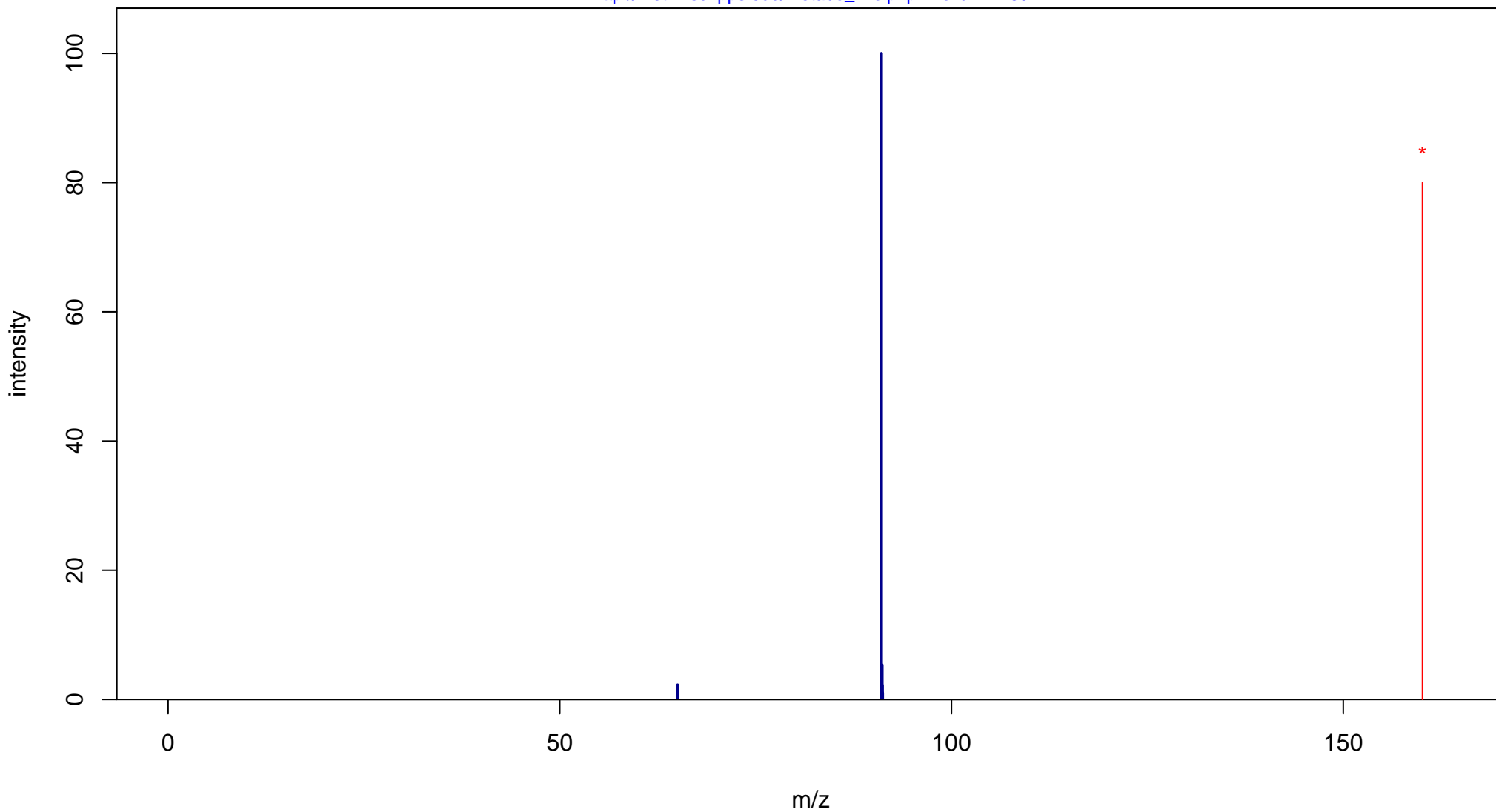
N-Methyl-N-propargylbenzylamine

Mass: 159.1048 Formula: C₁₁H₁₃N

mode: + collisionE: 20V

METLIN ID: 44165 SIGMA Prod: M74253

http://metlin.scripps.edu/metabo_info.php?molid=44165



N-Methyl-N-propargylbenzylamine

Mass: 159.1048 Formula: C₁₁H₁₃N

mode: + collisionE: 40V

METLIN ID: 44165 SIGMA Prod: M74253

http://metlin.scripps.edu/metabo_info.php?molid=44165

