

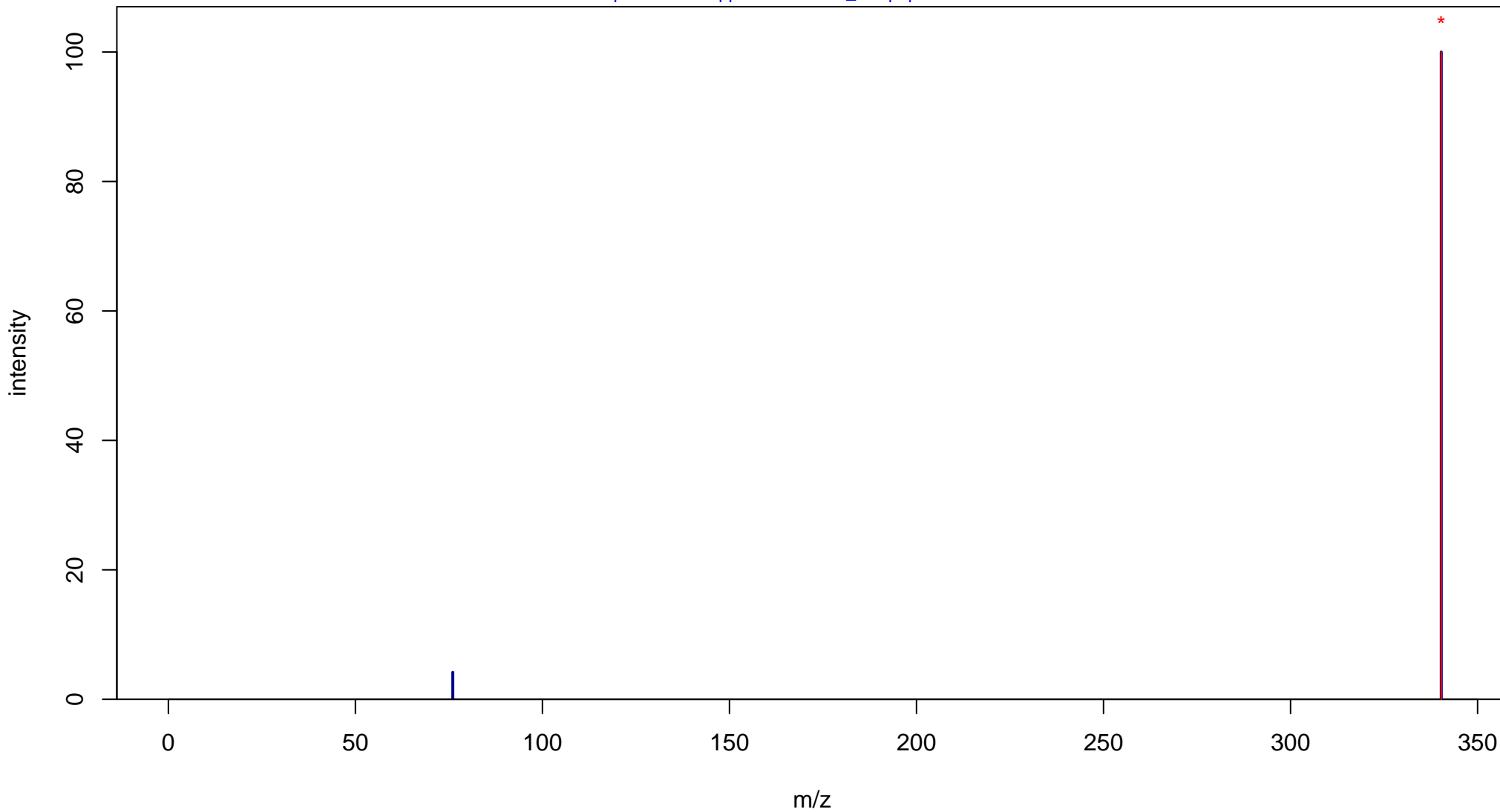
N-Oleoylglycine

Mass: 339.2773 Formula: C₂₀H₃₇NO₃

mode: + collisionE: 0V

METLIN ID: 46559 SIGMA Prod: O9762

http://metlin.scripps.edu/metabo_info.php?molid=46559



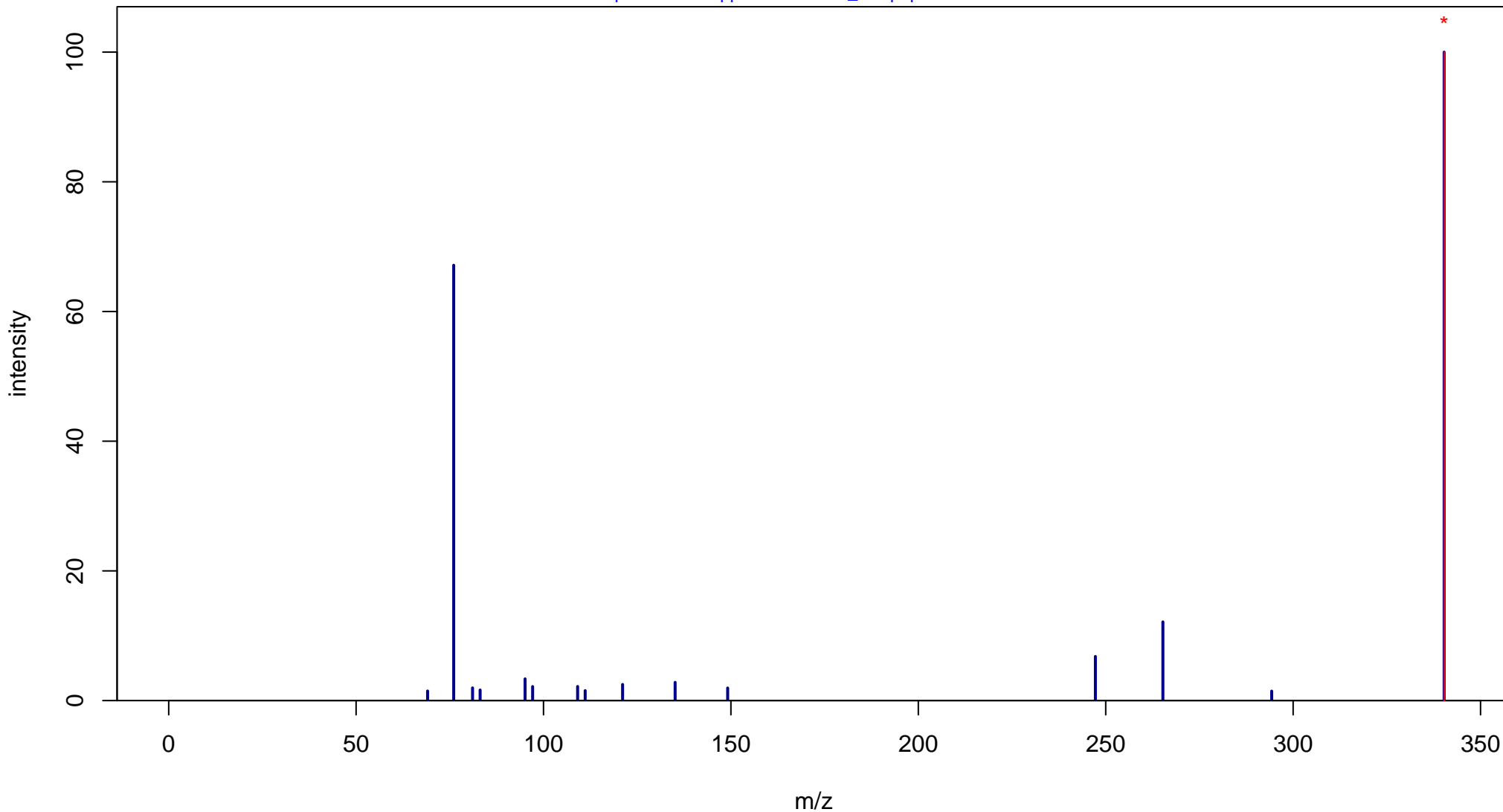
N-Oleoylglycine

Mass: 339.2773 Formula: C₂₀H₃₇NO₃

mode: + collisionE: 10V

METLIN ID: 46559 SIGMA Prod: O9762

http://metlin.scripps.edu/metabo_info.php?molid=46559



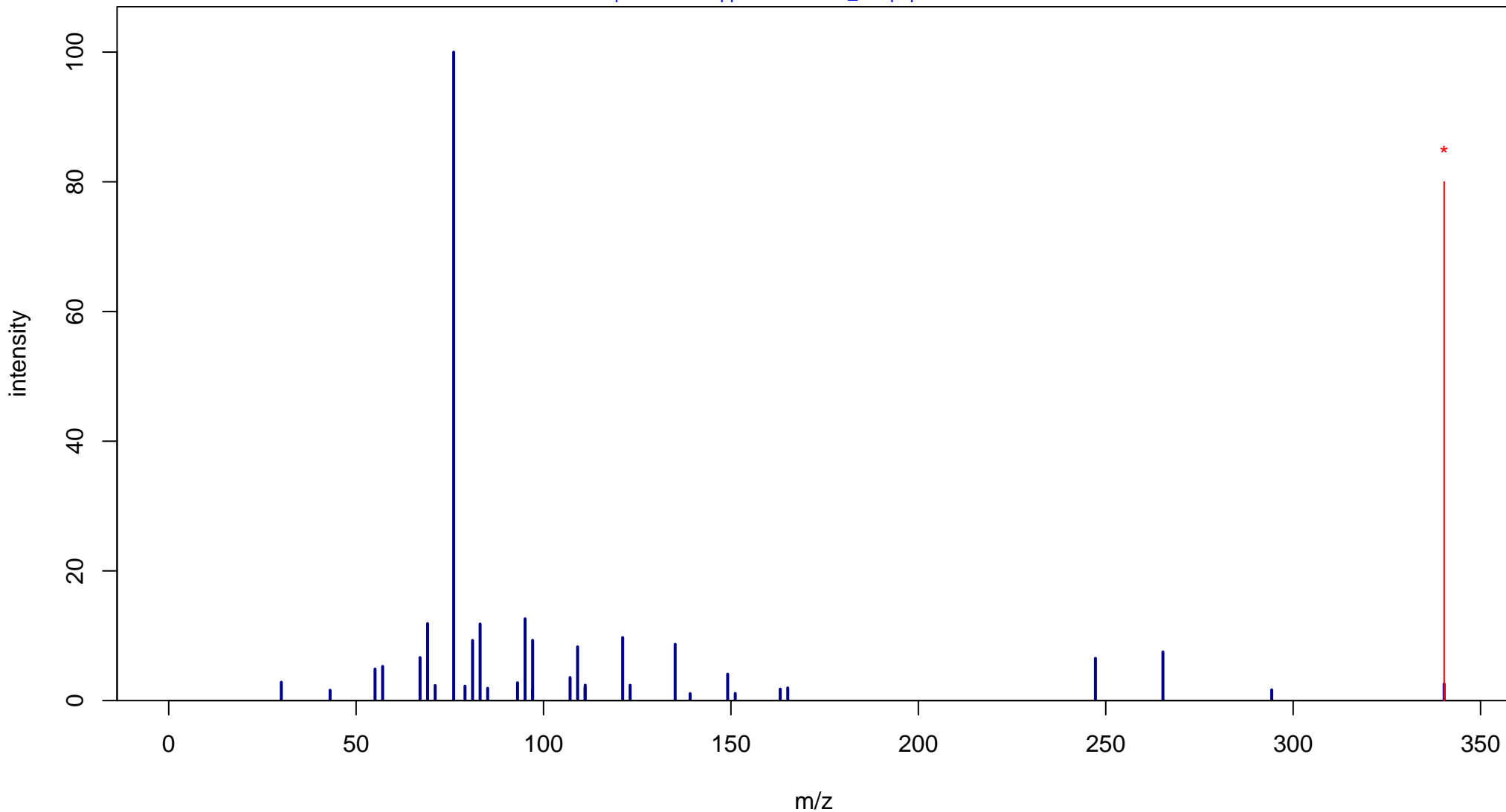
N-Oleoylglycine

Mass: 339.2773 Formula: C₂₀H₃₇NO₃

mode: + collisionE: 20V

METLIN ID: 46559 SIGMA Prod: O9762

http://metlin.scripps.edu/metabo_info.php?molid=46559



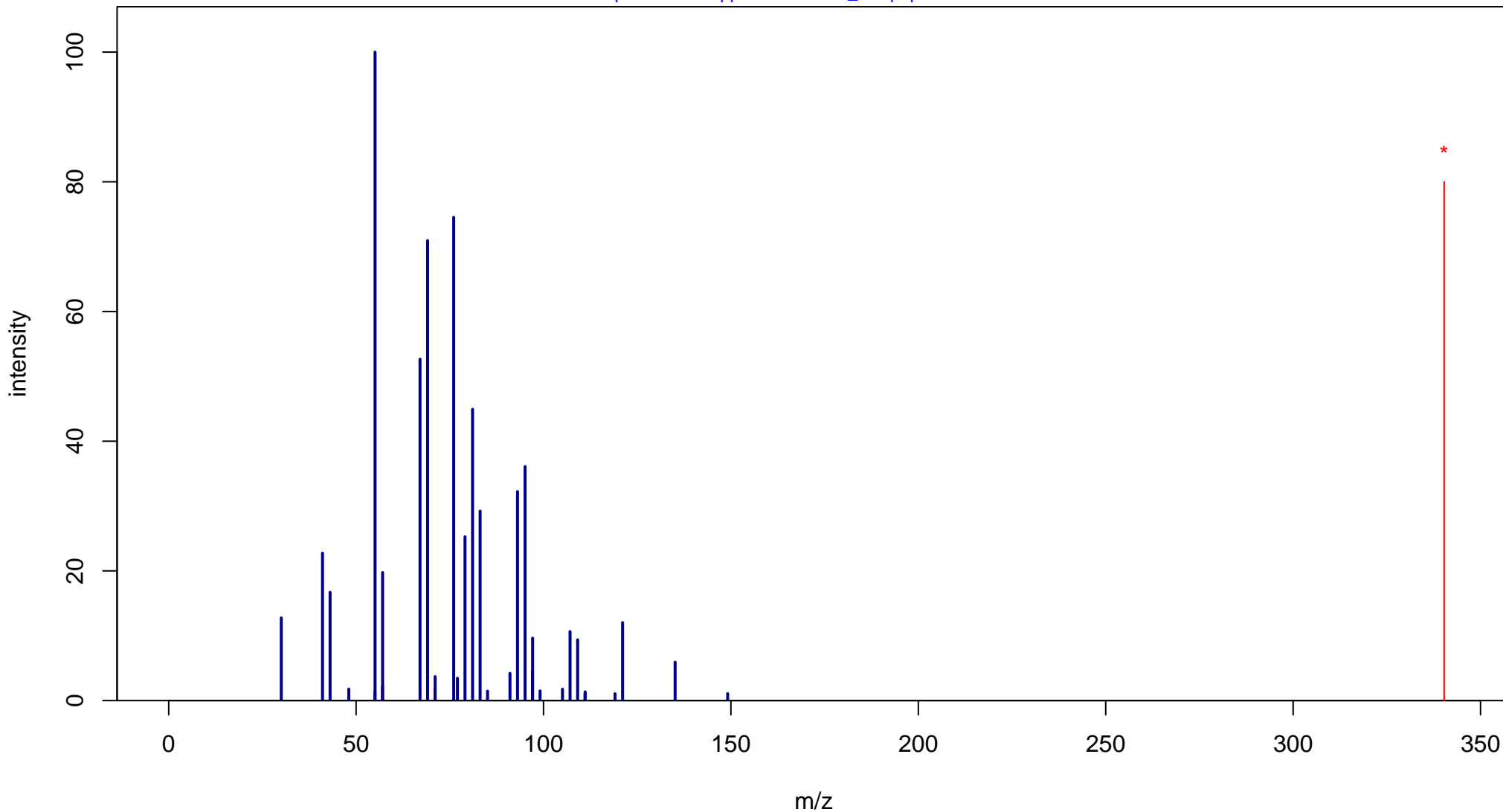
N-Oleoylglycine

Mass: 339.2773 Formula: C₂₀H₃₇NO₃

mode: + collisionE: 40V

METLIN ID: 46559 SIGMA Prod: O9762

http://metlin.scripps.edu/metabo_info.php?molid=46559



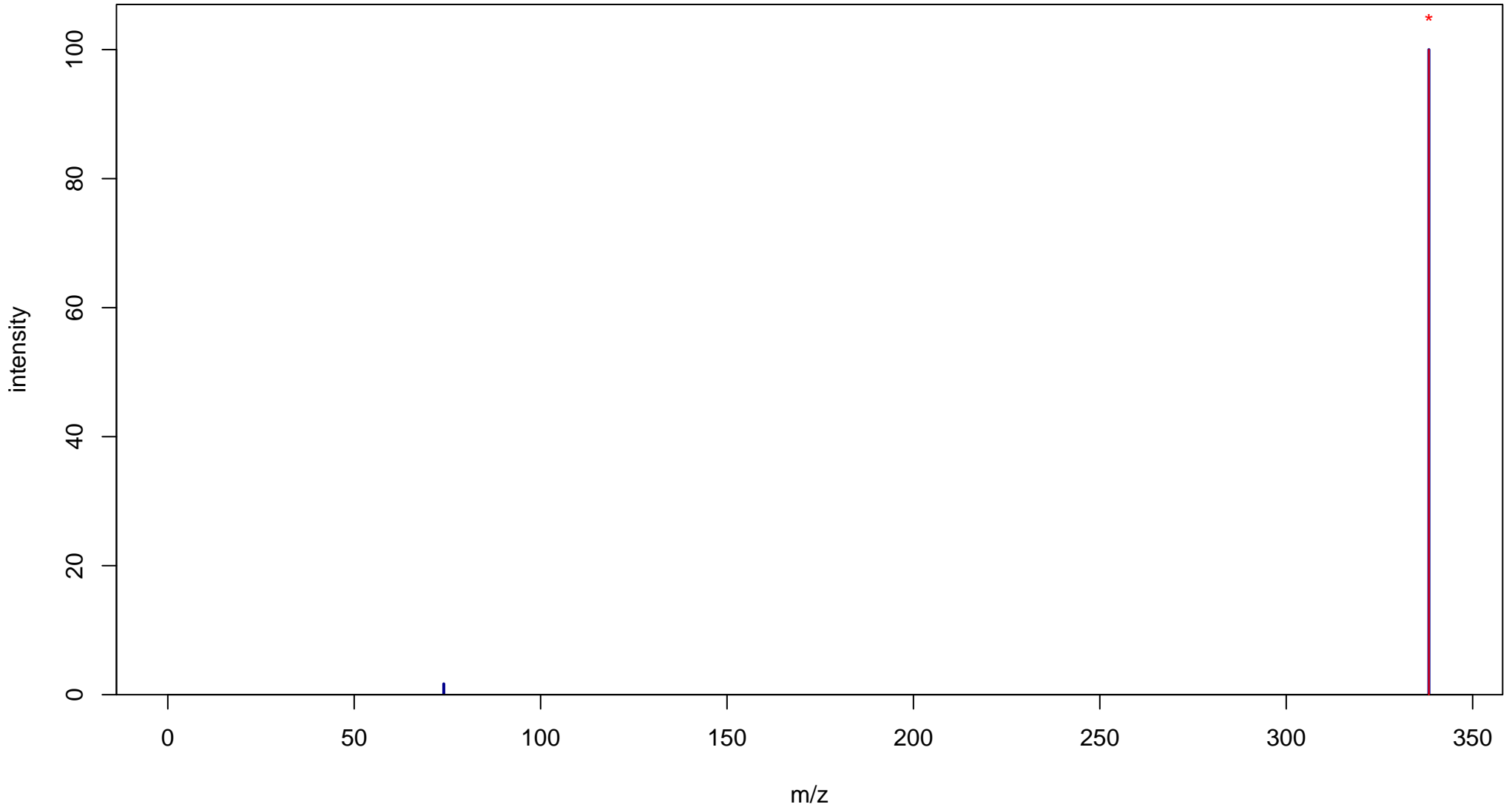
N-Oleoylglycine

Mass: 339.2773 Formula: C₂₀H₃₇NO₃

mode: - collisionE: 0V

METLIN ID: 46559 SIGMA Prod: O9762

http://metlin.scripps.edu/metabo_info.php?molid=46559



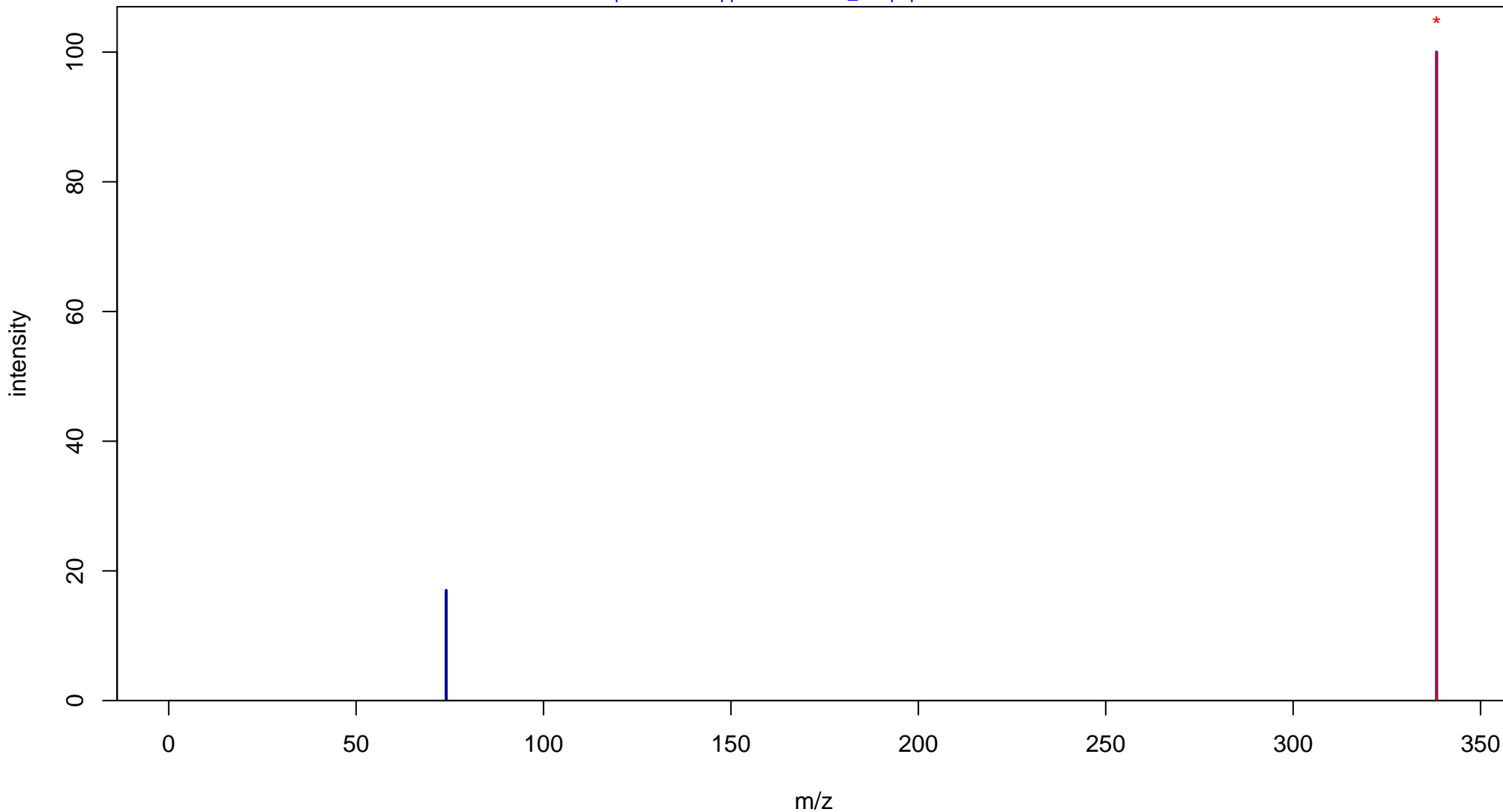
N-Oleoylglycine

Mass: 339.2773 Formula: C₂₀H₃₇NO₃

mode: - collisionE: 10V

METLIN ID: 46559 SIGMA Prod: O9762

http://metlin.scripps.edu/metabo_info.php?molid=46559



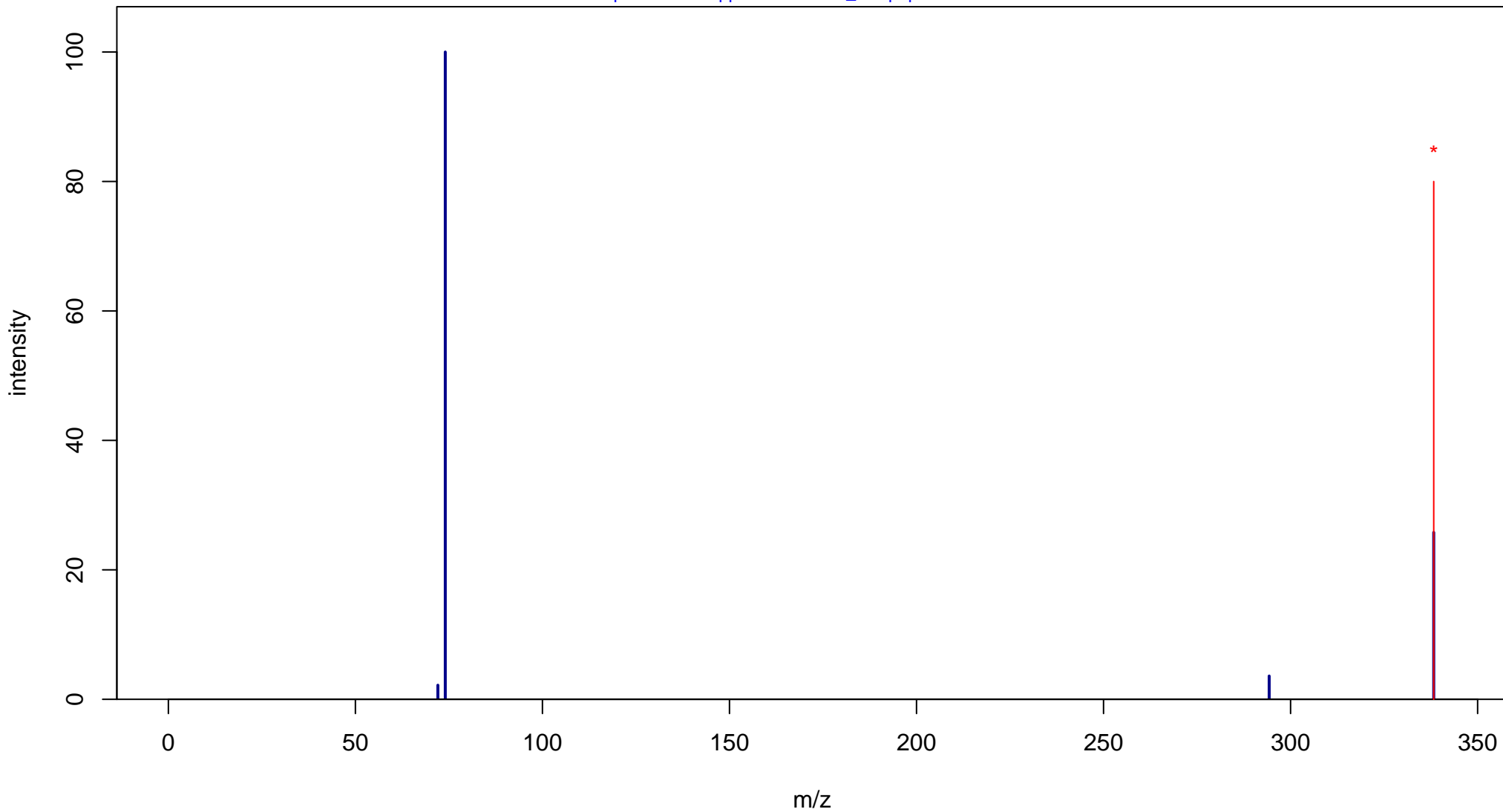
N-Oleoylglycine

Mass: 339.2773 Formula: C₂₀H₃₇NO₃

mode: - collisionE: 20V

METLIN ID: 46559 SIGMA Prod: O9762

http://metlin.scripps.edu/metabo_info.php?molid=46559



N-Oleoylglycine

Mass: 339.2773 Formula: C₂₀H₃₇NO₃

mode: - collisionE: 40V

METLIN ID: 46559 SIGMA Prod: O9762

http://metlin.scripps.edu/metabo_info.php?molid=46559

