

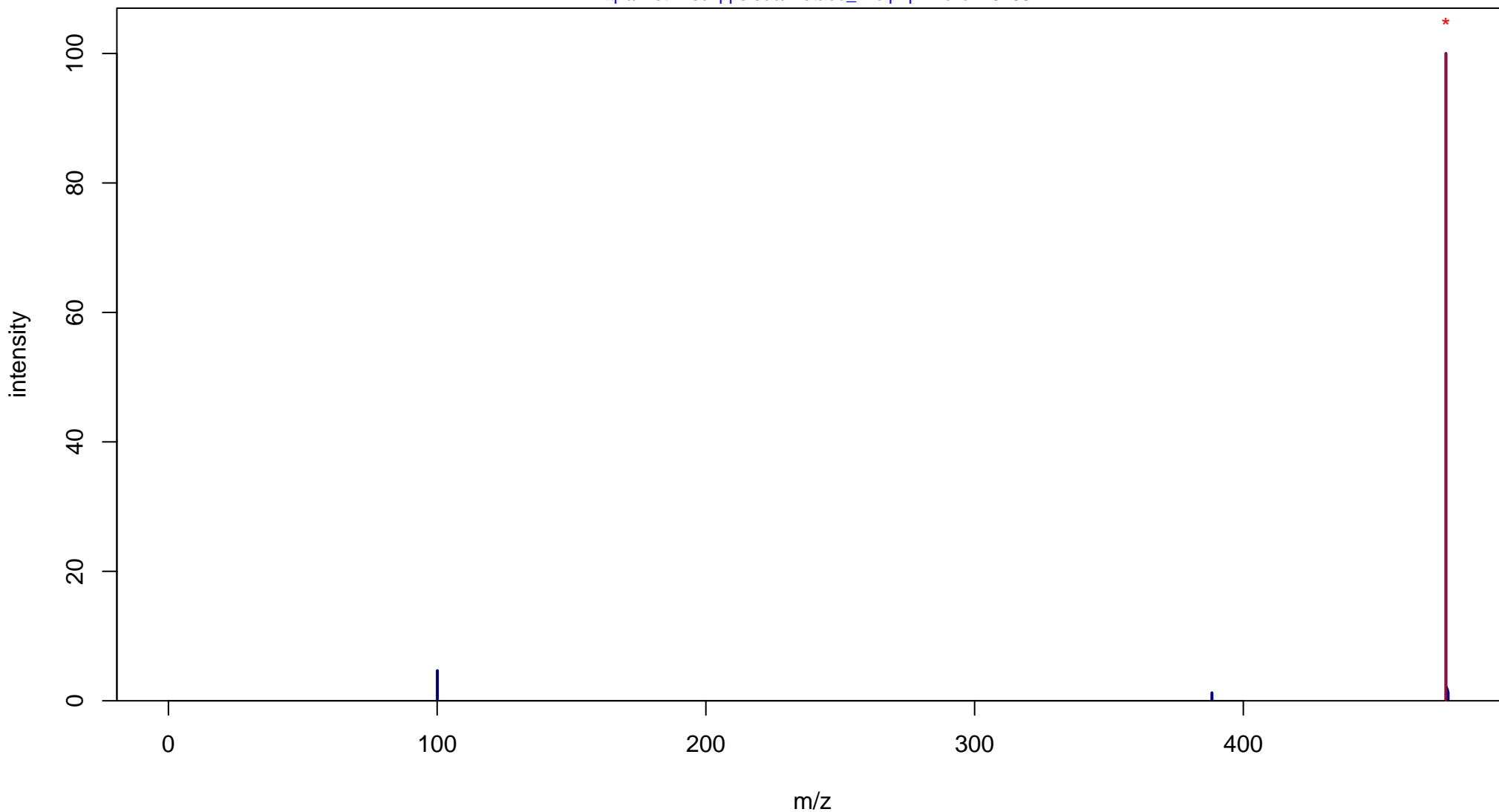
# DL-threo-1-Phenyl-2-palmitoylamino-3-morpholino-1-propanol

Mass: 474.3821 Formula: C<sub>29</sub>H<sub>50</sub>N<sub>2</sub>O<sub>3</sub>

mode: + collisionE: 0V

METLIN ID: 43408 SIGMA Prod: P4194

[http://metlin.scripps.edu/metabo\\_info.php?molid=43408](http://metlin.scripps.edu/metabo_info.php?molid=43408)



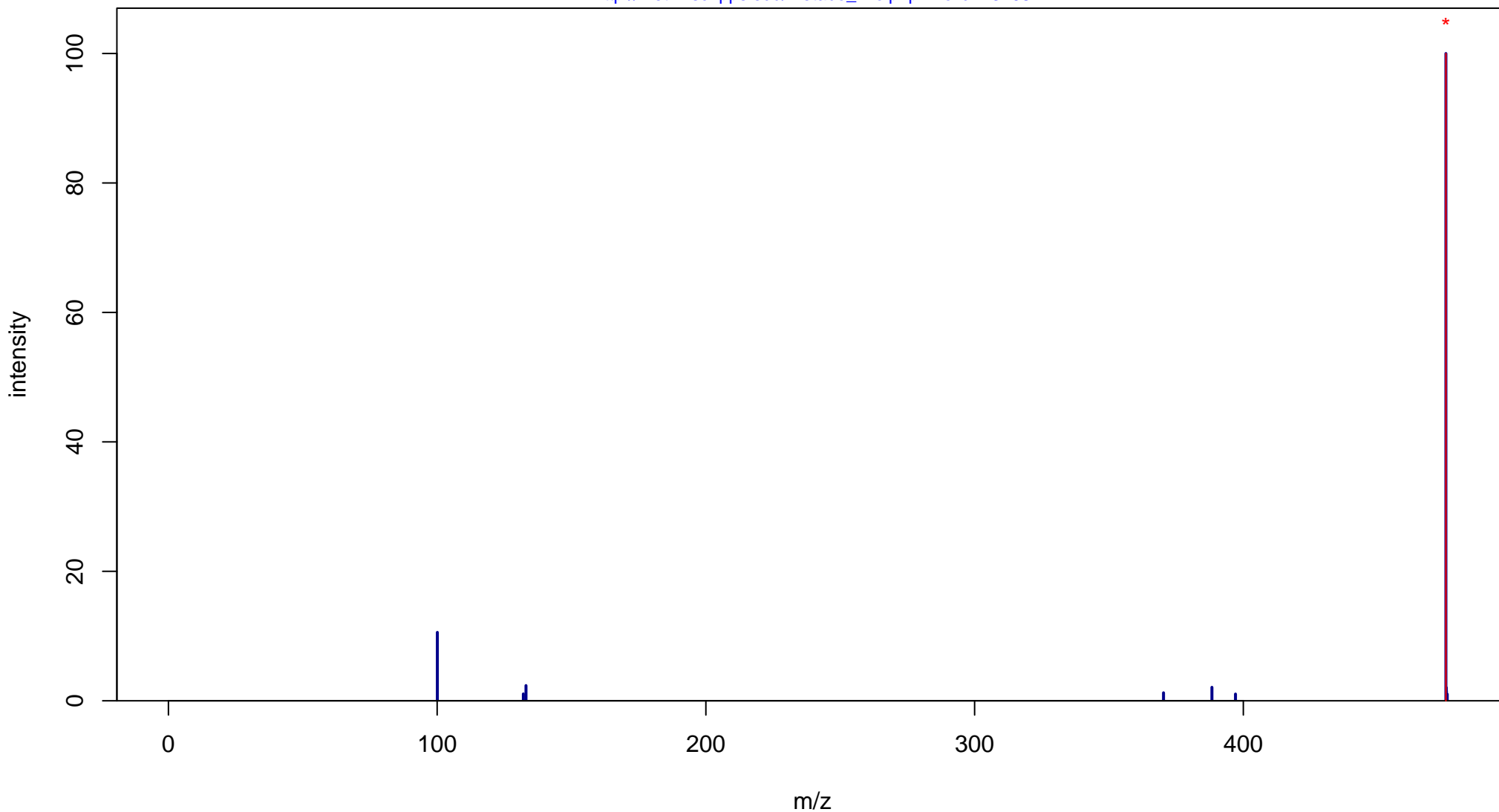
# DL-threo-1-Phenyl-2-palmitoylamino-3-morpholino-1-propanol

Mass: 474.3821 Formula: C<sub>29</sub>H<sub>50</sub>N<sub>2</sub>O<sub>3</sub>

mode: + collisionE: 10V

METLIN ID: 43408 SIGMA Prod: P4194

[http://metlin.scripps.edu/metabo\\_info.php?molid=43408](http://metlin.scripps.edu/metabo_info.php?molid=43408)



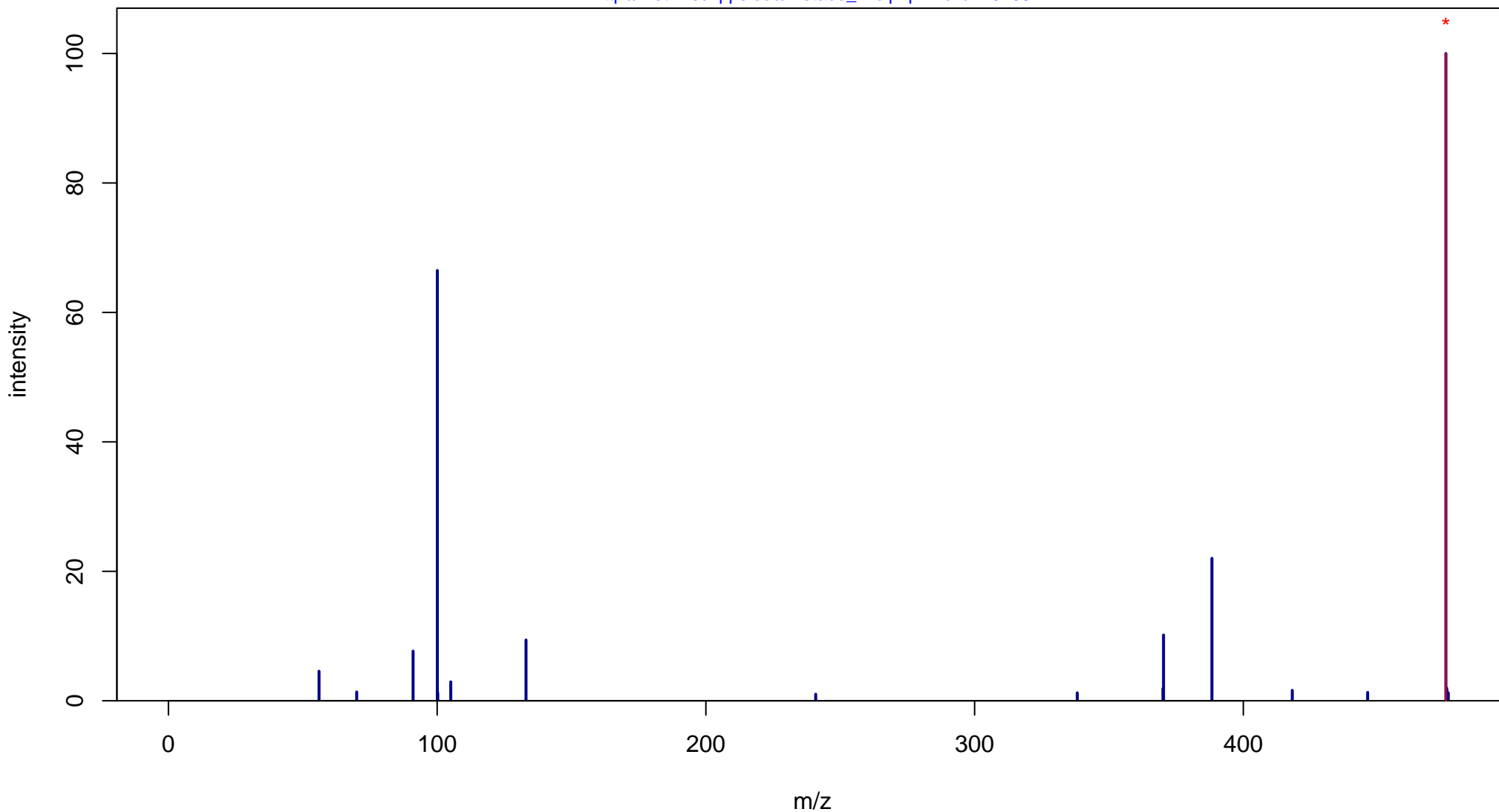
# DL-threo-1-Phenyl-2-palmitoylamino-3-morpholino-1-propanol

Mass: 474.3821 Formula: C<sub>29</sub>H<sub>50</sub>N<sub>2</sub>O<sub>3</sub>

mode: + collisionE: 20V

METLIN ID: 43408 SIGMA Prod: P4194

[http://metlin.scripps.edu/metabo\\_info.php?molid=43408](http://metlin.scripps.edu/metabo_info.php?molid=43408)



# DL-threo-1-Phenyl-2-palmitoylamino-3-morpholino-1-propanol

Mass: 474.3821 Formula: C<sub>29</sub>H<sub>50</sub>N<sub>2</sub>O<sub>3</sub>

mode: + collisionE: 40V

METLIN ID: 43408 SIGMA Prod: P4194

[http://metlin.scripps.edu/metabo\\_info.php?molid=43408](http://metlin.scripps.edu/metabo_info.php?molid=43408)

