

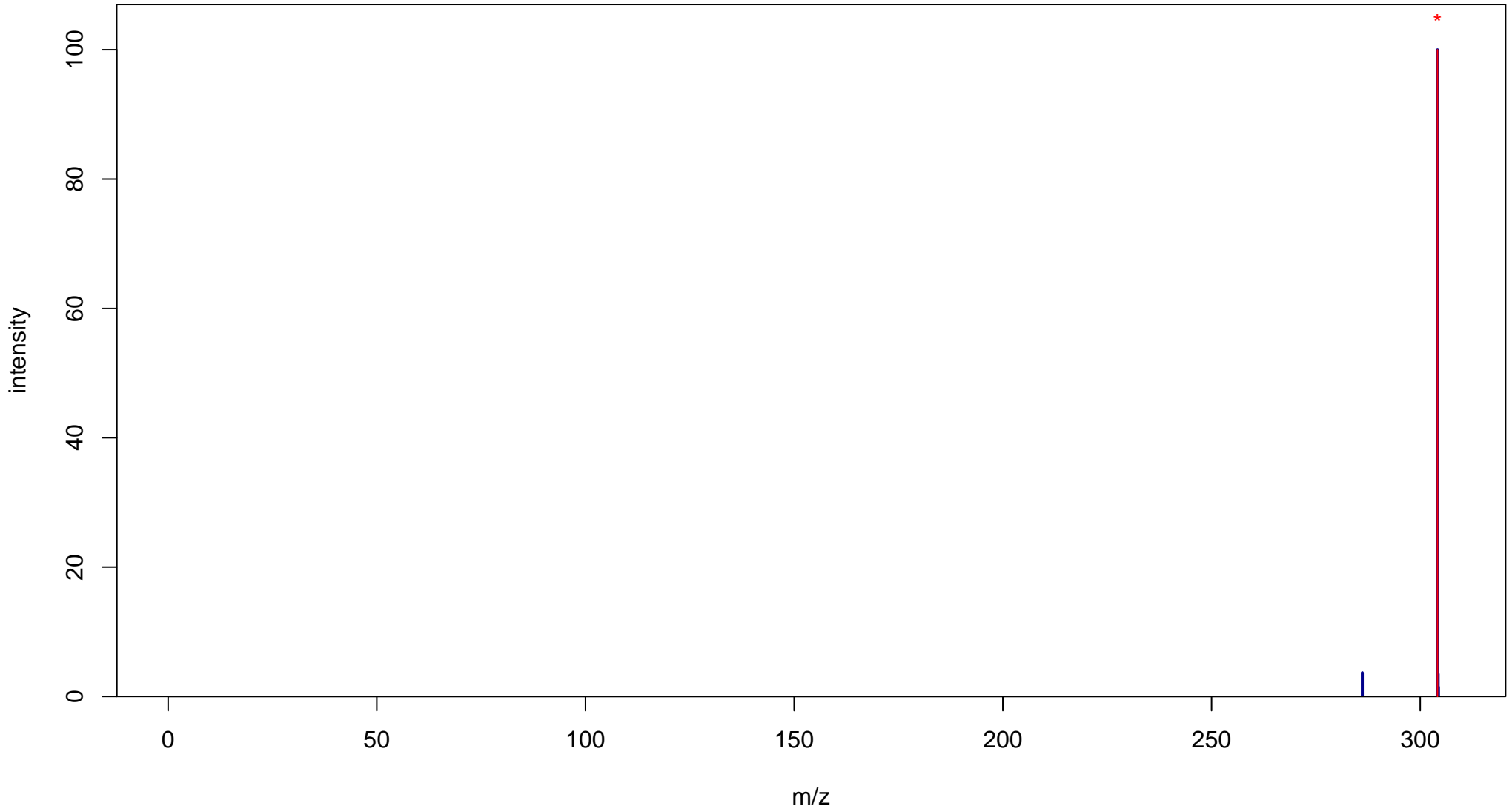
Pipemidic acid

Mass: 303.1331 Formula: C₁₄H₁₇N₅O₃

mode: + collisionE: 0V

METLIN ID: 44224 SIGMA Prod: P7903

http://metlin.scripps.edu/metabo_info.php?molid=44224



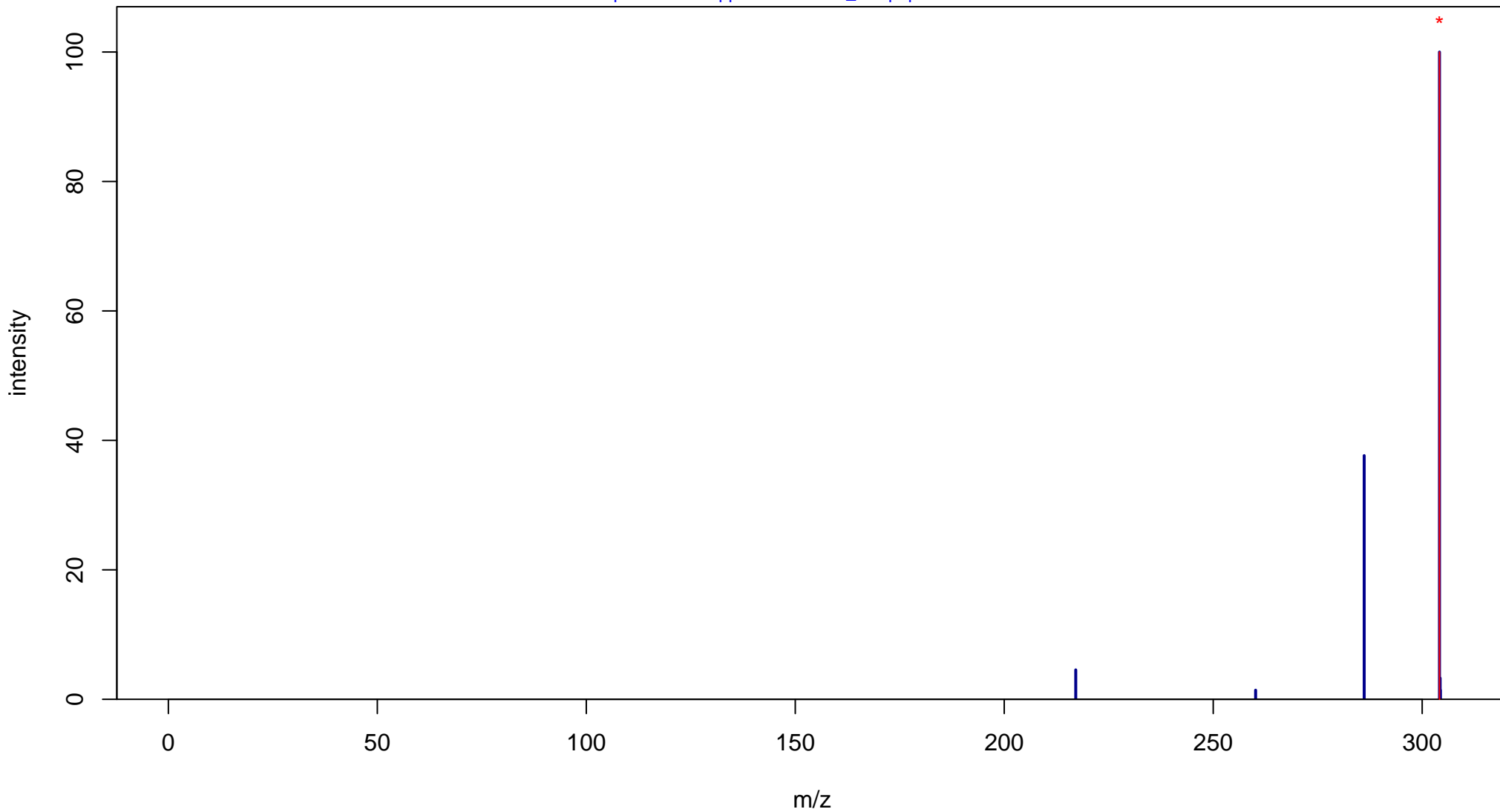
Pipemidic acid

Mass: 303.1331 Formula: C₁₄H₁₇N₅O₃

mode: + collisionE: 10V

METLIN ID: 44224 SIGMA Prod: P7903

http://metlin.scripps.edu/metabo_info.php?molid=44224



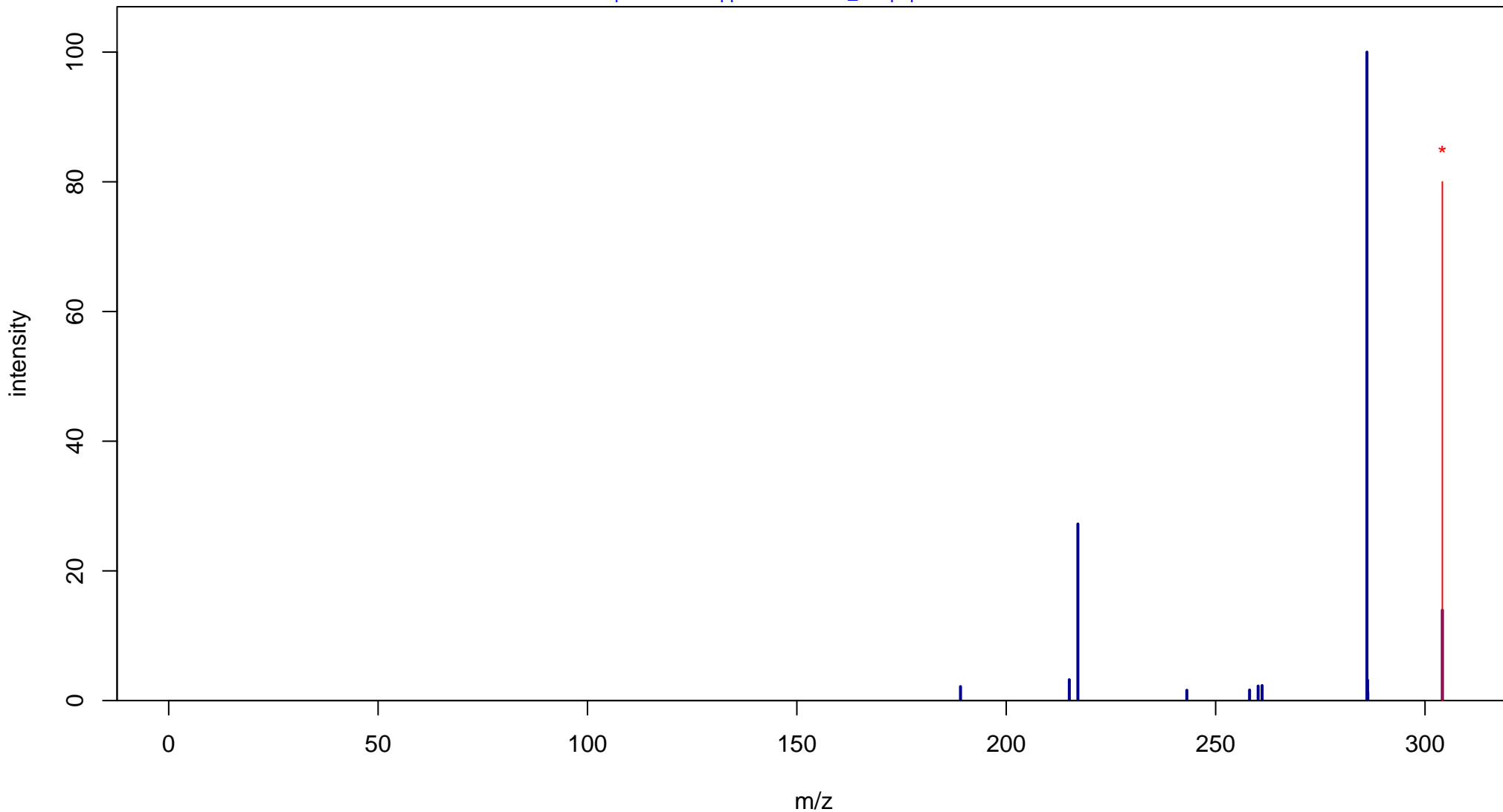
Pipemidic acid

Mass: 303.1331 Formula: C₁₄H₁₇N₅O₃

mode: + collisionE: 20V

METLIN ID: 44224 SIGMA Prod: P7903

http://metlin.scripps.edu/metabo_info.php?molid=44224



Pipemidic acid

Mass: 303.1331 Formula: C₁₄H₁₇N₅O₃

mode: + collisionE: 40V

METLIN ID: 44224 SIGMA Prod: P7903

http://metlin.scripps.edu/metabo_info.php?molid=44224

