

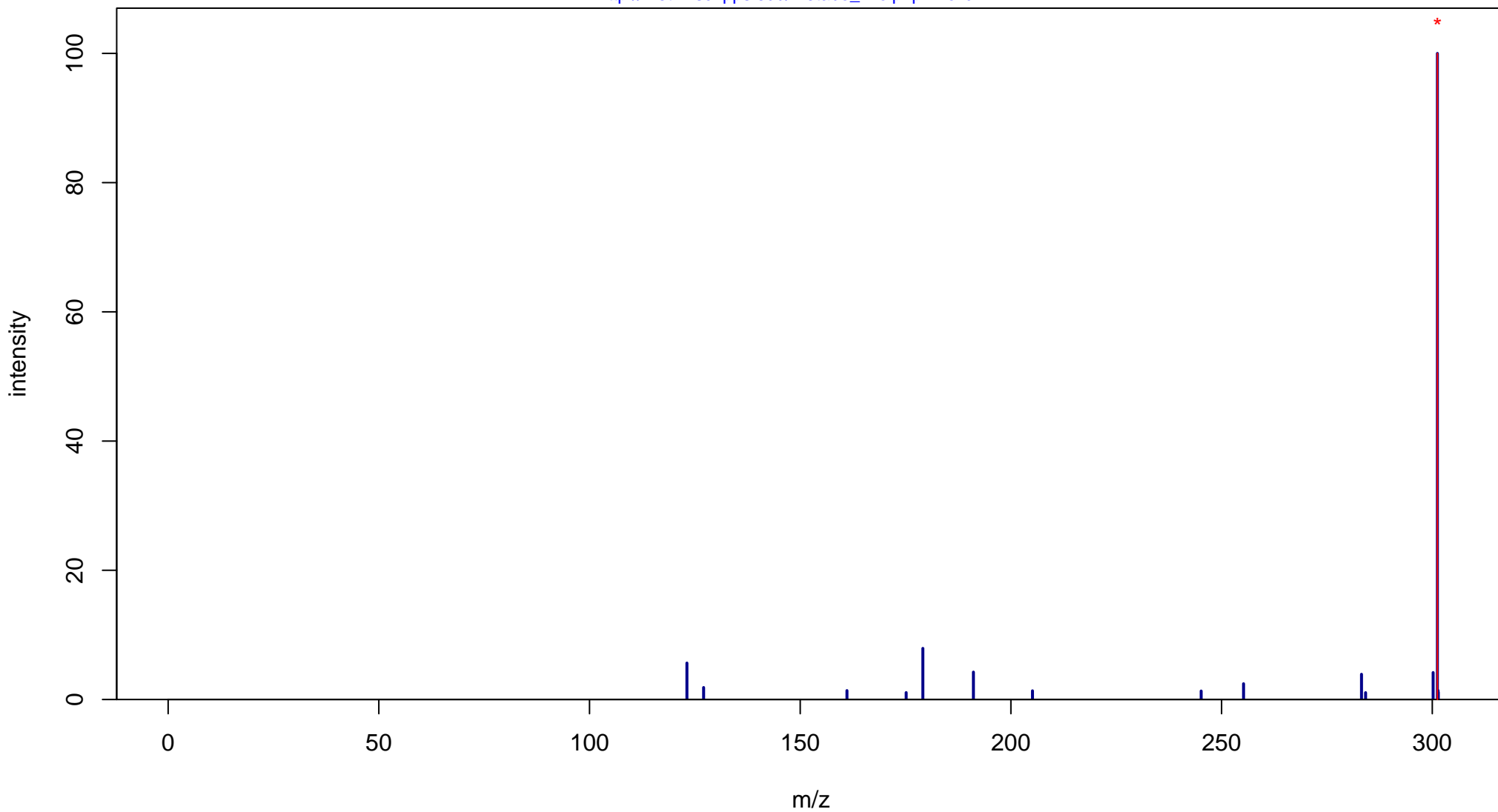
Retinoic acid

Mass: 300.2089 Formula: C₂₀H₂₈O₂

mode: + collisionE: 0V

METLIN ID: 2277 SIGMA Prod: R2625

http://metlin.scripps.edu/metabo_info.php?molid=2277



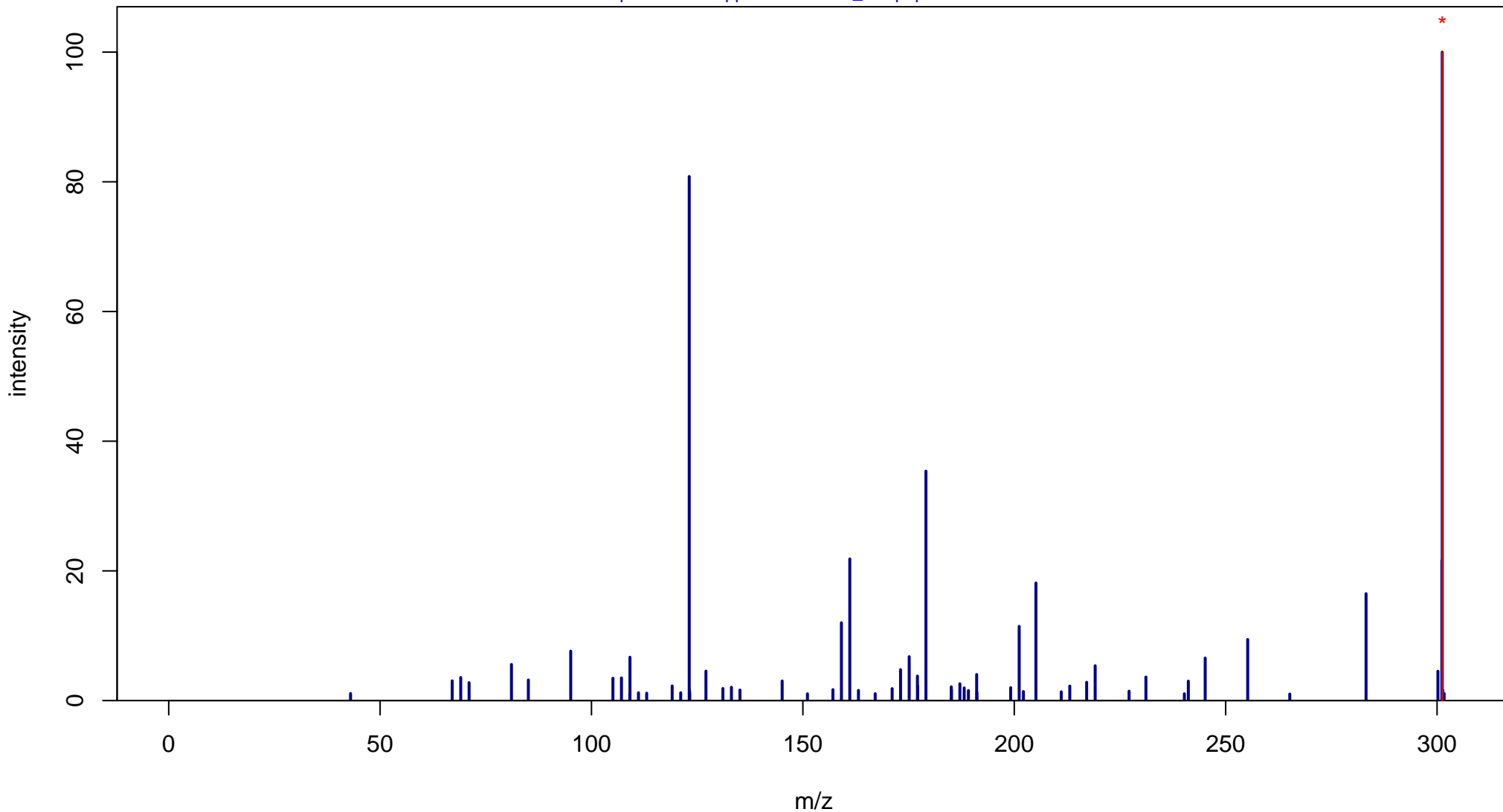
Retinoic acid

Mass: 300.2089 Formula: C₂₀H₂₈O₂

mode: + collisionE: 10V

METLIN ID: 2277 SIGMA Prod: R2625

http://metlin.scripps.edu/metabo_info.php?molid=2277



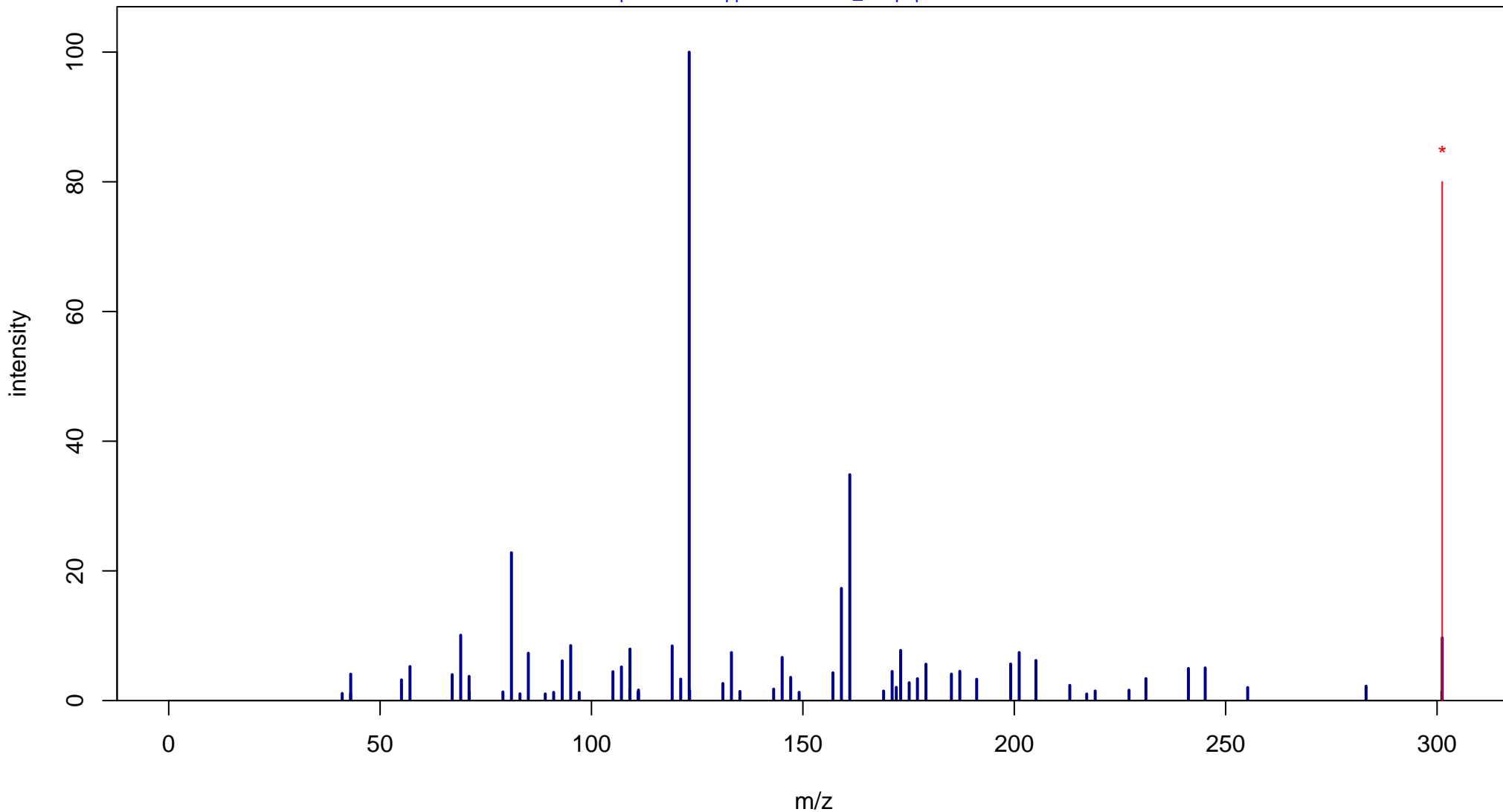
Retinoic acid

Mass: 300.2089 Formula: C₂₀H₂₈O₂

mode: + collisionE: 20V

METLIN ID: 2277 SIGMA Prod: R2625

http://metlin.scripps.edu/metabo_info.php?molid=2277



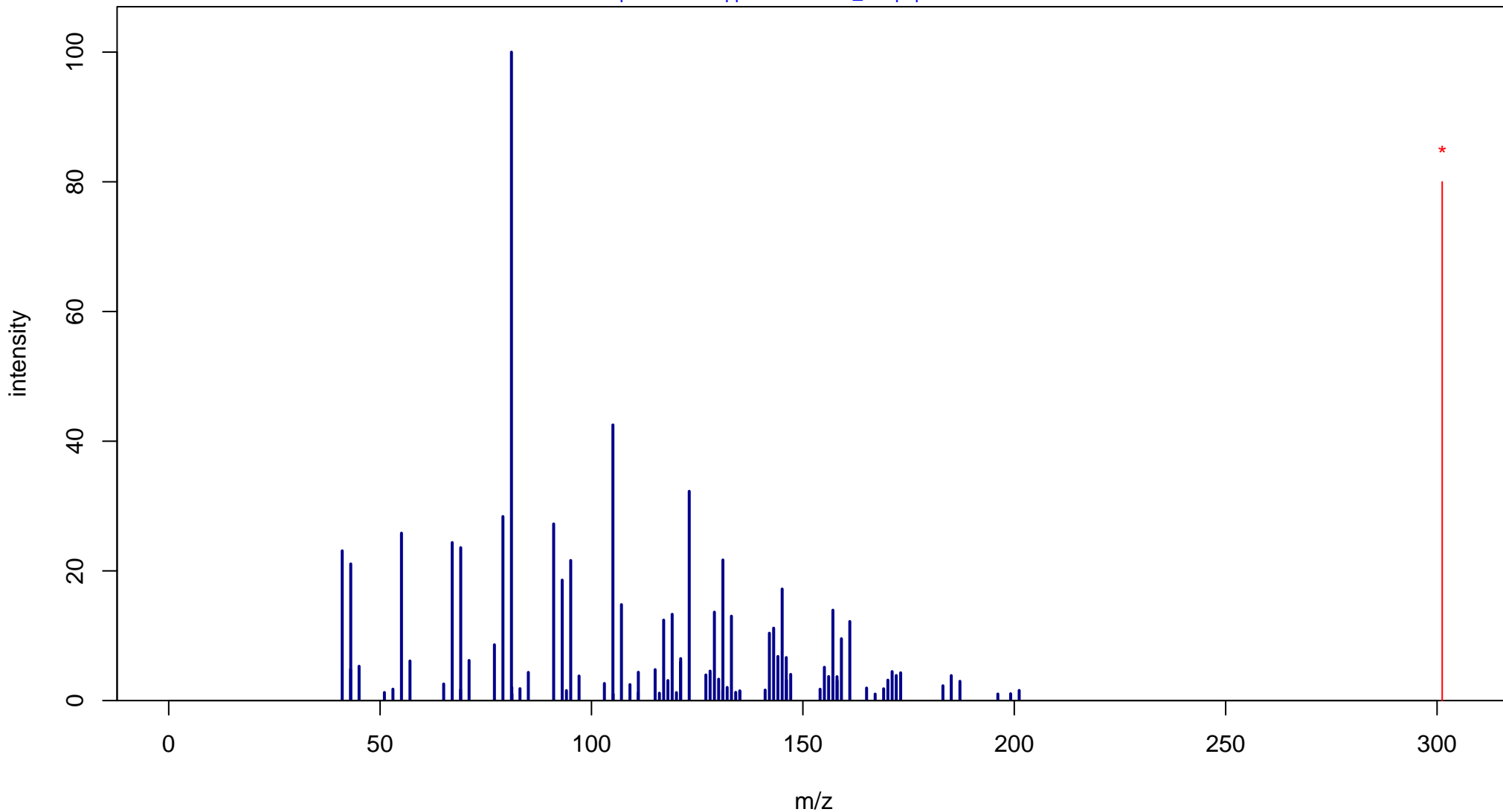
Retinoic acid

Mass: 300.2089 Formula: C₂₀H₂₈O₂

mode: + collisionE: 40V

METLIN ID: 2277 SIGMA Prod: R2625

http://metlin.scripps.edu/metabo_info.php?molid=2277



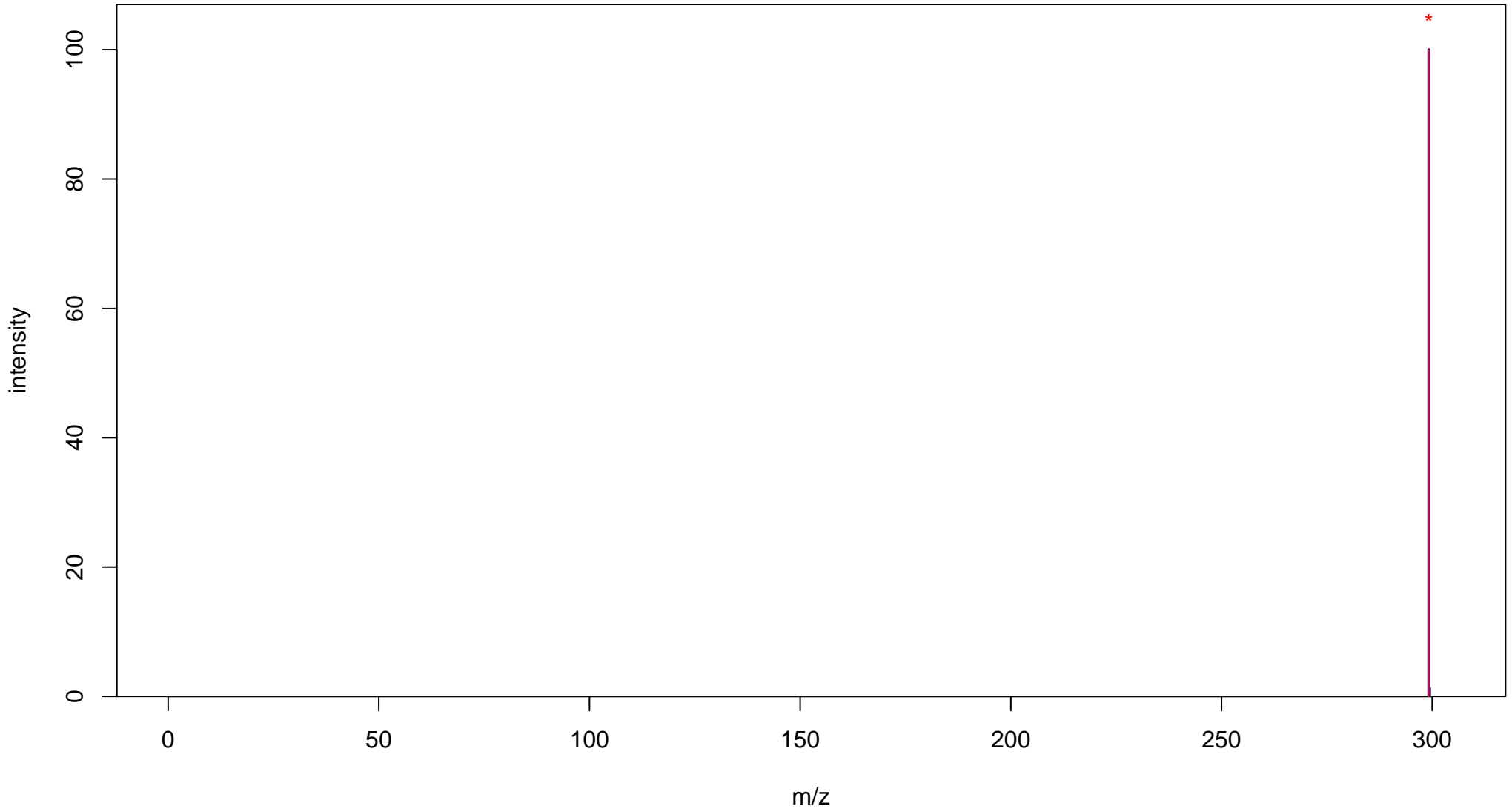
Retinoic acid

Mass: 300.2089 Formula: C₂₀H₂₈O₂

mode: - collisionE: 0V

METLIN ID: 2277 SIGMA Prod: R2625

http://metlin.scripps.edu/metabo_info.php?molid=2277



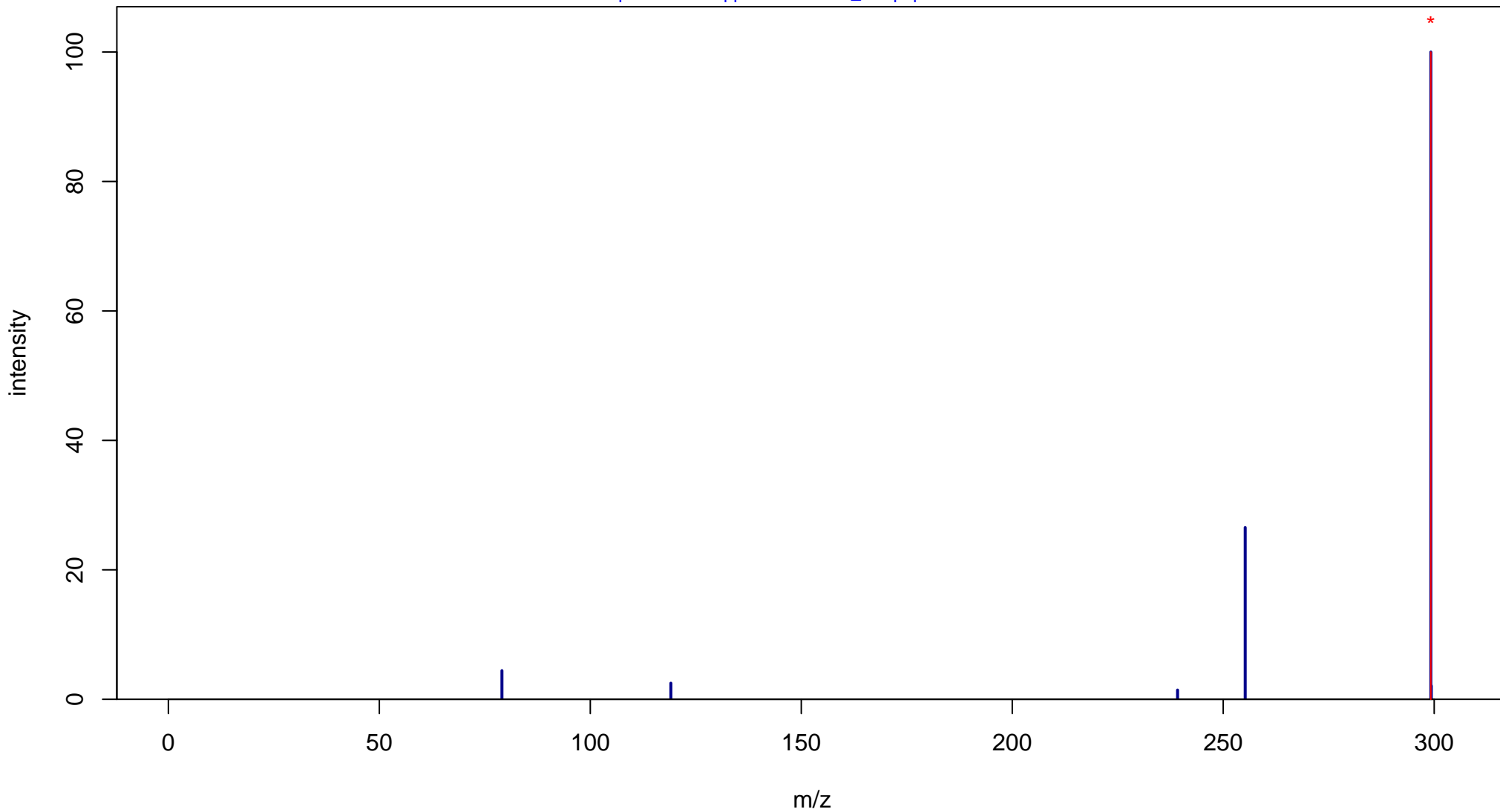
Retinoic acid

Mass: 300.2089 Formula: C₂₀H₂₈O₂

mode: - collisionE: 10V

METLIN ID: 2277 SIGMA Prod: R2625

http://metlin.scripps.edu/metabo_info.php?molid=2277



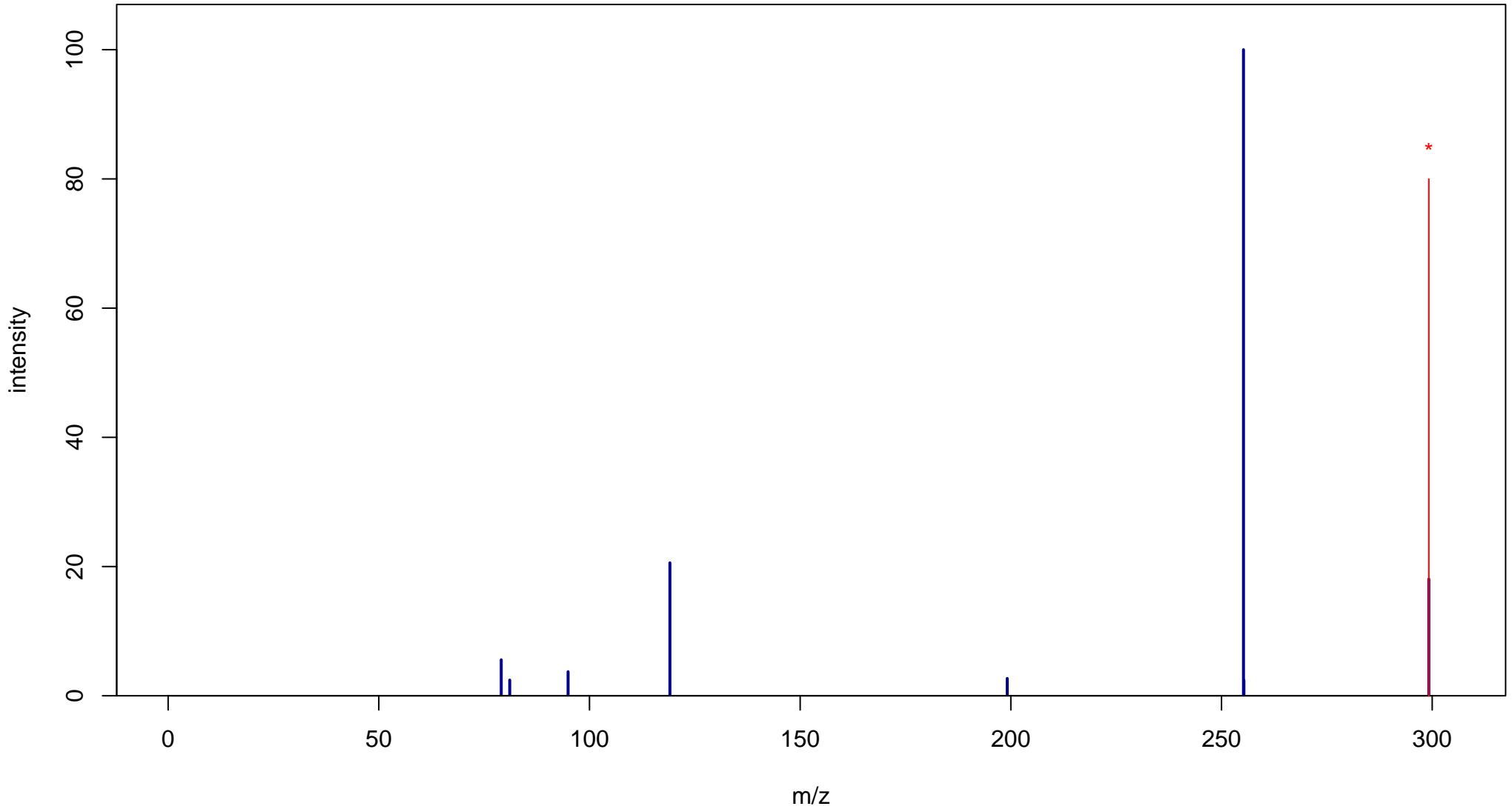
Retinoic acid

Mass: 300.2089 Formula: C₂₀H₂₈O₂

mode: - collisionE: 20V

METLIN ID: 2277 SIGMA Prod: R2625

http://metlin.scripps.edu/metabo_info.php?molid=2277



Retinoic acid

Mass: 300.2089 Formula: C₂₀H₂₈O₂

mode: - collisionE: 40V

METLIN ID: 2277 SIGMA Prod: R2625

http://metlin.scripps.edu/metabo_info.php?molid=2277

