

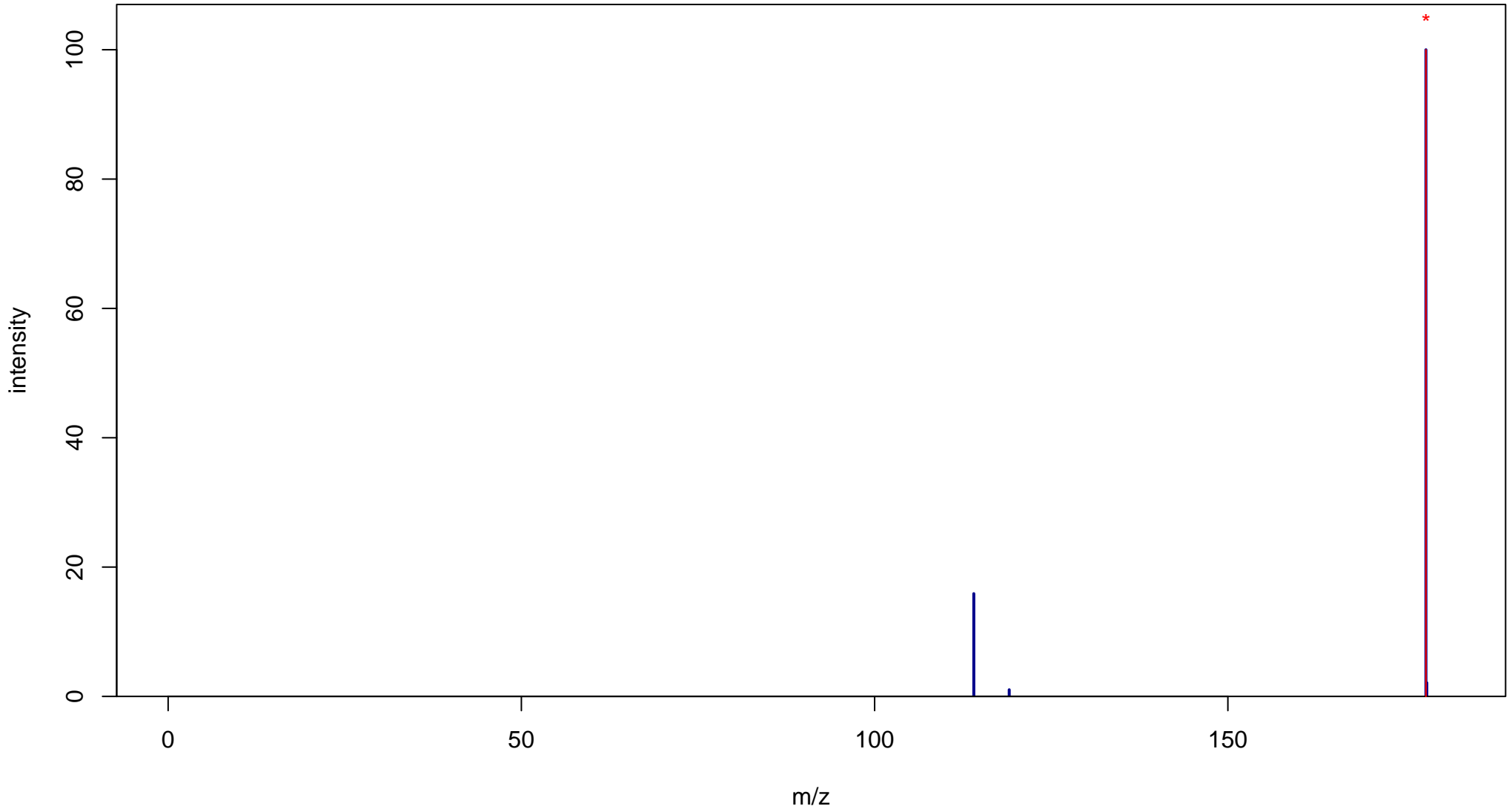
# DL-Sulforaphane

Mass: 177.0282 Formula: C<sub>6</sub>H<sub>11</sub>NOS<sub>2</sub>

mode: + collisionE: 0V

METLIN ID: 58318 SIGMA Prod: S4441

[http://metlin.scripps.edu/metabo\\_info.php?molid=58318](http://metlin.scripps.edu/metabo_info.php?molid=58318)



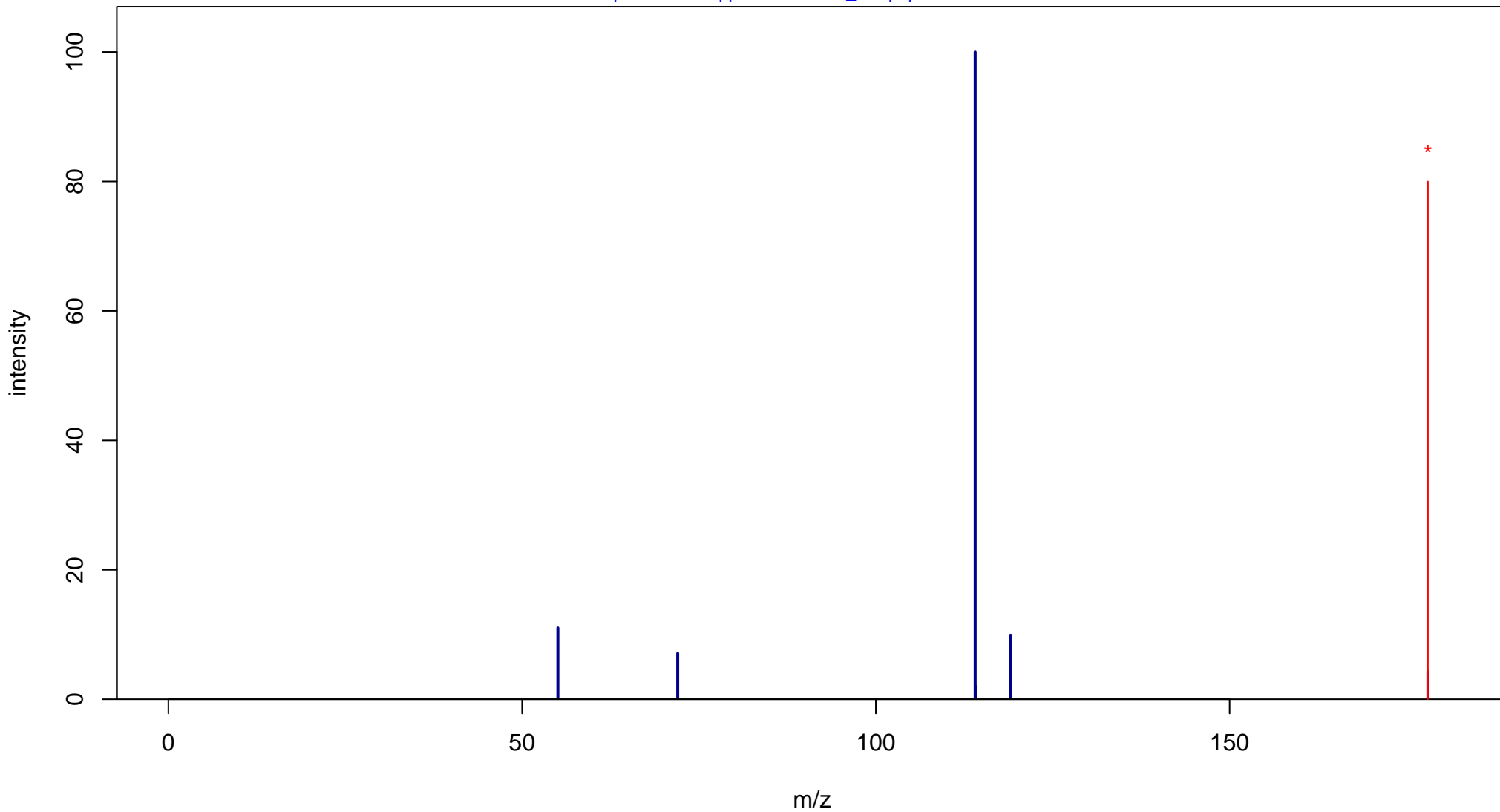
# DL-Sulforaphane

Mass: 177.0282 Formula: C<sub>6</sub>H<sub>11</sub>NOS<sub>2</sub>

mode: + collisionE: 10V

METLIN ID: 58318 SIGMA Prod: S4441

[http://metlin.scripps.edu/metabo\\_info.php?molid=58318](http://metlin.scripps.edu/metabo_info.php?molid=58318)



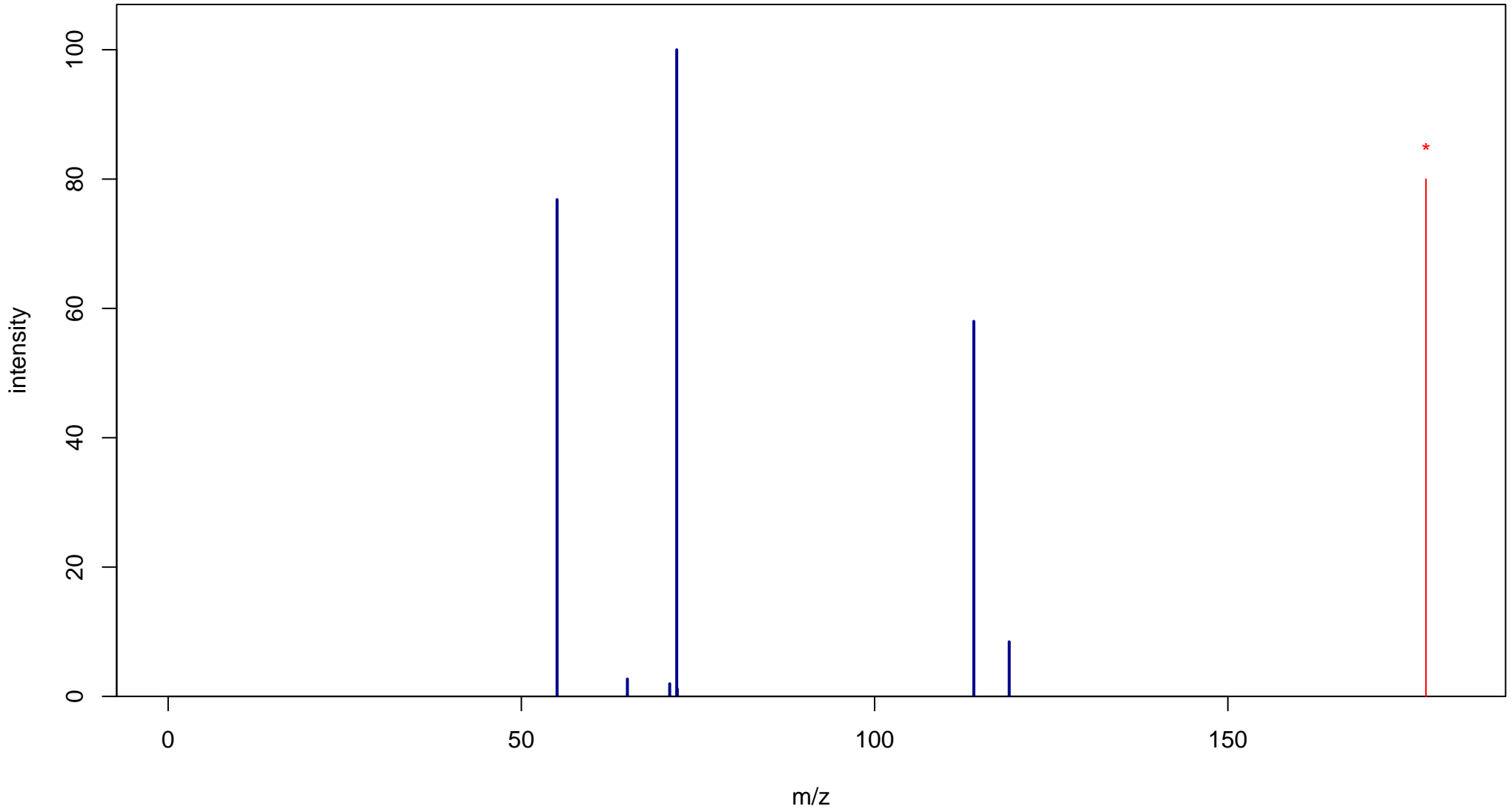
# DL-Sulforaphane

Mass: 177.0282 Formula: C<sub>6</sub>H<sub>11</sub>NOS<sub>2</sub>

mode: + collisionE: 20V

METLIN ID: 58318 SIGMA Prod: S4441

[http://metlin.scripps.edu/metabo\\_info.php?molid=58318](http://metlin.scripps.edu/metabo_info.php?molid=58318)



# DL-Sulforaphane

Mass: 177.0282 Formula: C<sub>6</sub>H<sub>11</sub>NOS<sub>2</sub>

mode: + collisionE: 40V

METLIN ID: 58318 SIGMA Prod: S4441

[http://metlin.scripps.edu/metabo\\_info.php?molid=58318](http://metlin.scripps.edu/metabo_info.php?molid=58318)

