

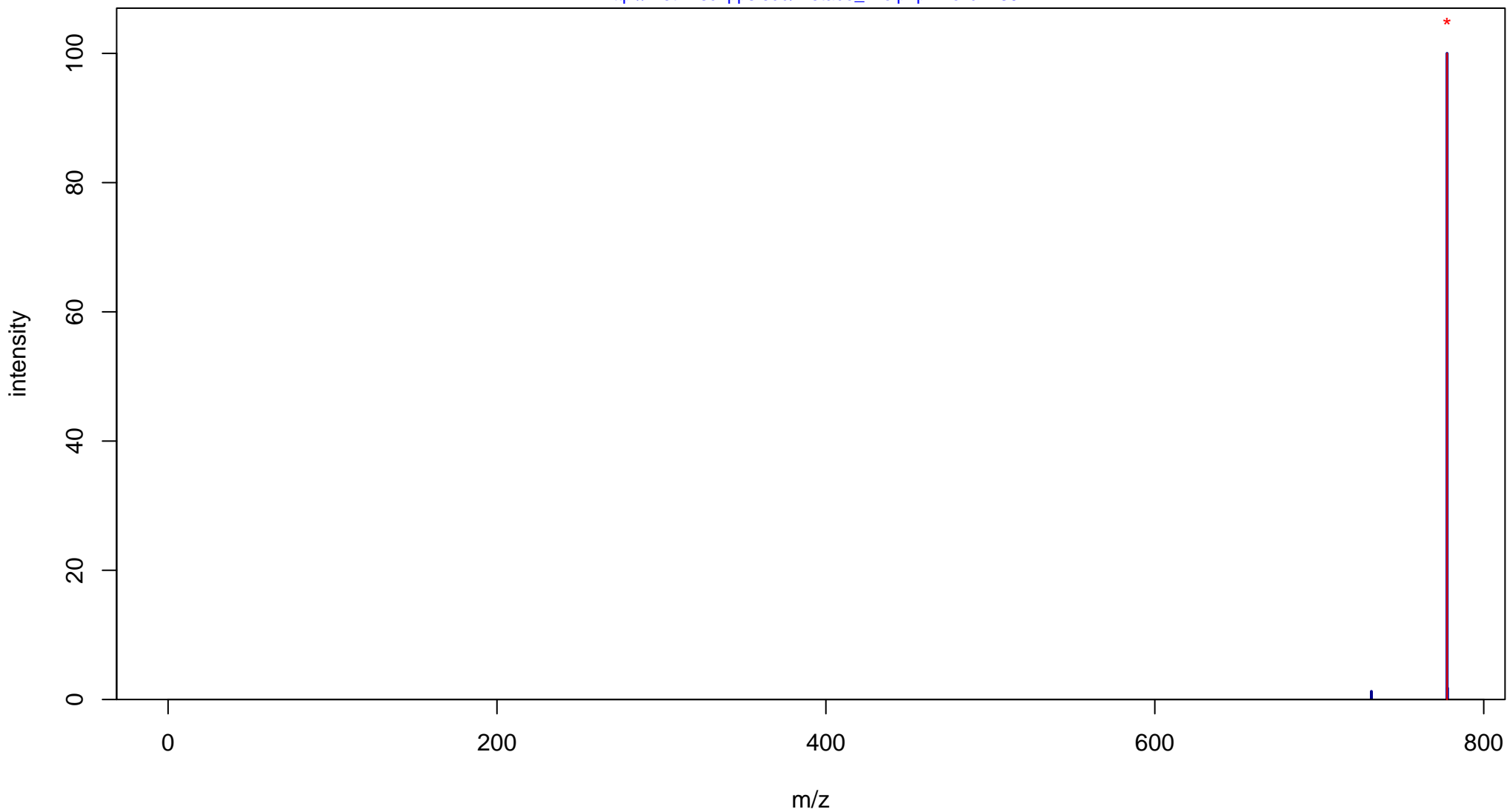
L-Thyroxine

Mass: 776.6867 Formula: C₁₅H₁₁I₄NO₄

mode: + collisionE: 0V

METLIN ID: 439 SIGMA Prod: T2376

http://metlin.scripps.edu/metabo_info.php?molid=439



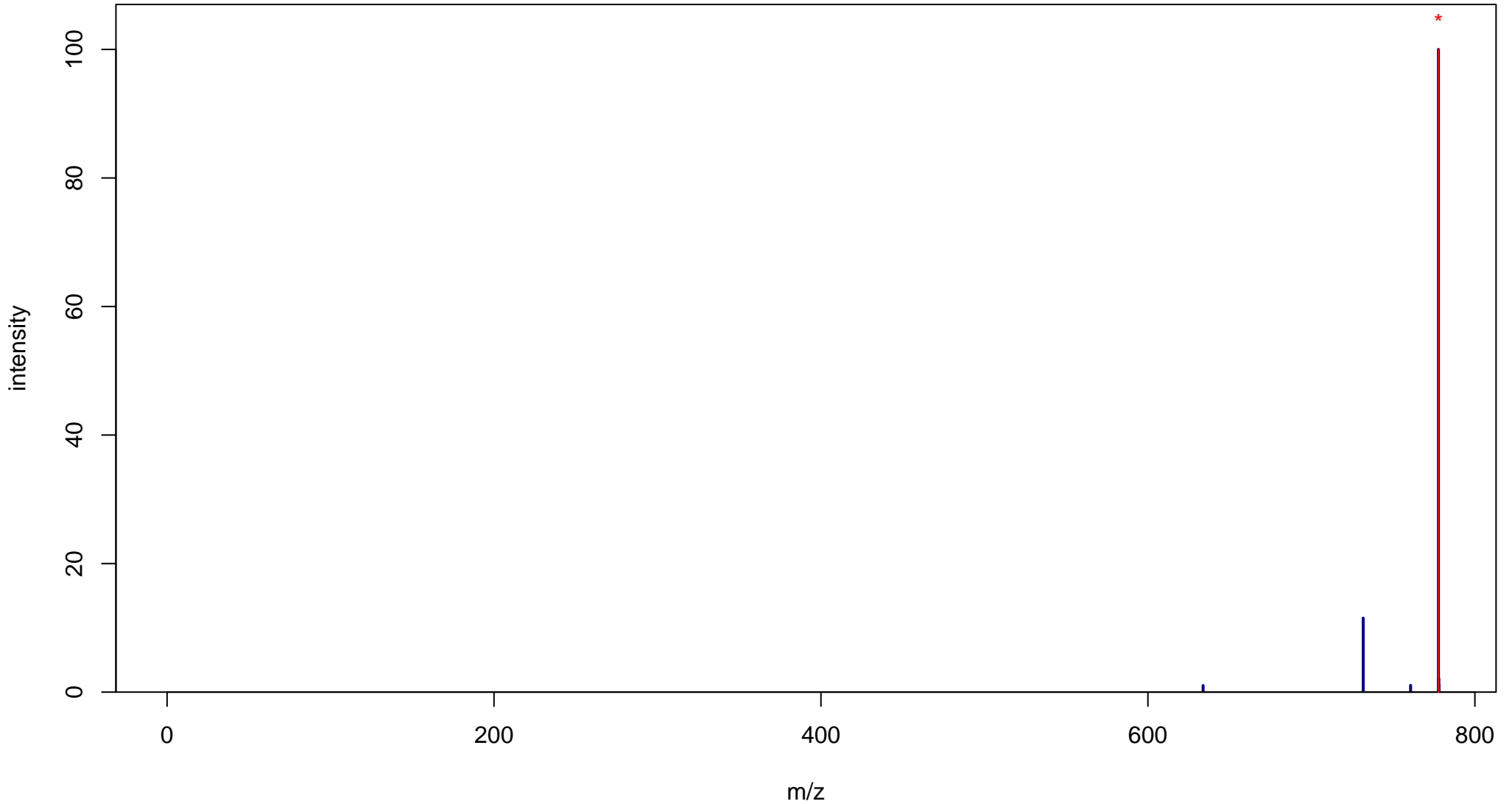
L-Thyroxine

Mass: 776.6867 Formula: C₁₅H₁₁I₄NO₄

mode: + collisionE: 10V

METLIN ID: 439 SIGMA Prod: T2376

http://metlin.scripps.edu/metabo_info.php?molid=439



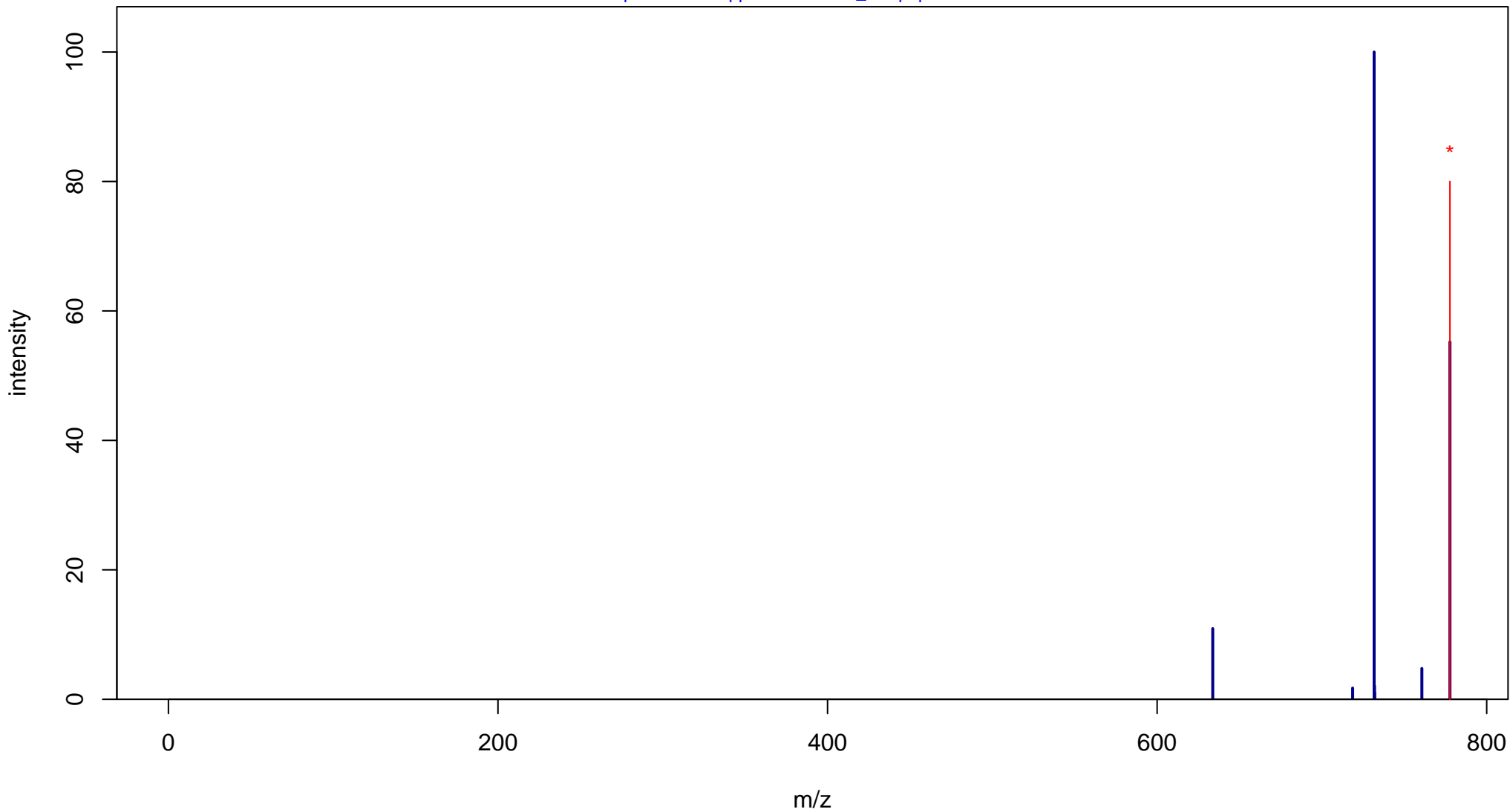
L-Thyroxine

Mass: 776.6867 Formula: C₁₅H₁₁I₄NO₄

mode: + collisionE: 20V

METLIN ID: 439 SIGMA Prod: T2376

http://metlin.scripps.edu/metabo_info.php?molid=439



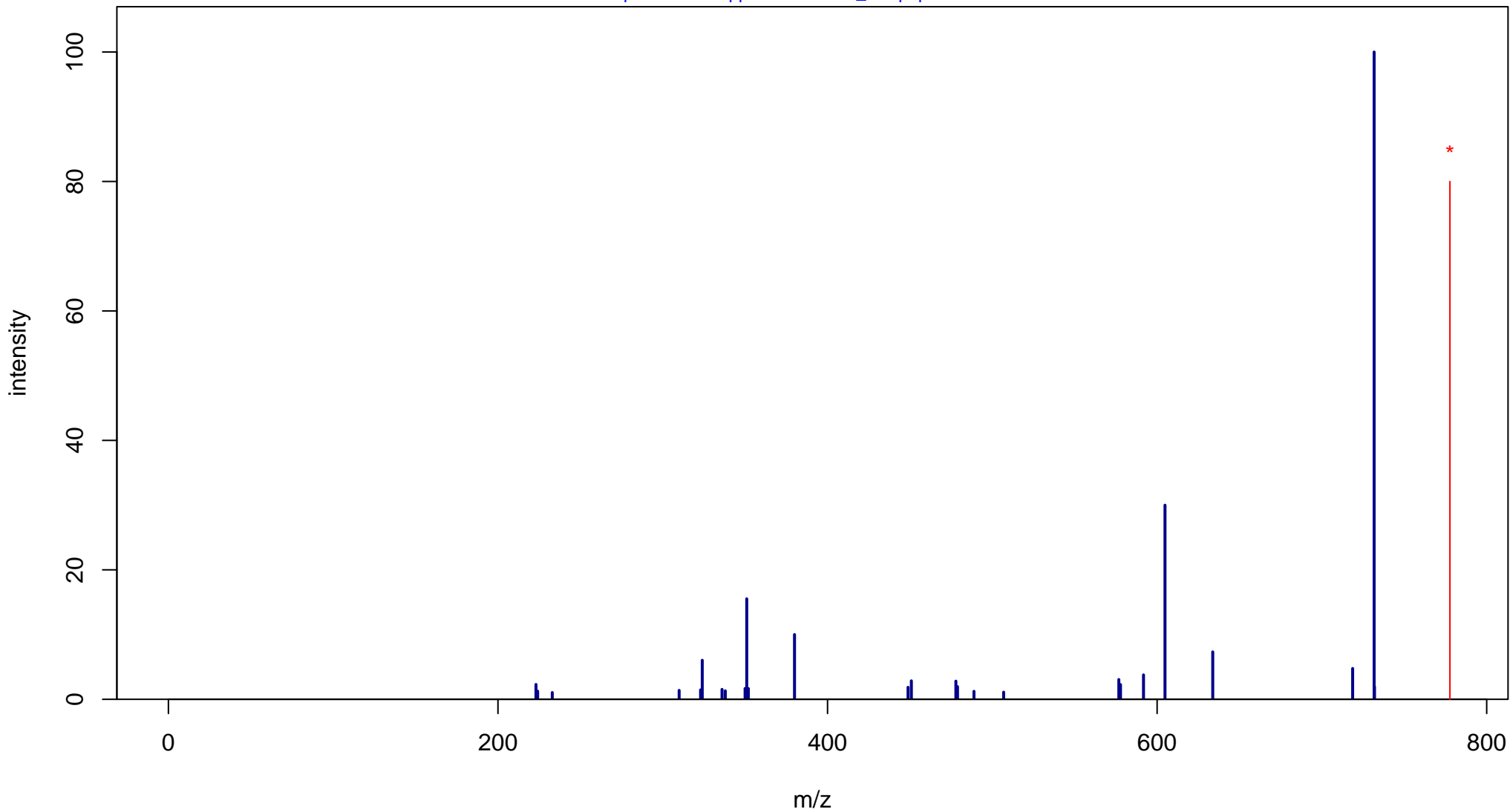
L-Thyroxine

Mass: 776.6867 Formula: C₁₅H₁₁I₄NO₄

mode: + collisionE: 40V

METLIN ID: 439 SIGMA Prod: T2376

http://metlin.scripps.edu/metabo_info.php?molid=439



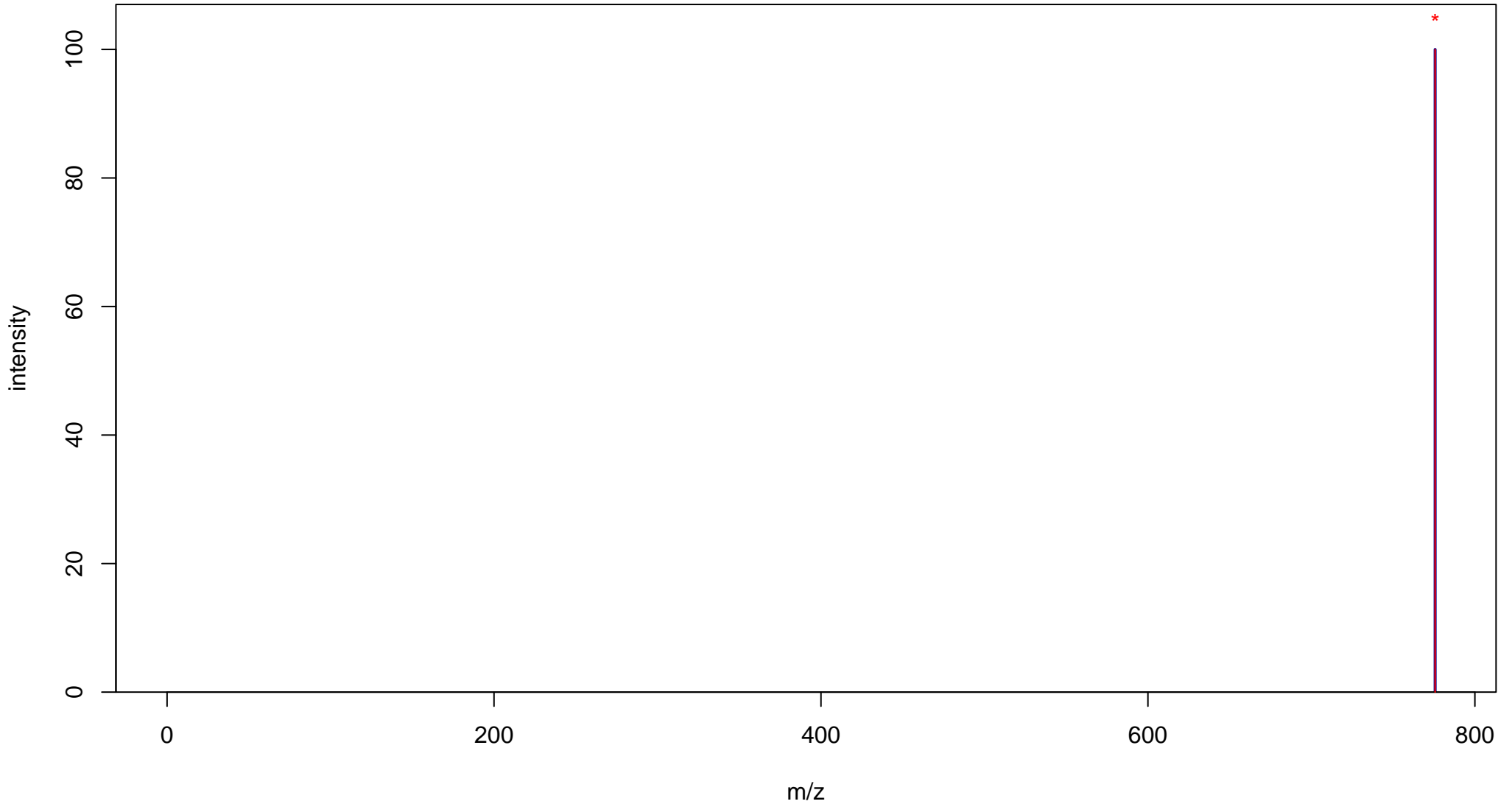
L-Thyroxine

Mass: 776.6867 Formula: C₁₅H₁₁I₄NO₄

mode: - collisionE: 0V

METLIN ID: 439 SIGMA Prod: T2376

http://metlin.scripps.edu/metabo_info.php?molid=439



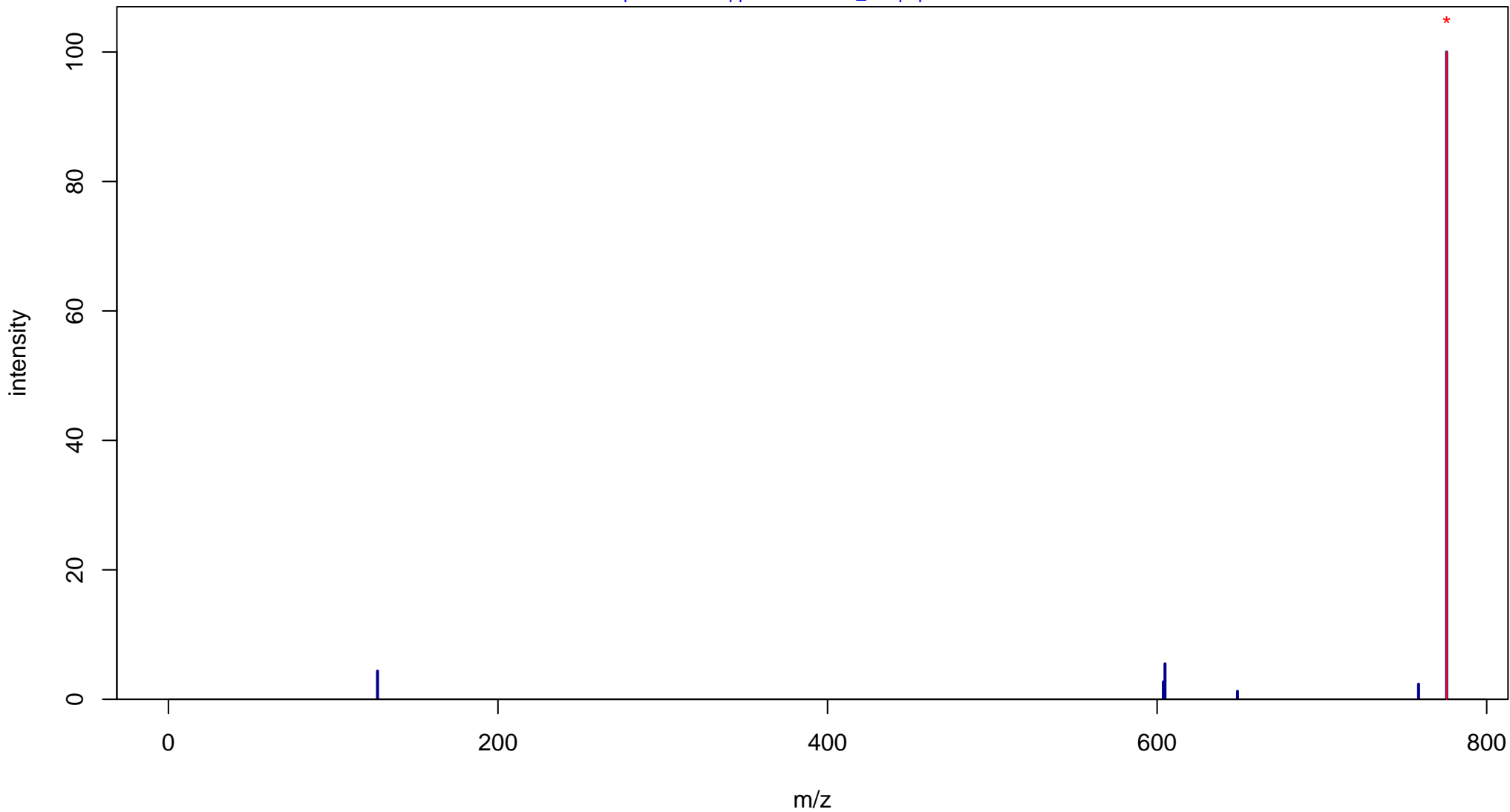
L-Thyroxine

Mass: 776.6867 Formula: C₁₅H₁₁I₄NO₄

mode: - collisionE: 10V

METLIN ID: 439 SIGMA Prod: T2376

http://metlin.scripps.edu/metabo_info.php?molid=439



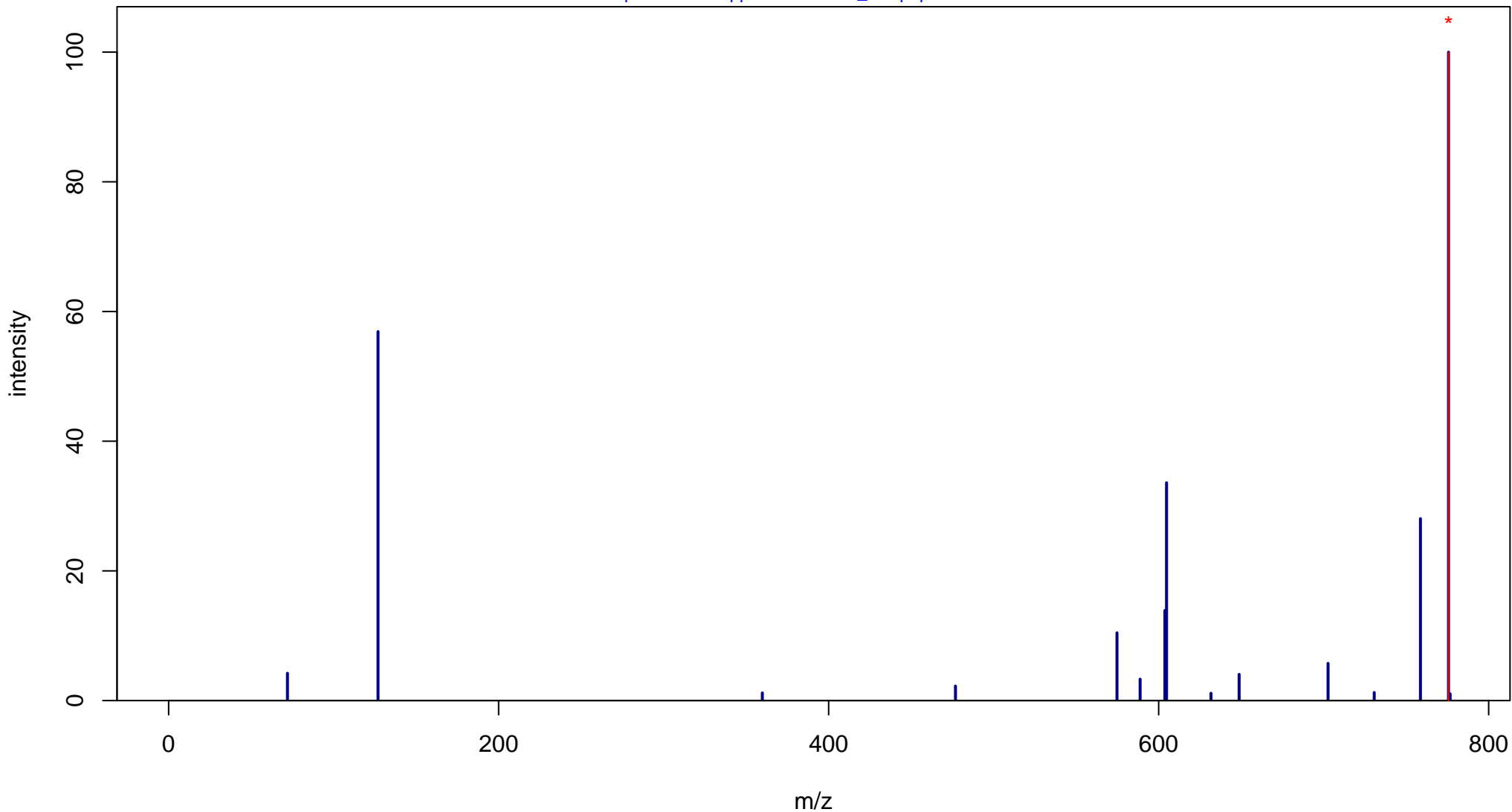
L-Thyroxine

Mass: 776.6867 Formula: C₁₅H₁₁I₄NO₄

mode: - collisionE: 20V

METLIN ID: 439 SIGMA Prod: T2376

http://metlin.scripps.edu/metabo_info.php?molid=439



L-Thyroxine

Mass: 776.6867 Formula: C₁₅H₁₁I₄NO₄

mode: - collisionE: 40V

METLIN ID: 439 SIGMA Prod: T2376

http://metlin.scripps.edu/metabo_info.php?molid=439

