

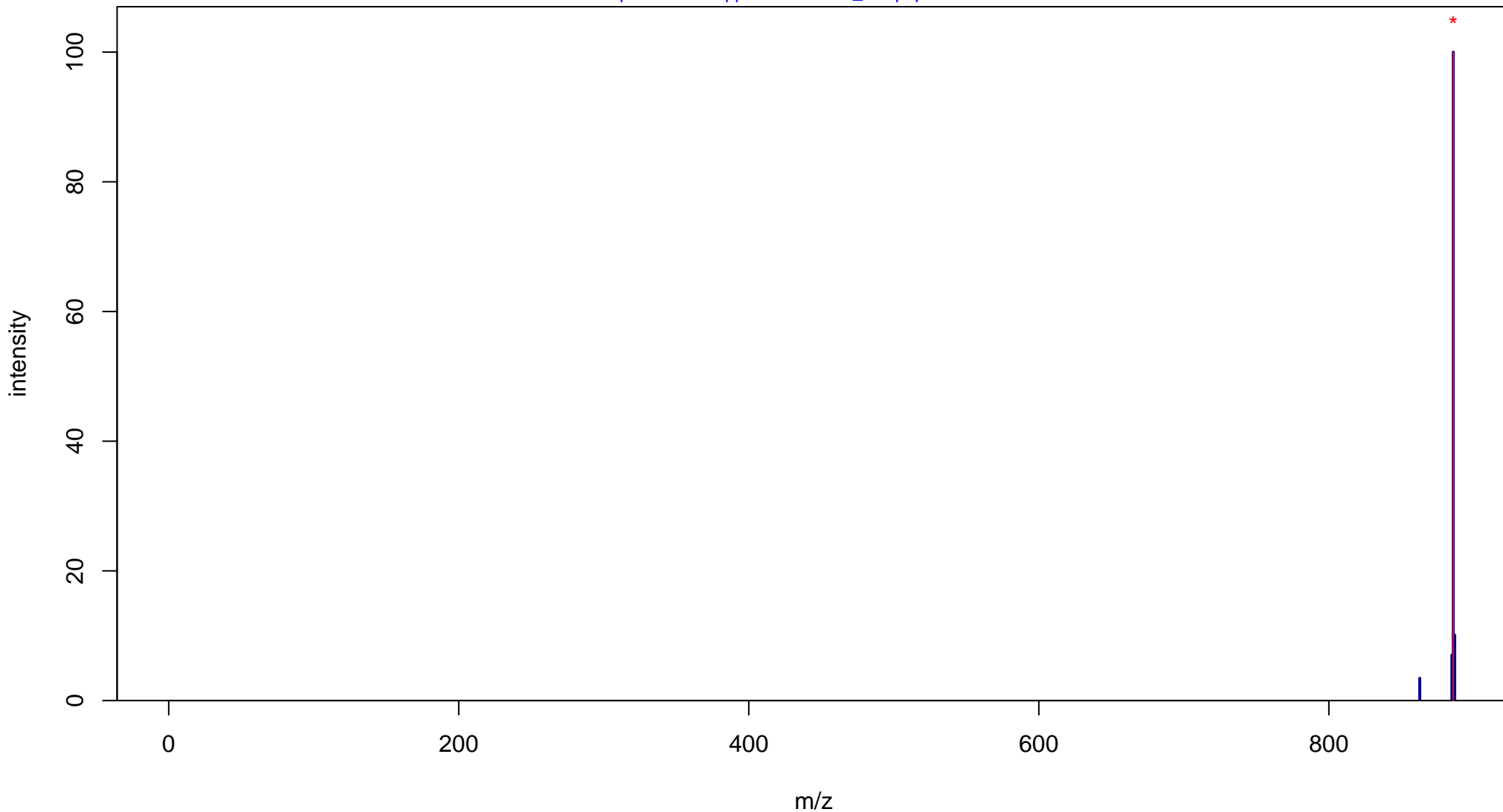
# TG(18:1(9Z)/18:1(9Z)/18:1(9Z))

Mass: 884.7833 Formula: C<sub>57</sub>H<sub>104</sub>O<sub>6</sub>

mode: + collisionE: 0V

METLIN ID: 4947 SIGMA Prod: T7140

[http://metlin.scripps.edu/metabo\\_info.php?molid=4947](http://metlin.scripps.edu/metabo_info.php?molid=4947)



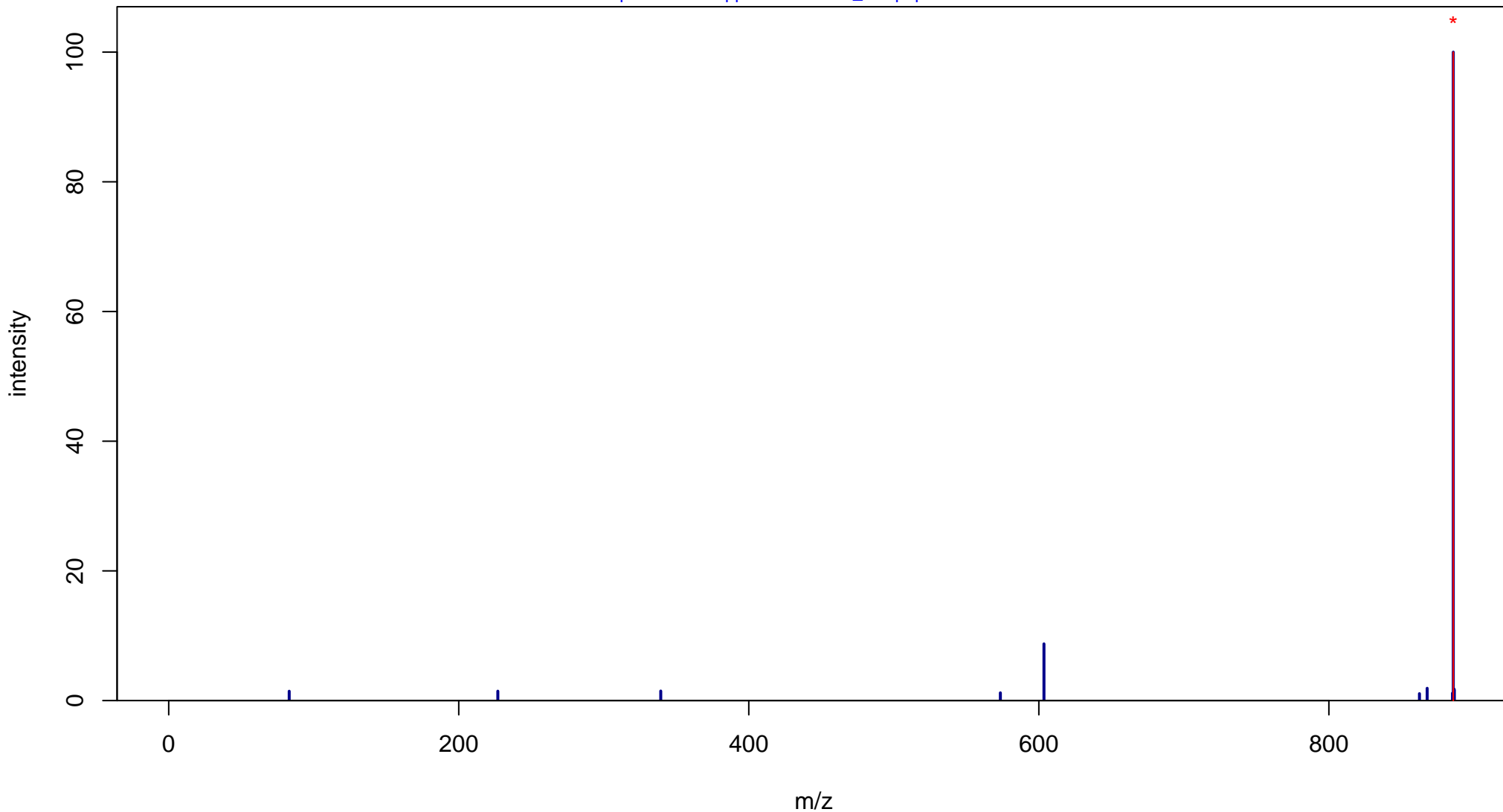
# TG(18:1(9Z)/18:1(9Z)/18:1(9Z))

Mass: 884.7833 Formula: C<sub>57</sub>H<sub>104</sub>O<sub>6</sub>

mode: + collisionE: 10V

METLIN ID: 4947 SIGMA Prod: T7140

[http://metlin.scripps.edu/metabo\\_info.php?molid=4947](http://metlin.scripps.edu/metabo_info.php?molid=4947)



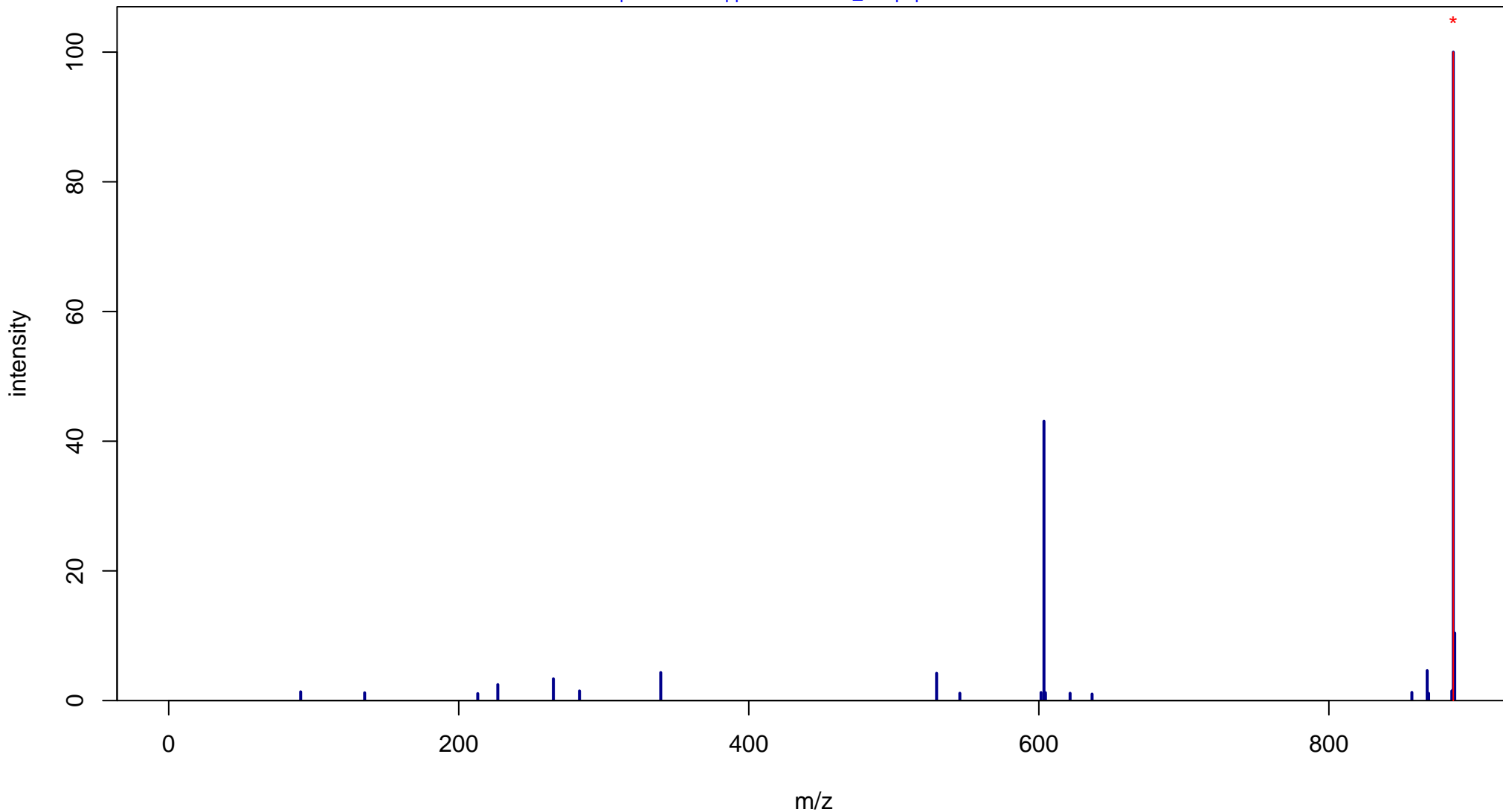
# TG(18:1(9Z)/18:1(9Z)/18:1(9Z))

Mass: 884.7833 Formula: C<sub>57</sub>H<sub>104</sub>O<sub>6</sub>

mode: + collisionE: 20V

METLIN ID: 4947 SIGMA Prod: T7140

[http://metlin.scripps.edu/metabo\\_info.php?molid=4947](http://metlin.scripps.edu/metabo_info.php?molid=4947)



# TG(18:1(9Z)/18:1(9Z)/18:1(9Z))

Mass: 884.7833 Formula: C<sub>57</sub>H<sub>104</sub>O<sub>6</sub>

mode: + collisionE: 40V

METLIN ID: 4947 SIGMA Prod: T7140

[http://metlin.scripps.edu/metabo\\_info.php?molid=4947](http://metlin.scripps.edu/metabo_info.php?molid=4947)

