

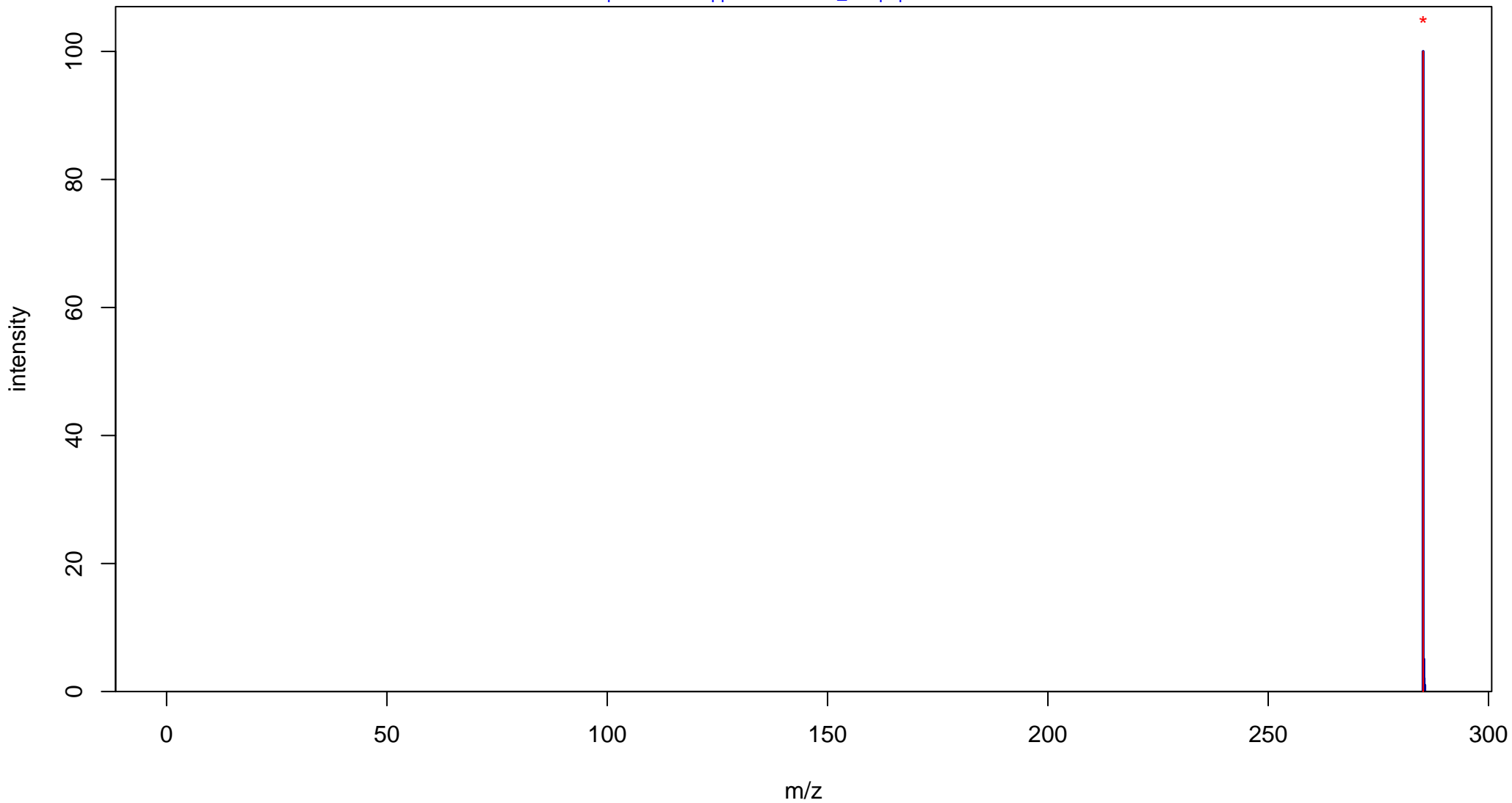
Tropicamide

Mass: 284.1525 Formula: C₁₇H₂₀N₂O₂

mode: + collisionE: 0V

METLIN ID: 43367 SIGMA Prod: T9778

http://metlin.scripps.edu/metabo_info.php?molid=43367



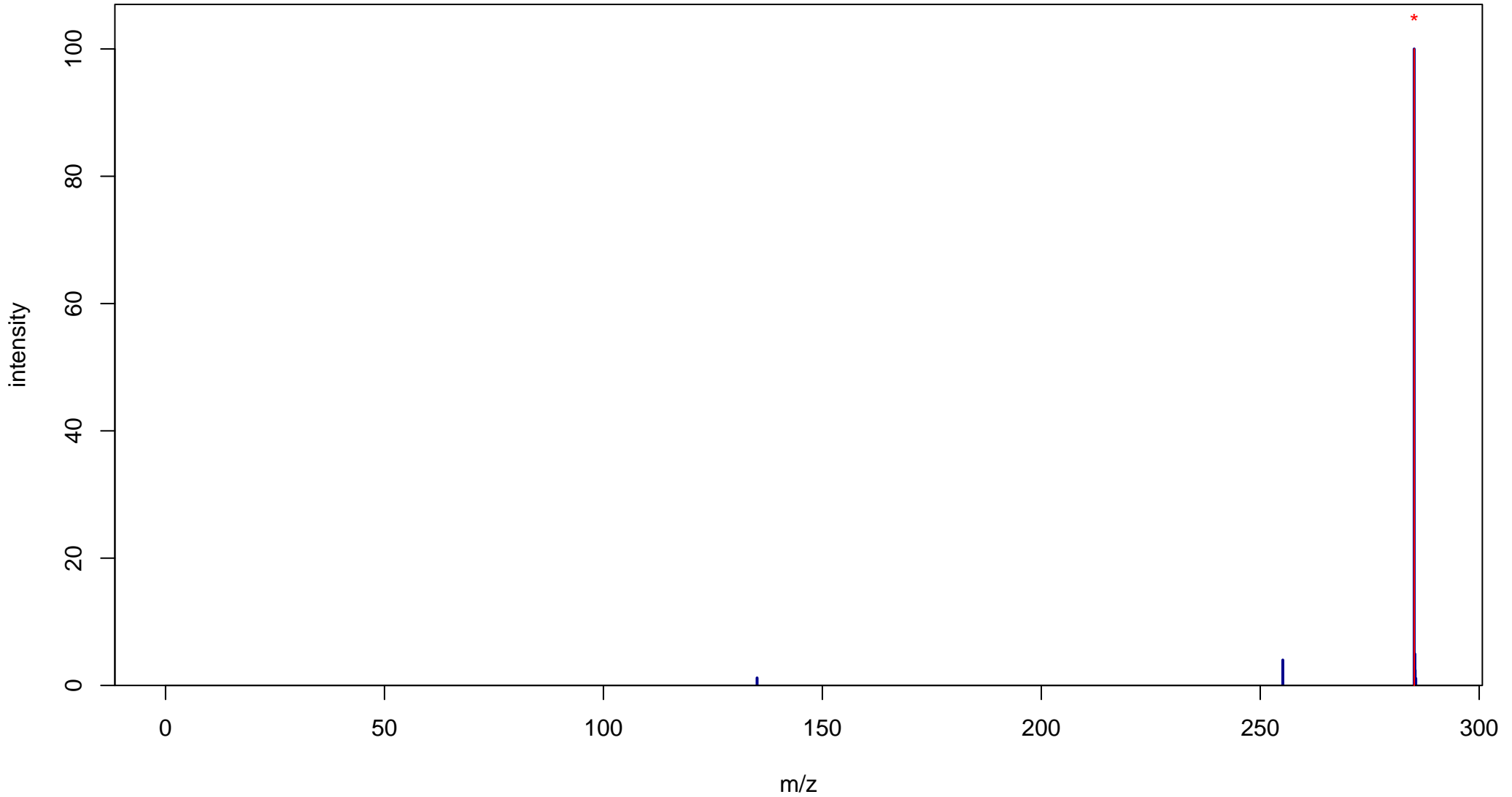
Tropicamide

Mass: 284.1525 Formula: C₁₇H₂₀N₂O₂

mode: + collisionE: 10V

METLIN ID: 43367 SIGMA Prod: T9778

http://metlin.scripps.edu/metabo_info.php?molid=43367



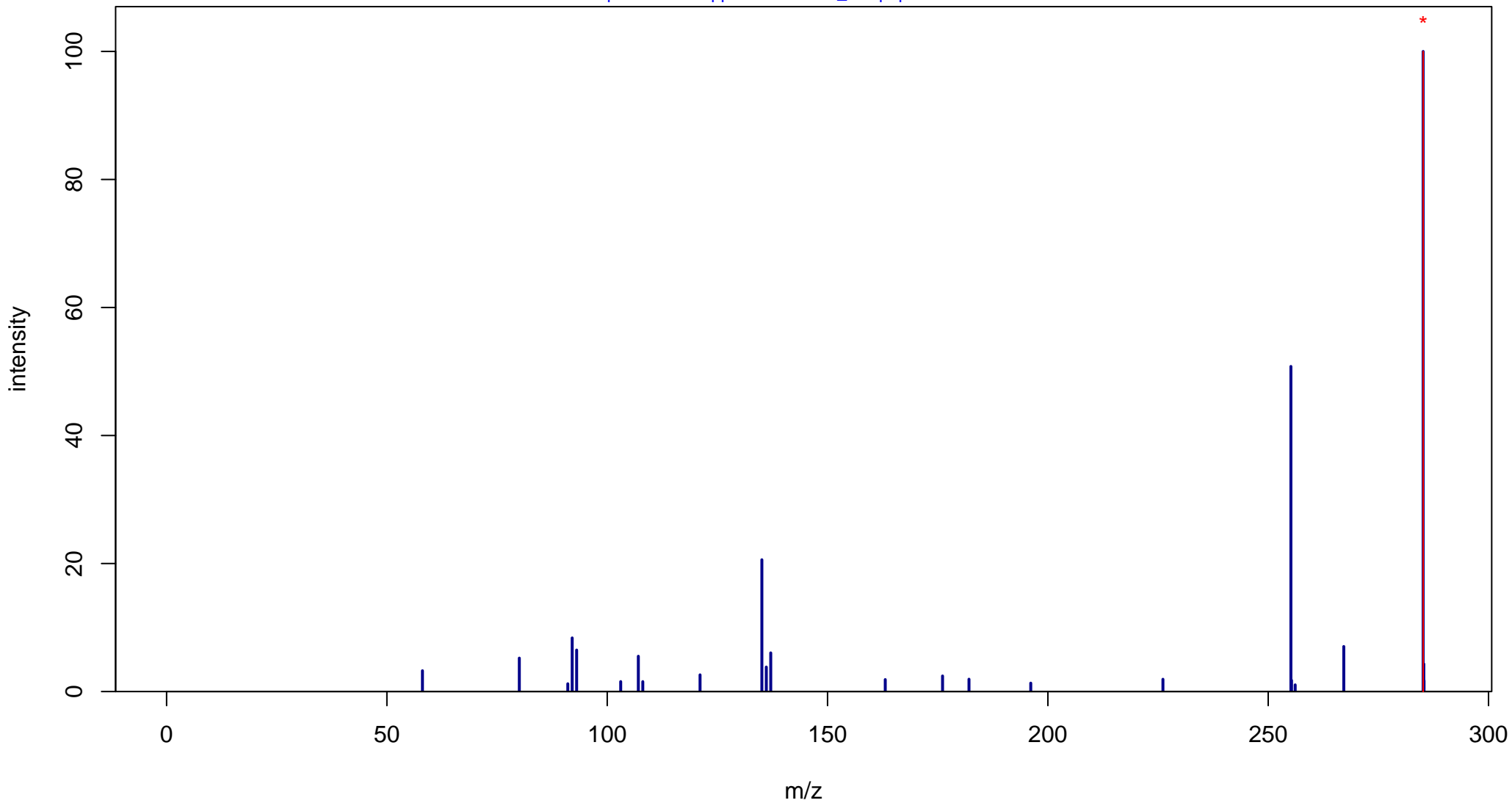
Tropicamide

Mass: 284.1525 Formula: C₁₇H₂₀N₂O₂

mode: + collisionE: 20V

METLIN ID: 43367 SIGMA Prod: T9778

http://metlin.scripps.edu/metabo_info.php?molid=43367



Tropicamide

Mass: 284.1525 Formula: C₁₇H₂₀N₂O₂

mode: + collisionE: 40V

METLIN ID: 43367 SIGMA Prod: T9778

http://metlin.scripps.edu/metabo_info.php?molid=43367

