

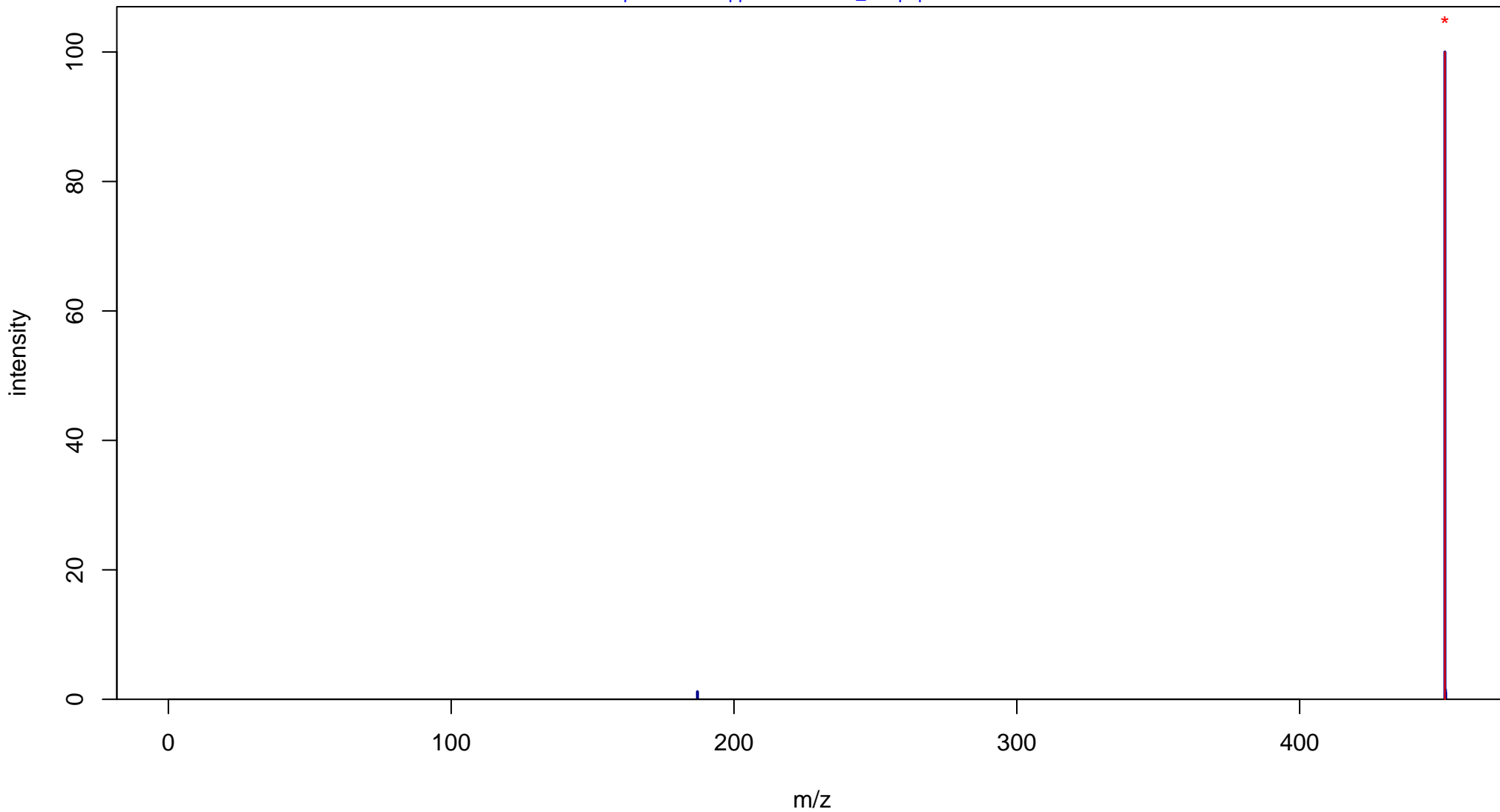
Phylloquinone

Mass: 450.3498 Formula: C₃₁H₄₆O₂

mode: + collisionE: 0V

METLIN ID: 228 SIGMA Prod: V3501

http://metlin.scripps.edu/metabo_info.php?molid=228



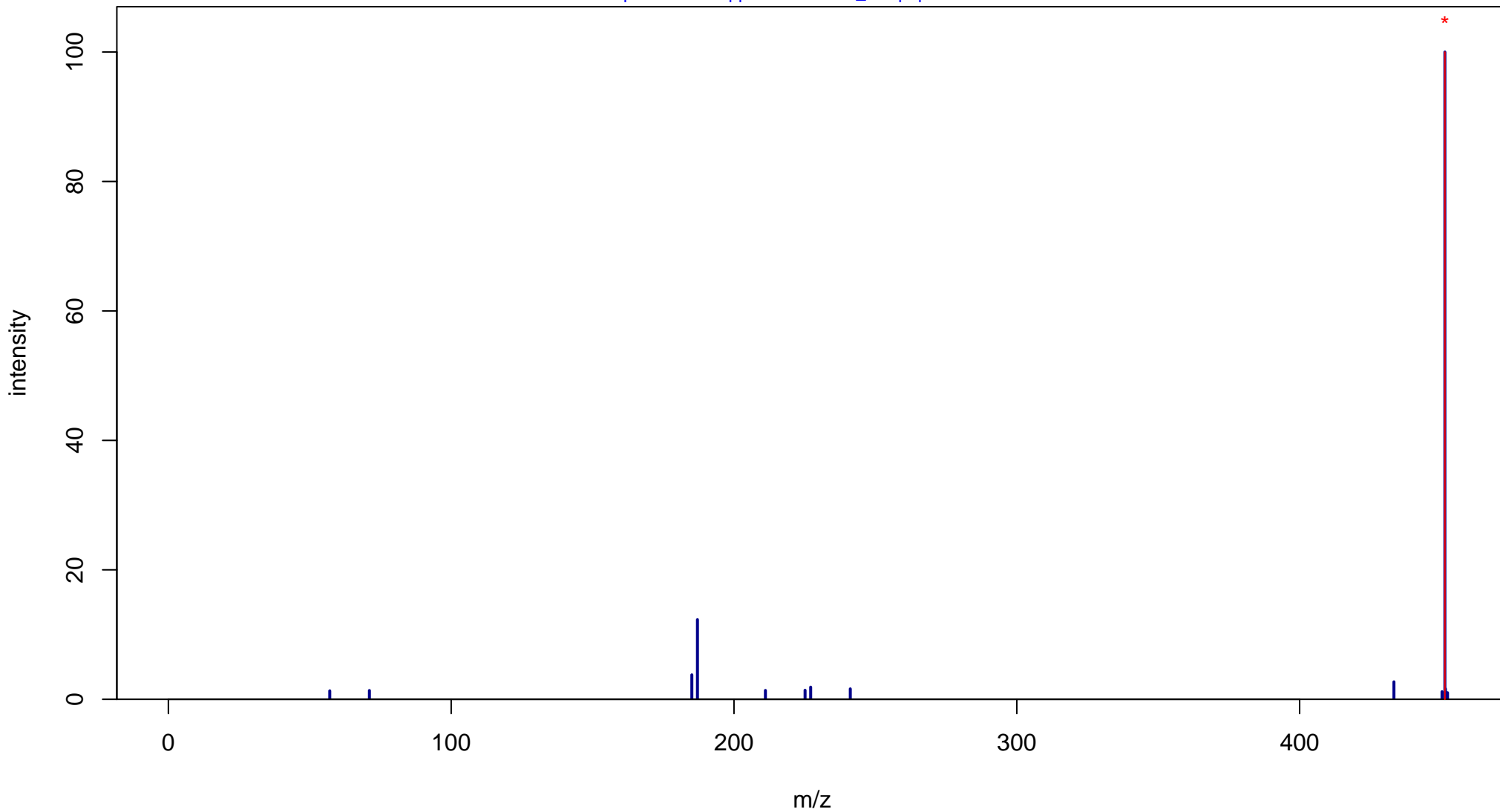
Phylloquinone

Mass: 450.3498 Formula: C₃₁H₄₆O₂

mode: + collisionE: 10V

METLIN ID: 228 SIGMA Prod: V3501

http://metlin.scripps.edu/metabo_info.php?molid=228



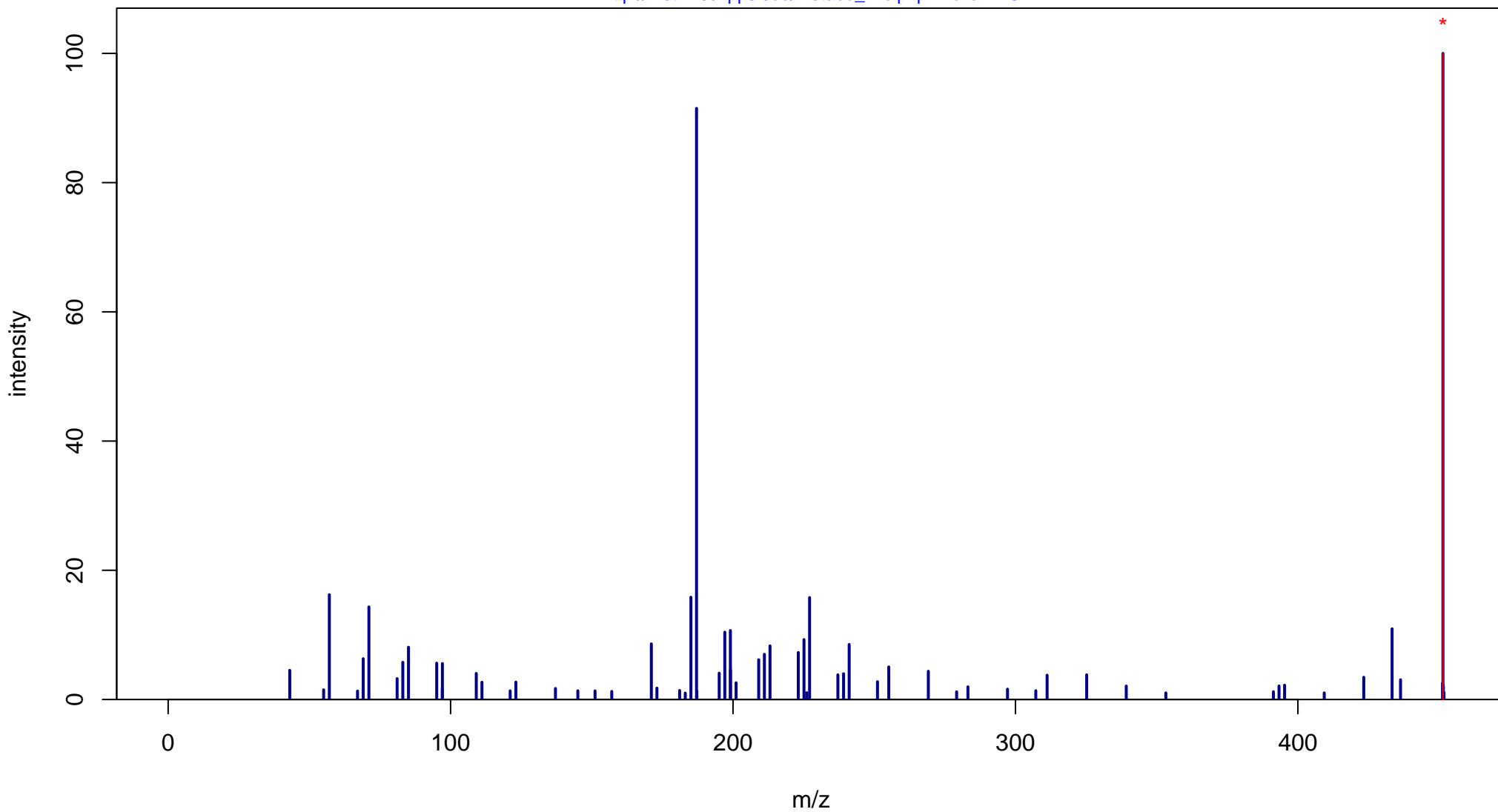
Phylloquinone

Mass: 450.3498 Formula: C₃₁H₄₆O₂

mode: + collisionE: 20V

METLIN ID: 228 SIGMA Prod: V3501

http://metlin.scripps.edu/metabo_info.php?molid=228



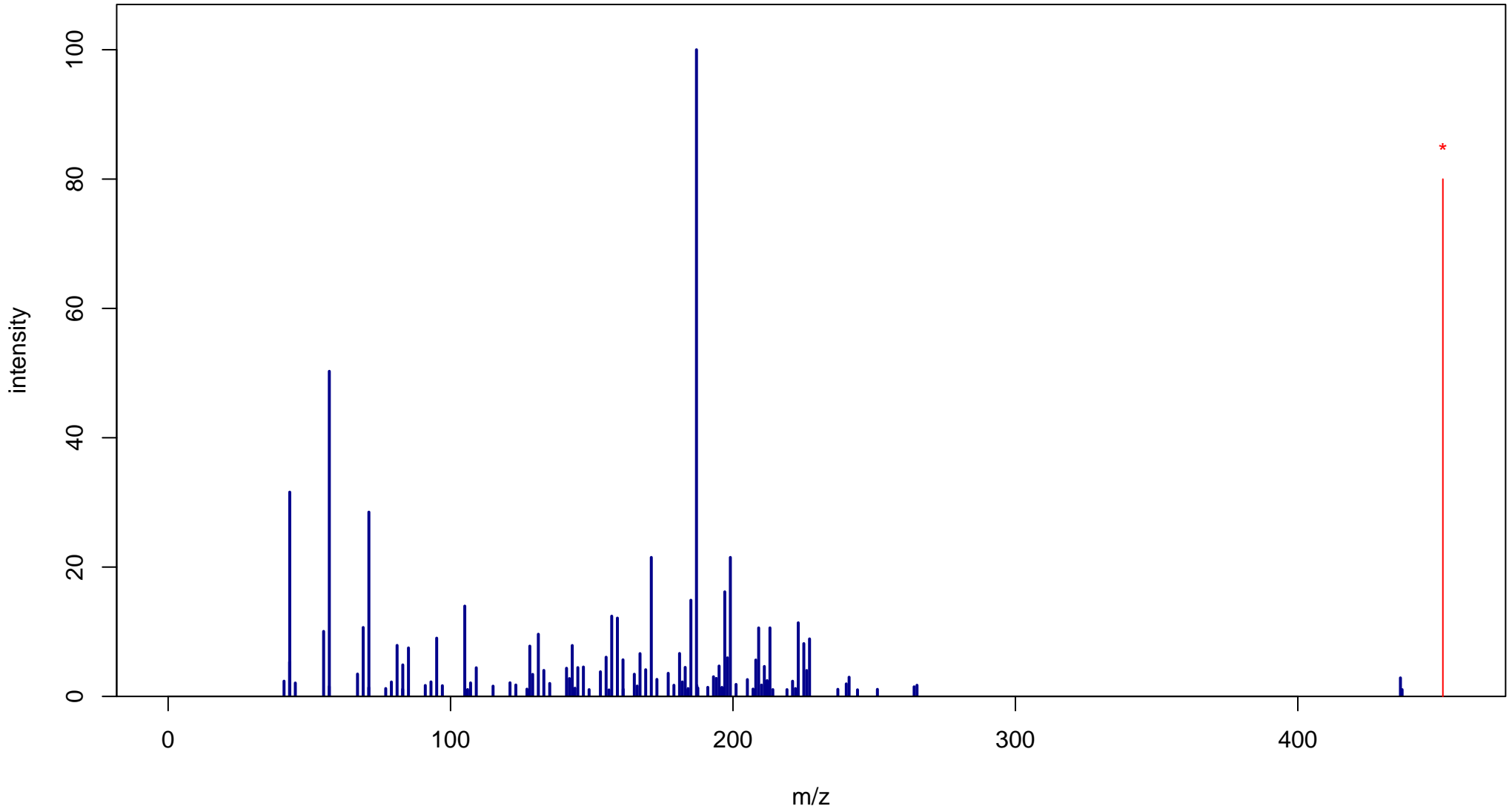
Phylloquinone

Mass: 450.3498 Formula: C₃₁H₄₆O₂

mode: + collisionE: 40V

METLIN ID: 228 SIGMA Prod: V3501

http://metlin.scripps.edu/metabo_info.php?molid=228



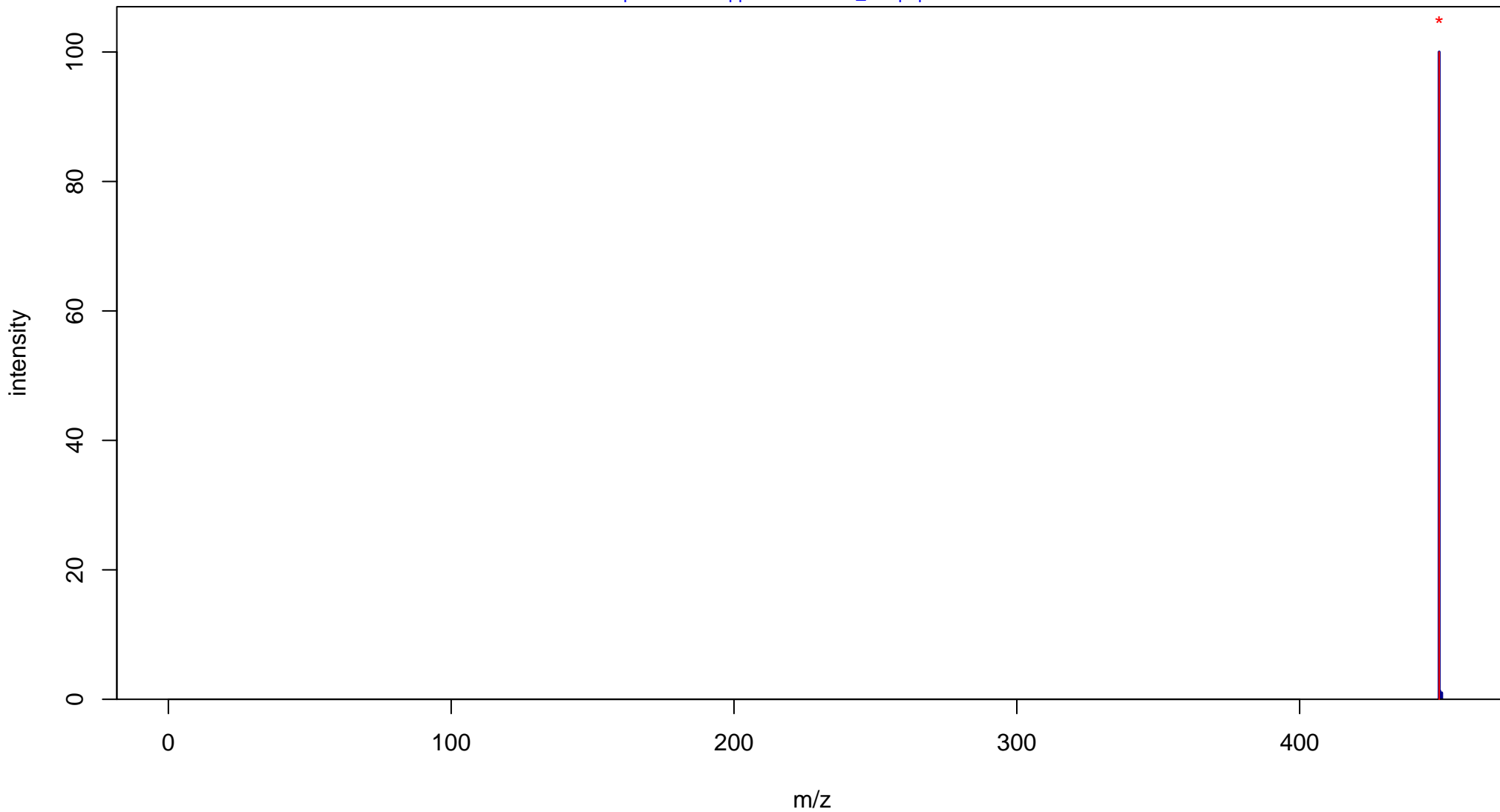
Phylloquinone

Mass: 450.3498 Formula: C₃₁H₄₆O₂

mode: - collisionE: 0V

METLIN ID: 228 SIGMA Prod: V3501

http://metlin.scripps.edu/metabo_info.php?molid=228



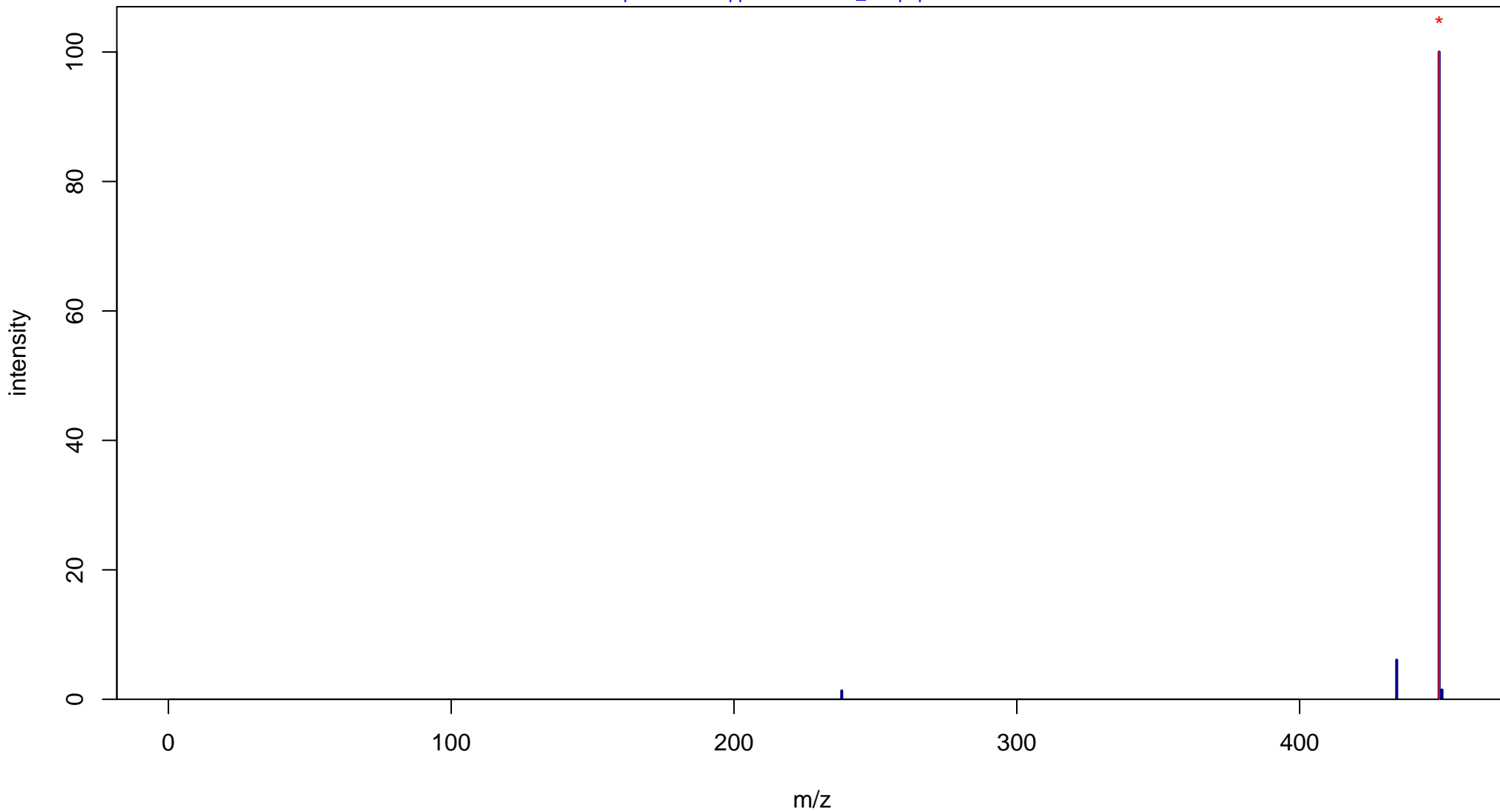
Phylloquinone

Mass: 450.3498 Formula: C₃₁H₄₆O₂

mode: - collisionE: 10V

METLIN ID: 228 SIGMA Prod: V3501

http://metlin.scripps.edu/metabo_info.php?molid=228



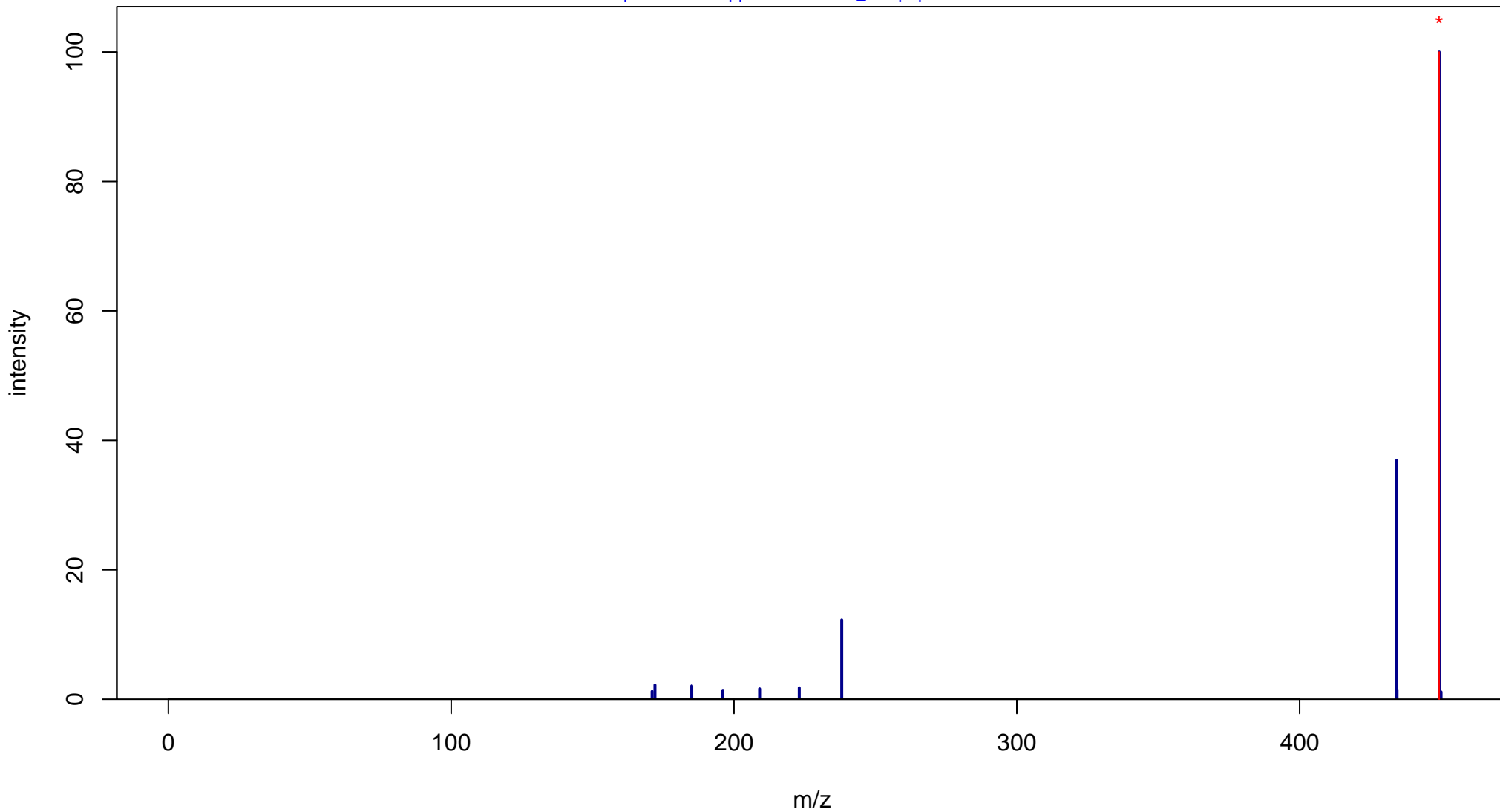
Phylloquinone

Mass: 450.3498 Formula: C₃₁H₄₆O₂

mode: - collisionE: 20V

METLIN ID: 228 SIGMA Prod: V3501

http://metlin.scripps.edu/metabo_info.php?molid=228



Phylloquinone

Mass: 450.3498 Formula: C₃₁H₄₆O₂

mode: - collisionE: 40V

METLIN ID: 228 SIGMA Prod: V3501

http://metlin.scripps.edu/metabo_info.php?molid=228

