

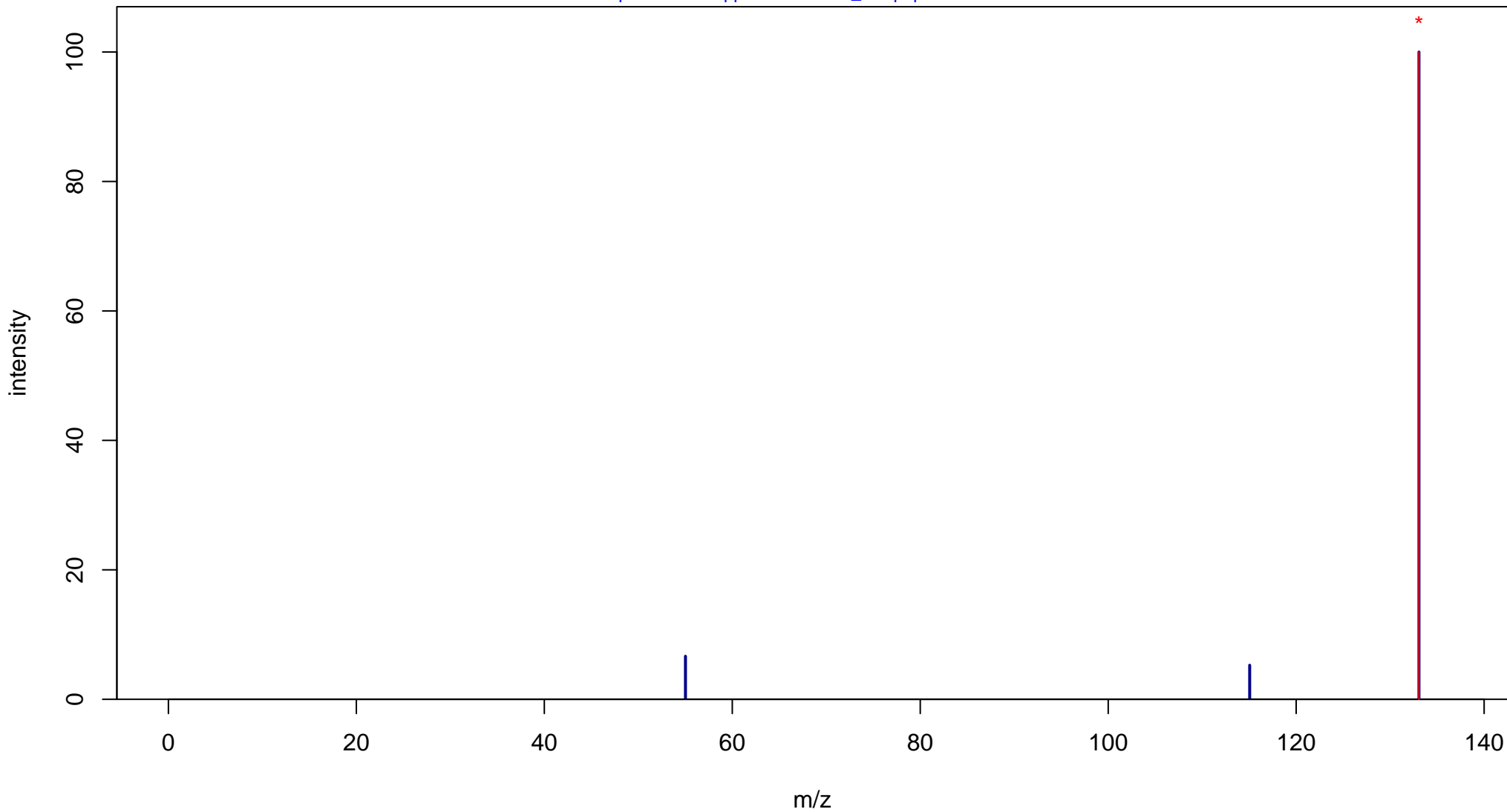
# Cinnamaldehyde

Mass: 132.0575 Formula: C<sub>9</sub>H<sub>8</sub>O

mode: + collisionE: 0V

METLIN ID: 6931 SIGMA Prod: W228613

[http://metlin.scripps.edu/metabo\\_info.php?molid=6931](http://metlin.scripps.edu/metabo_info.php?molid=6931)



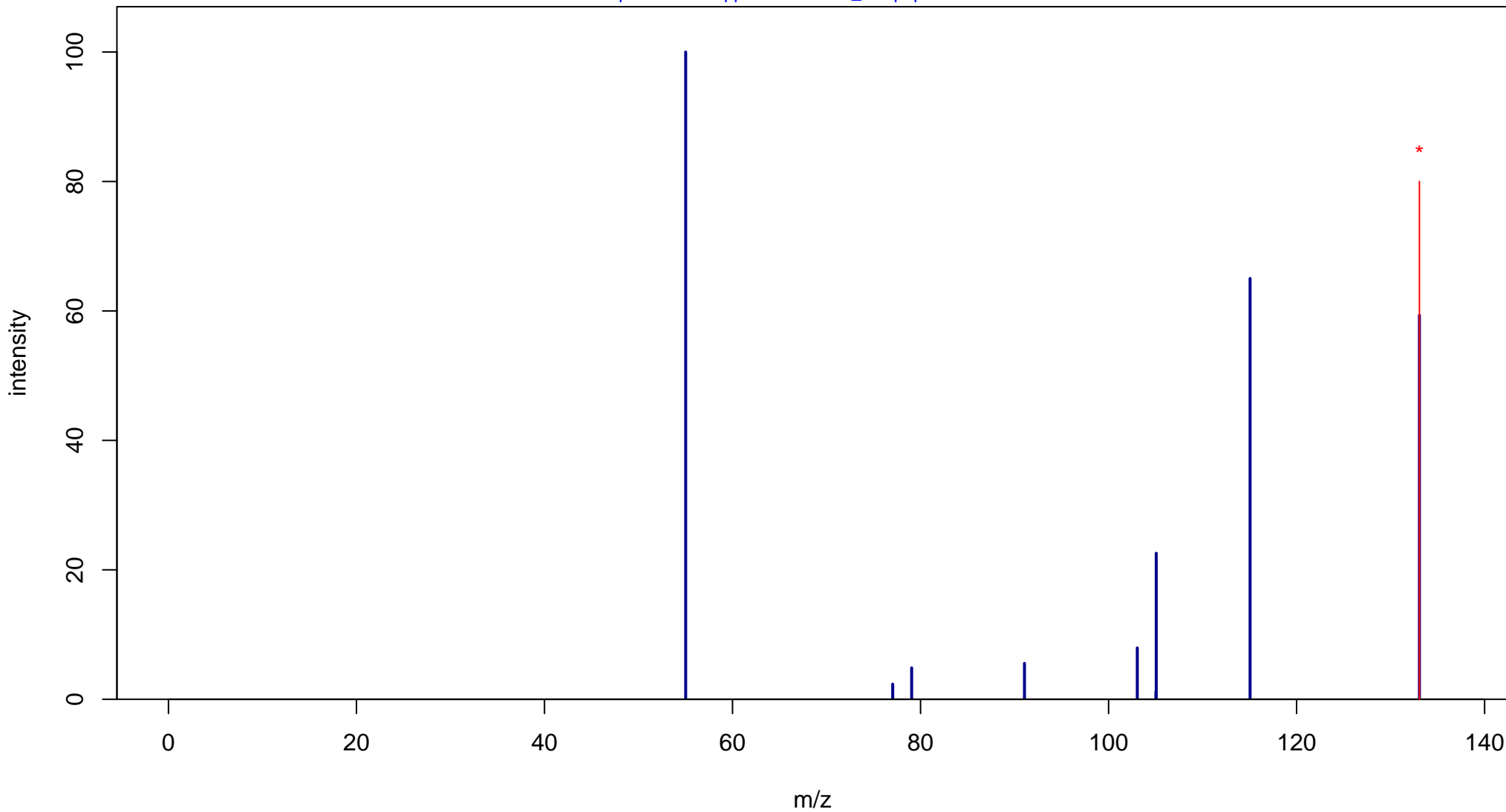
# Cinnamaldehyde

Mass: 132.0575 Formula: C<sub>9</sub>H<sub>8</sub>O

mode: + collisionE: 10V

METLIN ID: 6931 SIGMA Prod: W228613

[http://metlin.scripps.edu/metabo\\_info.php?molid=6931](http://metlin.scripps.edu/metabo_info.php?molid=6931)



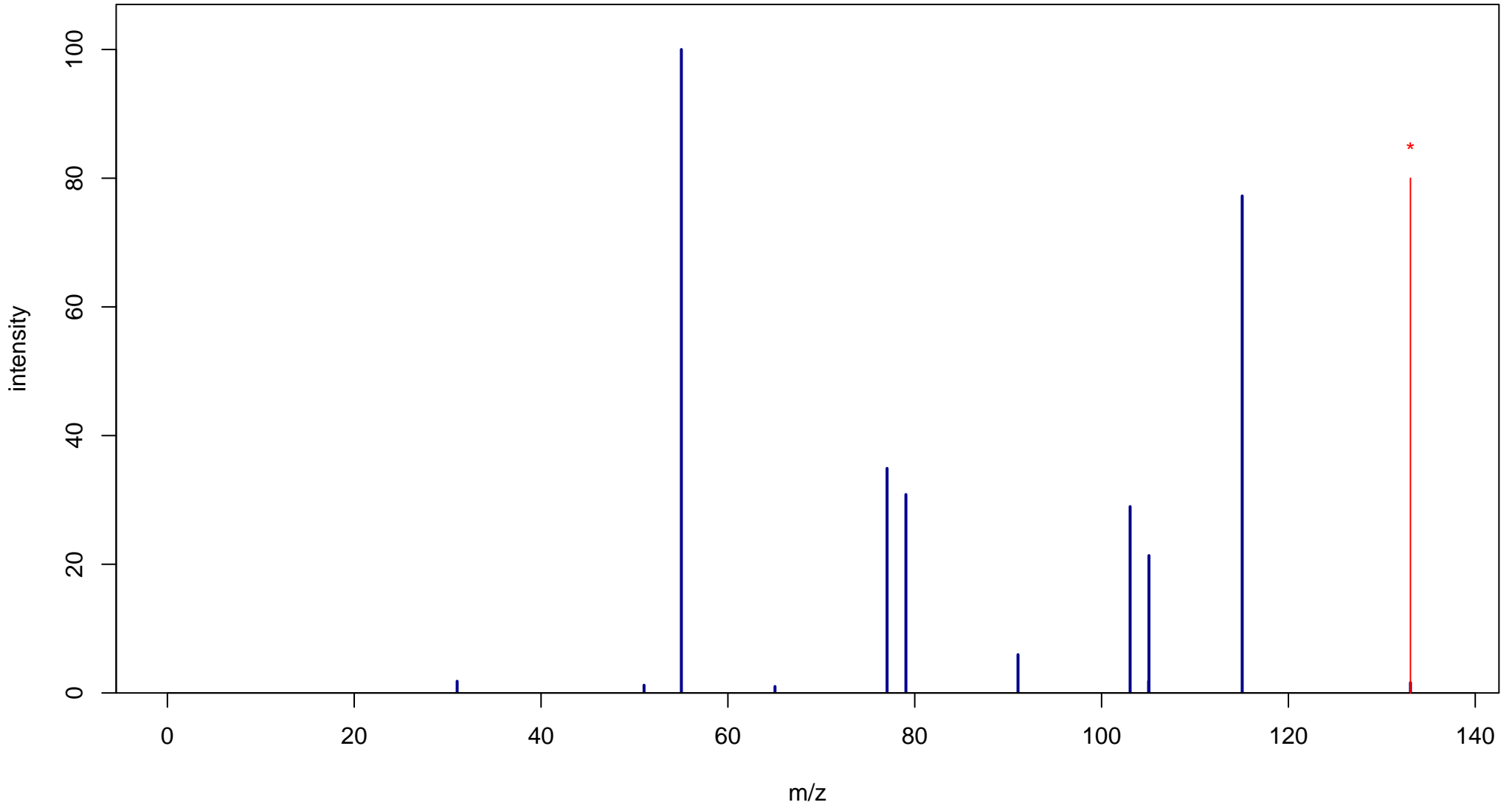
# Cinnamaldehyde

Mass: 132.0575 Formula: C<sub>9</sub>H<sub>8</sub>O

mode: + collisionE: 20V

METLIN ID: 6931 SIGMA Prod: W228613

[http://metlin.scripps.edu/metabo\\_info.php?molid=6931](http://metlin.scripps.edu/metabo_info.php?molid=6931)



# Cinnamaldehyde

Mass: 132.0575 Formula: C<sub>9</sub>H<sub>8</sub>O

mode: + collisionE: 40V

METLIN ID: 6931 SIGMA Prod: W228613

[http://metlin.scripps.edu/metabo\\_info.php?molid=6931](http://metlin.scripps.edu/metabo_info.php?molid=6931)

